

December 18, 2025
W:\active\161614196\reference_\apon_Renoud_Part_1a\Drawing\161614196-114E_03.dwg

Committee of Adjustment
Received | Reçu le
2026-02-09
City of Ottawa | Ville d'Ottawa
Comité de dérogation

SCHEDULE				
PART	LOT/BLOCK	CONCESSION/PLAN	PIN	AREA (m2)
1				785.53
2				249.54
3	PART OF LOT 1	3 (OTTAWA FRONT)		191.16
4	PART OF BLOCK 258	4M-1719		250.80
5				46.06
6				45.98
7	PART OF LOT 1 PART OF BLOCK 258 PART OF BLOCK 163	3 (OTTAWA FRONT) 4M-1719		204.18
8	PART OF BLOCK 258 PART OF BLOCK 163	4M-1719		193.48
9	PART OF BLOCK 163			358.63
10	PART OF LOT 1 ALL OF BLOCK 273	3 (OTTAWA FRONT) 4M-1719	ALL OF 04404-	332.79
11				331.37
12	PART OF LOT 1	3 (OTTAWA FRONT)		329.75
13				328.13
14				326.51
15	PART OF LOT 1 PART OF BLOCK 164	3 (OTTAWA FRONT) 4M-1719		325.55
16	PART OF BLOCK 164	4M-1719		362.96
17				27.08
18				25.92
19	PART OF LOT 1	3 (OTTAWA FRONT)		25.20
20				24.48
21				23.42

PLAN OF SURVEY OF
PART OF LOT 1
CONCESSION 3 (OTTAWA FRONT)
(GEOGRAPHIC TOWNSHIP OF GLOUCESTER)
AND
BLOCKS 163, 164, 258 & 273
REGISTERED PLAN 4M-1719
CITY OF OTTAWA

Scale 1:250
THE INTENDED PLOT SIZE OF THIS PLAN IS 610 mm IN WIDTH BY 610 mm IN HEIGHT WHEN PLOTTED AT A SCALE OF 1:250.

METRIC CONVERSION
DISTANCES AND COORDINATES SHOWN ON THIS PLAN ARE IN METRES AND CAN BE CONVERTED TO FEET BY DIVIDING BY 0.3048

GRID SCALE CONVERSION
DISTANCES ARE GROUND AND CAN BE CONVERTED TO GRID BY MULTIPLYING BY THE COMBINED SCALE FACTOR OF 0.99996819.

BEARING NOTE
BEARINGS ARE GRID, DERIVED FROM THE CAN-NET VRS NETWORK OBSERVATIONS ON NCC HORIZONTAL CONTROL MONUMENTS 19773035 AND 19680191, CENTRAL MERIDIAN, 76°30' WEST LONGITUDE MTM ZONE 9, NAD83 (ORIGINAL).

19773035 N:5006060.42 E:324888.04
19680191 N:5033564.26 E:388064.94

LEGEND

■	DENOTES	FOUND MONUMENTS
□	IB	SET MONUMENTS
□	SSIB	IRON BAR
□	CC	STANDARD IRON BAR
□	CP	SHORT STANDARD IRON BAR
□	WT	CUT CROSS
□	PIN	CONCRETE PIN
□	M/MEAS	WITNESS
□	INST	IDENTIFICATION NUMBER
S		MEASURED
OU		INSTRUMENT
SG		SET
P1		ORIGIN UNKNOWN
P2		STANTEC GEOMATICS LTD.
ORP		REGISTERED PLAN 4M-1719
		PLAN 4R-35656
		OBSERVED REFERENCE POINT

OBSERVED REFERENCE POINTS DERIVED FROM THE CAN-NET VRS NETWORK GPS OBSERVATIONS ON NCC HORIZONTAL CONTROL MONUMENTS 19773035 AND 19680191, CENTRAL MERIDIAN, 76°30' WEST LONGITUDE MTM ZONE 9, NAD83 (ORIGINAL). COORDINATES TO URBAN ACCURACY PER SEC 14(2) OF O.R.G. 216/10

POINT ID	NORTHING	EASTING
Ⓐ	5033691.97	383360.33
Ⓑ	5033719.58	383405.96

COORDINATES CANNOT, IN THEMSELVES, BE USED TO RE-ESTABLISH CORNERS OR BOUNDARIES SHOWN ON THIS PLAN.

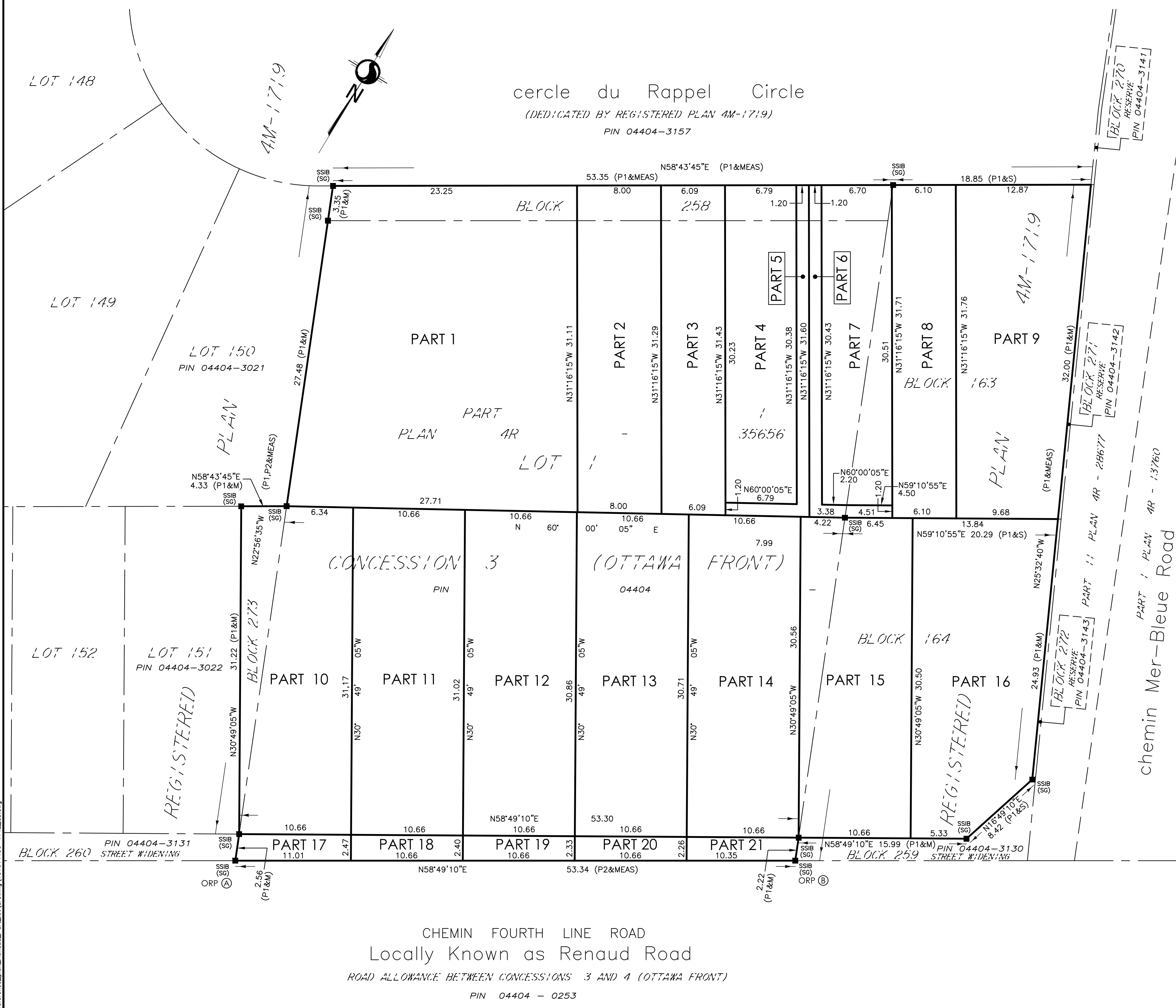
SURVEYOR'S CERTIFICATE
I CERTIFY THAT:
1. THIS SURVEY AND PLAN ARE CORRECT AND IN ACCORDANCE WITH THE SURVEYS ACT, THE SURVEYORS ACT AND THE LAND TITLES ACT AND THE REGULATIONS MADE UNDER THEM.
2. THE SURVEY WAS COMPLETED ON THE - DAY OF -, 2024.

DATE _____ FRANCIS LAU
ONTARIO LAND SURVEYOR

THIS PLAN OF SURVEY RELATES TO AOLS PLAN SUBMISSION FORM NUMBER V--.

Stantec Geomatics Ltd.
CANADA LANDS SURVEYORS
ONTARIO LAND SURVEYORS
1331 CLYDE AVENUE, SUITE 300
OTTAWA, ONTARIO, K2C 3G4
TEL: 613.722.4420
stantec.com

DRAWN: ME CHECKED: - PM: FL FIELD: - PROJECT No.: 161614196-114E



CHEMIN FOURTH LINE ROAD
Locally Known as Renaud Road
ROAD ALLOWANCE BETWEEN CONCESSIONS 3 AND 4 (OTTAWA FRONT)
PIN 04404 - 0253