

Committee of Adjustment
Received | Reçu le
2026-03-10
City of Ottawa | Ville d'Ottawa
Comité de dérogation

SCHEDULE				
PART	LOT	CONCESSION	PIN	AREA (m ²)
1			ALL OF 04343-0067	1402.1
2	PART OF 14	4 (RIDEAU FRONT)	ALL OF 04343-0068	116.1
3				1277.5

PLAN OF SURVEY OF
**PART OF LOT 14
CONCESSION 4 (RIDEAU FRONT)**
(GEOGRAPHIC TOWNSHIP OF GLOUCESTER)
CITY OF OTTAWA

Scale 1:200
5 0 5 10 METRES

THE INTENDED PLOT SIZE OF THIS PLAN IS 914 mm IN WIDTH BY 610 mm IN HEIGHT WHEN PLOTTED AT A SCALE OF 1:250 m.

Stantec Geomatics Ltd.

METRIC CONVERSION
DISTANCES AND COORDINATES SHOWN ON THIS PLAN ARE IN METRES AND CAN BE CONVERTED TO FEET BY DIVIDING BY 0.3048

GRID SCALE CONVERSION
DISTANCES ARE GROUND AND CAN BE CONVERTED TO GRID BY MULTIPLYING BY THE COMBINED SCALE FACTOR OF 0.99993.

BEARING NOTE
BEARINGS ARE GRID, DERIVED FROM THE CAN-NET VRS NETWORK OBSERVATIONS, CENTRAL MERIDIAN, 76°30' WEST LONGITUDE MTM ZONE 9, NAD83 (CSRS) (2010.0).

MONUMENTATION NOTE
SSB'S AND P'S WERE SET DUE TO LACK OF OVERBURDEN AND/OR POSSIBLE UNDERGROUND UTILITIES IN ACCORDANCE WITH SECTION 11 (4) OF REG. 525/91.

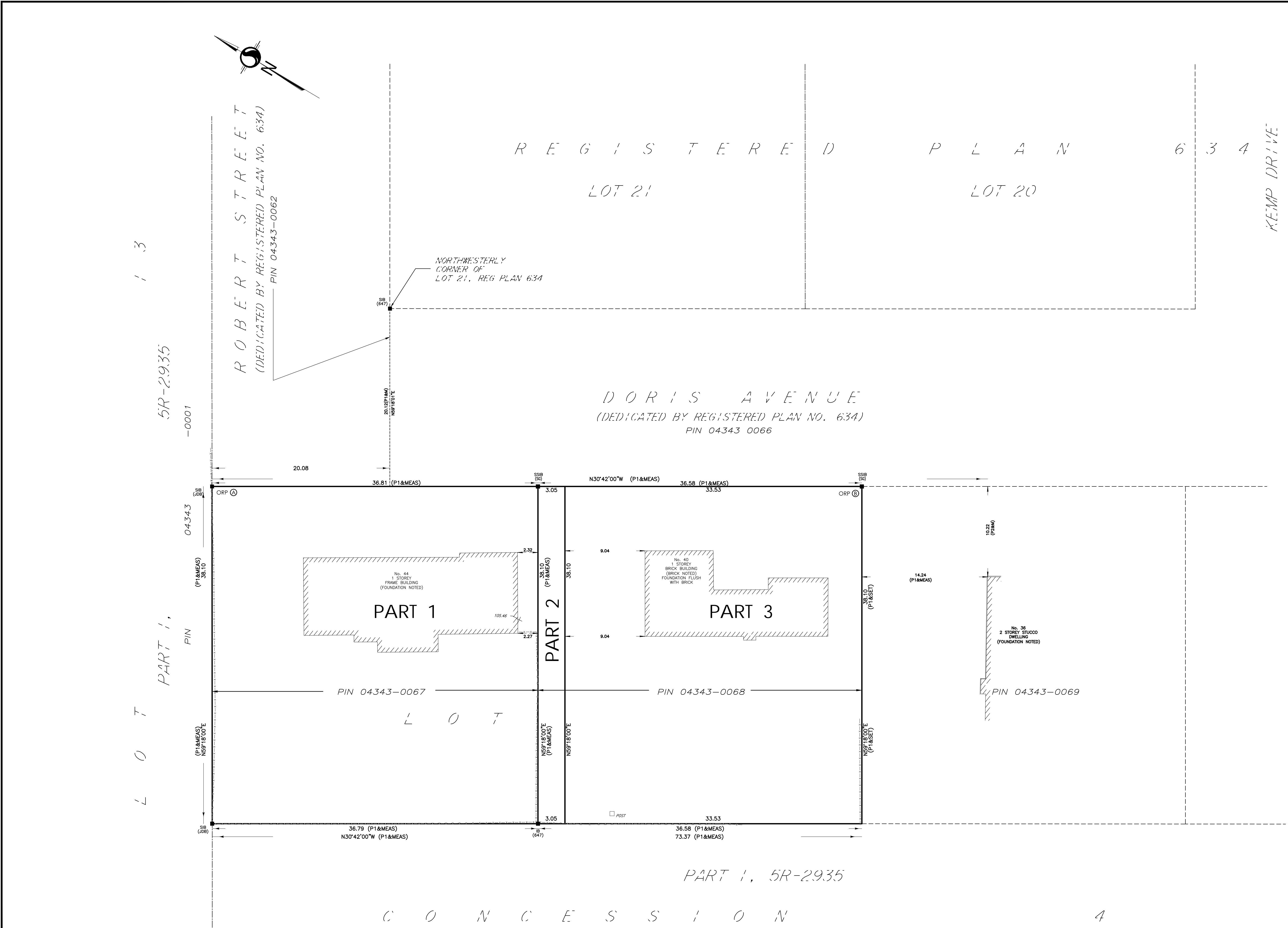
LEGEND	DENOTES	FOUND MONUMENTS
□	SET MONUMENTS	
IB	IRON BAR	
IB#	ROUND IRON BAR	
SIB	STANDARD IRON BAR	
SSIB	SHORT STANDARD IRON BAR	
CC	CUT CROSS	
CP	CONCRETE PIN	
WIT	WITNESS	
PIN	PROPERTY IDENTIFICATION NUMBER	
MEAS	MEASURED	
INST	INSTRUMENT	
PROP	PROPORTIONED	
OU	ORIGIN UNKNOWN	
SG	STANTEC GEOMATICS LTD.	
P1	PLAN OF SURVEY BY SG DATED SEP. 26, 2023	

SURVEYOR'S CERTIFICATE
I CERTIFY THAT:
1. THIS SURVEY AND PLAN ARE CORRECT AND IN ACCORDANCE WITH THE SURVEYS ACT, THE SURVEYORS ACT AND THE LAND TITLES ACT AND THE REGULATIONS MADE UNDER THEM.
2. THE SURVEY WAS COMPLETED ON THE 26th DAY OF AUGUST, 2025.

DATE _____ FRANCIS LAU
ONTARIO LAND SURVEYOR

Stantec Geomatics Ltd.
CANADA LANDS SURVEYORS
ONTARIO LAND SURVEYORS
1331 CLYDE AVENUE, SUITE 300
OTTAWA, ONTARIO, K2C 3G4
TEL: 613.722.4420
stantec.com

DRAWN: * CHECKED: * PM: * FIELD: * PROJECT No.: 161600000



OBSERVED REFERENCE POINTS DERIVED FROM THE CAN-NET VRS NETWORK GPS OBSERVATIONS ON NCC HORIZONTAL CONTROL MONUMENTS 19773035 AND 19680191, CENTRAL MERIDIAN, 76°30' WEST LONGITUDE MTM ZONE 9, NAD83 (ORIGINAL), COORDINATES TO URBAN ACCURACY PER SEC 14(2) OF O.REG. 216/10

POINT ID	NORTHING	EASTING
①	5022106.33	374677.69
②	5022043.23	374715.16

COORDINATES CANNOT, IN THEMSELVES, BE USED TO RE-ESTABLISH CORNERS OR BOUNDARIES SHOWN ON THIS PLAN.

Z:\Users\1616148\OneDrive\Documents\1616148\1616148-114_P1_254.dwg

3 November 2025, 11:58 AM