

METRIC
DISTANCES AND COORDINATES SHOWN ON THIS PLAN ARE IN METRES
AND CAN BE CONVERTED TO FEET BY DIVIDING BY 0.3048

PLAN PREPARED FOR
COMMITTEE OF ADJUSTMENT
AUGUST 14, 2025

SCHEDULE				
PART	BLOCK	PLAN	PIN	AREA (SQ.M.)
1				1896
2				115
3				8744
4				7803
5				301
6				443
7				543
8				305
9				8
10				100
11				150
12				1225
13				630
14				107
15				22
16				5080
17				935
18				2084
19				548
20				466
21				601
22				15
23				26
24				15
25				2
26				2
27				1
28				63
29				21

PARTS 2, 5 AND 8 SUBJECT TO EASEMENT INST. L7623394.
PARTS 3 TO 9 SUBJECT TO EASEMENT INST. L7912063.
PARTS 4 AND 5 SUBJECT TO EASEMENT INST. L786060.
PARTS 10 TO 29 SUBJECT TO EASEMENT INST. L7912062.

PLAN OF SURVEY OF
PART OF BLOCK 3
REGISTERED PLAN 4M-642
CITY OF OTTAWA

SCALE 1 : 500
THE INTENDED PLOT SIZE OF THIS PLAN IS 118mm IN WIDTH
BY 610mm IN HEIGHT WHEN PLOTTED AT A SCALE OF 1:500.
FAIRHALL, MOFFATT & WOODLAND LIMITED
ONTARIO LAND SURVEYORS

- NOTES**
- BEARINGS ARE GRID, DERIVED FROM OBSERVED REFERENCE POINTS (508) AND (529) BY REAL TIME NETWORK OBSERVATIONS AND ARE REFERRED TO THE CENTRAL MERIDIAN, 76°30'W LONGITUDE MTM ZONE 9, NAD83 ORIGINAL.
 - DISTANCES ARE GROUND AND CAN BE CONVERTED TO GRID BY MULTIPLYING BY THE COMBINED SCALE FACTOR 0.999919.
 - ALTERNATE AND REDUCED LENGTH MONUMENTS SET DUE TO UNDERGROUND UTILITY HAZARD.

Committee of Adjustment
Received | Reçu le
2025-12-18
City of Ottawa | Ville d'Ottawa
Comité de dérogation

- LEGEND**
- SURVEY MONUMENT SET
 - SURVEY MONUMENT FOUND
 - SSB - STANDARD IRON BAR
 - SSIB - SHORT STANDARD IRON BAR
 - IB - IRON BAR
 - CP - CONCRETE PIN
 - (P) - REGISTERED PLAN 4M-642
 - (PI) - PLAN 4R-9178
 - (PI1) - PLAN 4R-7014
 - (P3) - PLAN 4R-6130
 - (S) - SET
 - (M) - MEASURED
 - (857) - FAIRHALL, MOFFATT & WOODLAND LIMITED, O.L.S.
 - (JDB) - J. D. BARNES LTD, O.L.S., (REF. 25-10-023-00)
 - CB - CATCH BASIN
 - OH - MANHOLE
 - MHSA - SANITARY MANHOLE
 - MHST - STORM MANHOLE
 - MHW - WATER MANHOLE
 - MHB - BELL MANHOLE
 - WV - WATER VALVE
 - PH - FIRE HYDRANT
 - CH - CONCRETE CURB
 - ① - POINT NUMBER
 - PIN - PROPERTY IDENTIFIER NUMBER

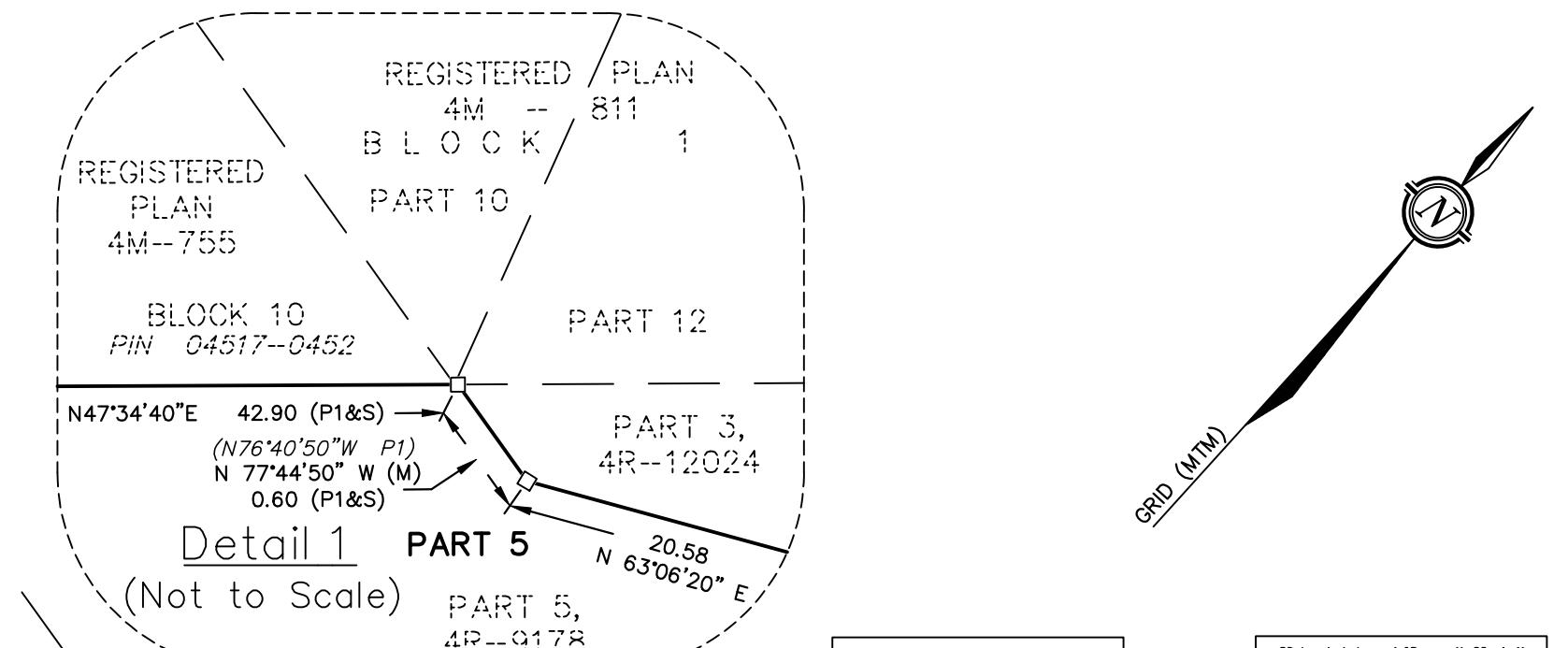
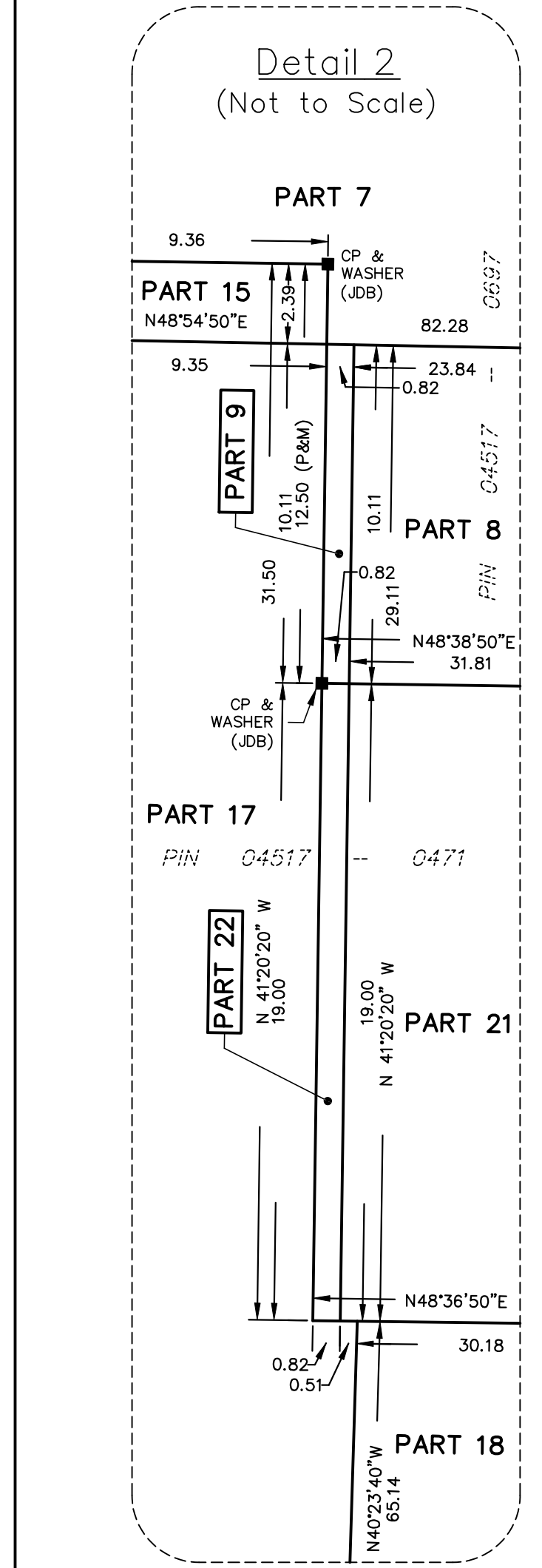
SURVEYOR'S CERTIFICATE
I CERTIFY THAT:
1. THIS SURVEY AND PLAN ARE CORRECT AND IN ACCORDANCE WITH THE SURVEYS ACT, THE SURVEYORS ACT, THE LAND TITLES ACT AND THE REGULATIONS MADE UNDER THEM.
2. THE SURVEY WAS COMPLETED ON

DATE
JOHN H. GUTRI
ONTARIO LAND SURVEYOR

THIS PLAN OF SURVEY RELATES TO AOLS PLAN SUBMISSION FORM NUMBER

Fairhall Moffatt & Woodland
LIMITED
OTTAWA
Ontario Land Surveyors
Surveying and Land Information Services
100-600 TERRY FOX DRIVE, KANATA, ONTARIO K2L 4B6
TEL: (613) 591-2280 FAX: (613) 591-1495
www.fmw.com

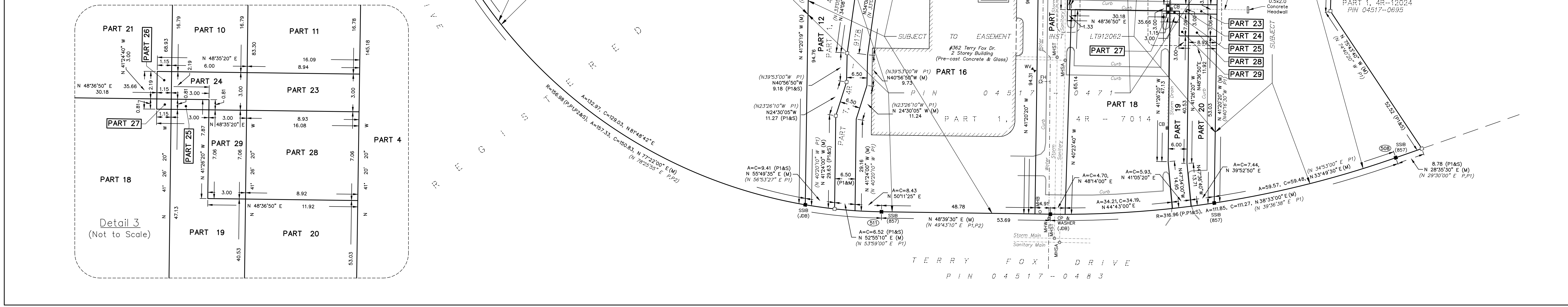
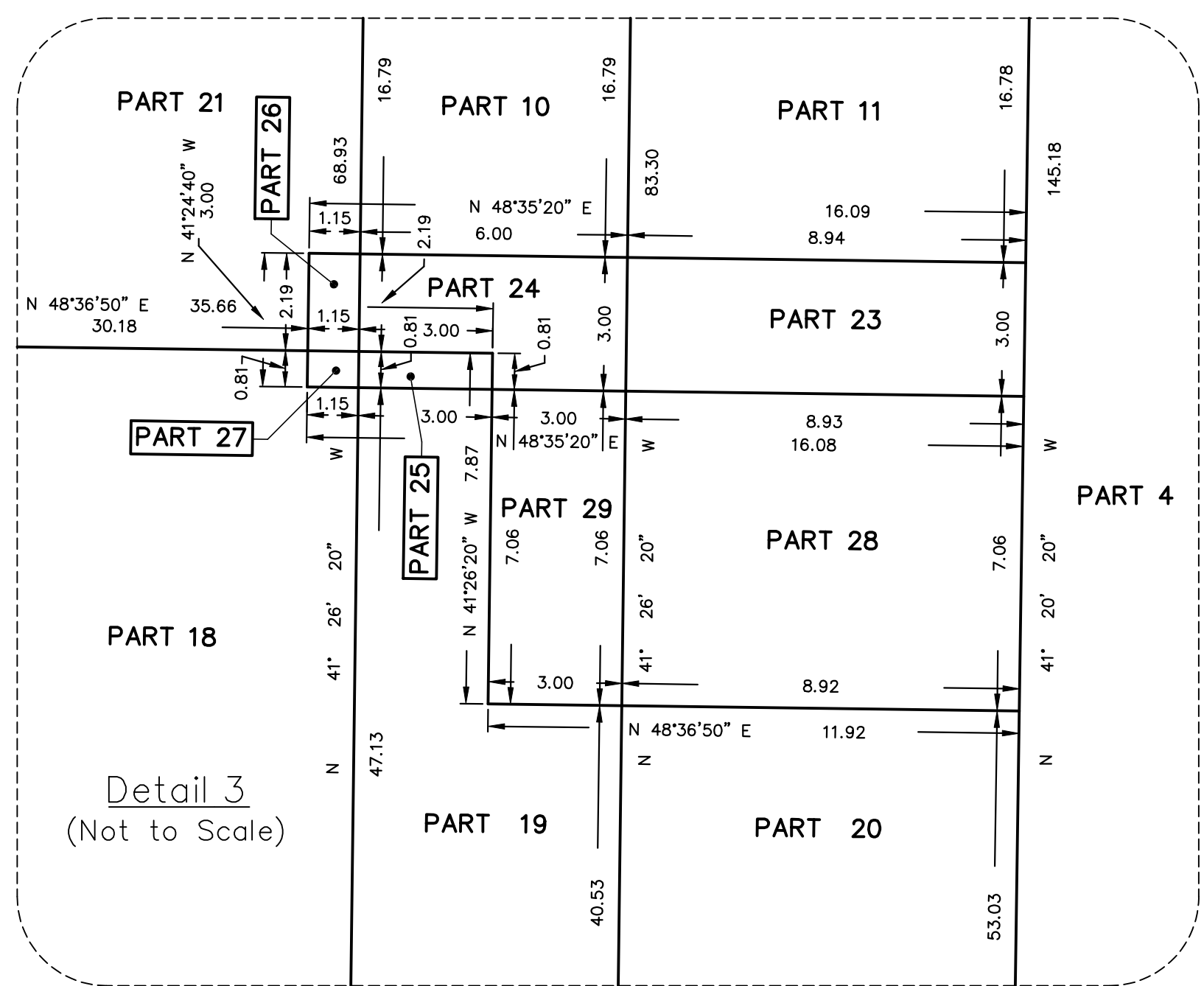
JOB No. AF14500
E 350213, N 5023559
REFERENCE No. 37 - 4M - 642
S:\OBS\AF14500\DWG drrp_0145.dwg (cnr)



COORDINATES WERE DERIVED FROM REAL TIME NETWORK OBSERVATIONS (SMARTNET) MTM ZONE 9, NAD83 ORIGINAL.
COORDINATES HAVE BEEN DETERMINED TO AN URBAN ACCURACY IN ACCORDANCE WITH SECTION 14(2) OF O.REG 216/10.

POINT ID	NORTHING	EASTING
508	5023618.35	350389.51
511	5023495.87	350279.87
529	5023462.89	350132.69

COORDINATES CANNOT IN THEMSELVES BE USED TO RE-ESTABLISH CORNERS OR BOUNDARIES SHOWN ON THIS PLAN.



METRIC
DISTANCES AND COORDINATES SHOWN ON THIS PLAN ARE IN METRES
AND CAN BE CONVERTED TO FEET BY DIVIDING BY 0.3048

PLAN PREPARED FOR
COMMITTEE OF ADJUSTMENT
AUGUST 14, 2025

SCHEDULE				
PART	BLOCK	PLAN	PIN	AREA (SQ.M.)
1				1896
2				1135
3				8744
4				7803
5				301
6				443
7				543
8				305
9				8
10				100
11				150
12				1225
13				630
14				107
15				22
16				5080
17				935
18				2084
19				548
20				466
21				601
22				15
23				26
24				15
25				2
26				2
27				1
28				63
29				21

PARTS 2, 5 AND 8 SUBJECT TO EASEMENT INST. L7623394.
PARTS 3 TO 9 SUBJECT TO EASEMENT INST. L7912063.
PARTS 4 AND 5 SUBJECT TO EASEMENT INST. L7866060.
PARTS 10 TO 29 SUBJECT TO EASEMENT INST. L7912062.

PLAN OF SURVEY OF
PART OF BLOCK 3
REGISTERED PLAN 4M-642
CITY OF OTTAWA

SCALE 1 : 500
THE INTENDED PLOT SIZE OF THIS PLAN IS 118mm IN WIDTH
BY 610mm IN HEIGHT WHEN PLOTTED AT A SCALE OF 1:500.
FAIRHALL, MOFFATT & WOODLAND LIMITED
ONTARIO LAND SURVEYORS

- NOTES**
- BEARINGS ARE GRID, DERIVED FROM OBSERVED REFERENCE POINTS (C08) AND (C29) BY REAL TIME NETWORK OBSERVATIONS AND ARE REFERRED TO THE CENTRAL MERIDIAN, 76°30'W LONGITUDE MTM ZONE 9, NAD83 ORIGINAL.
 - DISTANCES ARE GROUND AND CAN BE CONVERTED TO GRID BY MULTIPLYING BY THE COMBINED SCALE FACTOR 0.999919.
 - ALTERNATE AND REDUCED LENGTH MONUMENTS SET DUE TO UNDERGROUND UTILITY HAZARD.

- LEGEND**
- 362 Terry Fox Drive
 - 360 Terry Fox Drive
 - Severed Lot
 - Lot Addition from 362 to 360
 - Access Easement over 362 in favour of 360
 - Servicing Easement over 362 in favour of 360
 - Access Easement over 360 in favour of 362
 - Servicing Easement over 360 in favour of 362

SURVEYOR'S CERTIFICATE

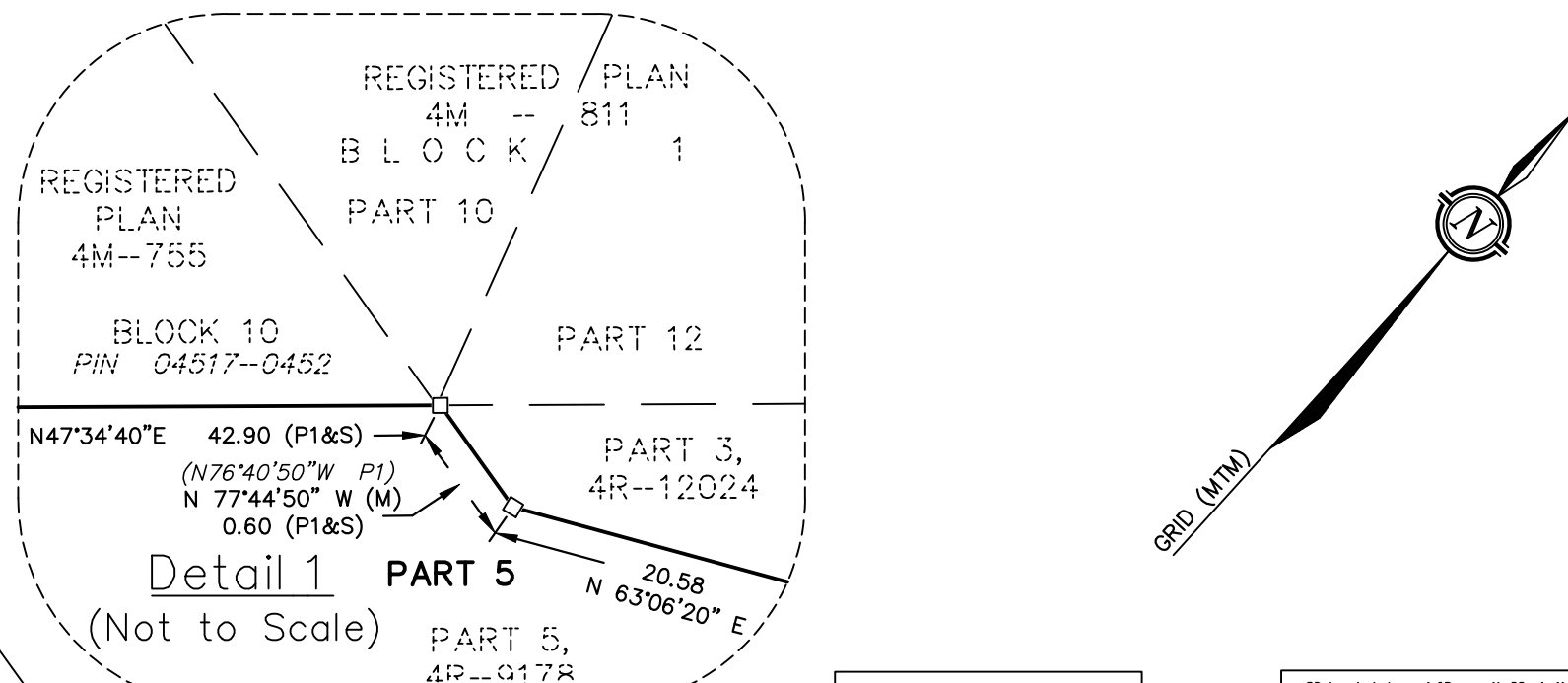
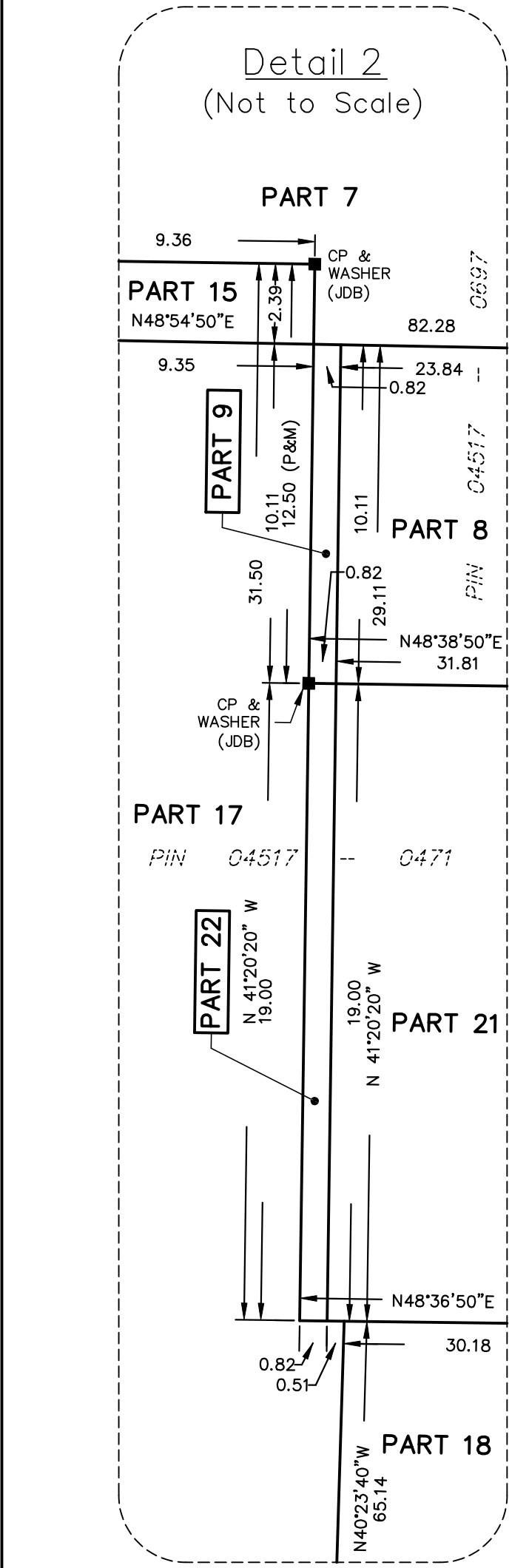
I CERTIFY THAT:
1. THIS SURVEY AND PLAN ARE CORRECT AND IN ACCORDANCE WITH THE SURVEYS ACT, THE SURVEYORS ACT, THE LAND TITLES ACT AND THE REGULATIONS MADE UNDER THEM.
2. THE SURVEY WAS COMPLETED ON

DATE
JOHN H. GUTRI
ONTARIO LAND SURVEYOR

THIS PLAN OF SURVEY RELATES TO AOLS PLAN SUBMISSION FORM NUMBER

Fairhall Moffatt & Woodland
LIMITED
OTTAWA
Ontario Land Surveyors
Surveying and Land Information Services
100-600 TERRY FOX DRIVE, KANATA, ONTARIO K2L 4B6
TEL: (613) 591-2260 FAX: (613) 591-1495
www.fmw.com

JOB No. AF14500
E 350213, N 5023559
REFERENCE No. 37 - 4M - 642
S:\085AF14500\DWG
drr_01145.dwg (cnr)



COORDINATES WERE DERIVED FROM REAL TIME NETWORK OBSERVATIONS (SMARTNET) MTM ZONE 9, NAD83 ORIGINAL.
COORDINATES HAVE BEEN DETERMINED TO AN URBAN ACCURACY IN ACCORDANCE WITH SECTION 14(2) OF O.REG 216/10.

POINT ID	NORTHING	EASTING
508	5023618.35	350389.51
511	5023495.87	350279.87
529	5023462.89	350132.69

COORDINATES CANNOT IN THEMSELVES BE USED TO RE-ESTABLISH CORNERS OR BOUNDARIES SHOWN ON THIS PLAN.

