

METRIC
DISTANCES AND COORDINATES SHOWN ON THIS PLAN ARE IN METRES
AND CAN BE CONVERTED TO FEET BY DIVIDING BY 0.3048

PLAN PREPARED FOR
COMMITTEE OF ADJUSTMENT
AUGUST 14, 2025

Committee of Adjustment
Received | Recule
2026-01-08
City of Ottawa | Ville d'Ottawa
Comité de dérogation

SCHEDULE				
PART	BLOCK	PLAN	PIN	AREA (SQ.M.)
1				1896
2				1135
3				8744
4				7803
5				301
6				443
7				543
8				305
9				8
10				100
11				150
12				1225
13				630
14				107
15				22
16				5080
17				935
18				2084
19				548
20				466
21				601
22				15
23				26
24				15
25				2
26				2
27				1
28				63
29				21

PLAN OF SURVEY OF
PART OF BLOCK 3
REGISTERED PLAN 4M-642
CITY OF OTTAWA
SCALE 1 : 500

THE INTENDED PLOT SIZE OF THIS PLAN IS 118mm IN WIDTH
BY 610mm IN HEIGHT WHEN PLOTTED AT A SCALE OF 1:500.
FAIRHALL, MOFFATT & WOODLAND LIMITED
ONTARIO LAND SURVEYORS

NOTES
1. BEARINGS ARE GRID, DERIVED FROM OBSERVED REFERENCE POINTS (508) AND (529) BY REAL TIME NETWORK OBSERVATIONS AND ARE REFERRED TO THE CENTRAL MERIDIAN, 76°30'W LONGITUDE MTM ZONE 9, NAD83 ORIGINAL.
2. DISTANCES ARE GROUND AND CAN BE CONVERTED TO GRID BY MULTIPLYING BY THE COMBINED SCALE FACTOR 0.999919.
3. ALTERNATE AND REDUCED LENGTH MONUMENTS SET DUE TO UNDERGROUND UTILITY HAZARD.

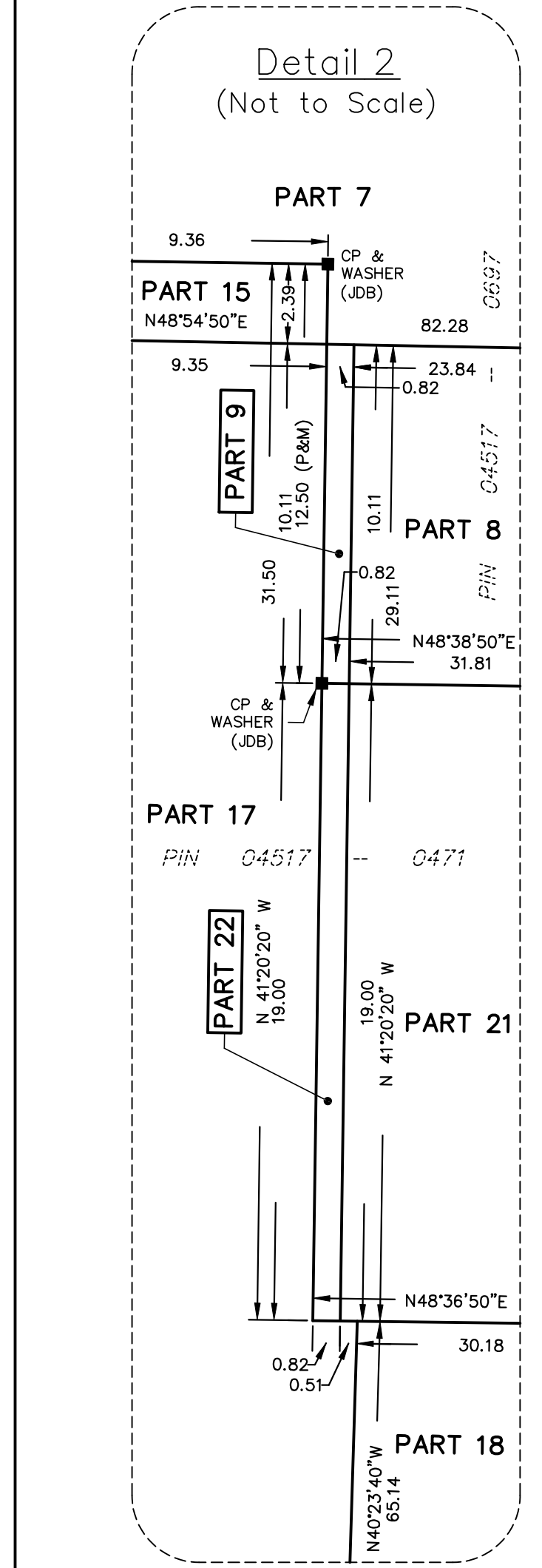
LEGEND
 362 Terry Fox Drive
 360 Terry Fox Drive
 Retained Lot
 Lot Addition from 362 to 360
 Access Easement over 362 in favour of 360
 Servicing Easement over 362 in favour of 360
 Access Easement over 360 in favour of 362
 Servicing Easement over 360 in favour of 362

LEGEND
 ■ SURVEY MONUMENT SET
 ■ SURVEY MONUMENT FOUND
 SIB - STANDARD IRON BAR
 SSB - SHORT STANDARD IRON BAR
 IB - IRON BAR
 CP - CONCRETE PIN
 (P) - REGISTERED PLAN 4M-642
 (P1) - PLAN 4R-9178
 (P2) - PLAN 4R-7014
 (P3) - PLAN 4R-6130
 (S) - SET
 (M) - MEASURED
 (857) - FAIRHALL, MOFFATT & WOODLAND LIMITED, O.L.S.
 (JDB) - J. D. BARNES LTD, O.L.S., (REF. 25-10-023-00)
 CB - CATCH BASIN
 MH - MANHOLE
 MHSA - SANITARY MANHOLE
 MHST - STORM MANHOLE
 MHW - WATER MANHOLE
 MHB - BELL MANHOLE
 MW - WATER VALVE
 FH - FIRE HYDRANT
 CH - CONCRETE CURB
 (23) - POINT NUMBER
 PIN - PROPERTY IDENTIFIER NUMBER

SURVEYOR'S CERTIFICATE
 I CERTIFY THAT:
 1. THIS SURVEY AND PLAN ARE CORRECT AND IN ACCORDANCE WITH THE SURVEYS ACT, THE SURVEYORS ACT, THE LAND TITLES ACT AND THE REGULATIONS MADE UNDER THEM.
 2. THE SURVEY WAS COMPLETED ON

DATE
 JOHN H. GUTRI
 ONTARIO LAND SURVEYOR

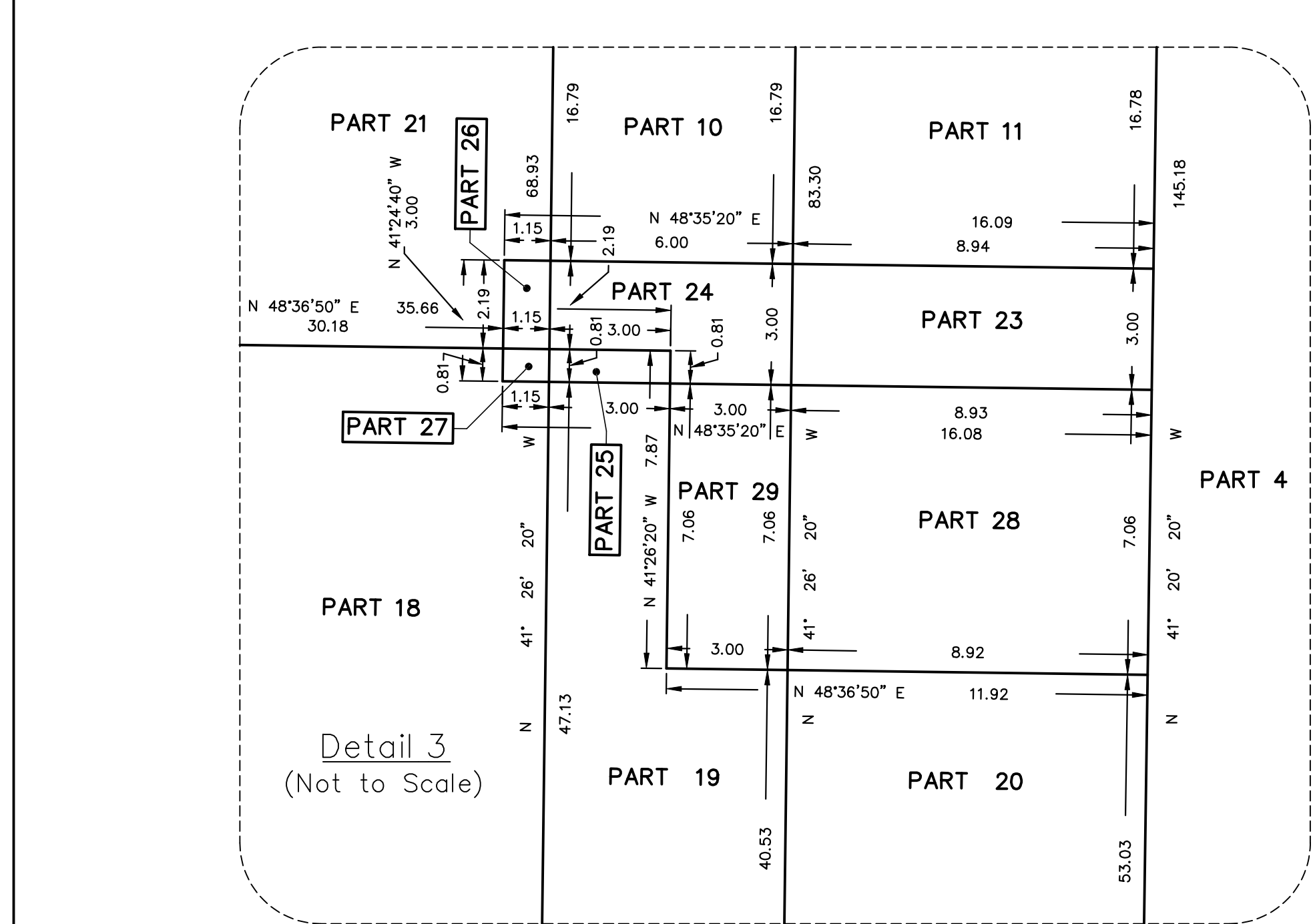
THIS PLAN OF SURVEY RELATES TO AOLS PLAN SUBMISSION FORM NUMBER
 Fairhall
 Moffatt &
 Woodland
 LIMITED
 OTTAWA
 Surveying and Land Information Services
 100-600 TERRY FOX DRIVE, KANATA, ONTARIO K2L 4B6
 TEL: (613) 591-2380 FAX: (613) 591-1495
 www.fmw.com



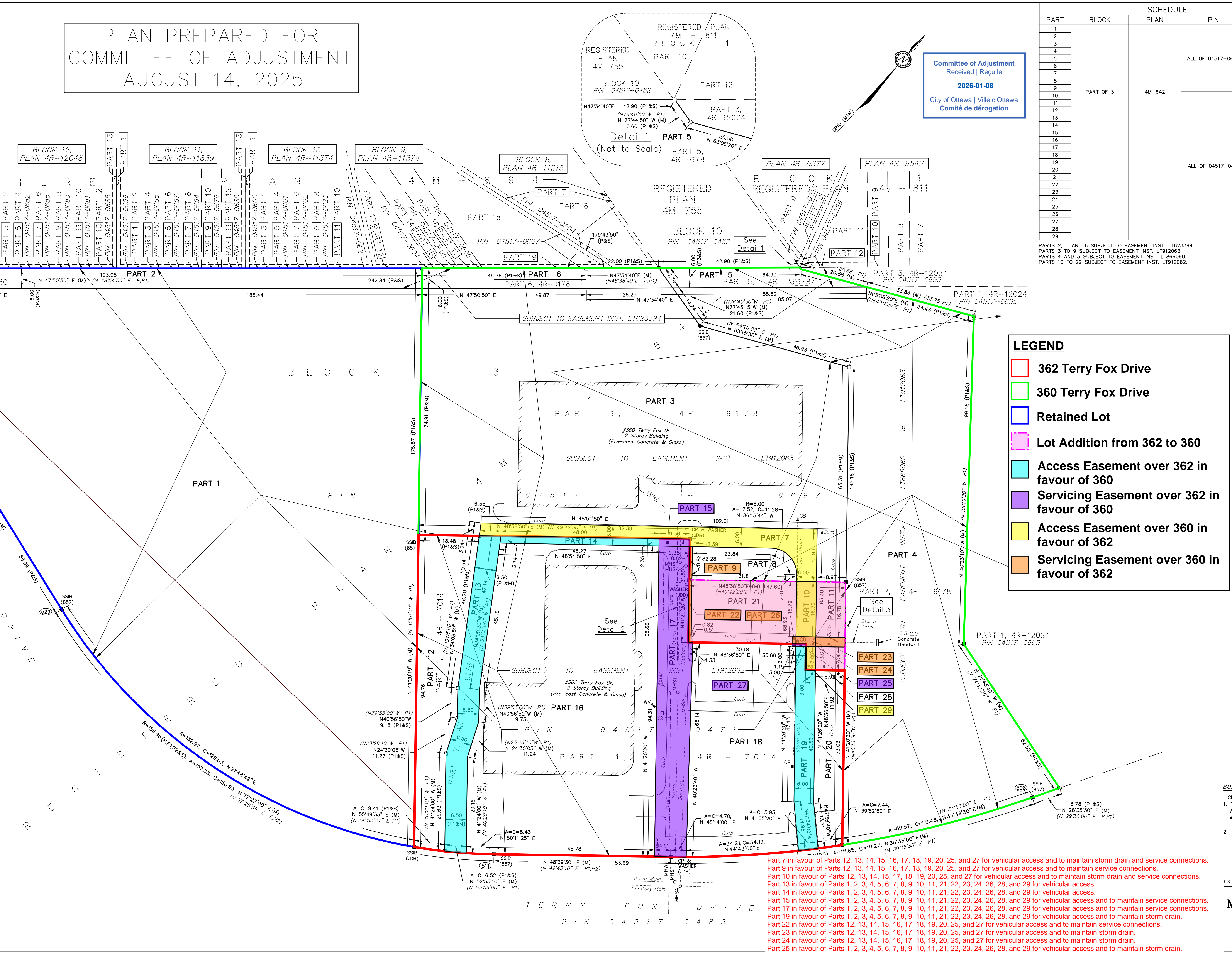
COORDINATES WERE DERIVED FROM REAL TIME NETWORK OBSERVATIONS (SMARTNET) MTM ZONE 9, NAD83 ORIGINAL.
 COORDINATES HAVE BEEN DETERMINED TO AN URBAN ACCURACY IN ACCORDANCE WITH SECTION 14(2) OF O.R.G. 216/10.

POINT ID	NORTHING	EASTING
508	5023618.35	350389.51
511	5023495.87	350279.87
529	5023462.89	350132.69

COORDINATES CANNOT IN THEMSELVES BE USED TO RE-ESTABLISH CORNERS OR BOUNDARIES SHOWN ON THIS PLAN.



Detail 3
(Not to Scale)



Part 7 in favour of Parts 12, 13, 14, 15, 16, 17, 18, 19, 20, 25, and 27 for vehicular access and to maintain storm drain and service connections.
 Part 9 in favour of Parts 12, 13, 14, 15, 16, 17, 18, 19, 20, 25, and 27 for vehicular access and to maintain service connections.
 Part 10 in favour of Parts 12, 13, 14, 15, 17, 18, 19, 20, 25, and 27 for vehicular access and to maintain storm drain and service connections.
 Part 13 in favour of Parts 1, 2, 3, 4, 5, 6, 7, 8, 9, 10, 11, 21, 22, 23, 24, 26, 28, and 29 for vehicular access.
 Part 14 in favour of Parts 1, 2, 3, 4, 5, 6, 7, 8, 9, 10, 11, 21, 22, 23, 24, 26, 28, and 29 for vehicular access.
 Part 15 in favour of Parts 1, 2, 3, 4, 5, 6, 7, 8, 9, 10, 11, 21, 22, 23, 24, 26, 28, and 29 for vehicular access and to maintain service connections.
 Part 17 in favour of Parts 1, 2, 3, 4, 5, 6, 7, 8, 9, 10, 11, 21, 22, 23, 24, 26, 28, and 29 for vehicular access and to maintain service connections.
 Part 19 in favour of Parts 1, 2, 3, 4, 5, 6, 7, 8, 9, 10, 11, 21, 22, 23, 24, 26, 28, and 29 for vehicular access and to maintain storm drain.
 Part 22 in favour of Parts 12, 13, 14, 15, 16, 17, 18, 19, 20, 25, and 27 for vehicular access and to maintain service connections.
 Part 23 in favour of Parts 12, 13, 14, 15, 16, 17, 18, 19, 20, 25, and 27 for vehicular access and to maintain storm drain.
 Part 24 in favour of Parts 12, 13, 14, 15, 16, 17, 18, 19, 20, 25, and 27 for vehicular access and to maintain storm drain.
 Part 25 in favour of Parts 1, 2, 3, 4, 5, 6, 7, 8, 9, 10, 11, 21, 22, 23, 24, 26, 28, and 29 for vehicular access and to maintain storm drain.
 Part 26 in favour of Parts 12, 13, 14, 15, 16, 17, 18, 19, 20, 25, and 27 for vehicular access and to maintain storm drain.
 Part 27 in favour of Parts 1, 2, 3, 4, 5, 6, 7, 8, 9, 10, 11, 21, 22, 23, 24, 26, 28, and 29 for vehicular access and to maintain storm drain.
 Part 29 in favour of Parts 12, 13, 14, 15, 16, 17, 18, 19, 20, 25, and 27 for vehicular access and to maintain storm drain.

METRIC
DISTANCES AND COORDINATES SHOWN ON THIS PLAN ARE IN METRES
AND CAN BE CONVERTED TO FEET BY DIVIDING BY 0.3048

PLAN PREPARED FOR
COMMITTEE OF ADJUSTMENT
AUGUST 14, 2025

RETAINED

SEVERED

SCHEDULE				
PART	BLOCK	PLAN	PIN	AREA (SQ.M.)
1				1896
2				115
3				8744
4				7803
5				301
6				443
7				543
8				305
9				8
10				100
11				150
12				1225
13				630
14				107
15				22
16				5080
17				935
18				2084
19				548
20				466
21				601
22				15
23				26
24				15
25				2
26				2
27				1
28				63
29				21

PLAN OF SURVEY OF
PART OF BLOCK 3
REGISTERED PLAN 4M-642
CITY OF OTTAWA
SCALE 1 : 500

THE INTENDED PLOT SIZE OF THIS PLAN IS 118mm IN WIDTH
BY 610mm IN HEIGHT WHEN PLOTTED AT A SCALE OF 1:500.

FAIRHALL, MOFFATT & WOODLAND LIMITED
ONTARIO LAND SURVEYORS

Committee of Adjustment
Received | Reçu le
2026-01-08
City of Ottawa | Ville d'Ottawa
Comité de dérogation

- NOTES**
- BEARINGS ARE GRID, DERIVED FROM OBSERVED REFERENCE POINTS (508) AND (529) BY REAL TIME NETWORK OBSERVATIONS AND ARE REFERRED TO THE CENTRAL MERIDIAN, 76°30'W LONGITUDE MTM ZONE 9, NAD83 ORIGINAL.
 - DISTANCES ARE GROUND AND CAN BE CONVERTED TO GRID BY MULTIPLYING BY THE COMBINED SCALE FACTOR 0.999919.
 - ALTERNATE AND REDUCED LENGTH MONUMENTS SET DUE TO UNDERGROUND UTILITY HAZARD.

- LEGEND**
- SURVEY MONUMENT SET
 - — SURVEY MONUMENT FOUND
 - SSB — STANDARD IRON BAR
 - SSIB — SHORT STANDARD IRON BAR
 - IB — IRON BAR
 - CP — CONCRETE PIN
 - (P) — REGISTERED PLAN 4M-642
 - (P1) — PLAN 4R-9178
 - (P2) — PLAN 4R-7014
 - (P3) — PLAN 4R-6130
 - (S) — SET
 - (M) — MEASURED
 - (857) — FAIRHALL, MOFFATT & WOODLAND LIMITED, O.L.S.
 - (JDB) — J. D. BARNES LTD, O.L.S., (REF. 25-10-023-00)
 - CB — CATCH BASIN
 - MH — MANHOLE
 - MHSA — SANITARY MANHOLE
 - MHST — STORM MANHOLE
 - MHW — WATER MANHOLE
 - MHB — BELL MANHOLE
 - WV — WATER VALVE
 - FH — FIRE HYDRANT
 - CONCRETE CURB
 - (23) — POINT NUMBER
 - PIN — PROPERTY IDENTIFIER NUMBER

SURVEYOR'S CERTIFICATE

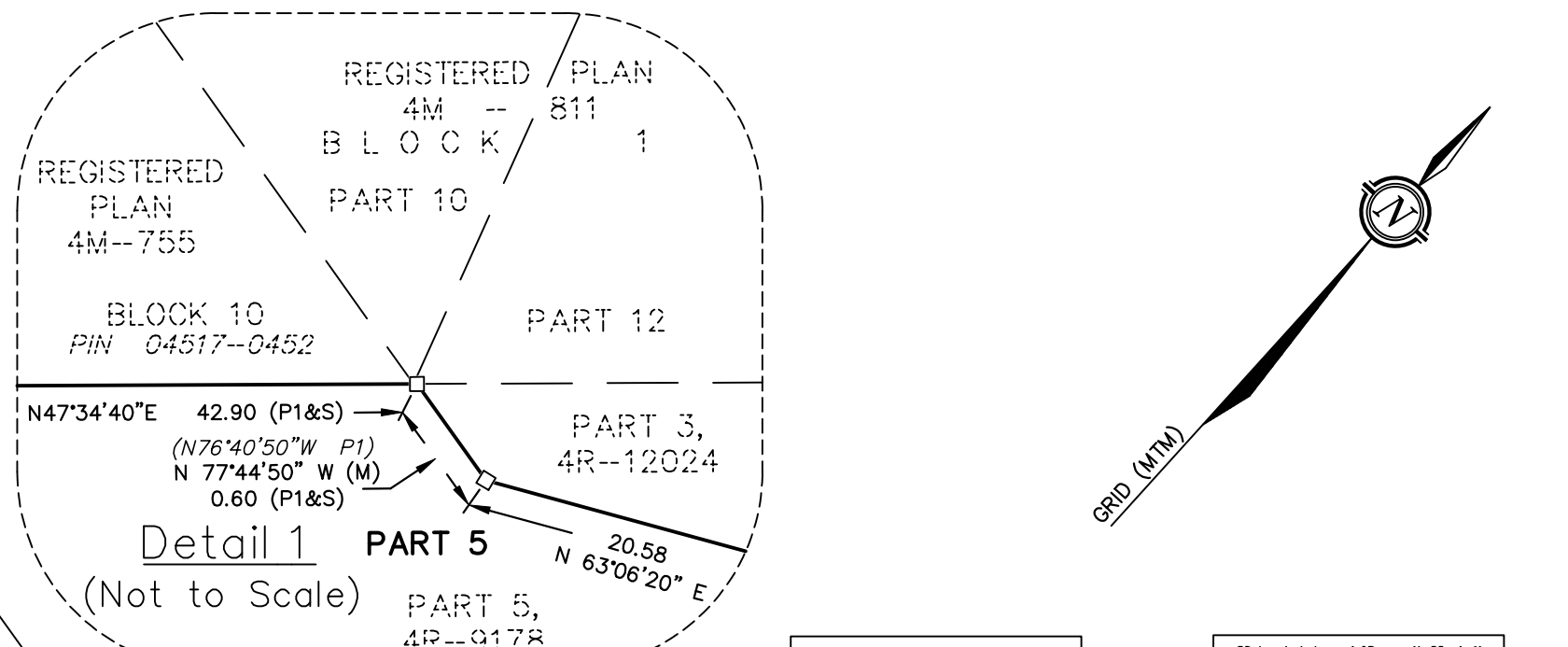
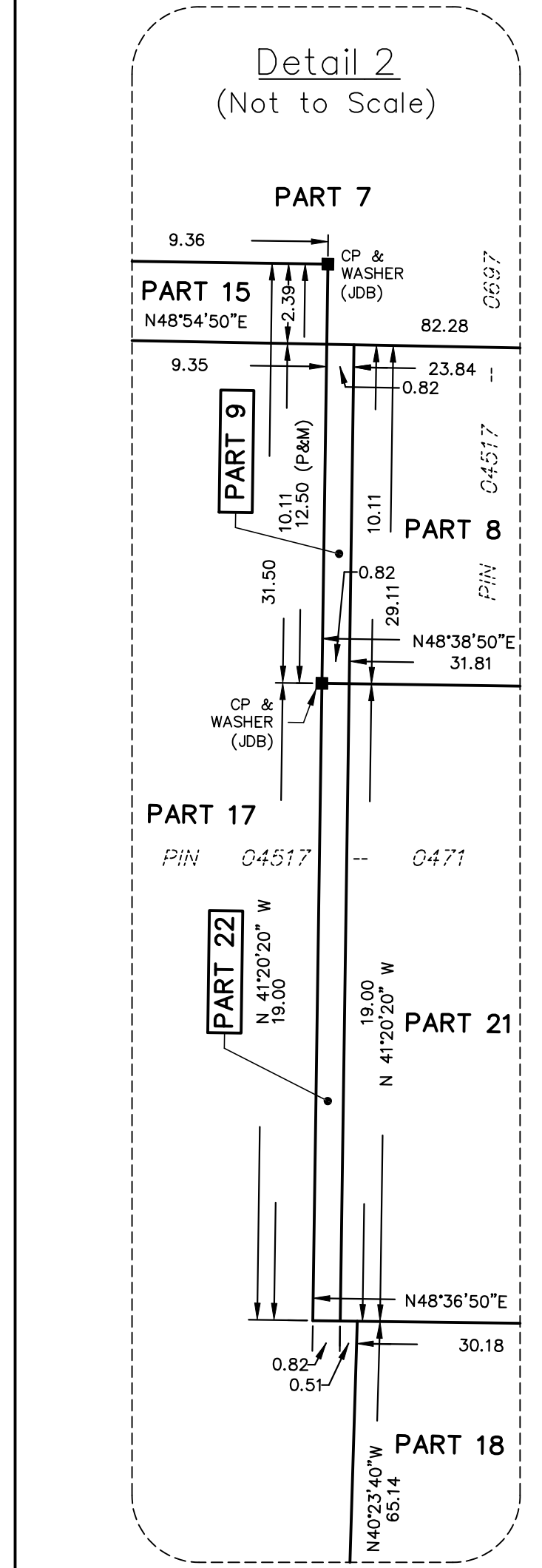
I CERTIFY THAT:
1. THIS SURVEY AND PLAN ARE CORRECT AND IN ACCORDANCE WITH THE SURVEYS ACT, THE SURVEYORS ACT, THE LAND TITLES ACT AND THE REGULATIONS MADE UNDER THEM.
2. THE SURVEY WAS COMPLETED ON

DATE
JOHN H. GUTRI
ONTARIO LAND SURVEYOR

THIS PLAN OF SURVEY RELATES TO AOLS PLAN SUBMISSION FORM NUMBER

Fairhall Moffatt & Woodland
LIMITED
OTTAWA
Ontario Land Surveyors
Surveying and Land Information Services
100-600 TERRY FOX DRIVE, KANATA, ONTARIO K2L 4B6
TEL: (613) 591-2280 FAX: (613) 591-1495
www.fmw.com

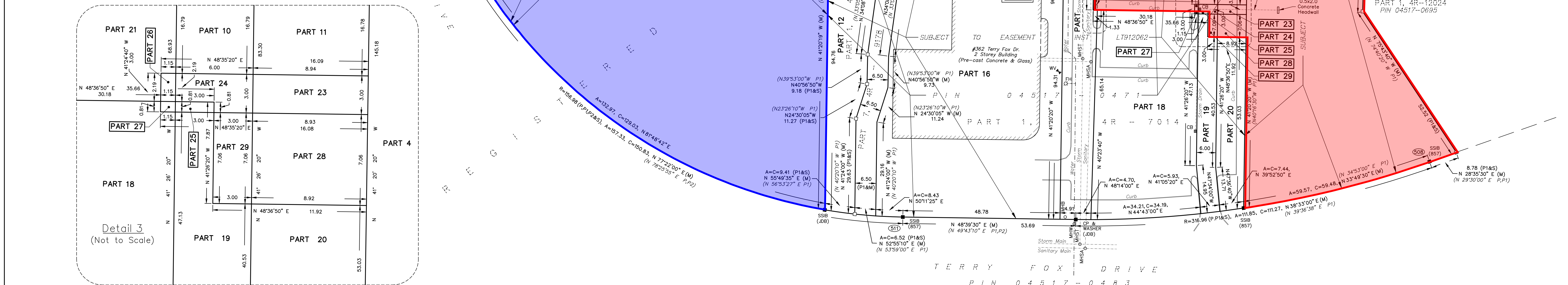
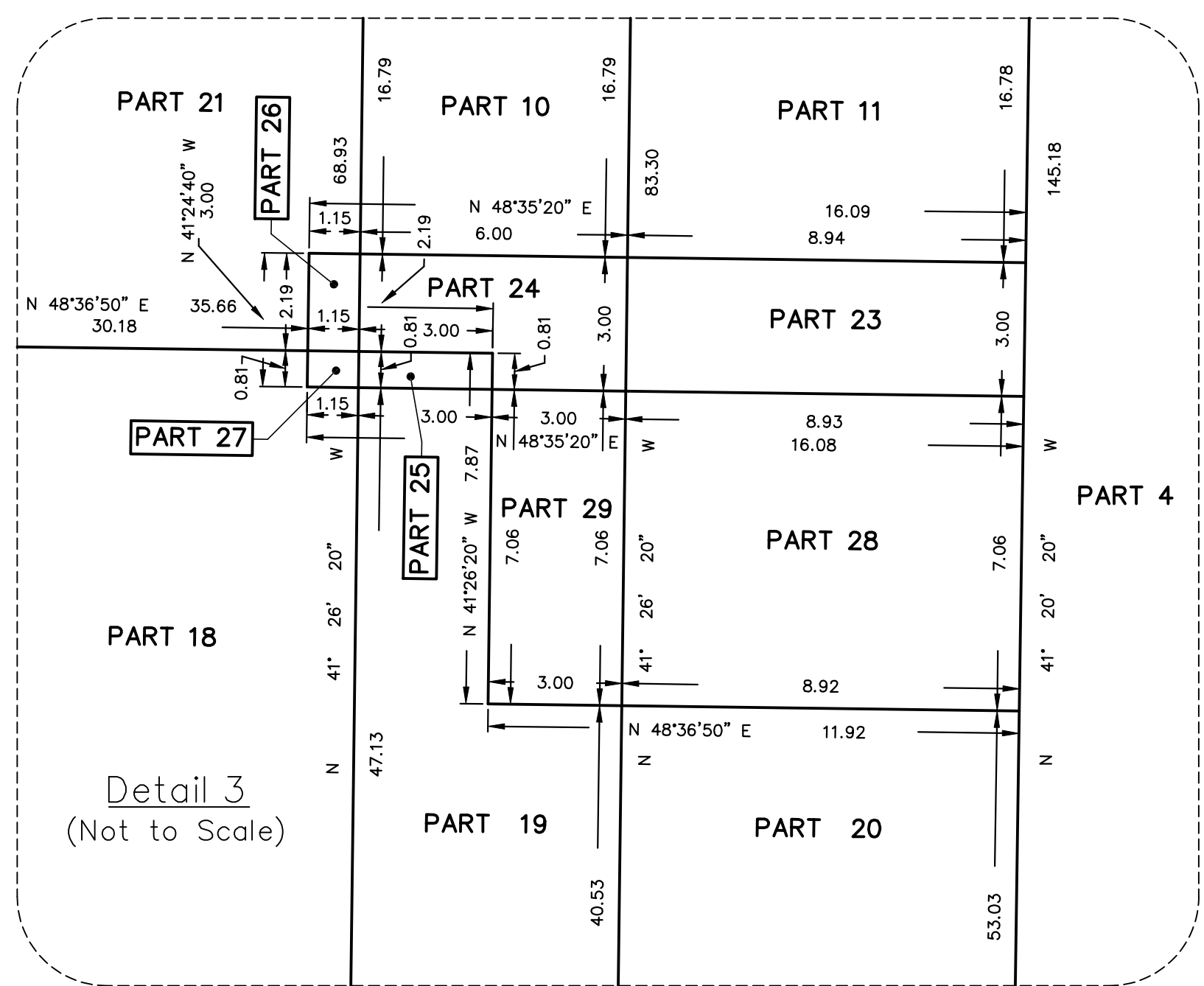
JOB No. AF14500
E 350213, N 5023559
REFERENCE No. 37 - 4M - 642
S:\OBS\AF14500\DWG
dwp_0145.dwg (cnr)



COORDINATES WERE DERIVED FROM REAL TIME NETWORK OBSERVATIONS (SMARTNET) MTM ZONE 9, NAD83 ORIGINAL.
COORDINATES HAVE BEEN DETERMINED TO AN URBAN ACCURACY IN ACCORDANCE WITH SECTION 14(2) OF O.REG 216/10.

POINT ID	NORTHING	EASTING
508	5023618.35	350389.51
511	5023495.87	350279.87
529	5023462.89	350132.69

COORDINATES CANNOT IN THEMSELVES BE USED TO RE-ESTABLISH CORNERS OR BOUNDARIES SHOWN ON THIS PLAN.



TERRY FOX DRIVE
PIN 04517-0483