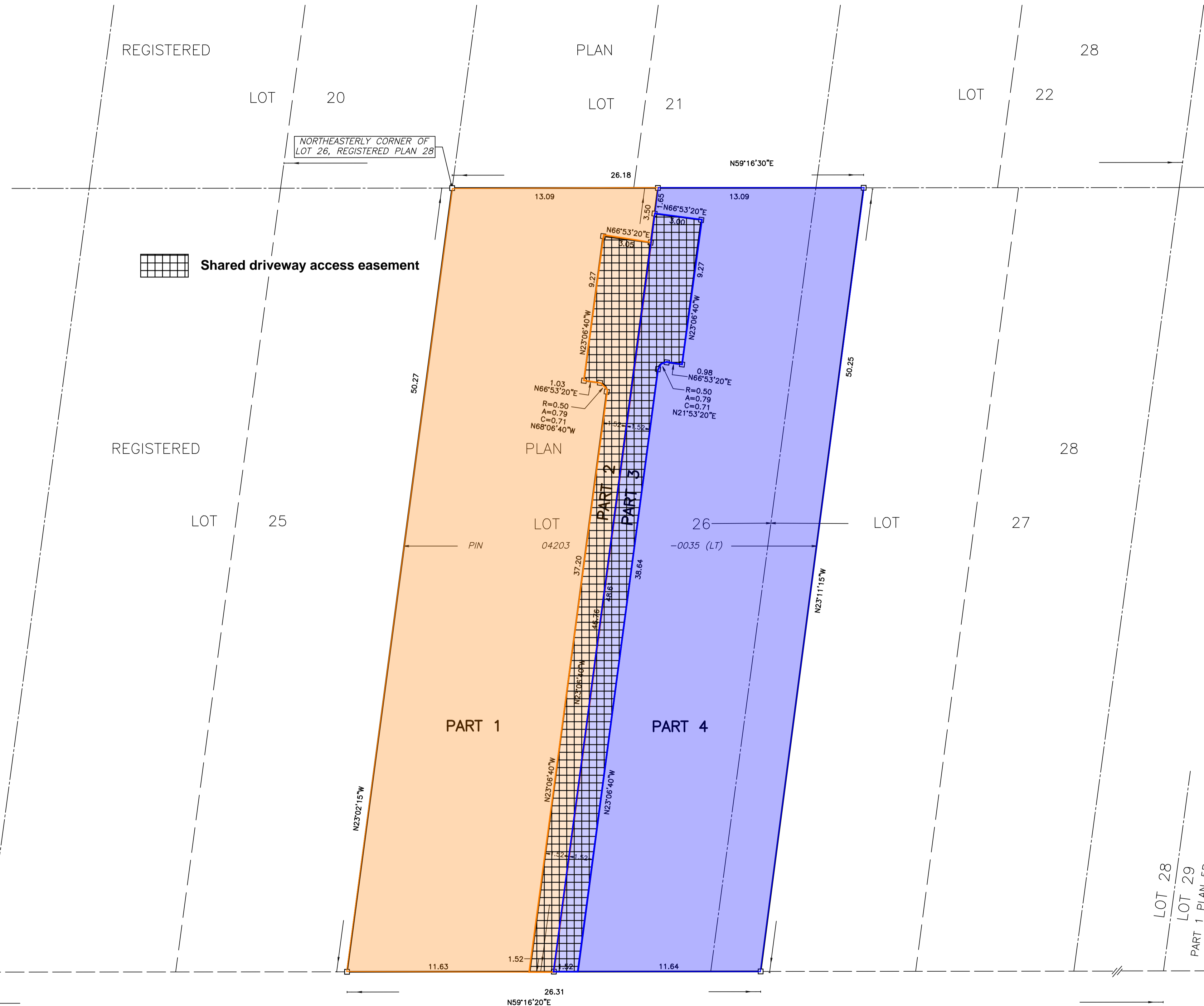
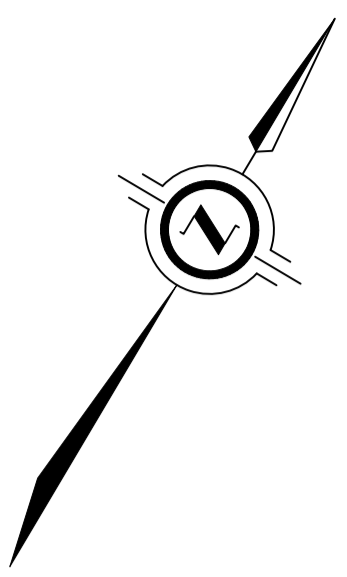


DRAFT FOR APPLICATION

SCHEDULE				
PART	LOT	PLAN	INST/PIN	AREA (sq. m.)
1	PART OF LOT 26	REGISTERED PLAN 28	ALL OF PIN 04203	568.4
2	PART OF LOT 26	REGISTERED PLAN 28	-0035 (LT)	85.4
3	PART OF LOTS 26 AND 27	REGISTERED PLAN 28	-0035 (LT)	87.4
4	PART OF LOTS 26 AND 27	REGISTERED PLAN 28	-0035 (LT)	566.3



DRAFT
 PLAN OF SURVEY OF
**LOT 26
 AND PART OF LOT 27**
 REGISTERED PLAN 28
 CITY OF OTTAWA

SCALE 1 : 150
 2.5 0 2.5 5 10 metres

THE INTENDED PLOT SIZE OF THIS PLAN IS 762mm IN WIDTH BY 609mm IN HEIGHT WHEN PLOTTED AT A SCALE OF 1:150
 J.D. BARNES LIMITED

METRIC DISTANCES AND/OR COORDINATES SHOWN ON THIS PLAN ARE IN METRES AND CAN BE CONVERTED TO FEET BY DIVIDING BY 0.3048.

INTEGRATION DATA			
OBSERVED REFERENCE POINTS (ORPs): XTM ZONE XX, NAD83 (CSRS) (2010.0). COORDINATES TO URBAN ACCURACY PER SECTION 14 (2) OF O.REG 216/10.			
POINT ID	EASTING	NORTHING	
ORP (A)	XXX XXX.XX	4 XXX XXX.XX	
ORP (B)	XXX XXX.XX	4 XXX XXX.XX	
COORDINATES CANNOT, IN THEMSELVES, BE USED TO RE-ESTABLISH CORNERS OR BOUNDARIES SHOWN ON THIS PLAN.			
THE RESULTANT TIE BETWEEN ORP (A) AND ORP (B) IS XXX.XX N XXX'XX" E			

NOTES
 BEARINGS ARE XTM GRID, DERIVED FROM OBSERVED REFERENCE POINTS A AND B, BY REAL TIME NETWORK (RTN) OBSERVATIONS, XTM ZONE XX, NAD83 (CSRS) (2010.0).
 DISTANCES ARE GROUND AND CAN BE CONVERTED TO GRID BY MULTIPLYING BY THE COMBINED SCALE FACTOR OF 0.999xxx.

LEGEND	
■	DENOTES SURVEY MONUMENT FOUND
□	DENOTES SURVEY MONUMENT SET
▣	DENOTES STANDARD IRON BAR
▤	DENOTES SHORT STANDARD IRON BAR
▥	DENOTES IRON BAR
WIT	DENOTES WITNESS
MEAS	DENOTES MEASURED

Committee of Adjustment
 Received | Reçu le
2026-04-10
 City of Ottawa | Ville d'Ottawa
 Comité de dérogation

ALL SET SSIB AND PB MONUMENTS WERE USED DUE TO LACK OF OVERBURDEN AND/OR PROXIMITY OF UNDERGROUND UTILITIES IN ACCORDANCE WITH SECTION 11 (4) OF O.REG. 525/91.

SURVEYOR'S CERTIFICATE
 I CERTIFY THAT:
 1. THIS SURVEY AND PLAN ARE CORRECT AND IN ACCORDANCE WITH THE SURVEY ACT, THE SURVEYORS ACT AND THE LAND TITLES ACT AND THE REGULATIONS MADE UNDER THEM.
 2. THE SURVEY WAS COMPLETED ON

DRAFT

DATE _____
 GEORGE ZERVOS
 ONTARIO LAND SURVEYOR

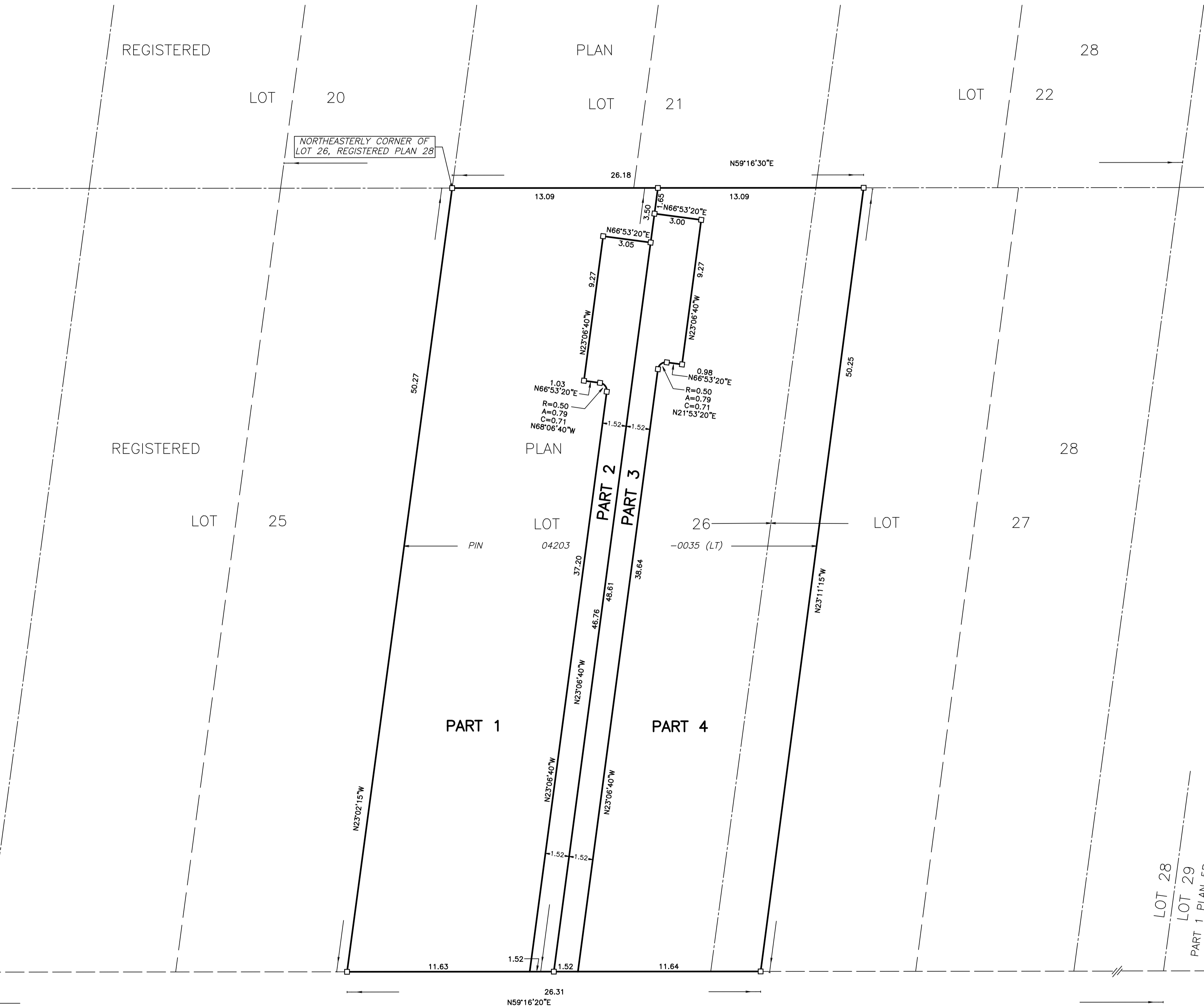
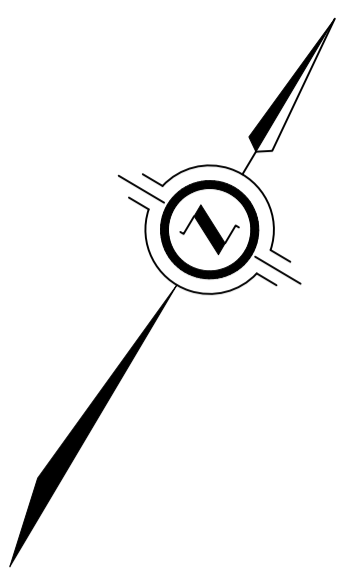
THIS PLAN OF SURVEY RELATES TO AOLS PLAN SUBMISSION FORM NUMBER XXXXXXX

J.D. BARNES LIMITED
 SURVEYING MAPPING GIS
 LAND INFORMATION SPECIALISTS
 62 STEACIE DRIVE, SUITE 103, KANATA, ON K2K 2A9
 T: (613) 731-7244 F: (613) 254-8659 www.jdbarnes.com

DRAWN BY:	KZ	CHECKED BY:	GZ	REFERENCE NO.:	26-10-024-00
DATED:				03/12/2026	

DRAFT FOR APPLICATION

SCHEDULE				
PART	LOT	PLAN	INST/PIN	AREA (sq. m.)
1	PART OF LOT 26	REGISTERED PLAN 28	ALL OF PIN 04203 -0035 (LT)	568.4
2	PART OF LOT 26			85.4
3	PART OF LOTS 26 AND 27			87.4
4				566.3



DRAFT
 PLAN OF SURVEY OF
**LOT 26
 AND PART OF LOT 27**
 REGISTERED PLAN 28
 CITY OF OTTAWA

SCALE 1 : 150
 2.5 0 2.5 5 10 metres

THE INTENDED PLOT SIZE OF THIS PLAN IS 762mm IN WIDTH BY 609mm IN HEIGHT WHEN PLOTTED AT A SCALE OF 1:150
 J.D. BARNES LIMITED

METRIC DISTANCES AND/OR COORDINATES SHOWN ON THIS PLAN ARE IN METRES AND CAN BE CONVERTED TO FEET BY DIVIDING BY 0.3048.

INTEGRATION DATA			
OBSERVED REFERENCE POINTS (ORPs): XTM ZONE XX, NAD83 (CSRS) (2010.0). COORDINATES TO URBAN ACCURACY PER SECTION 14 (2) OF O.REG 216/10.			
POINT ID	EASTING	NORTHING	
ORP (A)	XXX XXX.XX	4 XXX XXX.XX	
ORP (B)	XXX XXX.XX	4 XXX XXX.XX	
COORDINATES CANNOT, IN THEMSELVES, BE USED TO RE-ESTABLISH CORNERS OR BOUNDARIES SHOWN ON THIS PLAN.			
THE RESULTANT TIE BETWEEN ORP (A) AND ORP (B) IS XXX.XX N XXX'XX" E			

NOTES
 BEARINGS ARE XTM GRID, DERIVED FROM OBSERVED REFERENCE POINTS A AND B, BY REAL TIME NETWORK (RTN) OBSERVATIONS, XTM ZONE XX, NAD83 (CSRS) (2010.0).
 DISTANCES ARE GROUND AND CAN BE CONVERTED TO GRID BY MULTIPLYING BY THE COMBINED SCALE FACTOR OF 0.999xxx.

LEGEND

■	DENOTES	SURVEY MONUMENT FOUND
□	DENOTES	SURVEY MONUMENT SET
▣	DENOTES	STANDARD IRON BAR
▤	DENOTES	SHORT STANDARD IRON BAR
▥	DENOTES	IRON BAR
WIT	DENOTES	WITNESS
MEAS	DENOTES	MEASURED

Committee of Adjustment
 Received | Reçu le
2026-04-10
 City of Ottawa | Ville d'Ottawa
Comité de dérogation

ALL SET SSIB AND PB MONUMENTS WERE USED DUE TO LACK OF OVERBURDEN AND/OR PROXIMITY OF UNDERGROUND UTILITIES IN ACCORDANCE WITH SECTION 11 (4) OF O.REG. 525/91.

SURVEYOR'S CERTIFICATE
 I CERTIFY THAT:
 1. THIS SURVEY AND PLAN ARE CORRECT AND IN ACCORDANCE WITH THE SURVEY ACT, THE SURVEYORS ACT AND THE LAND TITLES ACT AND THE REGULATIONS MADE UNDER THEM.
 2. THE SURVEY WAS COMPLETED ON

DRAFT

DATE _____
 GEORGE ZERVOS
 ONTARIO LAND SURVEYOR

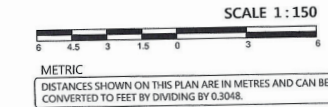
THIS PLAN OF SURVEY RELATES TO AOLS PLAN SUBMISSION FORM NUMBER XXXXXXX

J.D. BARNES LIMITED
 SURVEYING MAPPING GIS
 LAND INFORMATION SPECIALISTS
 62 STEACIE DRIVE, SUITE 103, KANATA, ON K2K 2A9
 T: (613) 731-7244 F: (613) 254-8659 www.jdbarnes.com

DRAWN BY: KZ	CHECKED BY: GZ	REFERENCE NO.: 26-10-024-00
DATED: 03/12/2026		PLOT DATE: 3/27/2026 9:23 AM

FILE: G:\26-10-024-00_07_Springhurst_Avenue\Drawing\PLAN\26-10-024-00_RPLAN.dwg

TOPOGRAPHIC PLAN OF SURVEY OF
 LOT 26
 AND PART OF LOT 27
 REGISTERED PLAN 28
 CITY OF OTTAWA
 MONUMENT-URSO SURVEYING LTD.



SURVEYOR'S CERTIFICATE
 I CERTIFY THAT:
 1. THIS SURVEY AND PLAN ARE CORRECT AND IN ACCORDANCE WITH
 SURVEY'S ACT, THE SURVEYORS ACT, AND THE REGULATIONS MADE
 UNDER THEM.
 2. THE SURVEY WAS COMPLETED ON THE 31ST DAY OF JULY, 2024.

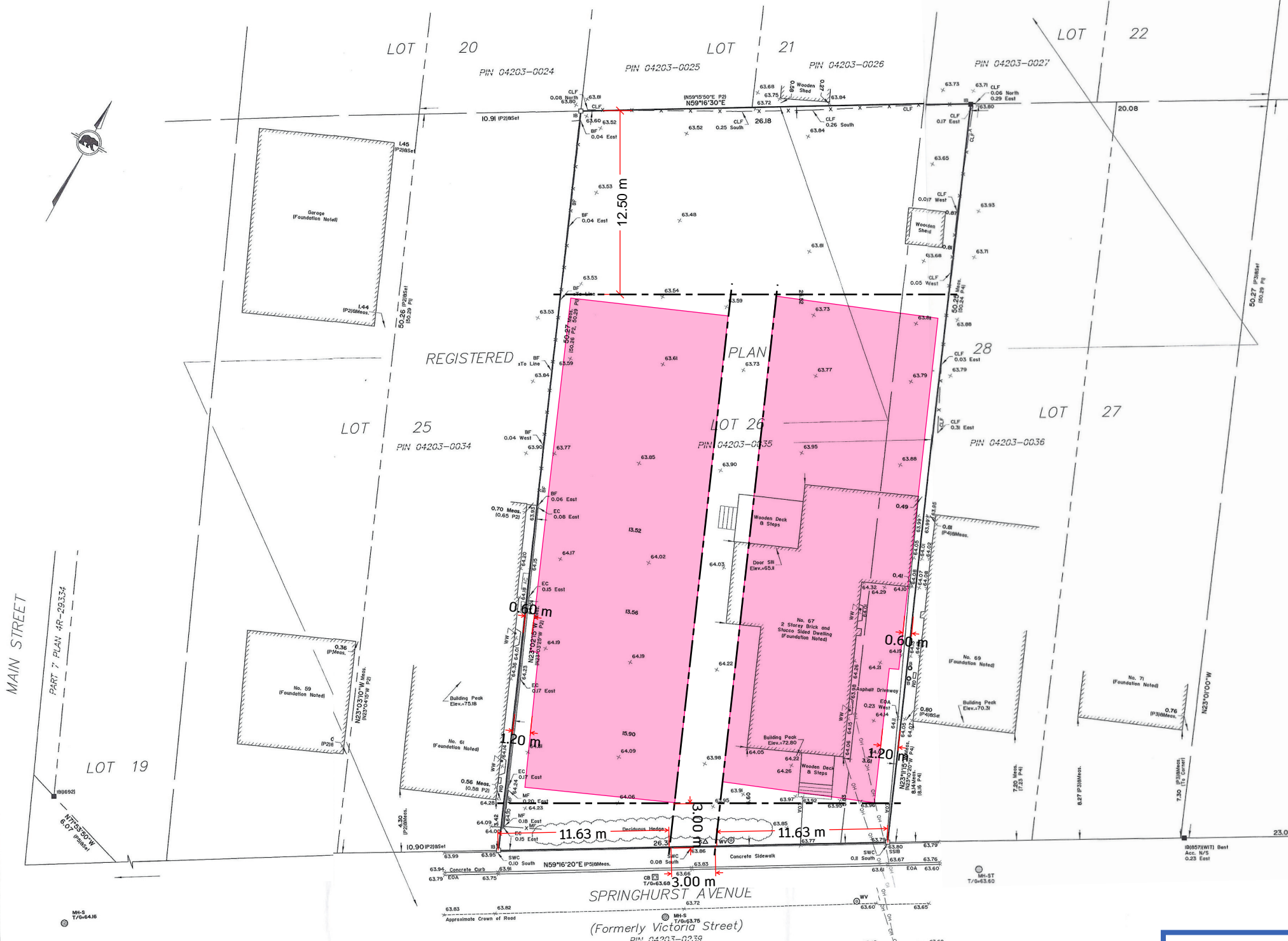
DATE: July 27, 2024
 STEFAN BAZAR
 ONTARIO LAND SURVEYOR

LEGEND

SYMBOL	DENOTES	FOUND SURVEY MONUMENT
□	DENOTES	PLANTED SURVEY MONUMENT
■	IRON BAR	STANDARD IRON BAR
SSB	SHORT STANDARD IRON BAR	WITNESS
(WIT)	ACCEPTED	MEASURED
ACC.	MONUMENT-URSO SURVEYING LTD.	REGISTERED PLAN 28
MEAS.	PLAN BY (AOG) DATED JULY 5TH 1994	PLAN BY (B57) DATED JULY 16TH 1990
(1476)	PLAN BY (B71) DATED JULY 20TH 1987	PLAN 4R-29334
(P1)	AIR CONDITIONER	BOLLARD
(P2)	CATCH BASIN	GAS METER
(P3)	MAINTENANCE HOLE - STORMWATER	MAINTENANCE HOLE - SANITARY
(P4)	WATER VALVE	UTILITY POLE
(P5)	OVERHEAD WIRES	CHAIN-LINK FENCE
AC	SIGN	BOARD FENCE
CB	METAL FENCE	CONCRETE SIDEWALK
GM	EDGE OF CONCRETE	EDGE OF ASPHALT
MH-ST	EXISTING ELEVATIONS	WINDOW WELL
MH-S	EDGE OF ASPHALT	TOP OF GRATE
OV	WINDOW WELL	FIRE HYDRANT
UP	TOP OF GRATE	
WFH	FIRE HYDRANT	

BEARING NOTES
 BEARINGS ARE MTM GRID, DERIVED FROM CAN-NET GPS OBSERVATIONS AND
 ARE REFERRED TO THE CENTRAL MERIDIAN 76°5' WEST LONGITUDE OF MTM
 ZONE 9 NAD83 (CSRS(2010)).
 FOR BEARING COMPARISONS A ROTATION OF 0°37'15" COUNTER-CLOCKWISE
 WAS APPLIED TO PLAN P2, 0°35'40" COUNTER-CLOCKWISE TO P3 AND 0°35'
 COUNTER-CLOCKWISE TO P4 TO CONVERT TO GRID BEARINGS.

SITE AREA
 1307.5 SQ METRES



UTILITY NOTE
 THIS DRAWING DOES NOT SERVE AS A COMPREHENSIVE CONFIRMATION OF
 ALL UTILITIES PRESENT. IT IS THE USER'S RESPONSIBILITY TO CONTACT THE
 RELEVANT UTILITY AUTHORITIES FOR VERIFICATION.
 ONLY UTILITIES VISIBLE ON THE SURFACE HAVE BEEN IDENTIFIED
 PRIOR TO ANY ACTIVITIES SUCH AS DIGGING. IT IS MANDATORY TO OBTAIN A
 FIELD LOCATION OF UNDERGROUND UTILITIES FROM THE APPROPRIATE
 AUTHORITY.

ELEVATION NOTE
 ELEVATIONS ARE GEODETIC AND REFERRED TO THE CANADIAN
 GEODETIC VERTICAL DATUM (CGVD2878) BY DIRECT MEASUREMENT
 TO A REAL TIME NETWORK.
 THE USER OF THIS INFORMATION BEARS THE RESPONSIBILITY TO CONFIRM
 THAT THE JOB BENCHMARK REMAINS UNALTERED AND UNDISTURBED, AND
 THAT ITS RELATIVE HEIGHT AND DESCRIPTION ALIGN WITH THE DETAILS
 PRESENTED IN THIS PLAN.

Committee of Adjustment
 Received | Reçu le
2026-04-10
 City of Ottawa | Ville d'Ottawa
 Comité de dérogation

