

This document is presented in the language it was provided.  
Ce document est présenté dans la langue dans laquelle il a été fourni.

**Tree Information Report**

Date: April 15, 2026



**Author:** Max Carmanico, Director @ Independent Tree Care Inc.  
**Qualification:** ISA Certified Arborist # ON2555-A  
**Cell phone:** (613) 720 0274  
**E-mail:** [maxwellcarmanico@gmail.com](mailto:maxwellcarmanico@gmail.com)  
**Website:** [www.indy-tree.ca](http://www.indy-tree.ca)  
**Business address:** 101 Brae Cres, Stittsville ON, K2S 1N9

**Client information**

**Name:** Stefano Sciani  
**Business Address:** 8048 Mitch Owens Rd, Greely, ON K0A 1V0  
**Telephone:** 613.612.1553  
**Email:** [stefano@onyxdesignbuild.com](mailto:stefano@onyxdesignbuild.com)  
  
**Site address:** 177 Compton, Ottawa, ON K2B 5A6

**Committee of Adjustment**  
 Received | Reçu le  
  
**2026-04-16**  
  
 City of Ottawa | Ville d'Ottawa  
**Comité de dérogation**

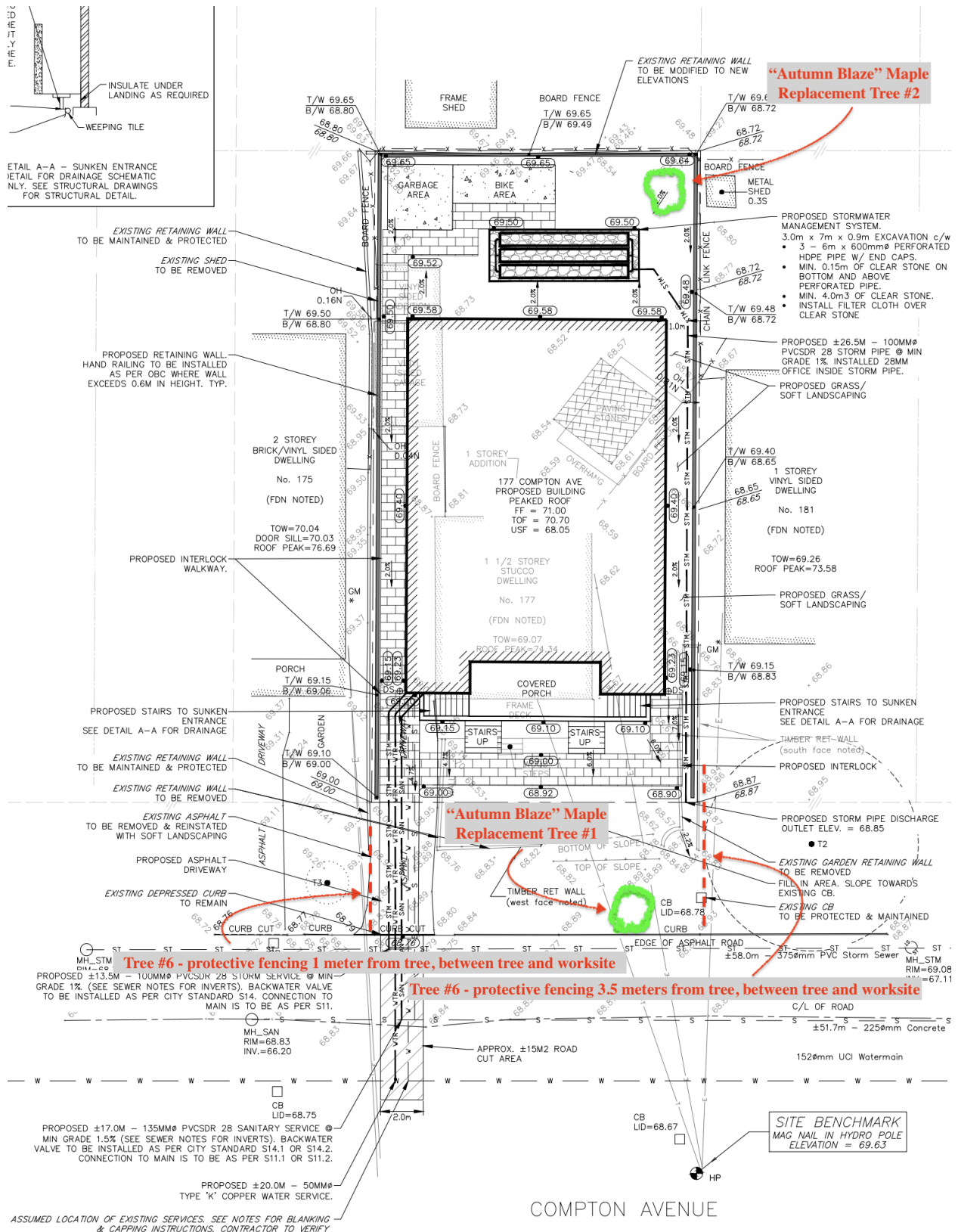
**Reason for application:**

***Infill / Development:*** minor variance.

**Tree Information:**

		Tree Inventory		Date: December 20, 2024			
Tree #	Image #	Species	DBH (centimeters)	Location	Ownership	Condition	Retention/ Removal
1	1	Japanes Lilac ( <i>syringa reticulata</i> )	9	Front yard, between 177 and 175 compton	city	Healthy, virile, no visible defects, good structure.	retain
2	2	Norway Maple ( <i>acer platanoides</i> )	30.5	Southeast corner of backyard	177 Compton	Healthy, virile, no visible defects, good structure.	remove
3	3	Manitoba maple ( <i>acer negundo</i> )	<10	rear neighbors along top of retaining wall	180 woodroffe	Healthy group of shrubs, 5 main stems.	retain
4	4	Spire cedar ( <i>thuja occidentalis</i> )	15	rear neighbors along top of retaining wall	180 woodroffe	Healthy, virile, no visible defects.	retain
5	5	Norway Maple ( <i>acer platanoides</i> )	11	rear neighbors along top of retaining wall	180 woodroffe	Healthy tree, no visible defects.	retain
6	6	Norway Maple ( <i>acer</i> )	35	front yard 181 compton	city	Healthy tree, no visible defects, well maintained, good structure.	retain

# Tree protection and mitigation measures:







**Tree protection and mitigation measures (continued):**

Tree # 1 : City owned Lilac tree in the front yard of 171 Compton, tree protective fencing will be erected between the tree and the worksite, along the property line and greater than 0.9 meters from the base of the tree to prevent activities that could cause disturbance of the crz, cause soil compaction or change the drainage near the tree.

Trees # 3, 4 5: These trees are located in the backyard of 180 woodroffe, and sit on top of a 3 foot high retaining wall, and behind a fence. No further protection methods required.

Tree # 6: City owned norway maple tree in the front yard of 181 compton, tree protective fencing will be erected between the tree and the worksite, 3.5 meters from the base of the tree to prevent activities that could cause disturbance of the crz, cause soil compaction or change the drainage near the tree.

**Additional Notes:**

1. The extent of excavation will be roughly 3 feet from the extent of the proposed building.
2. There are no indications of plans that require work to be carried out within the CRZ of these protected trees.
3. The catch basin in the backyard will drain along a path into the front yard and into the existing culvert.

## Tree #2 - removed without prior approval

Criterion	Detail
<b>Species</b>	Norway Maple (Acer Platanoides) Invasive species
<b>Location</b>	Growing in a very bad location along fenceline
<b>Damage</b>	The trees growth had broken the existing fence
<b>Neighbour Consent</b>	Verbally consented to removal; consent form can be obtained
<b>DBH Conflict</b>	2025 report: 30.5cm New measurement (error due to snow) March 2026 : 29.5cm Final measured stump April 2026: ~31cm
<b>Action Taken</b>	Removed without prior approval due to perceived strong rationale and inaccurate measurement.
<b>Outcome</b>	City Forester (Jason Chicquen) issued a fine.  Next steps: adhering to the tree retention and replacement plan, as outlined by the city of Ottawa, in the case of infill/development. Tree #2 will be compensated for at a 2:1 planting ratio.

## Proposed Next Steps

1. **Neighbour Consent:** Obtain a signed consent form from the neighbour confirming their agreement to the tree's removal.
2. **Future Compliance:** Establish a clear protocol for future tree assessment and ensure all required permits are obtained *before* any further tree removal or significant alteration.

## **Tree Replacement Plan for Tree #2**

The removal of the existing tree at Location #2 necessitates its replacement with **two** high-quality, suitable specimens to maintain the aesthetic and ecological value of the property. The selected replacement trees will be an '**Autumn Blaze' Maple** (*Acer x freemanii* 'Jeffersred').

### **Species Rationale and Suitability**

The 'Autumn Blaze' Maple has been specifically chosen for its proven resilience and rapid growth rate, making it an excellent long-term investment for the landscape. This cultivar is a hybrid of Silver Maple and Red Maple, inheriting the fast-growing nature of the former and the structural strength and vibrant colour of the latter.

- **Environmental Suitability:** The 'Autumn Blaze' Maple is highly tolerant of a wide range of soil conditions, including urban environments, and exhibits good resistance to common pests and diseases. Its adaptability makes it well-suited to the local climate.
- **Proximity Considerations:** The mature size and root system of the 'Autumn Blaze' are considered non-invasive when planted in an appropriate location, ensuring minimal future conflict with nearby property lines, foundations, and existing subterranean utilities.
- **Safety Clearance:** Crucially, a site assessment confirmed there are **no overhead electrical wires or utility cables** in the immediate proximity of the planting location of **Replacement tree #2** in the rear yard, allowing the tree to reach its full natural height without the need for detrimental pruning or clearance cuts. The overhead lines in the front yard, will be considered when confirming the exact location of **Replacement tree #1**.

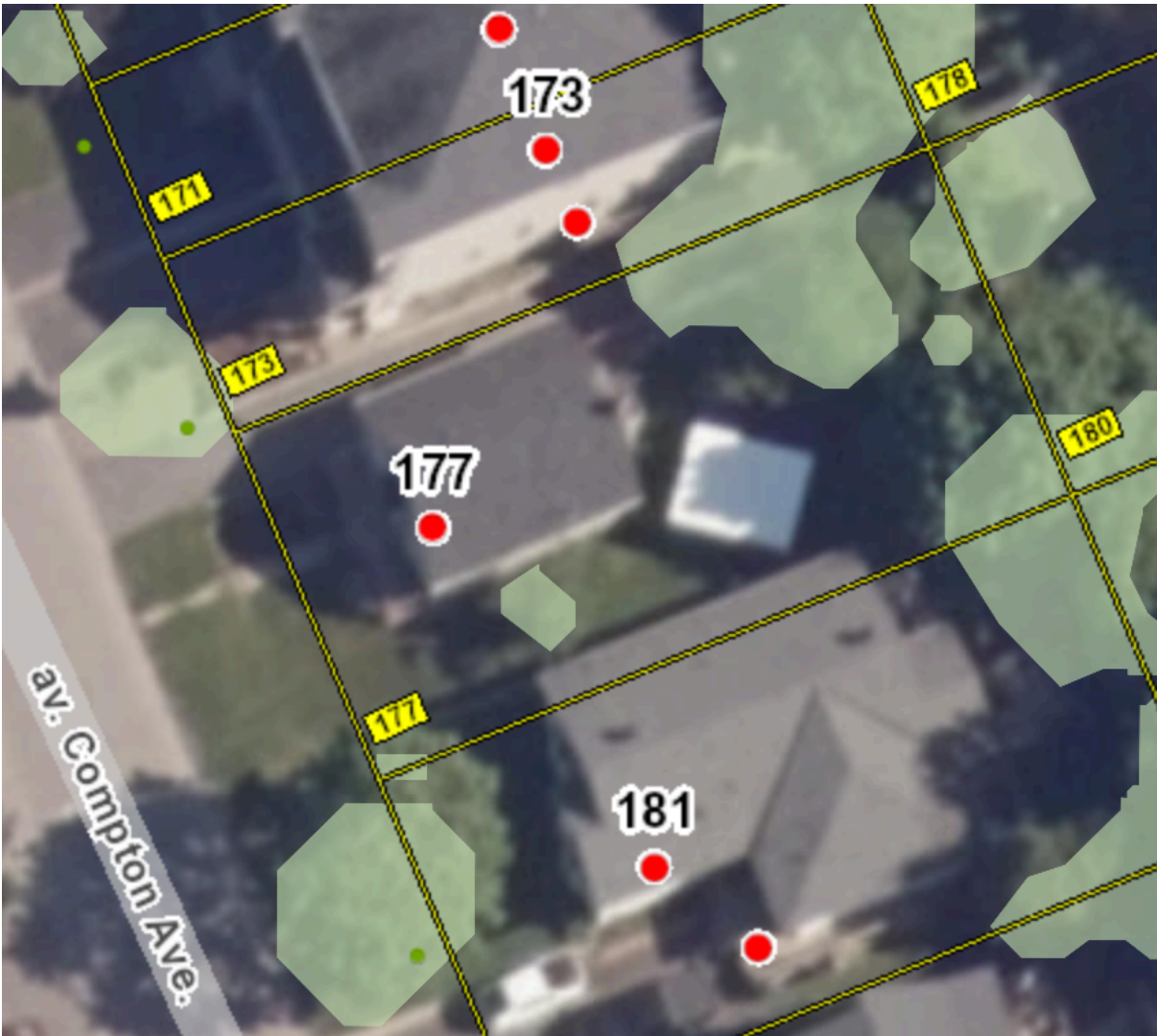
### **Required Tree Specifications and Sourcing**

To ensure the new tree establishes quickly and provides immediate visual impact, the following minimum specifications must be met by the supplier:

- **Minimum Caliper:** The trunk caliper (measured six inches above the ground level) must be at least **75mm (approximately 3 inches)**.
- **Minimum Height:** The tree shall possess an approximate height of **20 feet** upon delivery and planting.
- **Supplier Details:** The tree will be sourced and supplied by **Alex Fait of Fait Construction**, located in Greely. Mr. Fait's firm is responsible for ensuring the tree meets all specified quality and health standards prior to delivery and installation.

**Summary of Action:** The replacement trees at 177 Compton Ave, are confirmed to be two 'Autumn Blaze' Maple, sourced by Alex Fait, and meeting the minimum dimensions of 75mm caliper and 20 feet in height, with full environmental and proximity suitability confirmed

**Geottawa Map:**



**Images:**



*Tree # 1*



Tree # 2



*Tree # 3 (manitoba maple stems) and 4 (cedar right)*



Tree # 5



Tree # 6

## City of Ottawa Documents:

Trees to be protected will follow guidelines as dictated by the city of Ottawa and are as follows:  
(As quoted from [Tree Protection By-law | City of Ottawa](#) )

*The primary purpose of the City of Ottawa's Tree Protection By-law is to ensure that trees are protected from injury or destruction. The by-law identifies guidelines to follow when working around trees since trees can be seriously injured if their roots are compacted, cut or damaged.*

*The Tree Protection By-law requires that anyone working near protected trees must, unless otherwise authorized by the City:*

- *Erect a 1.2 m high fence around the outer edge of the critical root zone (CRZ) of trees prior to beginning other site work, and maintain the fence until the work is complete (see the [City's Tree Protection Specification \[ PDF 377KB \]](#)Opens in a new tab or window(link is external) for more information)*
- *Not place any material or equipment within the CRZ of the tree*
- *Not raise or lower the existing grade within the CRZ of a tree*
- *Not extend any hard surface or significantly change landscaping within the CRZ of a tree*
- *Not attach any signs, notices or posters to any tree, except as required by this by-law for trees to be removed*
- *Not damage the root system, trunk or branches of any tree*
- *Ensure that exhaust fumes from equipment are not directed towards any tree's canopy*

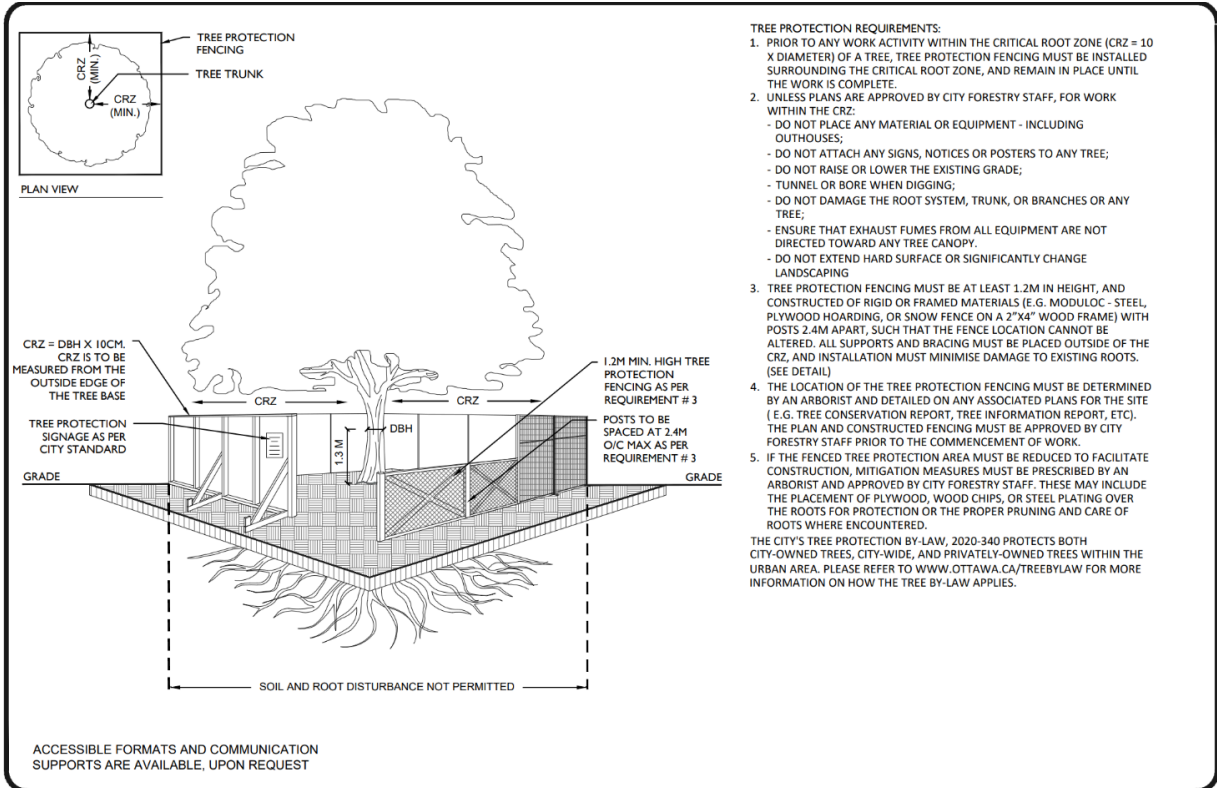
*The critical root zone (CRZ) is established as being 10 centimetres from the trunk of a tree for every centimetre of trunk diameter. The trunk diameter is measured at a height of 1.3 metres for trees of 15 centimetres diameter and greater and at a height of 0.3 metres for trees of less than 15 centimetres diameter.*

*It is an offence under the Tree Protection By-law to fail to adequately protect a tree that has not been approved for removal.*

### **Recommended actions for replacement trees:**

To ensure the continuity of the urban canopy and to comply with municipal forestry standards, replacement trees will follow these guidelines:

1. **Minimum Caliper:** The replacement tree must have a minimum caliper of **75mm** (approximately 3 inches) at breast height upon planting. This size is mandated to give the new tree a strong start and a higher chance of successful establishment.
2. **Species Selection:** The chosen species must be **appropriate for the growing space and site conditions**. This requires careful consideration of factors such as:
  - **Available Rooting Volume:** Ensuring there is adequate space for future root growth without conflict with infrastructure (e.g., sidewalks, utilities).
  - **Soil Type and Drainage:** Selecting a species tolerant of the existing soil composition and moisture levels.
  - **Sunlight Exposure:** Matching the tree's light requirements (full sun, partial shade) to the site's orientation.
  - **Hardiness Zone:** Confirming the tree is cold-hardy for the region.
  - **Mature Size:** Choosing a species whose mature height and canopy spread will not exceed the physical limitations of the site or conflict with overhead wires or adjacent buildings.
3. **Compliance:** All aspects of the removal and replacement operation, including tree selection, planting techniques, and post-planting maintenance, must be carried out **in accordance with City of Ottawa guidelines and current arboricultural best practices**. This includes obtaining any necessary permits prior to removal and ensuring proper warranty and establishment care for the new tree. Tree Replacement Specification.



- TREE PROTECTION REQUIREMENTS:**
1. PRIOR TO ANY WORK ACTIVITY WITHIN THE CRITICAL ROOT ZONE (CRZ = 10 X DIAMETER) OF A TREE, TREE PROTECTION FENCING MUST BE INSTALLED SURROUNDING THE CRITICAL ROOT ZONE, AND REMAIN IN PLACE UNTIL THE WORK IS COMPLETE.
  2. UNLESS PLANS ARE APPROVED BY CITY FORESTRY STAFF, FOR WORK WITHIN THE CRZ:
    - DO NOT PLACE ANY MATERIAL OR EQUIPMENT - INCLUDING OUTHOUSES;
    - DO NOT ATTACH ANY SIGNS, NOTICES OR POSTERS TO ANY TREE;
    - DO NOT RAISE OR LOWER THE EXISTING GRADE;
    - TUNNEL OR BORE WHEN DIGGING;
    - DO NOT DAMAGE THE ROOT SYSTEM, TRUNK, OR BRANCHES OR ANY TREE;
    - ENSURE THAT EXHAUST FUMES FROM ALL EQUIPMENT ARE NOT DIRECTED TOWARD ANY TREE CANOPY.
    - DO NOT EXTEND HARD SURFACE OR SIGNIFICANTLY CHANGE LANDSCAPING
  3. TREE PROTECTION FENCING MUST BE AT LEAST 1.2M IN HEIGHT, AND CONSTRUCTED OF RIGID OR FRAMED MATERIALS (E.G. MODULOC - STEEL, PLYWOOD HOARDING, OR SNOW FENCE ON A 2"X4" WOOD FRAME) WITH POSTS 2.4M APART, SUCH THAT THE FENCE LOCATION CANNOT BE ALTERED. ALL SUPPORTS AND BRACING MUST BE PLACED OUTSIDE OF THE CRZ, AND INSTALLATION MUST MINIMISE DAMAGE TO EXISTING ROOTS. (SEE DETAIL)
  4. THE LOCATION OF THE TREE PROTECTION FENCING MUST BE DETERMINED BY AN ARBORIST AND DETAILED ON ANY ASSOCIATED PLANS FOR THE SITE (E.G. TREE CONSERVATION REPORT, TREE INFORMATION REPORT, ETC). THE PLAN AND CONSTRUCTED FENCING MUST BE APPROVED BY CITY FORESTRY STAFF PRIOR TO THE COMMENCEMENT OF WORK.
  5. IF THE FENCED TREE PROTECTION AREA MUST BE REDUCED TO FACILITATE CONSTRUCTION, MITIGATION MEASURES MUST BE PRESCRIBED BY AN ARBORIST AND APPROVED BY CITY FORESTRY STAFF. THESE MAY INCLUDE THE PLACEMENT OF PLYWOOD, WOOD CHIPS, OR STEEL PLATING OVER THE ROOTS FOR PROTECTION OR THE PROPER PRUNING AND CARE OF ROOTS WHERE ENCOUNTERED.
- THE CITY'S TREE PROTECTION BY-LAW, 2020-340 PROTECTS BOTH CITY-OWNED TREES, CITY-WIDE, AND PRIVATELY-OWNED TREES WITHIN THE URBAN AREA. PLEASE REFER TO [WWW.OTTAWA.CA/TREEBYLAW](http://WWW.OTTAWA.CA/TREEBYLAW) FOR MORE INFORMATION ON HOW THE TREE BY-LAW APPLIES.

ACCESSIBLE FORMATS AND COMMUNICATION SUPPORTS ARE AVAILABLE, UPON REQUEST

	<b>TREE PROTECTION SPECIFICATION</b> <small>TO BE IMPLEMENTED FOR RETAINED TREES, BOTH ON SITE AND ON ADJACENT SITES, PRIOR TO ANY TREE REMOVAL OR SITE WORKS AND MAINTAINED FOR THE DURATION OF WORK ACTIVITIES ON SITE.</small>	SCALE: NTS
		DATE: MARCH 2021
		DRAWING NO.: 1 of 1



Signed:

Date: April 15, 2026

Arborist: Maxwell Carmanico