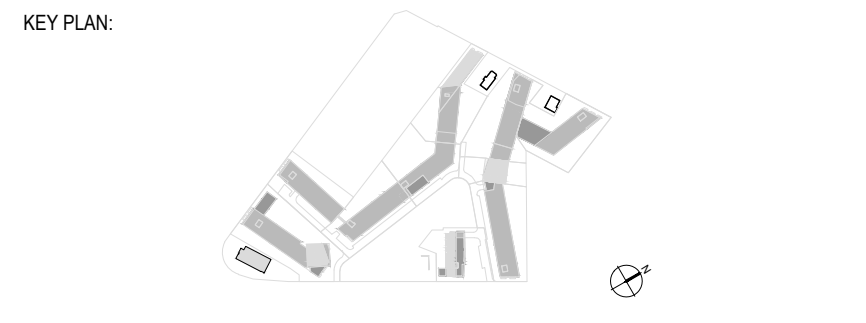
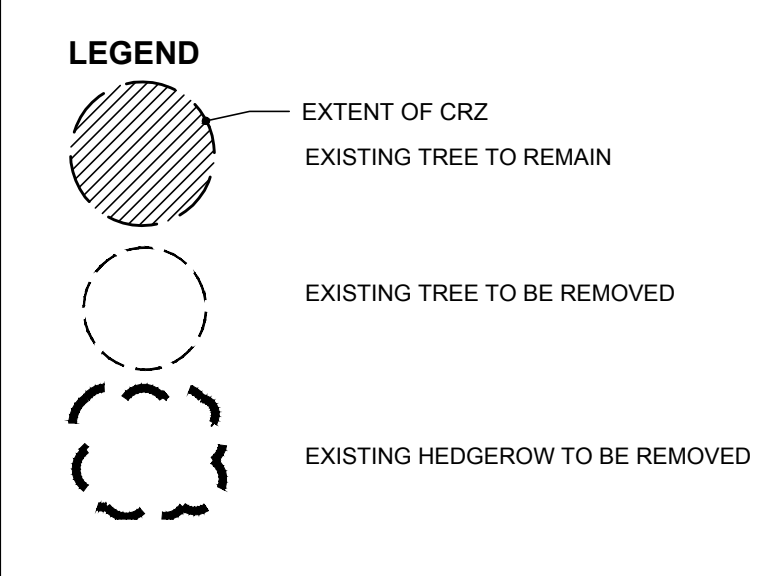


EXISTING TREE LIST

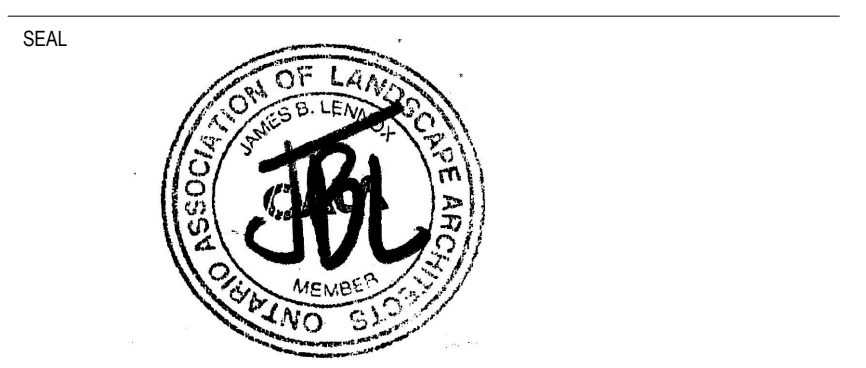
KEY	QTY	BOTANICAL NAME	COMMON NAME	SIZE	CONDITION	REMARKS	OWNERSHIP	COMMENTS
1	1	<i>Ulmus pumila</i>	Siberian Elm	180mm DBH	GOOD	To be removed	1500 Merivale	Tree conflicts with u/g parking
2	1	<i>Populus deltoides</i>	Eastern Cottonwood	210mm DBH	GOOD	To be removed	1500 Merivale	Tree conflicts with u/g parking
3	7	<i>Populus deltoides</i>	Eastern Cottonwood	100-370mm DBH	GOOD	To be removed	1500 Merivale	Hedgerow conflicts with u/g parking
4	1	<i>Ulmus americana</i>	American Elm	170mm DBH	FAIR	To be removed	1500 Merivale	Tree conflicts with u/g parking
5	*	<i>Fraxinus spp.</i>	Ash	100-150mm DBH	DEAD-FAIR	To be removed	1500 Merivale	Hedgerow conflicts with u/g parking
6	*	<i>Acer negundo</i>	Manitoba Maple	100-150mm DBH	GOOD	To be removed	1500 Merivale	Hedgerow conflicts with u/g parking
7	4	<i>Populus deltoides</i>	Eastern Cottonwood	200-300mm DBH	GOOD	To be removed	1500 Merivale	Hedgerow conflicts with u/g parking
8	1	<i>Ulmus pumila</i>	Siberian Elm	400mm DBH	GOOD	To remain	1500 Merivale	To be removed in future phase
9	1	<i>Ulmus pumila</i>	Siberian Elm	220mm DBH	GOOD	To be removed	1500 Merivale	Surrounded by asphalt being removed
10	1	<i>Ulmus pumila</i>	Siberian Elm	150mm DBH	GOOD	To be removed	1500 Merivale	Surrounded by asphalt being removed
11	1	<i>Ulmus pumila</i>	Siberian Elm	330mm DBH	GOOD	To be removed	1500 Merivale	Surrounded by asphalt being removed
12	1	<i>Ulmus pumila</i>	Siberian Elm	210mm DBH	GOOD	To be removed	1500 Merivale	Conflicts with proposed retaining wall
13	1	<i>Ulmus pumila</i>	Siberian Elm	150mm DBH	GOOD	To be removed	1500 Merivale	Conflicts with proposed retaining wall



No.	DESCRIPTION	ML	DATE
1	ISSUED FOR COORDINATION	ML	03/21/2024

REVISION:

- THE GENERAL CONTRACTOR:
- SHALL BE RESPONSIBLE FOR VERIFYING ALL DIMENSIONS ON SITE TO ENSURE COMPLIANCE WITH THE DIMENSIONS GIVEN ON THE DRAWINGS.
 - SHALL BE RESPONSIBLE TO IMMEDIATELY SUBMIT A REPORT TO THE ARCHITECT OR ENGINEER OUTLINING ANY INACCURACIES.
 - SHALL NOT TAKE SCALED MEASUREMENTS OFF THE DRAWINGS.
 - ANY INDIVIDUAL OR FIRM THAT HAVE RECEIVED ELECTRONIC DOCUMENT SHALL USE THEM AT THEIR OWN RISK. ONLY ORIGINAL DRAWINGS, STAMPED BY THE ARCHITECT, MAY BE USED FOR CONSTRUCTION.



PROJECT: **1500 MERIVALE**

DRAWING TITLE: **TREE CONSERVATION REPORT - PHASE 1**

DESIGN: JL APPROVED: JL
 DRAWN: ML DATE: MARCH 2024
 VERIFIED: JL SCALE: AS NOTED

PROJECT NO: **21CLG2145** DRAWING NO: **TCR**

1 TREE CONSERVATION REPORT
 TCR SCALE 1:200

- GENERAL NOTES:
- It is the responsibility of the appropriate contractor or official to report any errors, omissions or discrepancies on this plan with actual site conditions to the Landscape Architect before proceeding with construction.
 - The contractor is to notify all utility companies and authorities prior to any excavation and ascertain locations of underground services.
 - The contractor is to reinstate all areas and items damaged as a result of construction activity.
 - The contractor is to comply with all pertinent codes and by-laws.
 - The contractor is to maintain a positive surface run-off throughout the entire construction period.
 - The Landscape Architect is not responsible for subsurface conditions.
 - The contractor is to identify all existing trees to remain on site with the Landscape Architect prior to construction.

Committee of Adjustment
 Received | Reçu le
 2026-04-24
 City of Ottawa | Ville d'Ottawa
 Comité de dérogation