



REVISION TABLE		
NUMBER	DATE	REVISION BY / DESCRIPTION

Proposed
Rendering

DRAWINGS PROVIDED BY:
Main Renovations

DATE:
5/12/2022

SCALE:

SHEET:

P-1



REVISION TABLE	
NUMBER	DATE

Proposed
Rendering

Drawings Provided By:
Main Renovations

DATE:

5/12/2022

SCALE:

SHEET:

P-2

Minor Variance 2: Requested height
10.5m to accommodate anticipated
basement height



Elevation 1

REVISION TABLE	
NUMBER	DATE

Proposed
South Elevation

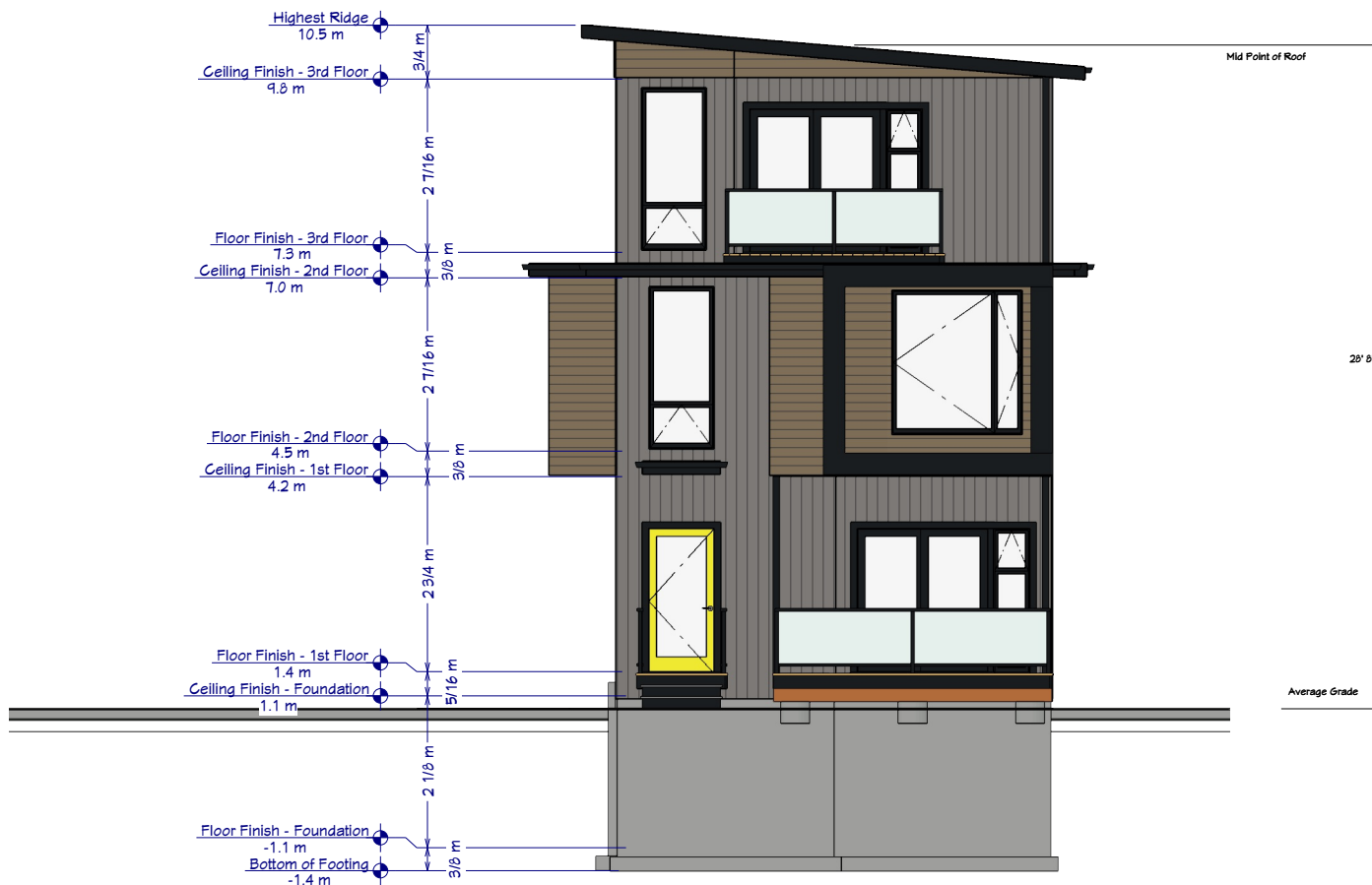
DRAWINGS PROVIDED BY:
Main Renovations

DATE:
5/12/2022

SCALE:

SHEET:

P-3



Elevation 2

REVISION TABLE	
NUMBER	DATE

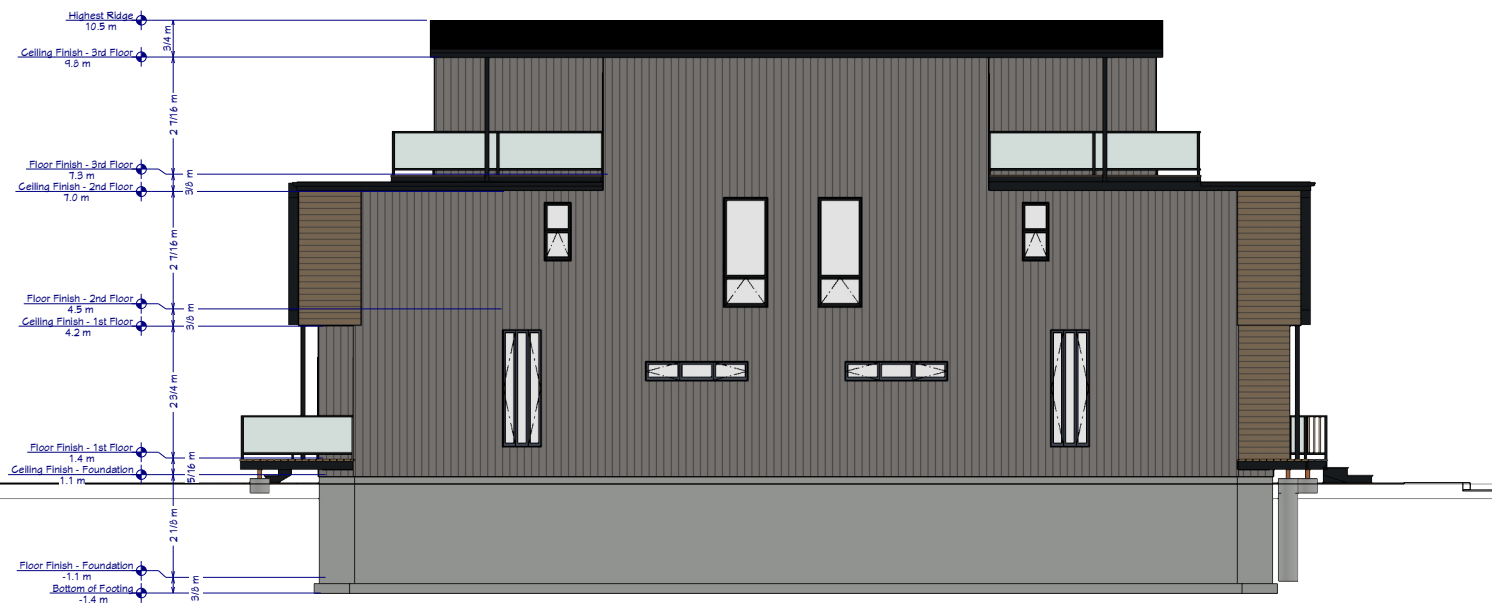
Proposed
Rear Elevation

DRAWINGS PROVIDED BY:
Main Renovations

DATE:
5/12/2022

SCALE:

SHEET:
P-4



Elevation 3

REVISION TABLE	
NUMBER	DATE

--

Proposed
North Elevation

DRAWINGS PROVIDED BY:
Main Renovations

DATE:
5/12/2022

SCALE:

SHEET:

P-5



Elevation 4

REVISION TABLE	
NUMBER	DATE

Proposed
Front Elevation

Drawings Provided By:
Main Renovations

DATE:

5/12/2022

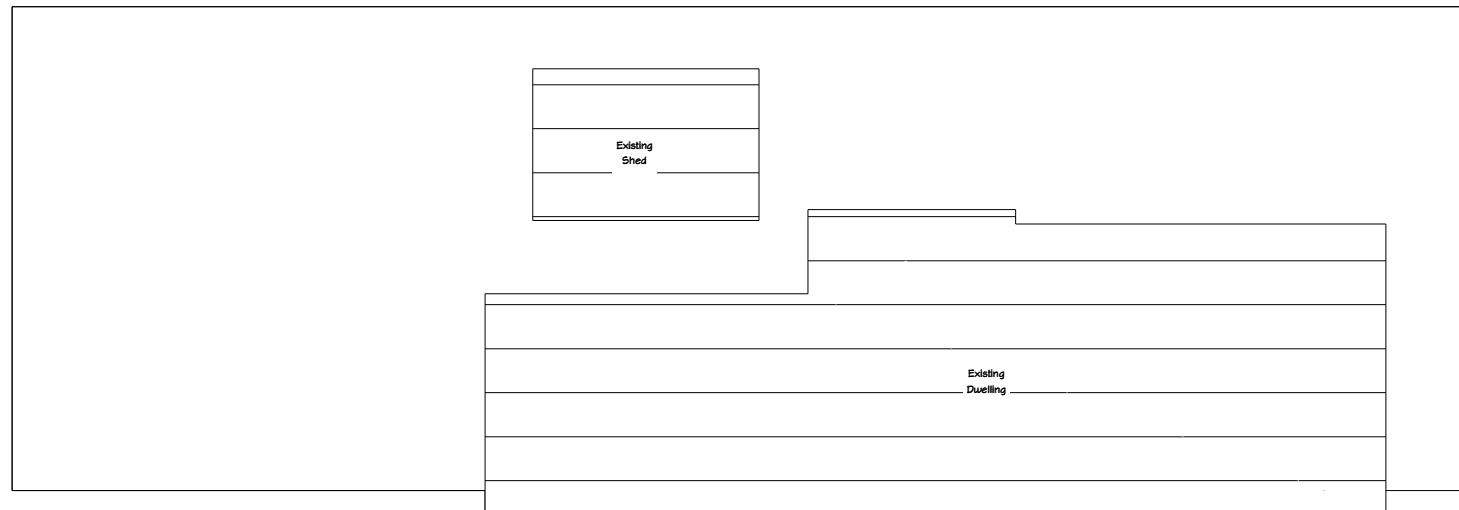
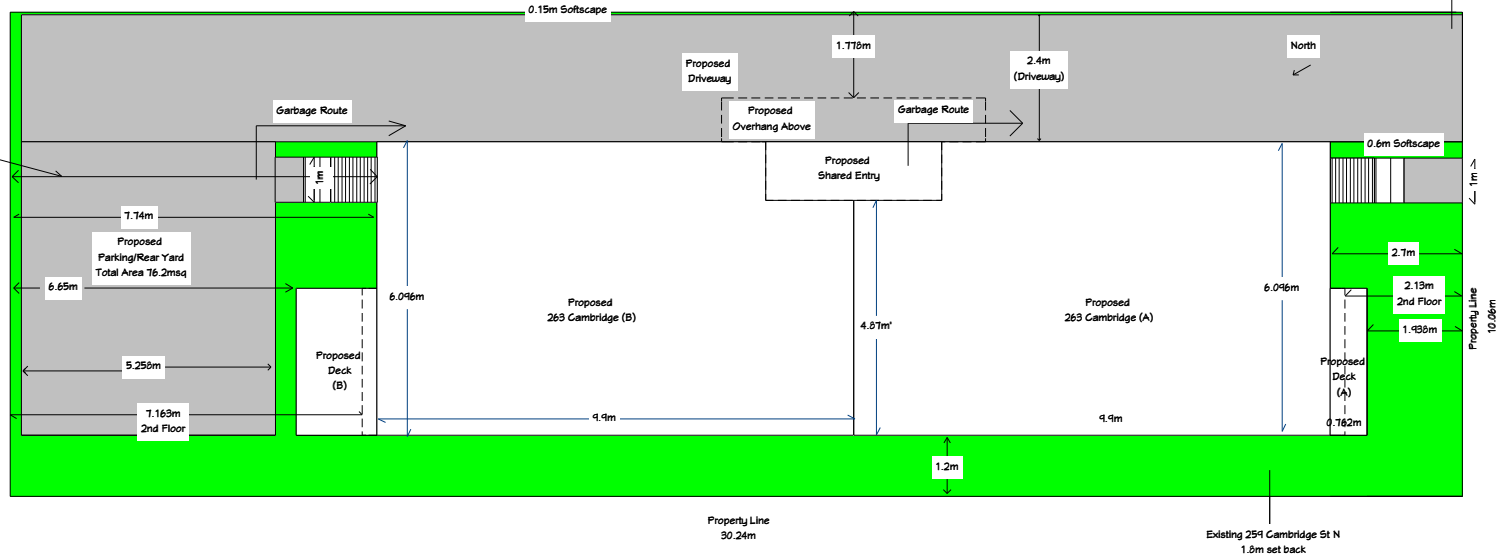
SCALE:

SHEET:

P-6

Scale
10'
(3.048m)

Minor Variance 1; To
reduce setback to 1.74m
(variance 1.16m)



REVISION TABLE	
NUMBER	DATE / REVISION BY / DESCRIPTION

Existing And
Proposed
Site Plans

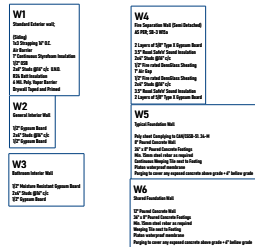
DRAWINGS PROVIDED BY:
Main Renovations

DATE:
5/12/2022

SCALE:

SHEET:

P-7

[illegible]

1st Floor Floorplan

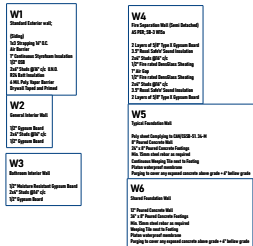
Drawings provided by:

Main Renovations

DATE:
5/12/2022

SCALE:

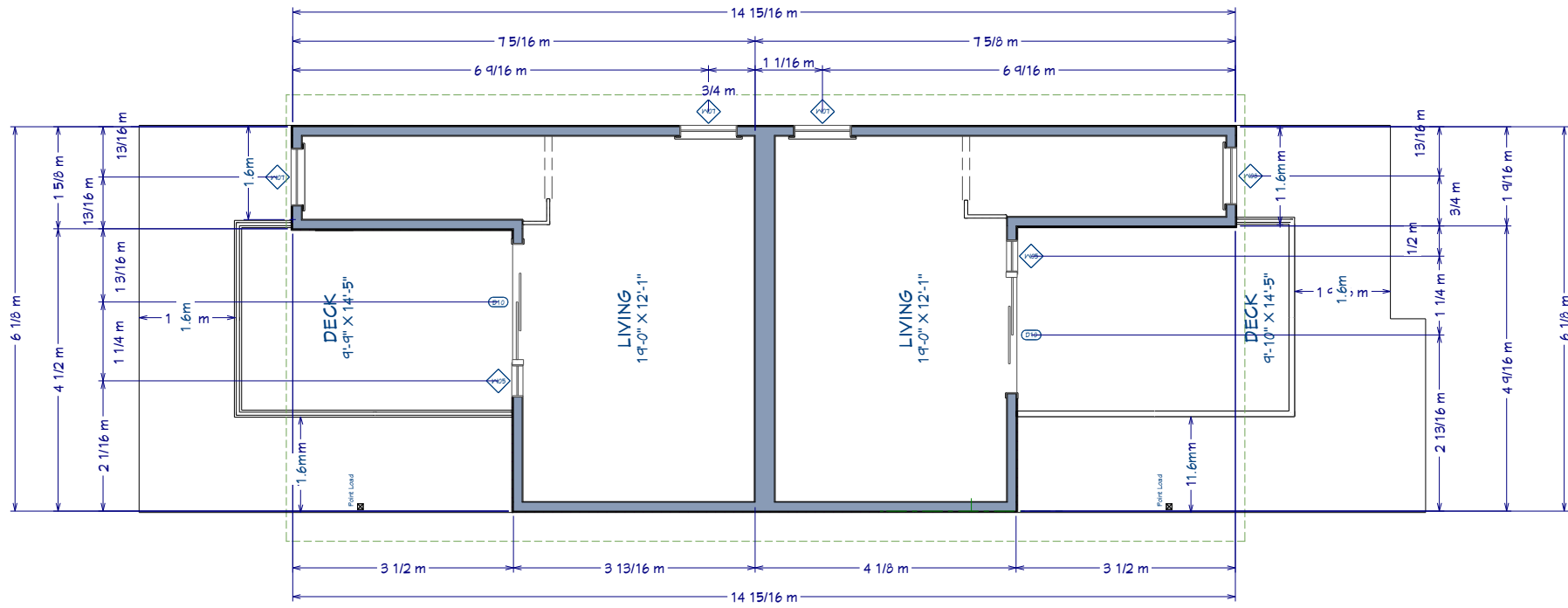
SHEET:
P-9



R1
Low-Slope Roof

Modified Bitumen Roofing Membrane AS PER 9.24.13. OF DBC
1/2" Base Layer AS PER 9.24.13. OF DBC
SDP DSB Shingles
Pre-Engineered Trusses (As Per Manufacturers Engineering Drawing)
Min 1400 Fiberglass Batt Insulation
4 MIL Poly V Membrane
7" of Drapping GPM c/c
1/2" Gypsum Board

DATE:	5/12/2022
SCALE:	
SHEET:	P-10



- W1**
Window Detail Ref.
1/2" x 1/2" x 1/2" x 1/2"
1/2" x 1/2" x 1/2" x 1/2"
1/2" x 1/2" x 1/2" x 1/2"
1/2" x 1/2" x 1/2" x 1/2"
1/2" x 1/2" x 1/2" x 1/2"
1/2" x 1/2" x 1/2" x 1/2"
1/2" x 1/2" x 1/2" x 1/2"
1/2" x 1/2" x 1/2" x 1/2"
1/2" x 1/2" x 1/2" x 1/2"
1/2" x 1/2" x 1/2" x 1/2"
- W2**
Window Detail Ref.
1/2" x 1/2" x 1/2" x 1/2"
1/2" x 1/2" x 1/2" x 1/2"
1/2" x 1/2" x 1/2" x 1/2"
1/2" x 1/2" x 1/2" x 1/2"
1/2" x 1/2" x 1/2" x 1/2"
1/2" x 1/2" x 1/2" x 1/2"
1/2" x 1/2" x 1/2" x 1/2"
1/2" x 1/2" x 1/2" x 1/2"
1/2" x 1/2" x 1/2" x 1/2"
1/2" x 1/2" x 1/2" x 1/2"
1/2" x 1/2" x 1/2" x 1/2"
- W3**
Window Detail Ref.
1/2" x 1/2" x 1/2" x 1/2"
1/2" x 1/2" x 1/2" x 1/2"
1/2" x 1/2" x 1/2" x 1/2"
1/2" x 1/2" x 1/2" x 1/2"
1/2" x 1/2" x 1/2" x 1/2"
1/2" x 1/2" x 1/2" x 1/2"
1/2" x 1/2" x 1/2" x 1/2"
1/2" x 1/2" x 1/2" x 1/2"
1/2" x 1/2" x 1/2" x 1/2"
1/2" x 1/2" x 1/2" x 1/2"
1/2" x 1/2" x 1/2" x 1/2"
- W4**
Window Detail Ref.
1/2" x 1/2" x 1/2" x 1/2"
1/2" x 1/2" x 1/2" x 1/2"
1/2" x 1/2" x 1/2" x 1/2"
1/2" x 1/2" x 1/2" x 1/2"
1/2" x 1/2" x 1/2" x 1/2"
1/2" x 1/2" x 1/2" x 1/2"
1/2" x 1/2" x 1/2" x 1/2"
1/2" x 1/2" x 1/2" x 1/2"
1/2" x 1/2" x 1/2" x 1/2"
1/2" x 1/2" x 1/2" x 1/2"
1/2" x 1/2" x 1/2" x 1/2"
- W5**
Window Detail Ref.
1/2" x 1/2" x 1/2" x 1/2"
1/2" x 1/2" x 1/2" x 1/2"
1/2" x 1/2" x 1/2" x 1/2"
1/2" x 1/2" x 1/2" x 1/2"
1/2" x 1/2" x 1/2" x 1/2"
1/2" x 1/2" x 1/2" x 1/2"
1/2" x 1/2" x 1/2" x 1/2"
1/2" x 1/2" x 1/2" x 1/2"
1/2" x 1/2" x 1/2" x 1/2"
1/2" x 1/2" x 1/2" x 1/2"
1/2" x 1/2" x 1/2" x 1/2"
- W6**
Window Detail Ref.
1/2" x 1/2" x 1/2" x 1/2"
1/2" x 1/2" x 1/2" x 1/2"
1/2" x 1/2" x 1/2" x 1/2"
1/2" x 1/2" x 1/2" x 1/2"
1/2" x 1/2" x 1/2" x 1/2"
1/2" x 1/2" x 1/2" x 1/2"
1/2" x 1/2" x 1/2" x 1/2"
1/2" x 1/2" x 1/2" x 1/2"
1/2" x 1/2" x 1/2" x 1/2"
1/2" x 1/2" x 1/2" x 1/2"
1/2" x 1/2" x 1/2" x 1/2"
- S1**
Structural Detail Ref.
1/2" x 1/2" x 1/2" x 1/2"
1/2" x 1/2" x 1/2" x 1/2"
1/2" x 1/2" x 1/2" x 1/2"
1/2" x 1/2" x 1/2" x 1/2"
1/2" x 1/2" x 1/2" x 1/2"
1/2" x 1/2" x 1/2" x 1/2"
1/2" x 1/2" x 1/2" x 1/2"
1/2" x 1/2" x 1/2" x 1/2"
1/2" x 1/2" x 1/2" x 1/2"
1/2" x 1/2" x 1/2" x 1/2"
1/2" x 1/2" x 1/2" x 1/2"
- S2**
Structural Detail Ref.
1/2" x 1/2" x 1/2" x 1/2"
1/2" x 1/2" x 1/2" x 1/2"
1/2" x 1/2" x 1/2" x 1/2"
1/2" x 1/2" x 1/2" x 1/2"
1/2" x 1/2" x 1/2" x 1/2"
1/2" x 1/2" x 1/2" x 1/2"
1/2" x 1/2" x 1/2" x 1/2"
1/2" x 1/2" x 1/2" x 1/2"
1/2" x 1/2" x 1/2" x 1/2"
1/2" x 1/2" x 1/2" x 1/2"
1/2" x 1/2" x 1/2" x 1/2"
- S3**
Structural Detail Ref.
1/2" x 1/2" x 1/2" x 1/2"
1/2" x 1/2" x 1/2" x 1/2"
1/2" x 1/2" x 1/2" x 1/2"
1/2" x 1/2" x 1/2" x 1/2"
1/2" x 1/2" x 1/2" x 1/2"
1/2" x 1/2" x 1/2" x 1/2"
1/2" x 1/2" x 1/2" x 1/2"
1/2" x 1/2" x 1/2" x 1/2"
1/2" x 1/2" x 1/2" x 1/2"
1/2" x 1/2" x 1/2" x 1/2"
1/2" x 1/2" x 1/2" x 1/2"
- R1**
Roof Detail Ref.
1/2" x 1/2" x 1/2" x 1/2"
1/2" x 1/2" x 1/2" x 1/2"
1/2" x 1/2" x 1/2" x 1/2"
1/2" x 1/2" x 1/2" x 1/2"
1/2" x 1/2" x 1/2" x 1/2"
1/2" x 1/2" x 1/2" x 1/2"
1/2" x 1/2" x 1/2" x 1/2"
1/2" x 1/2" x 1/2" x 1/2"
1/2" x 1/2" x 1/2" x 1/2"
1/2" x 1/2" x 1/2" x 1/2"
1/2" x 1/2" x 1/2" x 1/2"

REVISION TABLE

NUMBER	DATE	REVISION BY	DESCRIPTION

3rd Floor Floorplan

Drawings Provided By:

Main Renovations

DATE:

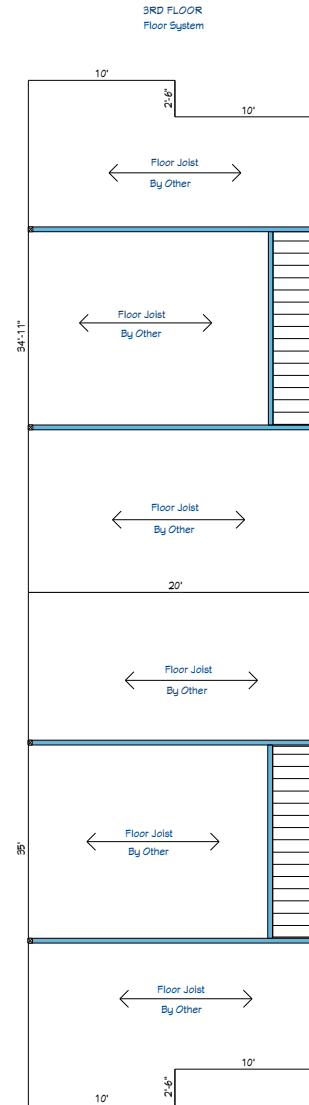
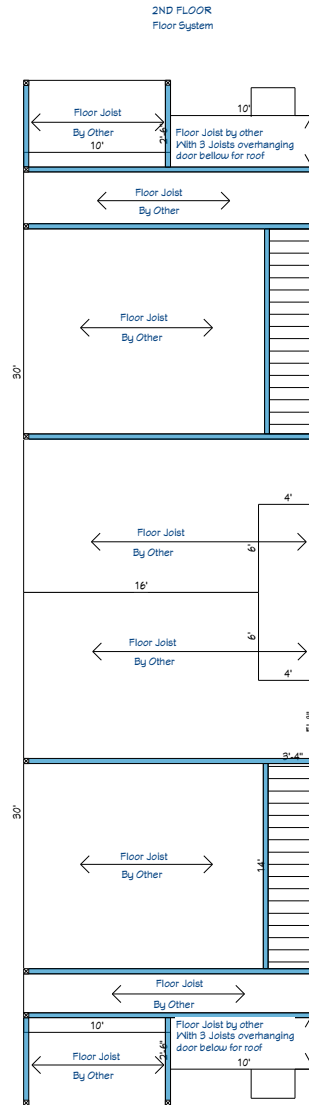
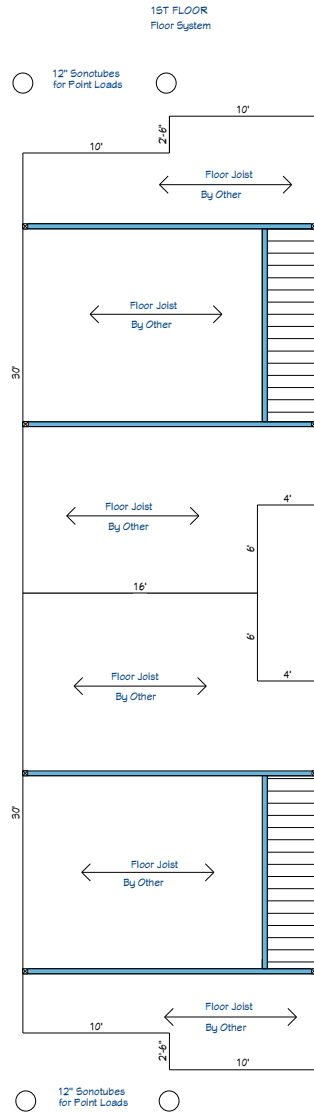
5/12/2022

SCALE:

SHEET:

P-11





All Blue represents "Beam by Floor Joist Provider"

POINT LOAD
Design: 500, 200
Dimension: 12" dia

REVISION TABLE	
NUMBER	DATE / DESCRIPTION

Proposed Floor
System Layout
(Open to Change)

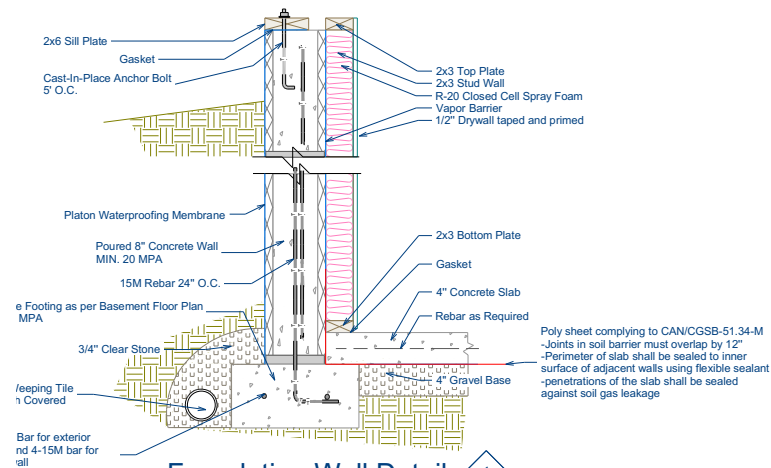
DRAWINGS PROVIDED BY:
Main Renovations

DATE:
5/12/2022

SCALE:

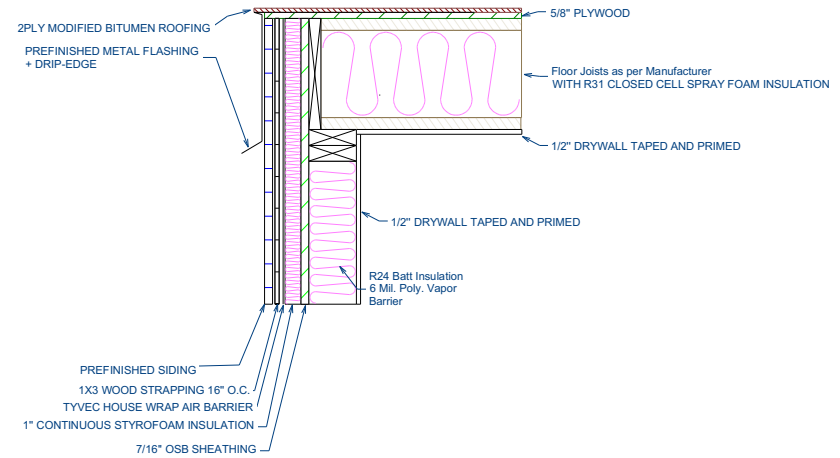
SHEET:

P-15



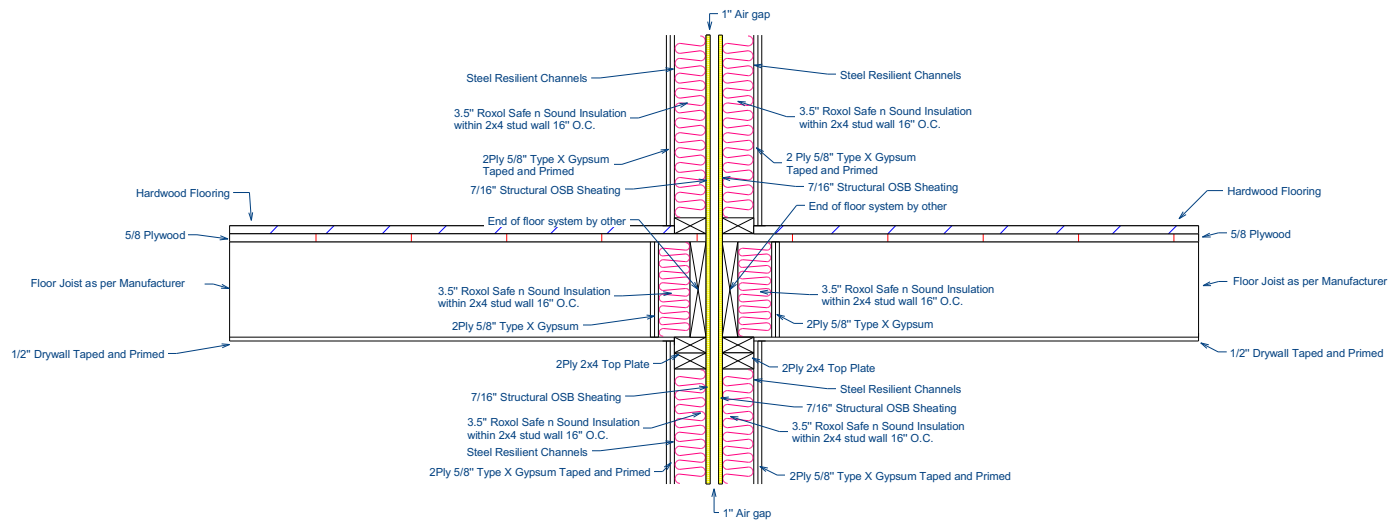
Foundation Wall Detail

1
P-16



Low Slope Roof Edge

2
P-16



**Fire Separation Wall
With Floor system Connection**

3
P-16

REVISION TABLE			
NUMBER	DATE	REVISED BY	DESCRIPTION

Construction Detail

Main Renovations

DRAWINGS PROVIDED BY:

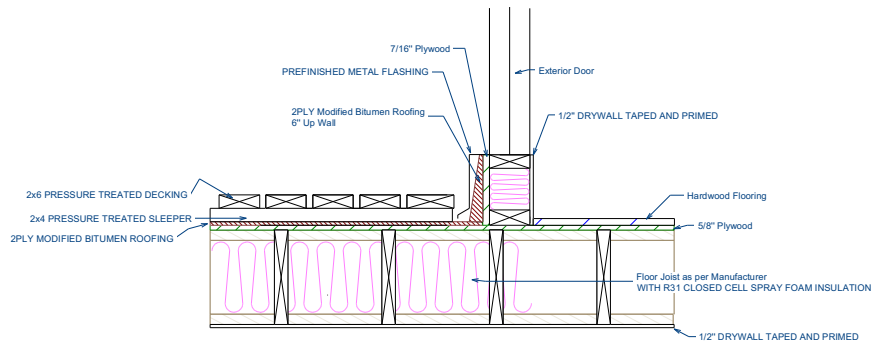
DATE:

5/12/2022

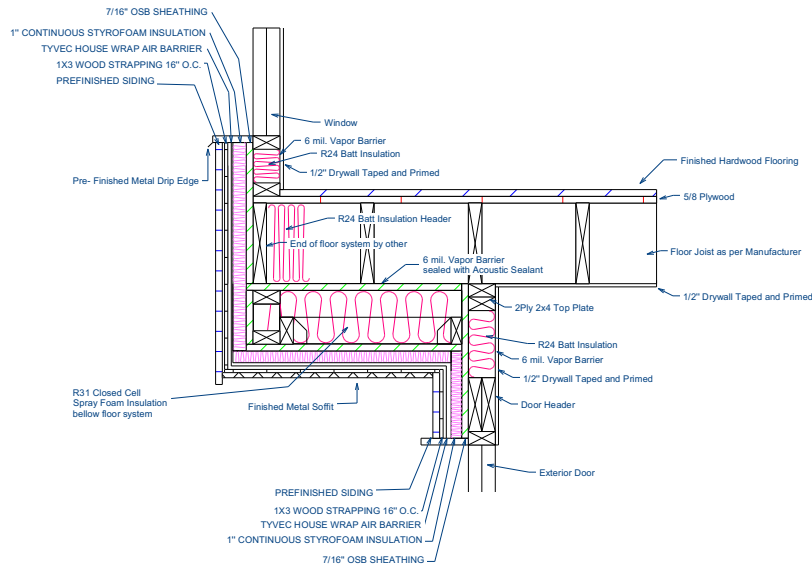
SCALE:

SHEET:

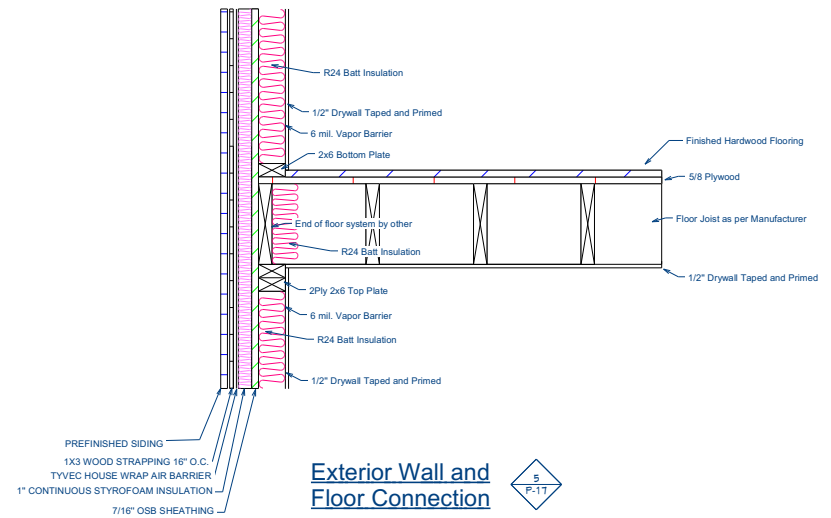
P-16



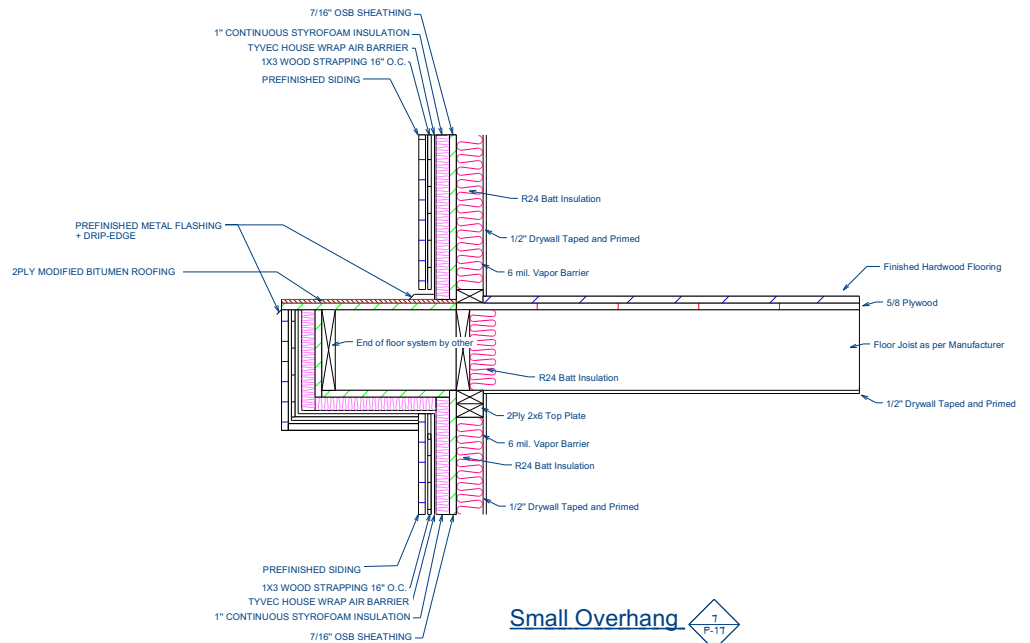
**Low Slope Roof Wall Connection
+With deck**



**Overhang Construction
with Window/Door**



**Exterior Wall and
Floor Connection**



Small Overhang



REVISION TABLE	NUMBER	DATE	REVISION BY	DESCRIPTION

Construction Detail

Main Renovations

DRAWINGS PROVIDED BY:

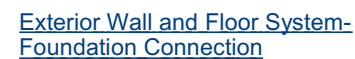
DATE:

5/12/2022

SCALE:

SHEET:

P-17



P-18

