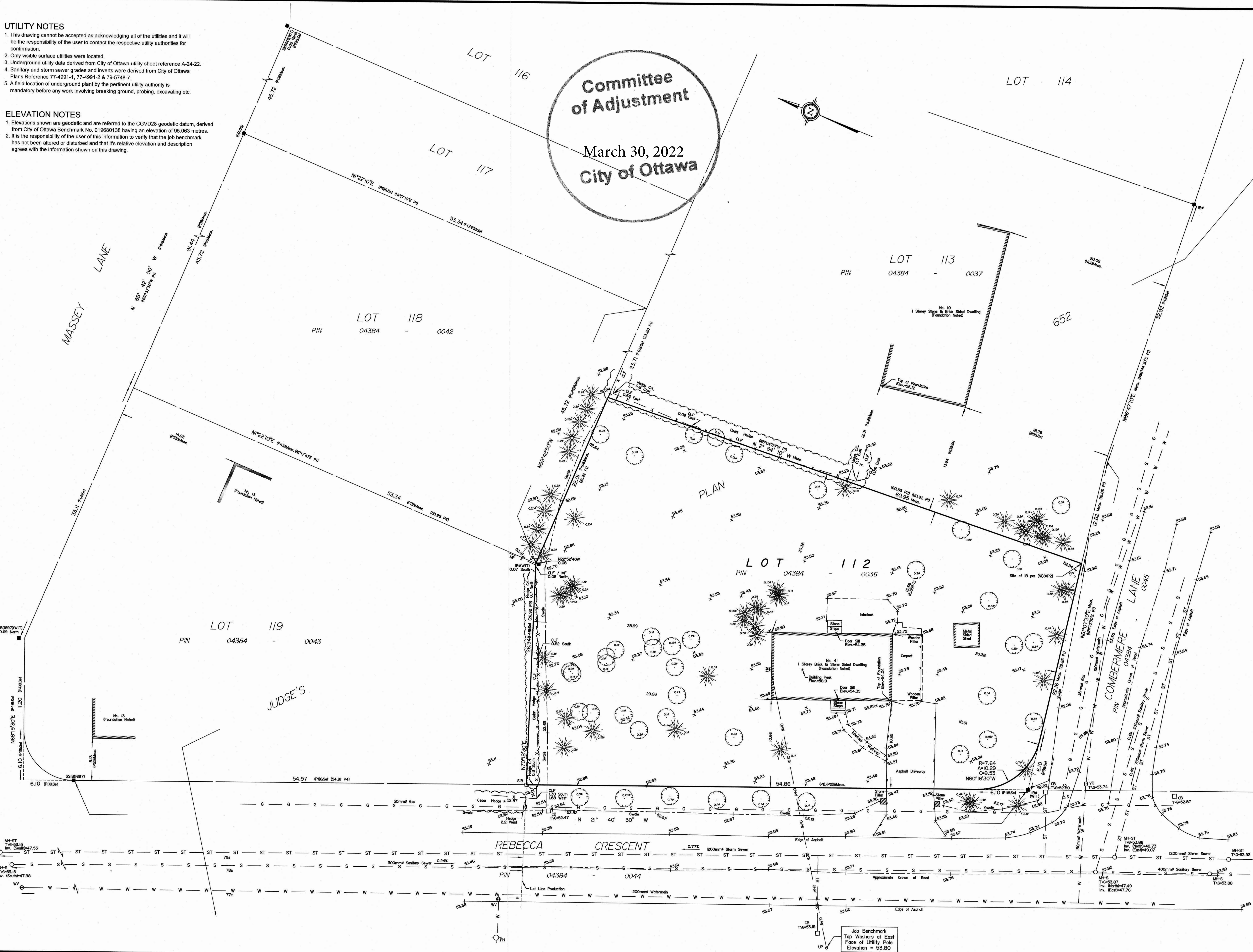


UTILITY NOTES

1. This drawing cannot be accepted as acknowledging all of the utilities and it will be the responsibility of the user to contact the respective utility authorities for confirmation.
2. Only visible surface utilities were located.
3. Underground utility data derived from City of Ottawa utility sheet reference A-24-22.
4. Sanitary and storm sewer grades and inverts were derived from City of Ottawa Plans Reference 77-4991-1, 77-4991-2 & 79-5748-7.
5. A field location of underground plant by the pertinent utility authority is mandatory before any work involving breaking ground, probing, excavating etc.

ELEVATION NOTES

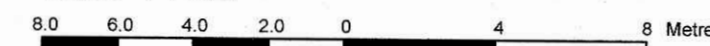
1. Elevations shown are geodetic and are referred to the CGVD28 geodetic datum, derived from City of Ottawa Benchmark No. 019680138 having an elevation of 95.063 metres.
2. It is the responsibility of the user of this information to verify that the job benchmark has not been altered or disturbed and that its relative elevation and description agrees with the information shown on this drawing.



SURVEYOR'S REAL PROPERTY REPORT

PART 1 Plan of
LOT 112
JUDGE'S PLAN 652
CITY OF OTTAWA
Surveyed by Annis, O'Sullivan, Vollebakk Ltd.

Scale 1 : 200



Metric

DISTANCES SHOWN ON THIS PLAN ARE IN METRES AND CAN BE CONVERTED TO FEET BY DIVIDING BY 0.3048

Surveyor's Certificate

- I CERTIFY THAT:
1. This survey and plan are correct and in accordance with the Surveys Act and the Surveyors Act and the regulations made under them.
 2. The survey was completed on the 21st day of December, 2021.

Date Dec 22, 2021

E. H. Herweyer
E. H. Herweyer
Ontario Land Surveyor

PART 2

THIS PLAN MUST BE READ IN CONJUNCTION WITH SURVEY REPORT DATED December 22, 2021

ANNIS, O'SULLIVAN, VOLLEBEKK LTD. grants to Casa Verde Construction Inc. ("The Client"), their solicitors, mortgagees, and other related parties, permission to use original, signed, sealed copies of the Surveyor's Real Property Report in transactions involving The Client.

Notes & Legend

Denotes	
—	Survey Monument Planted
—	Survey Monument Found
SIB	Standard Iron Bar
SSIB	Short Standard Iron Bar
IB	Iron Bar
IB#	Round Iron Bar
(WIT)	Witness
Meas.	Measured
(AOG)	Annis, O'Sullivan, Vollebakk Ltd.
(PI)	Registered Plan 652
(P2)	(725) Plan Dated July 3rd, 1980
(P3)	(AOG) Survey Dated March 18, 1981
(P4)	(1175) Plan dated July 30th 2009
(P5)	(1175) Plan dated November 25, 2009
(P6)	(AOG) Plan Dated April 28, 1995
(NI)	(AOG) Notes Dated March 16, 1981
○ MH-ST	Maintenance Hole (Storm Sewer)
○ MH-S	Maintenance Hole (Sanitary)
○ VC	Valve Chamber (Watermain)
— ST	Underground Storm Sewer
— S	Underground Sanitary Sewer
— W	Underground Water
— G	Underground Gas
— OHW	Overhead Wires
— TB	Unidentified Terminal Box
—	Deciduous Tree
—	Coniferous Tree
—	Diameter
—	Location of Elevations
—	Centreline
—	Chain Link Fence
—	Metal Fence
—	Catch Basin
—	Fire Hydrant
—	Water Valve
—	Water Stand Post
—	Hydro Meter
—	Utility Pole

Bearings are grid, derived from Can-Net 2016 Real Time Network GPS observations, MTM Zone 9 (76°30' West Longitude) NAD-83 (original).
For bearing comparisons, a rotation of 0°46'30" counter-clockwise was applied to bearings on P1, P2, P4 & P5. A rotation of 0°51'50" counter-clockwise was applied to bearings on P6.

ASSOCIATION OF ONTARIO
LAND SURVEYORS
PLAN SUBMISSION FORM
V-19619

THIS PLAN IS NOT VALID UNLESS
IT IS AN EMBOSSED ORIGINAL
COPY ISSUED BY THE SURVEYOR
In accordance with
Regulation 1028, Section 29 (3)

© Annis, O'Sullivan, Vollebakk Ltd. 2021. "THIS PLAN IS PROTECTED BY COPYRIGHT"
ANNIS, O'SULLIVAN, VOLLEBEKK LTD.
14 Concourse Gate, Suite 500
Nepean, Ont. K2E 7S6
Phone: (613) 727-0850 / Fax: (613) 727-1079
Email: Nepean@annis.com
Ontario Land Surveyors Job No. 22482-21 Casa Verde LUIS P652 SPFR F