

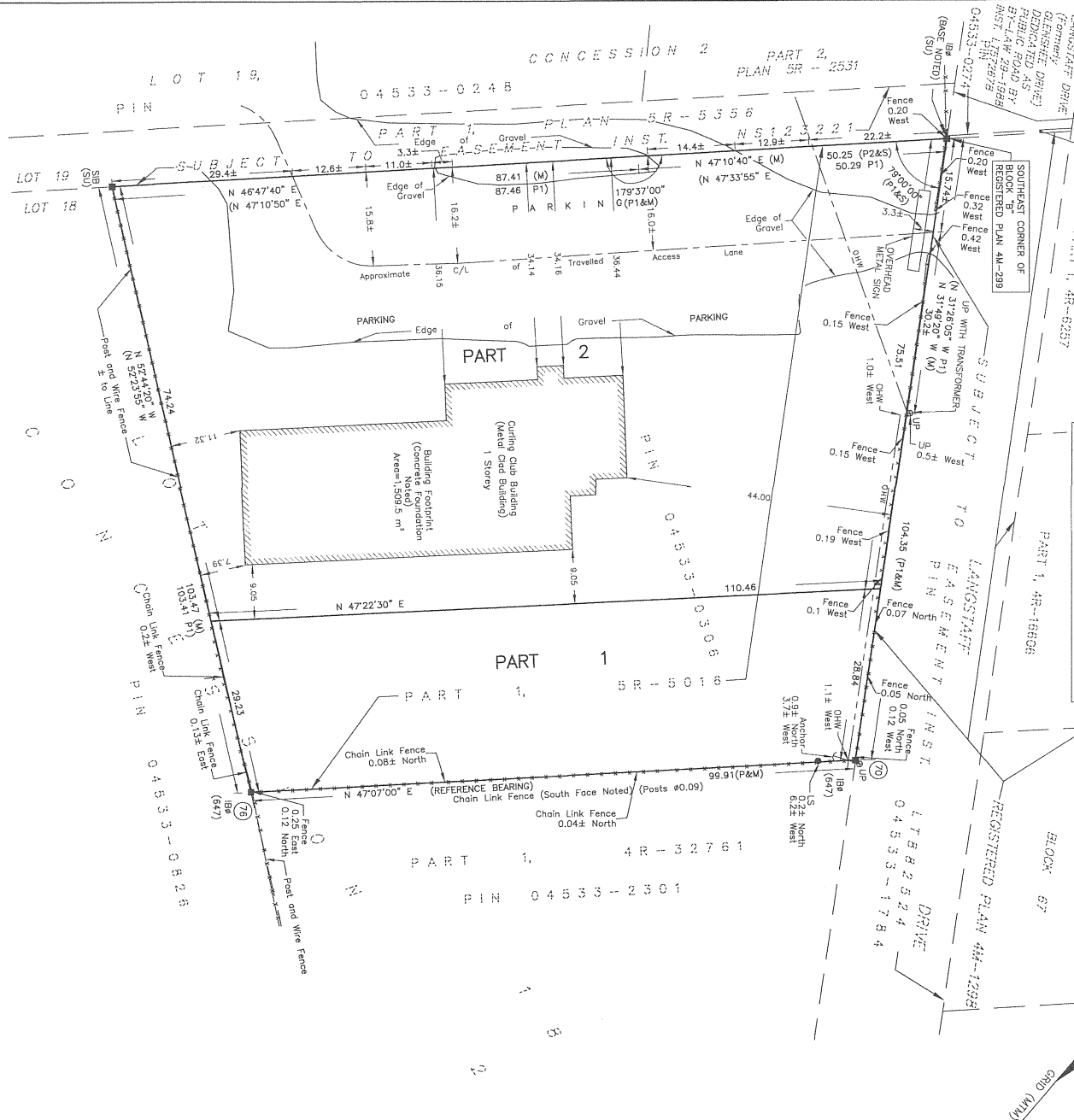
METRIC
DISTANCES AND COORDINATES SHOWN ON THIS PLAN ARE IN METRES
AND CAN BE CONVERTED TO FEET BY DIVIDING BY 0.3048

SCHEDULE				
LOT	WIDTH	AREA (SQ.M)	PART	LOT
28.36		3003	1	PART OF 18
74.09		9147	2	

CONCESSION	PIN
2	04533-0306

NOTE: LOT WIDTH AS SHOWN HAS BEEN CALCULATED
PER CITY OF OTTAWA ZONING-BY-LAW 2008-250 CONSOLIDATION
(PART 1, DEFINITIONS SEC. 54)

PLAN PREPARED FOR COMMITTEE
OF ADJUSTMENT PURPOSES
JULY 11, 2022



PLAN OF SURVEY OF
PART OF LOT 18, CONCESSION 2
GEOGRAPHIC TOWNSHIP OF HUNTLEY
CITY OF OTTAWA
FAIRHALL, MOFFATT & WOODLAND LIMITED
ONARIO LAND SURVEYORS

NOTES

1. BEARINGS ARE GRID AND ARE DERIVED FROM THE NORTHWESTERN LIMIT OF PART 1, PLAN 4R-32761 SHOWN AS HAVING A BEARING OF N 47°07'00" E AND ARE REFERRED TO THE CENTRAL MERIDIAN, 76°30' W LONGITUDE KTM ZONE 9, NAD83 ORIGINAL.
2. DISTANCES ARE GROUND AND CAN BE CONVERTED TO GRID BY MULTIPLYING BY THE COMBINED SCALE FACTOR 0.999905.
3. REDUCED LENGTH MONUMENTS SET DUE TO UNDERGROUND UTILITY HAZARDS.

COORDINATES WERE DERIVED FROM REAL TIME NETWORK OBSERVATIONS (SMARTNET) KTM ZONE 9, NAD83 ORIGINAL. COORDINATES HAVE BEEN DETERMINED TO AN URBAN ACCURACY IN ACCORDANCE WITH SECTION 14(2) OF OREG 216/10.			
POINT ID	NORTHING	EASTING	
70	5023246.47	341260.08	
75	5023178.49	341196.88	

COORDINATES CANNOT IN THEMSELVES BE USED TO RE-ESTABLISH CORNERS OR BOUNDARIES SHOWN ON THIS PLAN.

LEGEND

- - SURVEY MONUMENT SET
- - SURVEY MONUMENT FOUND
- ▬ - STANDARD IRON BAR
- ▬ - SHORT STANDARD IRON BAR
- ▬ - IRON BAR
- - ROUND
- (P) - PLAN 4R-32761
- (P1) - PLAN SR-5016
- (P2) - PLAN SR-5356
- (S) - SET
- (M) - MEASURED
- (687) - FAIRHALL, MOFFATT & WOODLAND LIMITED, O.L.S.
- (647) - H. R. FARLEY, O.L.S.
- (SU) - SOURCE UNKNOWN
- (PIN) - PROPERTY IDENTIFIER NUMBER
- (WT) - WITNESS
- (-) - GUY WIRE AND ANCHOR
- - LAMP STANDARD
- - OVERHEAD WIRES
- C/L - CENTRE LINE

SURVEYOR'S CERTIFICATE

1. I CERTIFY THAT:
1. THIS SURVEY AND PLAN ARE CORRECT AND IN ACCORDANCE WITH THE SURVEY ACT, THE SURVEYORS ACT AND THE REGULATIONS MADE UNDER THEM.
2. THE SURVEY WAS COMPLETED ON

JUL 11/2022

D. S. MOFFATT

Fairhall
Moffatt &
Woodland



Surveying and Land Information Services
100-400 TERRY FOX DRIVE, KANATA, ONTARIO K2L 4K6
TEL: (613) 591-2800 FAX: (613) 591-1493
www.fairhallmoffatt.com

Committee of Adjustment
JUL 13 2022
City of Ottawa