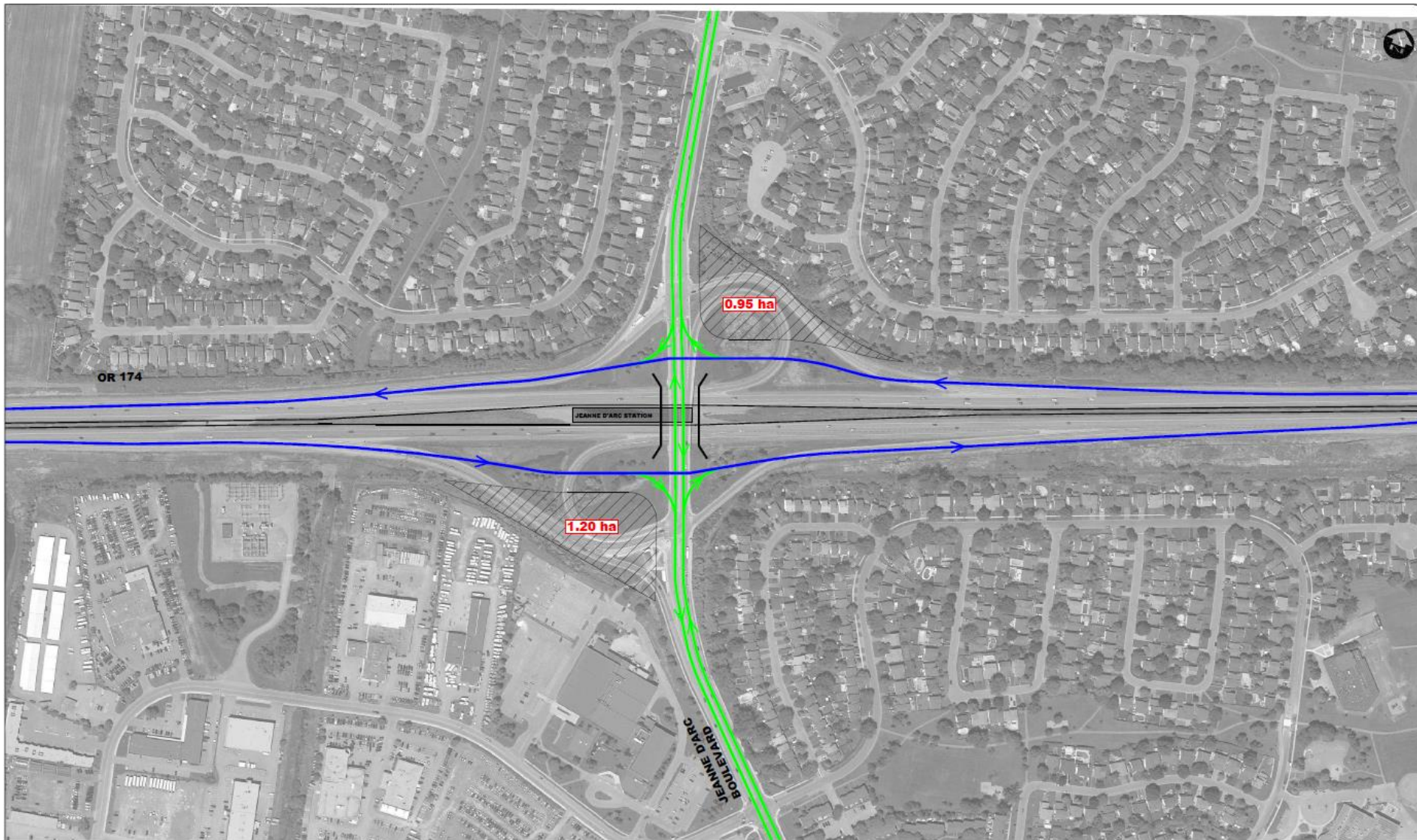


Annex A: Ottawa 174 – Alternative Interchange Concepts and High-Level Evaluation (October 2019) Dillon Consulting

In 2019 the City sponsored a high-level study to review, develop, analyze and document alternative urban interchange concepts in Orléans based on their potential to free lands currently taken up by suburban interchanges near the O-Train Stations in Orléans for development. This study, which was prepared prior to commencement of the Orléans Corridor Secondary Plan project and construction of the new O-Train line, was prepared by Dillon Consulting. The results demonstrate that a Tight Urban Diamond Interchange (TUDI) may be desirable in the future to create developable land.

City staff do not recommend full adoption of these concepts. For instance, due to realignments Trim station is no longer valid, but it is recommended that these options be evaluated and considered further in the future.



- | | |
|--|--|
|  PROPOSED LRT ALIGNMENT |  ADDITIONAL DEVELOPABLE LANDS |
|  CROSS-ROAD |  REMOVAL |
|  OR 174 | |
|  S/PUI LEFT TURNS | |

JEANNE D'ARC BOULEVARD (TUDI # 1)

SCALE 1:3500

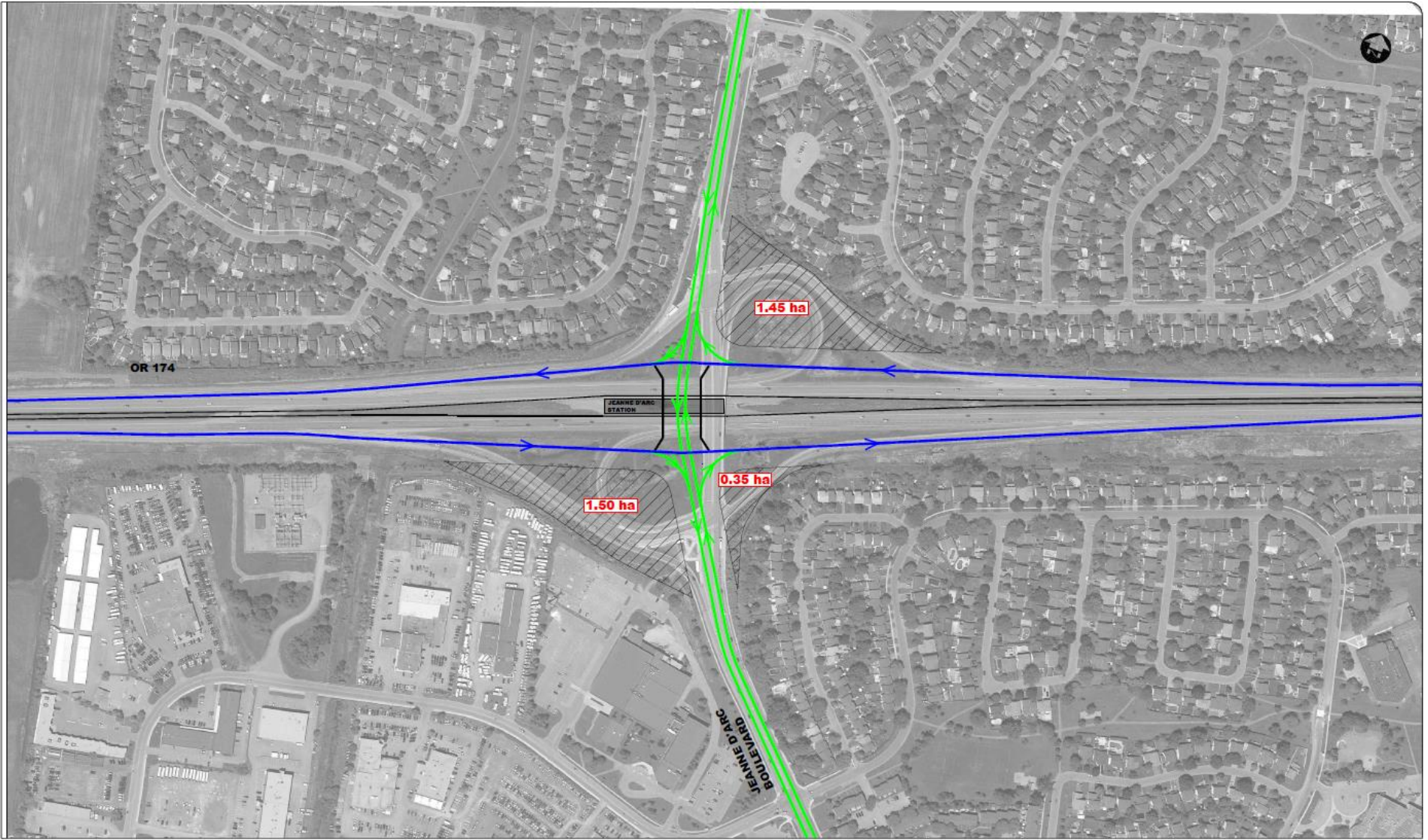


DATE	DESCRIPTION

CITY OF OTTAWA
ON 174 HIGHWAY INTERCHANGES
CONCEPTUAL DESIGN



SHEET: 9



- | | |
|--|--|
|  PROPOSED LRT ALIGNMENT |  ADDITIONAL DEVELOPABLE LANDS |
|  CROSS-ROAD |  REMOVAL |
|  OR 174 | |
|  S/PUI LEFT TURNS | |

JEANNE D'ARC BOULEVARD (TUDI #2)

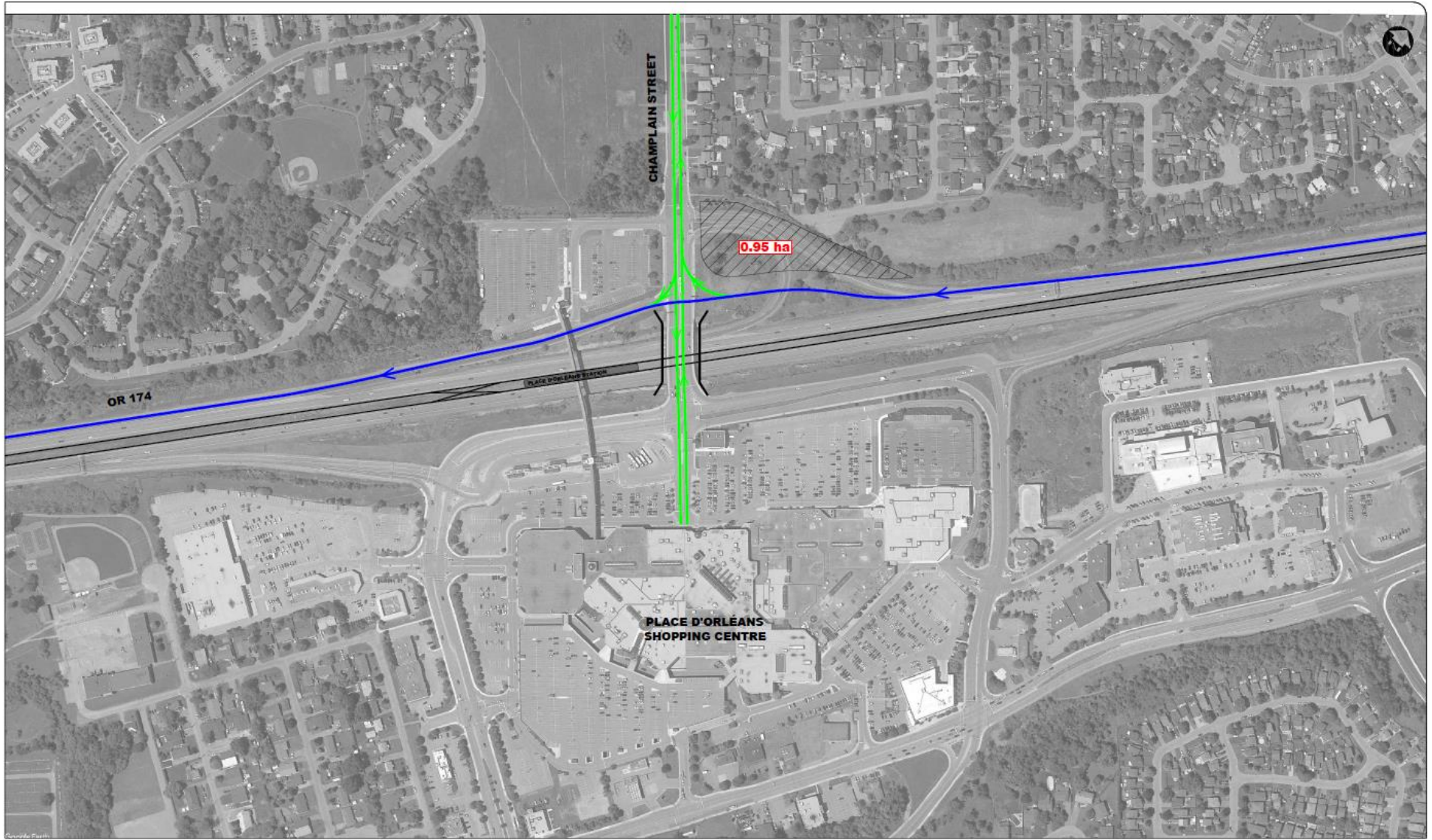
SCALE 1:3500



CITY OF OTTAWA
ON 174 HIGHWAY INTERCHANGES
CONCEPTUAL DESIGN

SHEET: 10





- PROPOSED LRT ALIGNMENT
- CROSS-ROAD
- OR 174
- SPLIT LEFT TURNS
- ADDITIONAL DEVELOPABLE LANDS
- REMOVAL

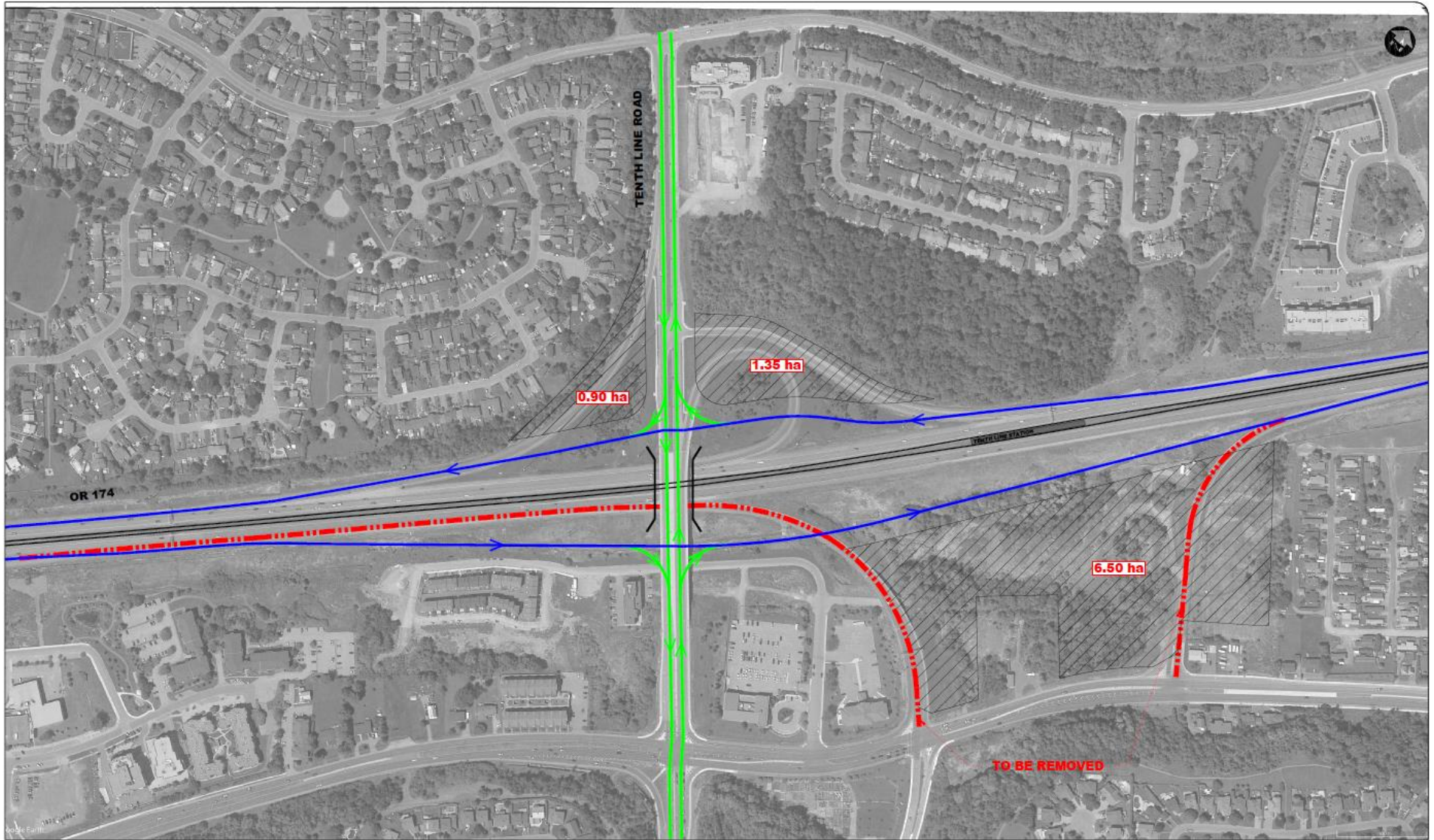
PLACE D'ORLÉANS / CHAMPLAIN STREET (TUDI)

SCALE 1:3500



CITY OF OTTAWA
ON 174 HIGHWAY INTERCHANGES
CONCEPTUAL DESIGN

SHEET: 13



- | | | | |
|--|------------------------|--|------------------------------|
| | PROPOSED LRT ALIGNMENT | | ADDITIONAL DEVELOPABLE LANDS |
| | CROSS-ROAD | | REMOVAL |
| | OR 174 | | |
| | SPI LEFT TURNS | | |

TENTH LINE ROAD (TUDI #1)

SCALE 1:3500

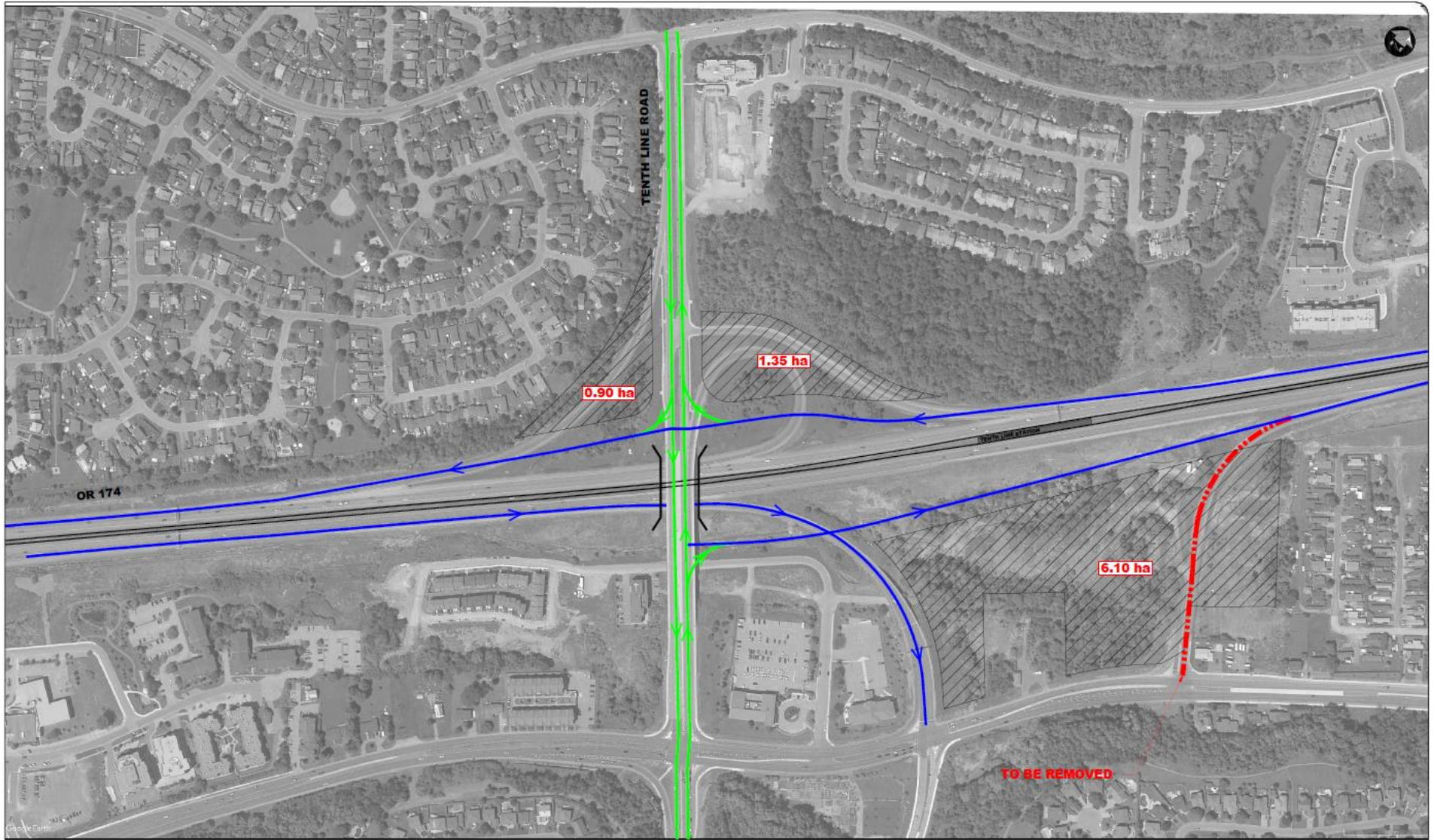


DATE	DESCRIPTION

CITY OF OTTAWA
ON 174 HIGHWAY INTERCHANGES
CONCEPTUAL DESIGN



SHEET: 16



- | | | | |
|--|------------------------|--|------------------------------|
| | PROPOSED LRT ALIGNMENT | | ADDITIONAL DEVELOPABLE LANDS |
| | CROSS-ROAD | | REMOVAL |
| | OR 174 | | |
| | SPUI LEFT TURNS | | |

TENTH LINE ROAD (TUDI #2)

SCALE 1:2500



DATE	DESCRIPTION

CITY OF OTTAWA
ON 174 HIGHWAY INTERCHANGES
CONCEPTUAL DESIGN



SHEET: 17