

Kreuser Minor Variance Sketch

270 Lowe Road
 Pt. Lot 2, Concession 11
 Geographic Township of Huntley
 City of Ottawa

Key Map

N.T.S.



Legend

- Subject Lands
- Non-Evaluated Wetlands
- Proposed Coach House
- Existing Barn
- MVCA Regulation Limit
- MDS Setback
- Well

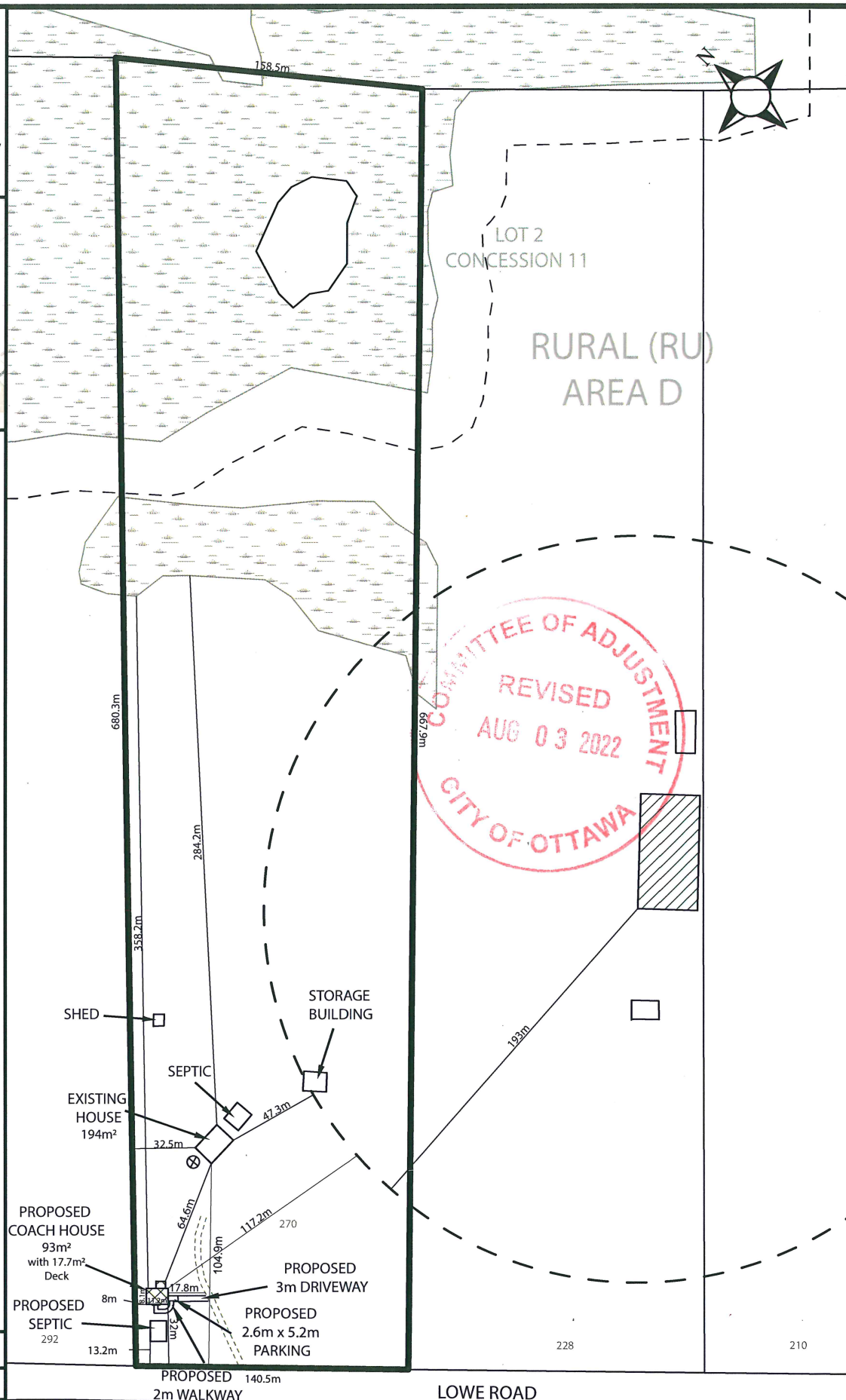
Notes

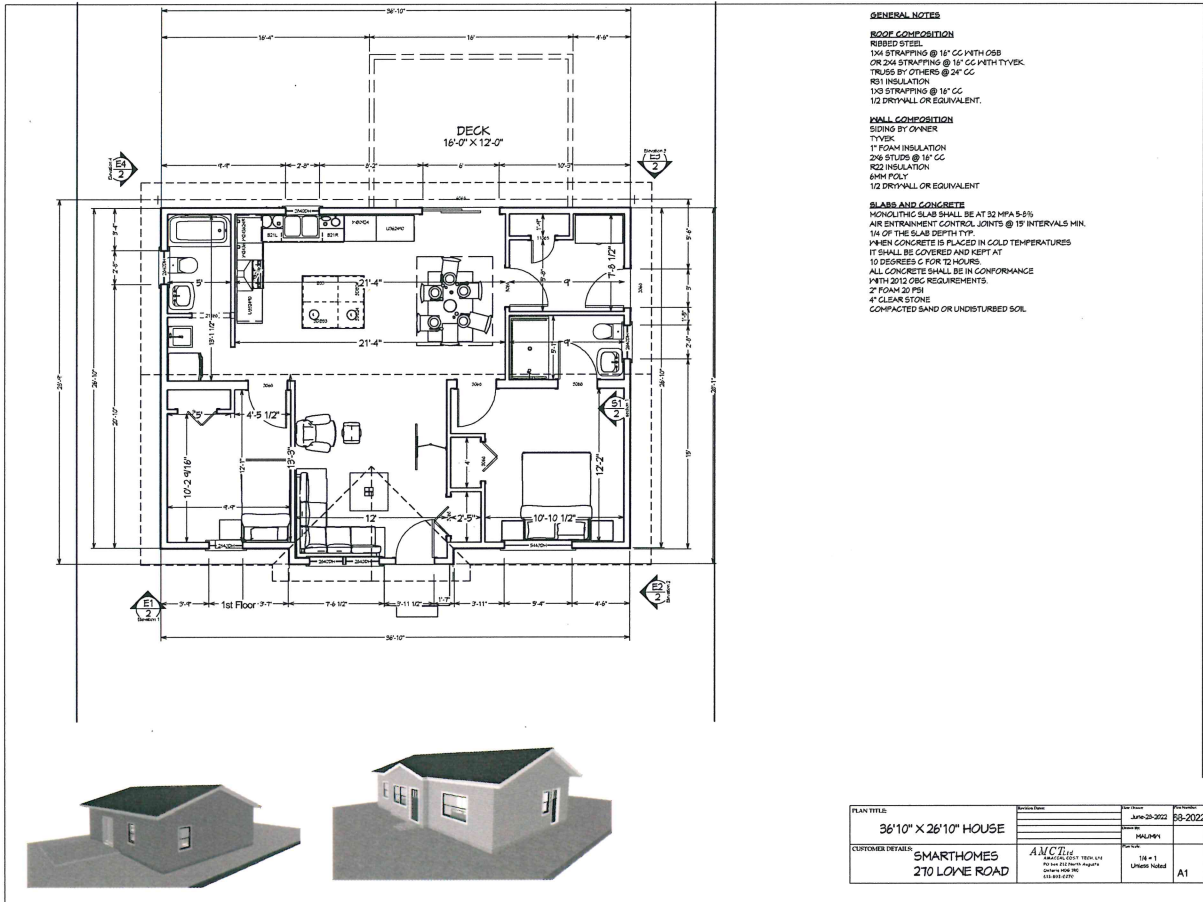
1. Location of the Wetlands and Regulation Limit derived from the MVCA Online GIS mapping. Their locations on the sketch are approximate.
2. Boundary and property lines are derived from online GIS mapping and are approximate.
3. MDS Setbacks were prepared for 228 Lowe Road on March 10, 2022 by by MacKenzie Van Horn.

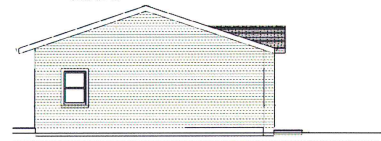
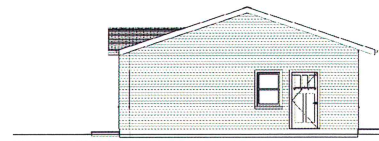
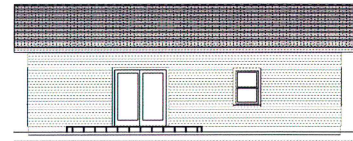
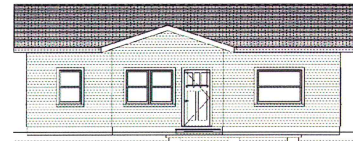
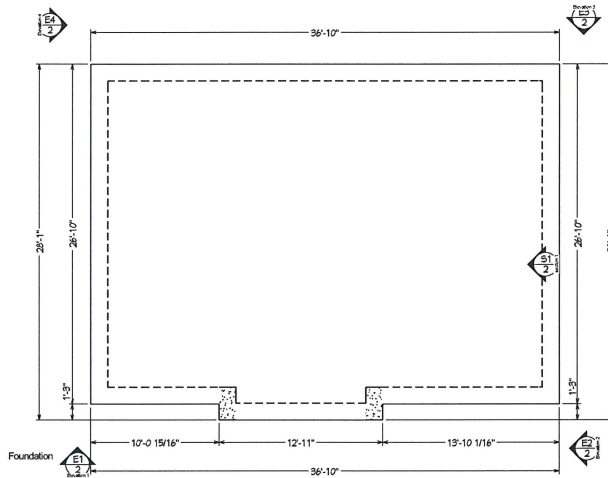
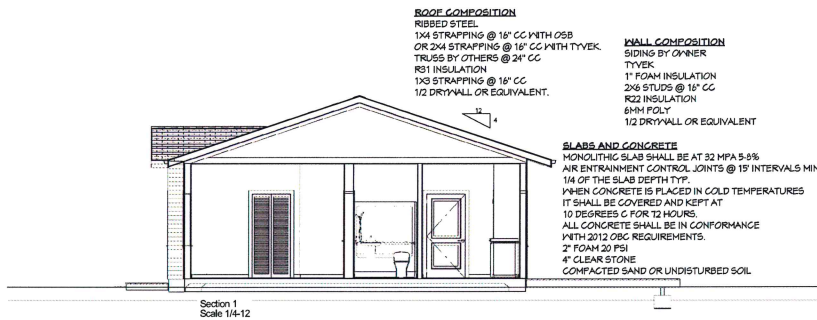
Version Date: August 2, 2022

File No. 21-245

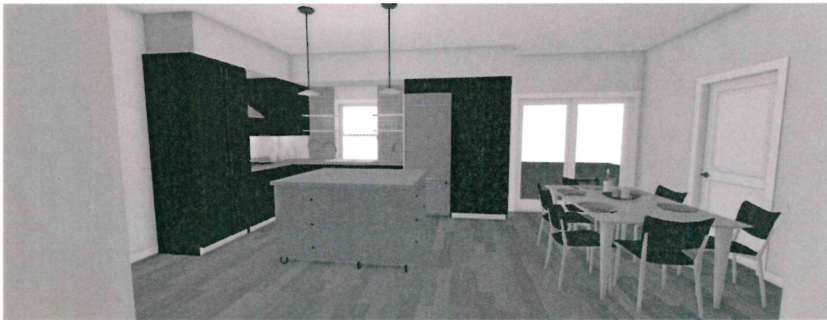
Drawn By: TG







PLAN TITLE:	36'10" X 26'10" HOUSE	DATE:	JUNE 28, 2022	PROJECT:	38-2022
CUSTOMER DETAILS:	SMARTHOMES 2710 LONE ROAD	ARCHITECT:	AMC DESIGN 1000 10TH AVE SUITE 100 VANCOUVER, BC V6H 2G9	SCALE:	1/8" = 1'
				UNITS:	IMPERIAL
					S1



PLAN TITLE	Revision		Issue	Rev
	36'10" X 26'10" HOUSE		June-20-2022	00-2022
CUSTOMER DETAILS	SMARTHOMES		210 LONE ROAD	
	AMCETM		100 m 1	
		For more information, please contact:	100 m 1	
		AMCETM	100 m 1	
		100 m 1	100 m 1	