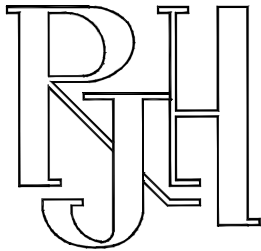
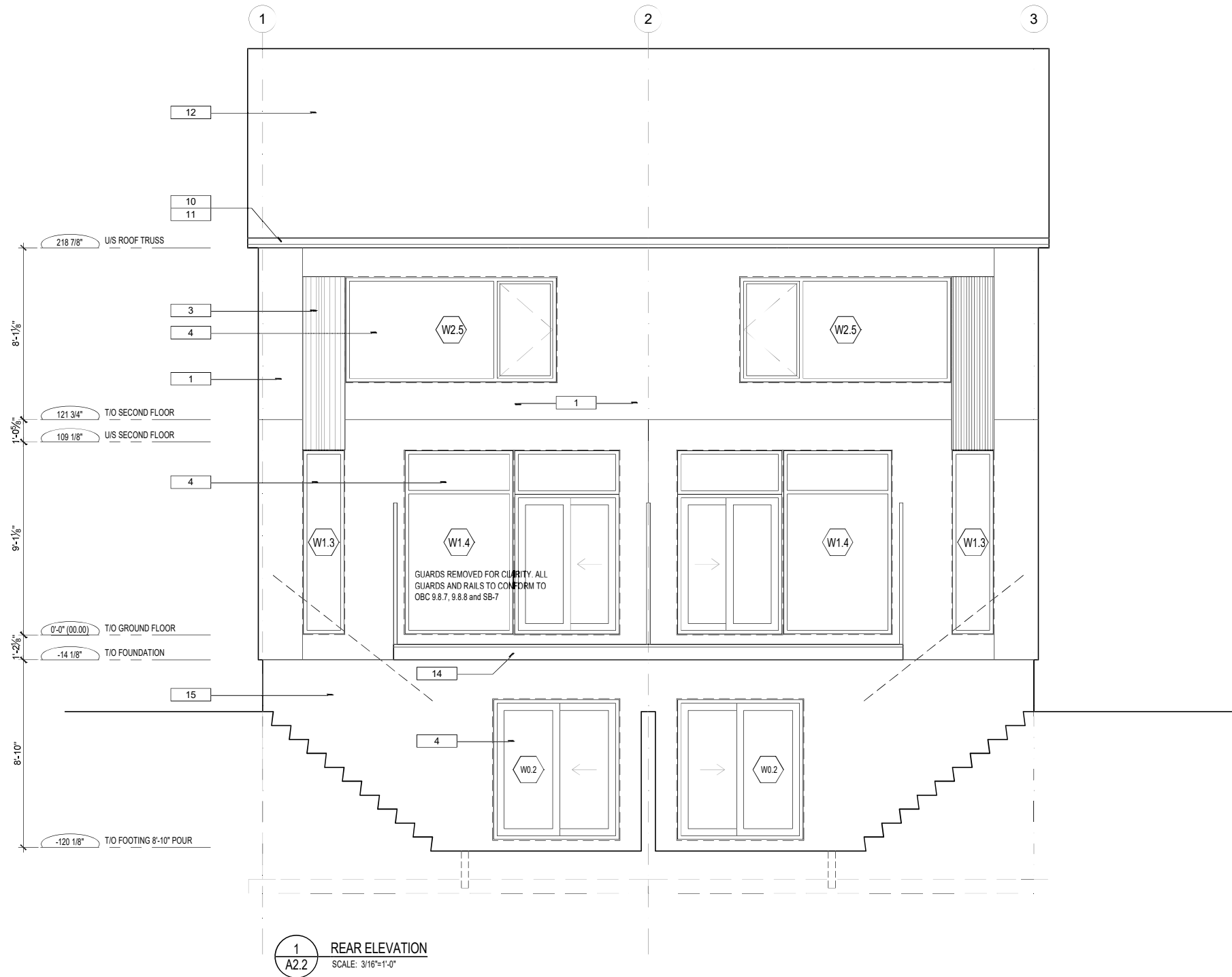


Drawing name: C:\Users\Marshall\Desktop\Work From Home\Marsh 160205 Edison\2025 AutoCAD\2025 ELEV\A2.2-REAR ELEV.dwg

KEY TO MATERIALS							
1	EIFS: 2" CMC APPROVED DRAINAGE SYSTEM COLOUR: WHITE X-203-1E TEXTURE: QUARTEX	4	ALUMINUM CLAD VINYL WINDOWS COLOUR: BLACK	8	NEWTECH COMPOSITE SOFFIT PROFILE: US31 COLOUR: RED CEDAR (REVIEW SAMPLES WITH RJH PRIOR TO ORDERING MATERIAL)	13	ALUMINUM EAVESTOUGH c/w 4" ROUND DOWNSPOUT COLOUR: BLACK
2	HARDIE PANEL SIDING TEXTURE: SMOOTH COLOUR: MIDNIGHT BLACK c/w COLOUR MATCHED FRY REGLET EASY TRIM	5	INSULATED WOOD-LOOK FIBERGLASS DOOR. COLOUR TO MATCH COMPOSITE WOOD SIDING. BLACK FRAME AND SIDELIGHT.	9	PREFINISHED 22ga ALUMINUM FLASHING COLOUR: BLACK	14	WOOD DECK AND GUARDS PER SB-7
3	NEWTECH COMPOSITE SIDING PROFILE: UH58 COLOUR: RED CEDAR (REVIEW SAMPLES WITH RJH PRIOR TO OREDRING MATERIAL)	6	SECTIONAL STEEL GARAGE DOOR COLOUR: BLACK	10	PREFINISHED 22ga ALUMINUM FASCIA COLOUR: BLACK PROFILE: DB, FASCIA 1x4 ON 2x8	15	CEMENT PARGING
		7	PREFINISHED 22ga ALUMINUM FASCIA COLOUR: BLACK PROFILE: SEE CANOPY DETAILS	11	VENTED ALUMINUM SOFFIT COLOUR: BLACK		
				12	TIMBERLINE HDZ ASPHALT SHINGLES COLOUR: CHARCOAL		



414 Churchill Ave. N. Ottawa,  
ON K1Z 5C6 • 613-853-2822  
www.rjhil.ca • rosaline@rjhil.ca

Rosaline J. Hill Architect Inc.

2.	2022-07-18	ISSUED FOR BUILDING PERMIT
1.	2022-05-27	ISSUED FOR STRUCTURAL COORDINATION AND JOIST LAYOUTS
No.	Y / M / D	REVISION

Consultants:

It is the responsibility of the appropriate contractor to check & verify all dimensions on site and report all errors &/or omissions to the architect. All contractors must comply with all pertinent codes & by-laws, & use proprietary products as directed by the manufacturer. Do not scale drawings. Copyright reserved.

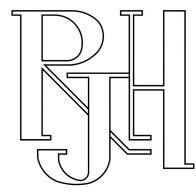


EDISON SEMI  
574 EDISON, OTTAWA ON

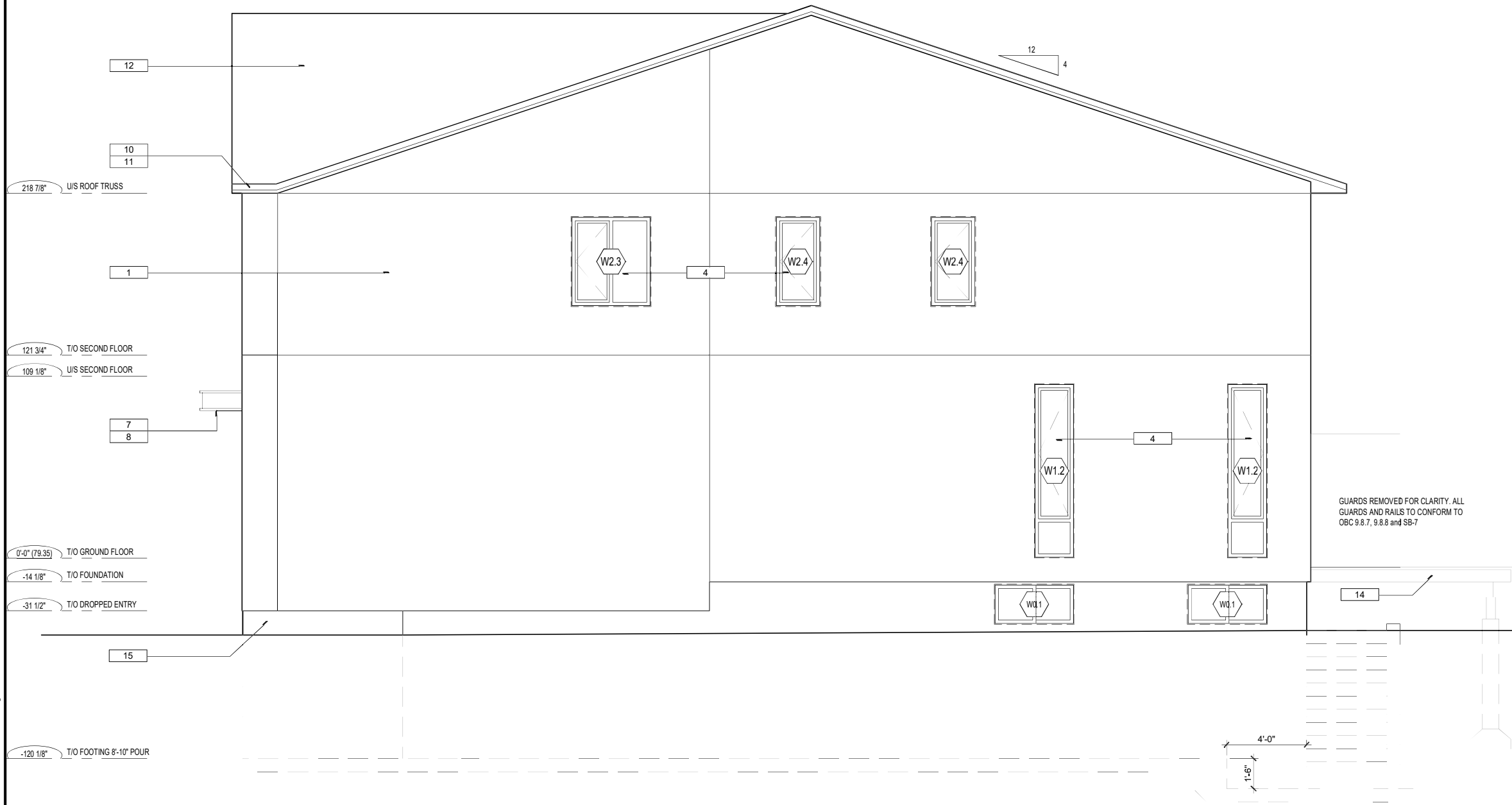
REAR ELEVATION

Drawn By:	Date:
XX	MAY 2022
Project No:	Scale:
2205	1/4" = 1'-0"

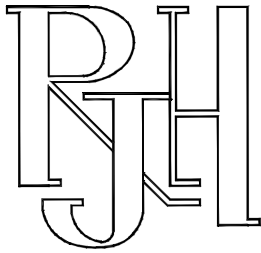
A2.2



KEY TO MATERIALS							
1	EIFS: 2" CCMC APPROVED DRAINAGE SYSTEM COLOUR: WHITE X-203-1E TEXTURE: QUARTEX	4	ALUMINUM CLAD VINYL WINDOWS COLOUR: BLACK	8	NEWTECH COMPOSITE SOFFIT PROFILE: US31 COLOUR: RED CEDAR (REVIEW SAMPLES WITH R/JH PRIOR TO ORDERING MATERIAL)	13	ALUMINUM EAVESTOUGH c/w 4" ROUND DOWNSPOUT COLOUR: BLACK
2	HARDIE PANEL SIDING TEXTURE: SMOOTH COLOUR: MIDNIGHT BLACK c/w COLOUR MATCHED FRY REGLET EASY TRIM	5	INSULATED WOOD-LOOK FIBERGLASS DOOR. COLOUR TO MATCH COMPOSITE WOOD SIDING. BLACK FRAME AND SIDELIGHT.	9	PREFINISHED 22ga ALUMINUM FLASHING COLOUR: BLACK	14	WOOD DECK AND GUARDS PER SB-7
3	NEWTECH COMPOSITE SIDING PROFILE: UH58 COLOUR: RED CEDAR (REVIEW SAMPLES WITH R/JH PRIOR TO OREDRING MATERIAL)	6	SECTIONAL STEEL GARAGE DOOR COLOUR: BLACK	10	PREFINISHED 22ga ALUMINUM FASCIA COLOUR: BLACK PROFILE: DB, FASCIA 1x4 ON 2x8	15	CEMENT PARGING
		7	PREFINISHED 22ga ALUMINUM FASCIA COLOUR: BLACK PROFILE: SEE CANOPY DETAILS	11	VENTED ALUMINUM SOFFIT COLOUR: BLACK		
				12	TIMBERLINE HDZ ASPHALT SHINGLES COLOUR: CHARCOAL		



1 RIGHT ELEVATION  
A2.3 SCALE: 1/4"=1'-0"



414 Churchill Ave. N. Ottawa,  
ON K1Z 5C6 • 613-853-2822  
www.rjhill.ca • rosaline@rjhill.ca

Rosaline J. Hill Architect Inc.

2.	2022-07-18	ISSUED FOR BUILDING PERMIT
1.	2022-05-27	ISSUED FOR STRUCTURAL COORDINATION AND JOIST LAYOUTS
No.	Y / M / D	REVISION

Consultants:

It is the responsibility of the appropriate contractor to check & verify all dimensions on site and report all errors &/or omissions to the architect. All contractors must comply with all pertinent codes & by-laws, & use proprietary products as directed by the manufacturer. Do not scale drawings. Copyright reserved.

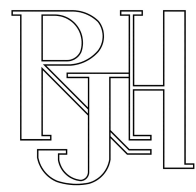


EDISON SEMI  
574 EDISON, OTTAWA ON

RIGHT SIDE ELEVATION

Drawn By: XX	Date: MAY 2022
Project No: 2205	Scale: 1/4" = 1'-0"

A2.3

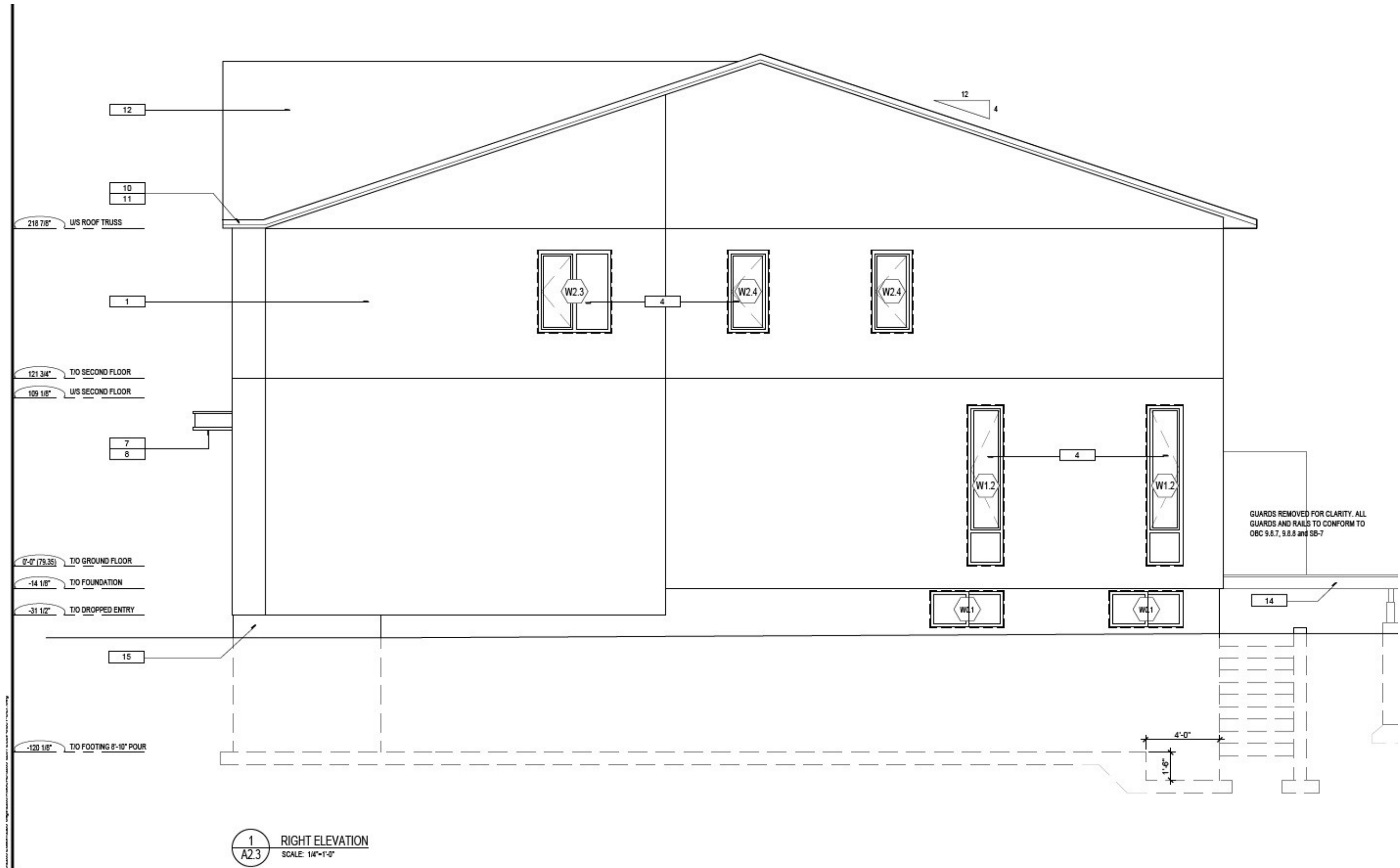


Rosaline J. Hill Architect Inc.

Architect • Development Consultant  
414 Churchill Ave. N, Ottawa, ON, K1Z 5C6  
613-853-2822 www.rjhill.ca

*designing urban alternatives*

Zoomed



**RJH**

2.	2022-07-18	ISSUED FOR BUILDING PERMIT
1.	2022-05-27	ISSUED FOR STRUCTURAL COORDINATION AND JOIST LAYOUTS
No.	Y / M / D	REVISION

It is the responsibility of the appropriate contractor to check & verify all dimensions on site and report all errors &/or omissions to the architect. All contractors must comply with all pertinent codes & by-laws, & use proprietary products as directed by the manufacturer. Do not scale drawings. Copyright reserved.



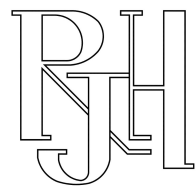
RIGHT SIDE ELEVATION

Drawn By: XX	Date: MAY 2022
Project No: 2205	Scale: 1/4" = 1'-0"

A2.4

PLOTTERD Mon 18-Jul-2022



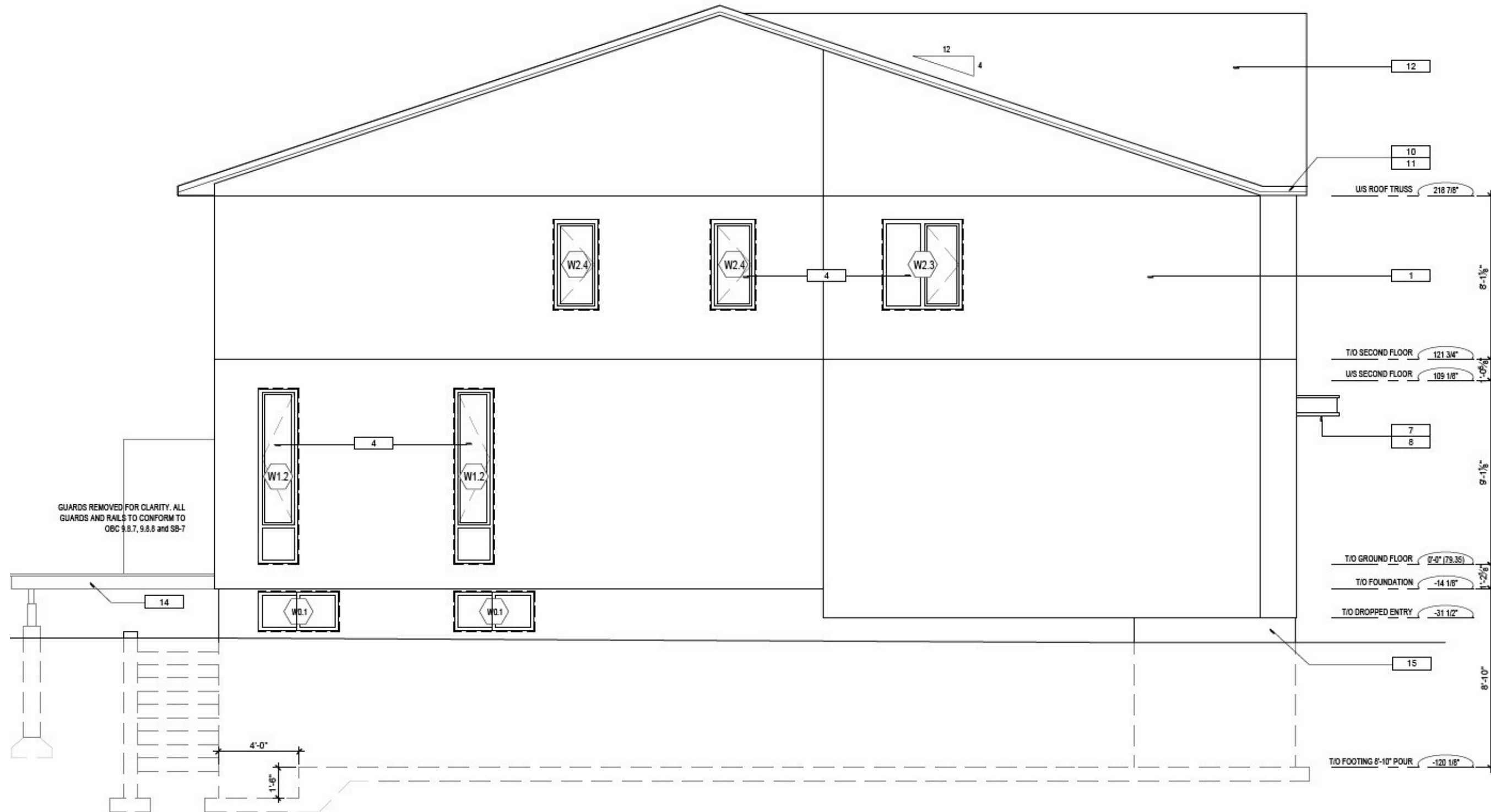


Rosaline J. Hill Architect Inc.

Architect • Development Consultant  
414 Churchill Ave. N, Ottawa, ON, K1Z 5C6  
613-853-2822 www.rjhill.ca

*designing urban alternatives*

Zoomed



1  
A2.4 LEFT ELEVATION  
SCALE: 1/4"=1'-0"