

# Document 1 – Pedestrian Crossovers (PXO)

## TYPE A PXO:

Type A treatments are typically located on high to medium volume, higher speed, single or multi lane arterials. They typically consist of side-mounted poles with crossing signs, as well as overhead signs with flashing beacons suspended on a wire spanning the two roadside poles.

Important Note: The PXO Type A was identified in the *Highway Traffic Act* (HTA) prior to 2015. However, it has not been in use since the mid 1990's in Ottawa at the direction of Regional and Local Councils and has not been implemented as part of this pilot.

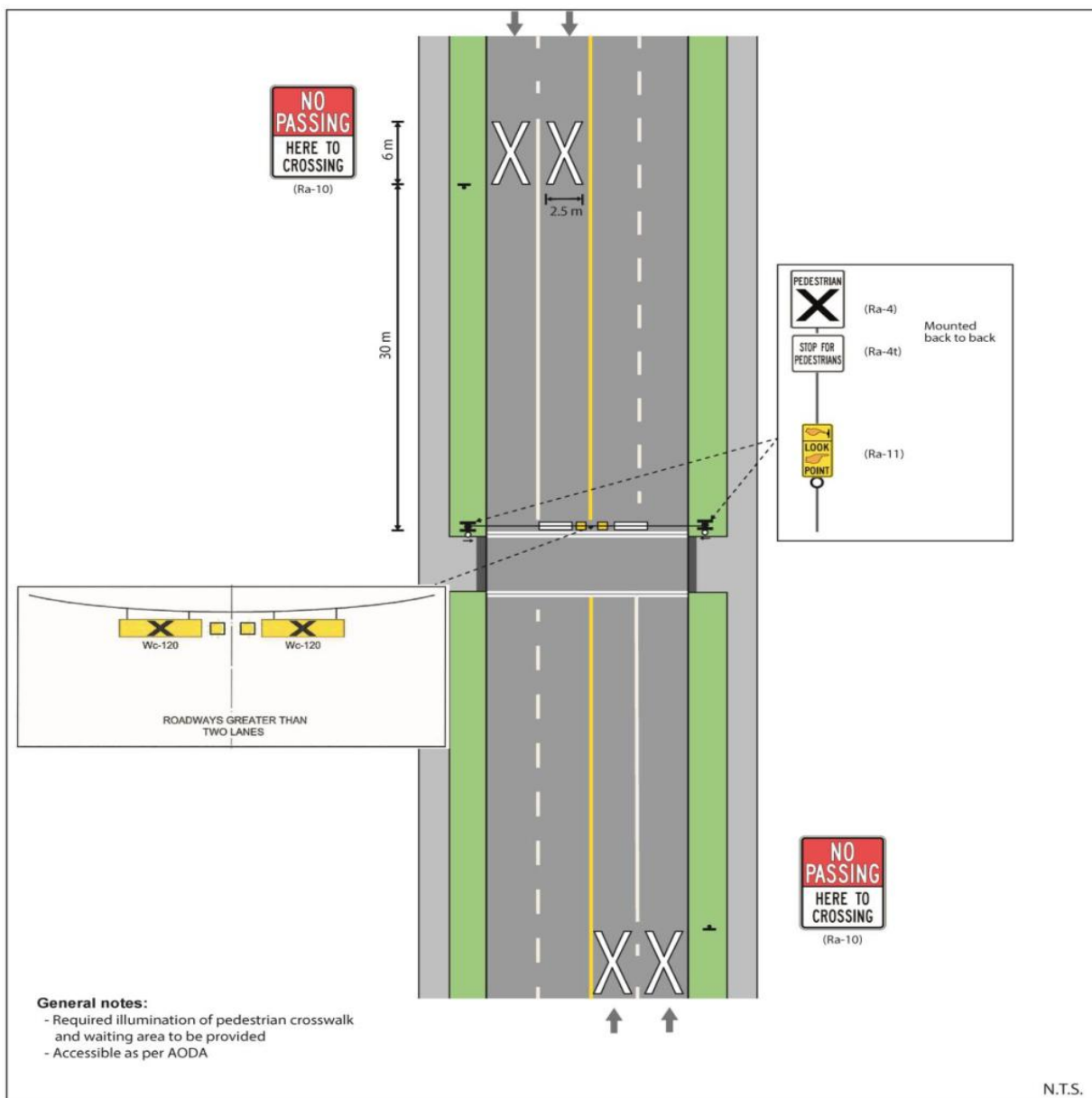


Figure 1 - Type A PXO

## TYPE B PXO:

Type B treatments are typically located on medium volume, medium speed, and single or multi lane roadways such as major collectors, arterials and high volume multi lane roundabouts. They typically consist of roadside mounted signs with overhead signs and rapid flashing beacons on top of the roadside mounted signs.

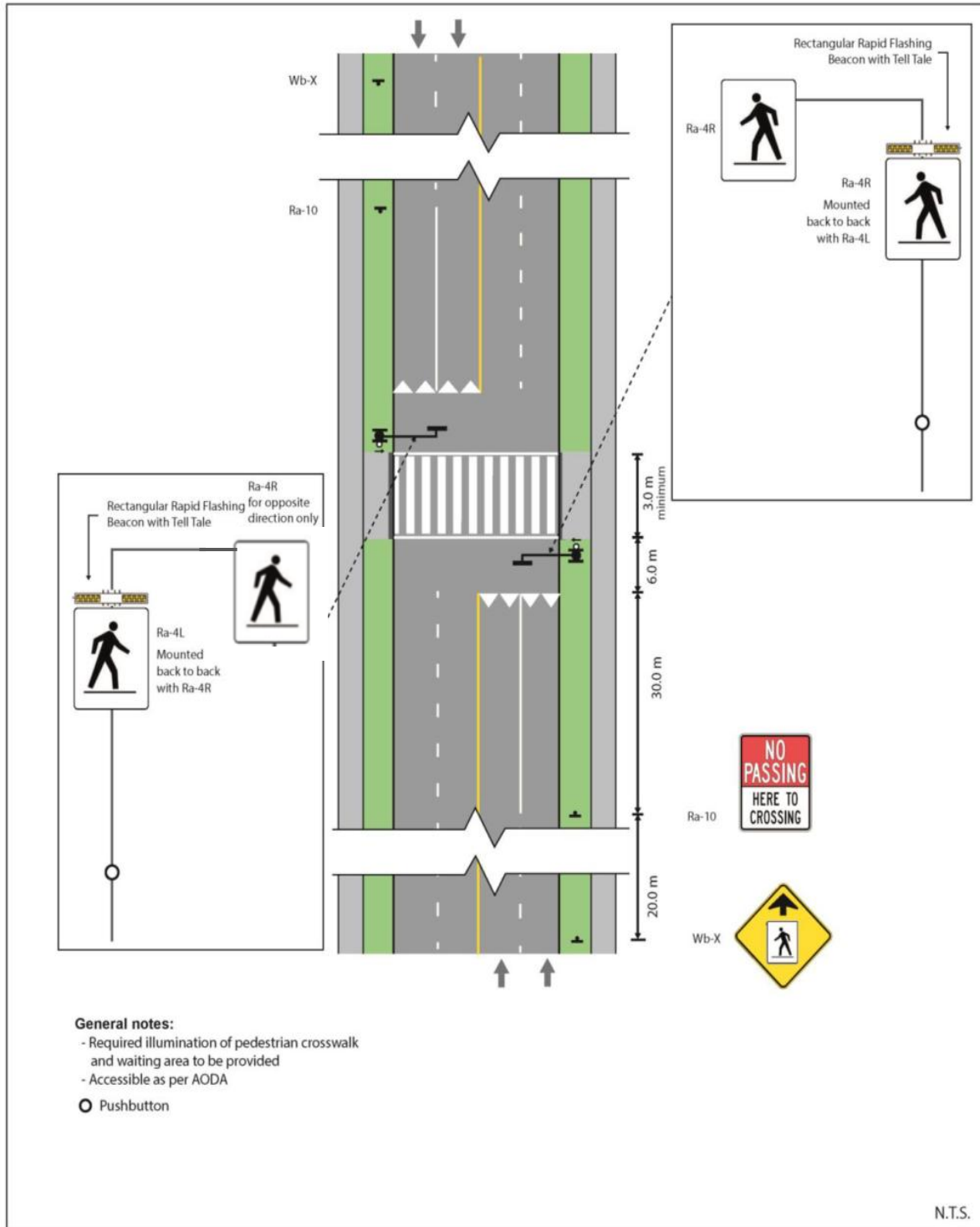


Figure 2 - Type B PXO Diagram



**Figure 3 – Image of Type B PXO Located at Blair Road at Appleford Street**

## TYPE C PXO:

Type C treatments are typically located on medium volume, medium speed, and single lane roadways such as major collectors and lower volume multi lane roundabouts. They consist of roadside mounted signs and rapid flashing beacons on top of the side mounted signs.

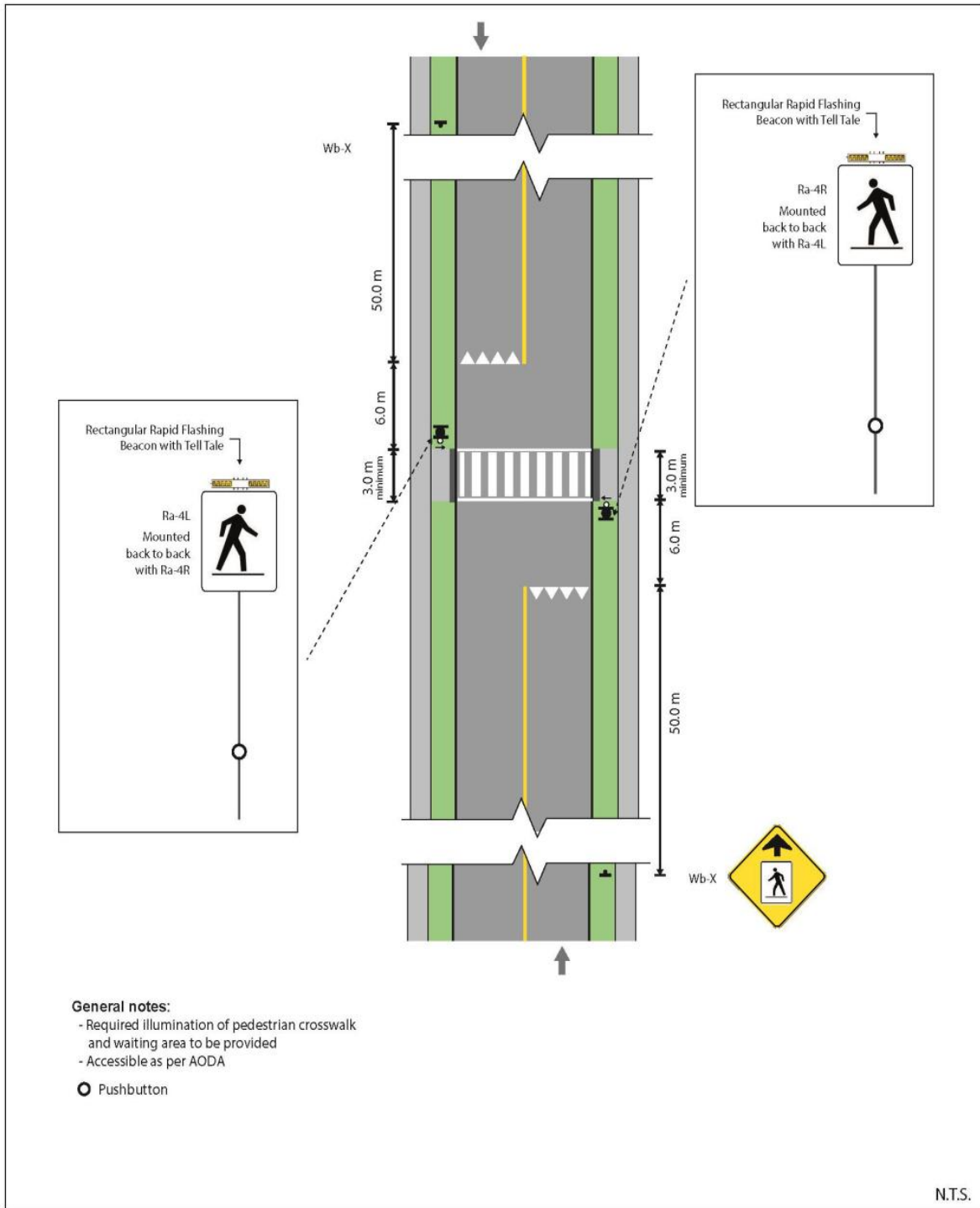


Figure 4 - Type C PXO



**Figure 5 – Image of Type C PXO Located on Carp Road in the Village of Carp**



**Figure 6 – Image of Type C PXO Located at Aquaview Drive and the Trillium Pathway**

## TYPE D PXO:

Type D treatments are typically located on medium to low volume, low speed, and single lane roadways such as collectors, single lane roundabouts and right turn channels. Type D treatments can also be used in conjunction with school crossing guards at school crossing locations. They consist of roadside mounted signs with no rapid flashing beacon.

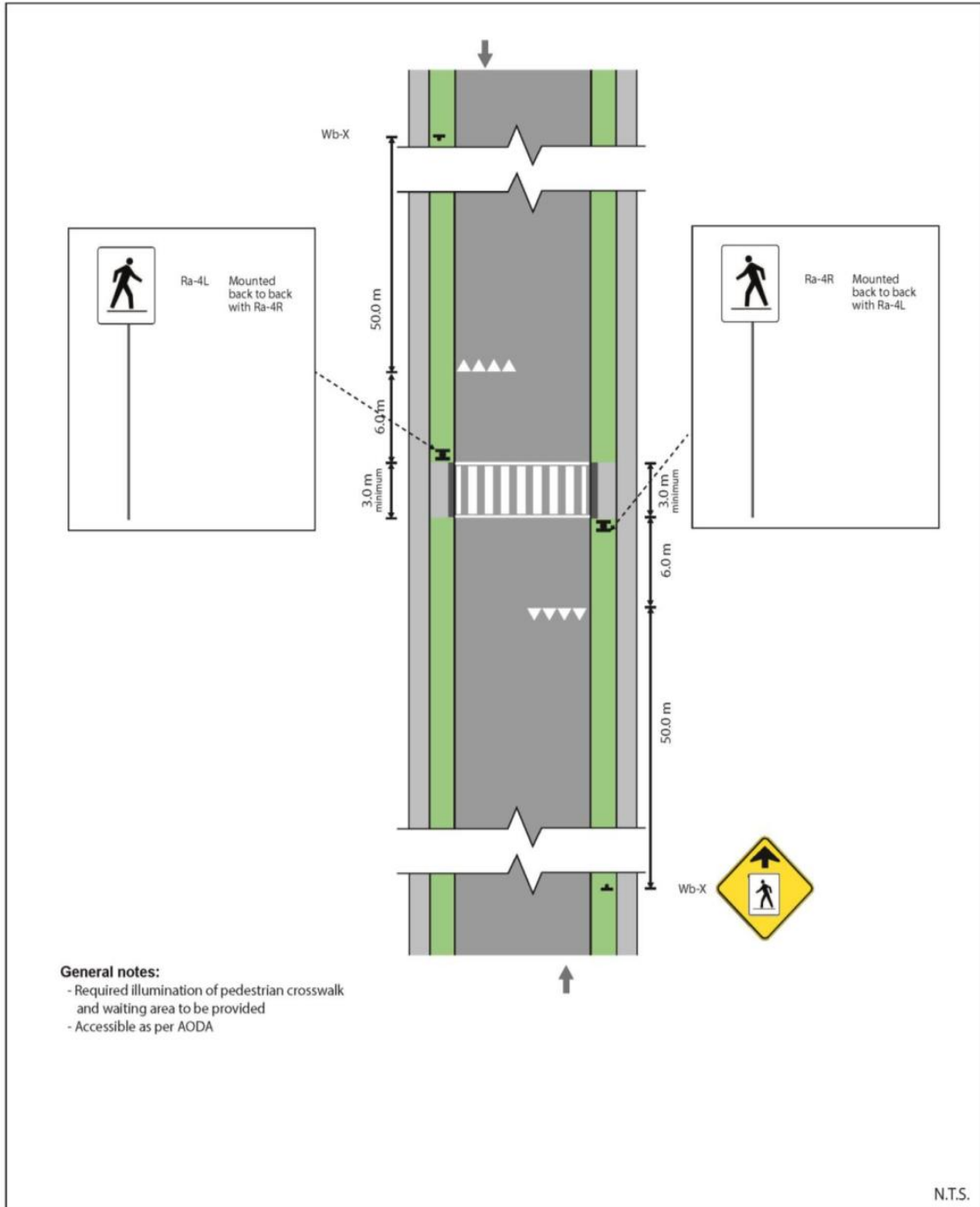


Figure 7 - Type D PXO

## TYPE D PXO - ROUNDABOUT

The PXO layout is similar for Type B and C treatments used in multi lane roundabouts, however, it consists of roadside mounted signs with no rapid flashing beacon.

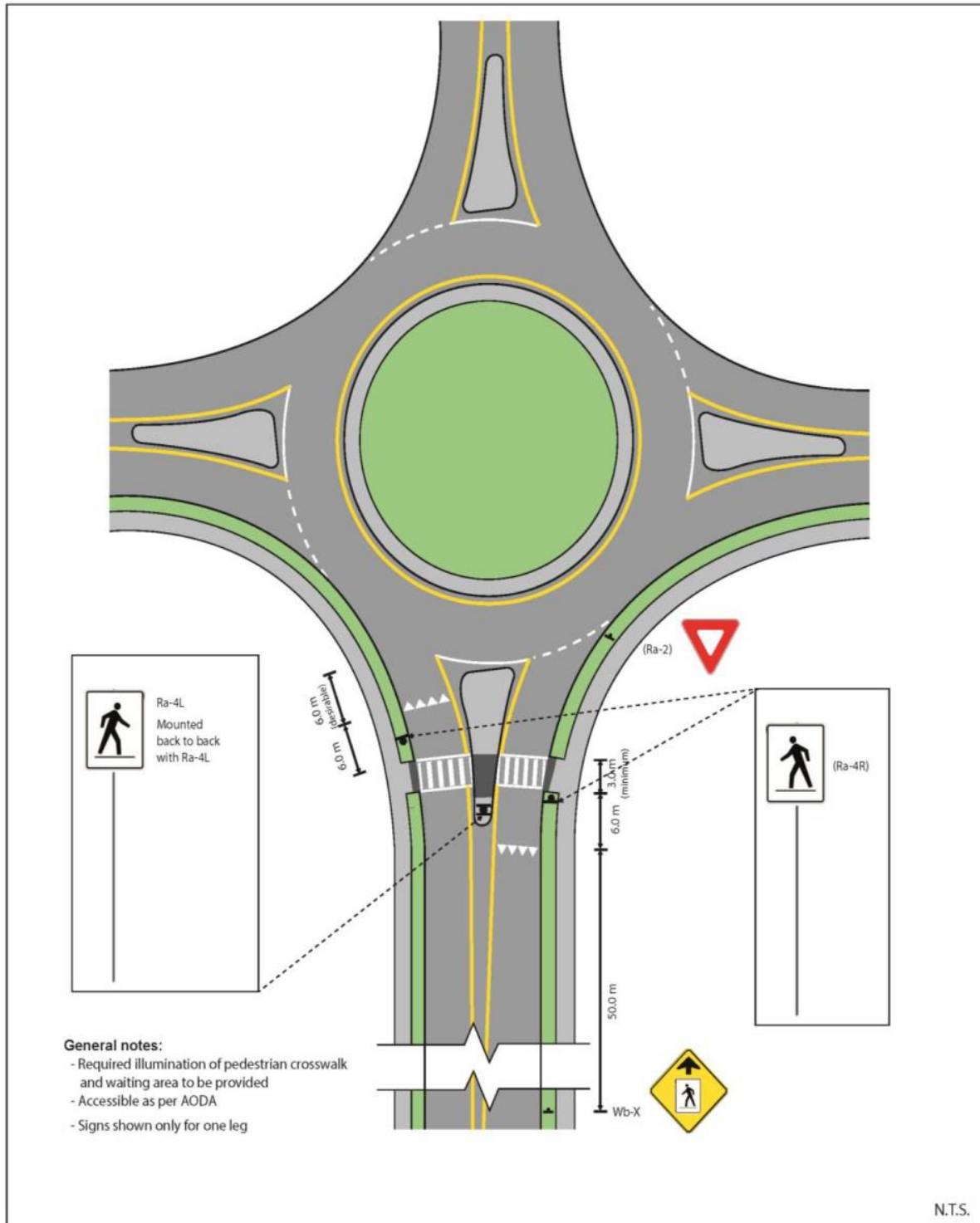


Figure 8 - Type D PXO (Roundabout)



**Figure 9 – Image of Type D PXO located on The Parkway in Kanata**