



Document 1: Official Plan Amendment \_\_\_\_ to the Official Plan for the  
City of Ottawa

**INDEX****THE STATEMENT OF COMPONENTS****PART A – THE PREAMBLE**

PAGE

Purpose 3

Location 3

Basis 3

**PART B – THE AMENDMENT**

Introduction 4

Details of the Amendment 4

**PART C – IMPLEMENTATION**

Implementation and Interpretation 9

## **PART A – THE PREAMBLE**

### **Purpose**

The purpose of this amendment is to update the Significant Wetlands boundaries on Schedules A and B of the Official Plan to reflect the current boundaries of the provincially significant Goulbourn Wetland Complex and to remove the Flewellyn Special Study Overlay and policies from the Official Plan.

### **Location**

This amendment applies to lands in Ward 5 (West Carleton – March), Ward 6 (Stittsville), and Ward 21 (Rideau-Goulbourn).

### **Basis**

In 2011, Council approved the creation of a new Section in the Official Plan, Section 3.2.5 – Flewellyn Special Study Area. The policy created an overlay designation on Schedule A of the Official Plan, along with corresponding policies. The policies prohibited new development within the Flewellyn Special Study Area until studies had been completed to study historical drainage, mineral resources, and provincially significant wetland boundaries. Those studies have been completed. Staff are recommending that Schedules A and B of the Official Plan be updated to reflect the current boundaries of the provincially significant Goulbourn Wetland Complex. The requirements of the Flewellyn Special Study Area overlay having been met, staff recommend its removal from the Official Plan.

## **PART B – THE AMENDMENT**

### 1. Introduction

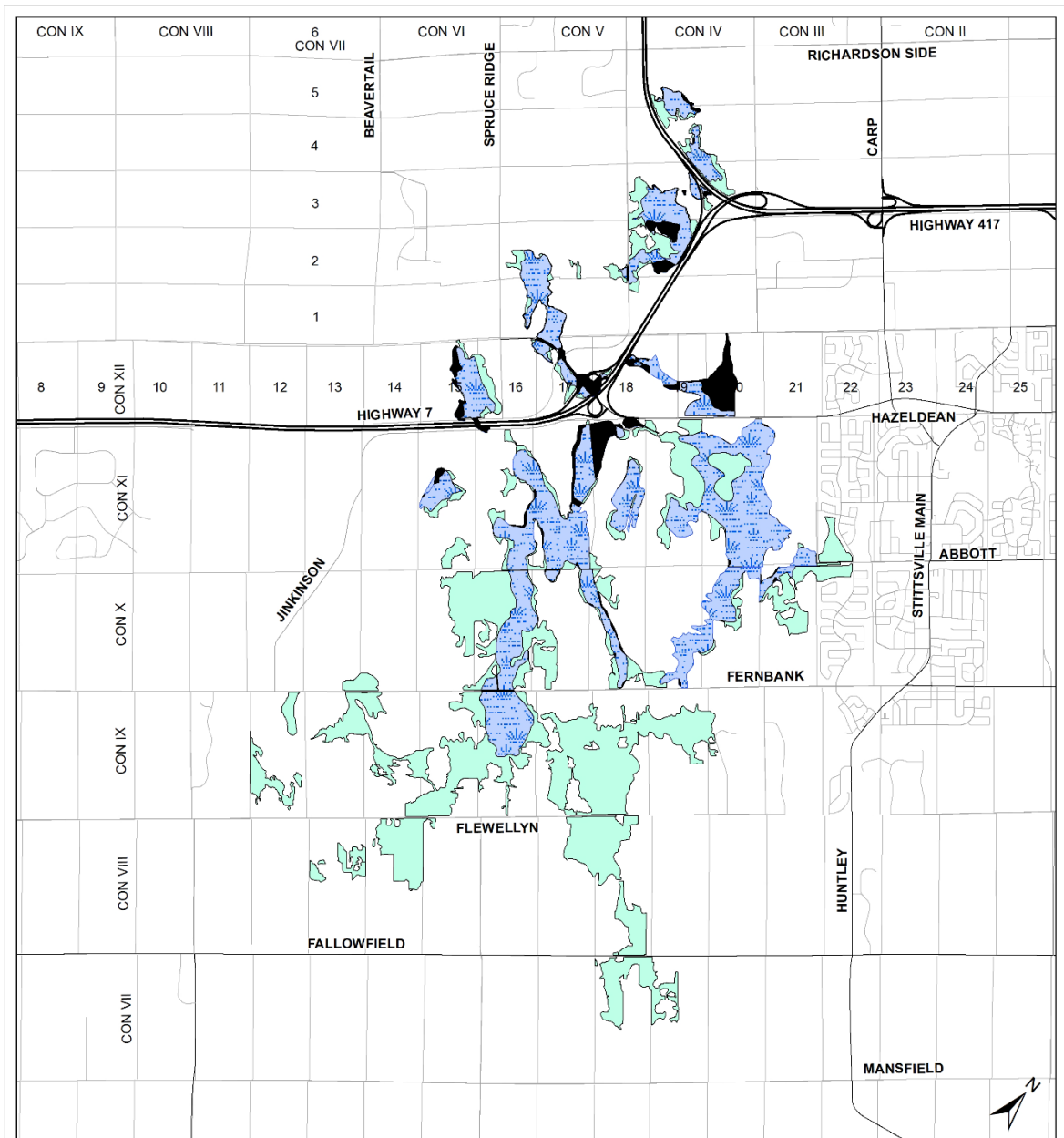
All of this part of this document entitled Part B – The Amendment consisting of the following text and figures constitute Amendment No. \_\_\_\_ to the City of Ottawa Official Plan.

### 2. Details

The following changes are hereby made to the City of Ottawa Official Plan:

- a) Schedules A and B of the Official Plan are amended as shown in Figures 1a to 1c below.
- b) Section 3.2.5 – Flewellyn Special Study Area is removed in its entirety.
- c) The Flewellyn Special Study Overlay is removed from Schedules A and B as shown in Figure 2 below.

Figure 1a



**Ottawa**  
 Planning, Infrastructure and Economic Development Department,  
 GIS and Data Management  
 Services de la planification, de l'infrastructure et du  
 développement économique, SIG et Gestion des données

D01-01-18-0002 | 19-1112-A

I:\AA\Sheila\OPAs\Goulbourn Flewellyn Sched1ARev2020.mxd

09/10/2019

© Parcel data is owned by Terranet Enterprises Inc. and its suppliers.  
 All rights reserved. May not be reproduced without permission.  
 Parcel data appartient à Terranet Entreprises Inc. et à ses fournisseurs.  
 Tous droits réservés. Ne peut être reproduit sans autorisation.

Scale - N.T.S. / Echelle N.A.E.

**SCHEDULE 1A to  
 AMENDMENT NO.**  
 to the OFFICIAL PLAN  
 for the CITY OF OTTAWA  
**Amending Schedule A**  
 Rural Policy Plan

**ANNEXE 1A de  
 L' AMENDEMENT No.**  
 au PLAN OFFICIEL  
 de la VILLE D'OTTAWA  
**Modifiant l'Annexe A**  
 Plan des politiques en milieu rural

- EXISTING SIGNIFICANT WETLANDS / LES TERRES HUMIDES D'IMPORTANCE EXISTANTE
- ADDITIONS TO SIGNIFICANT WETLANDS / AJOUTER À LES TERRES HUMIDES D'IMPORTANCE
- DELETIONS TO SIGNIFICANT WETLANDS / SUPPRESSIONS DE LES TERRES HUMIDES D'IMPORTANCE

Figure 1b

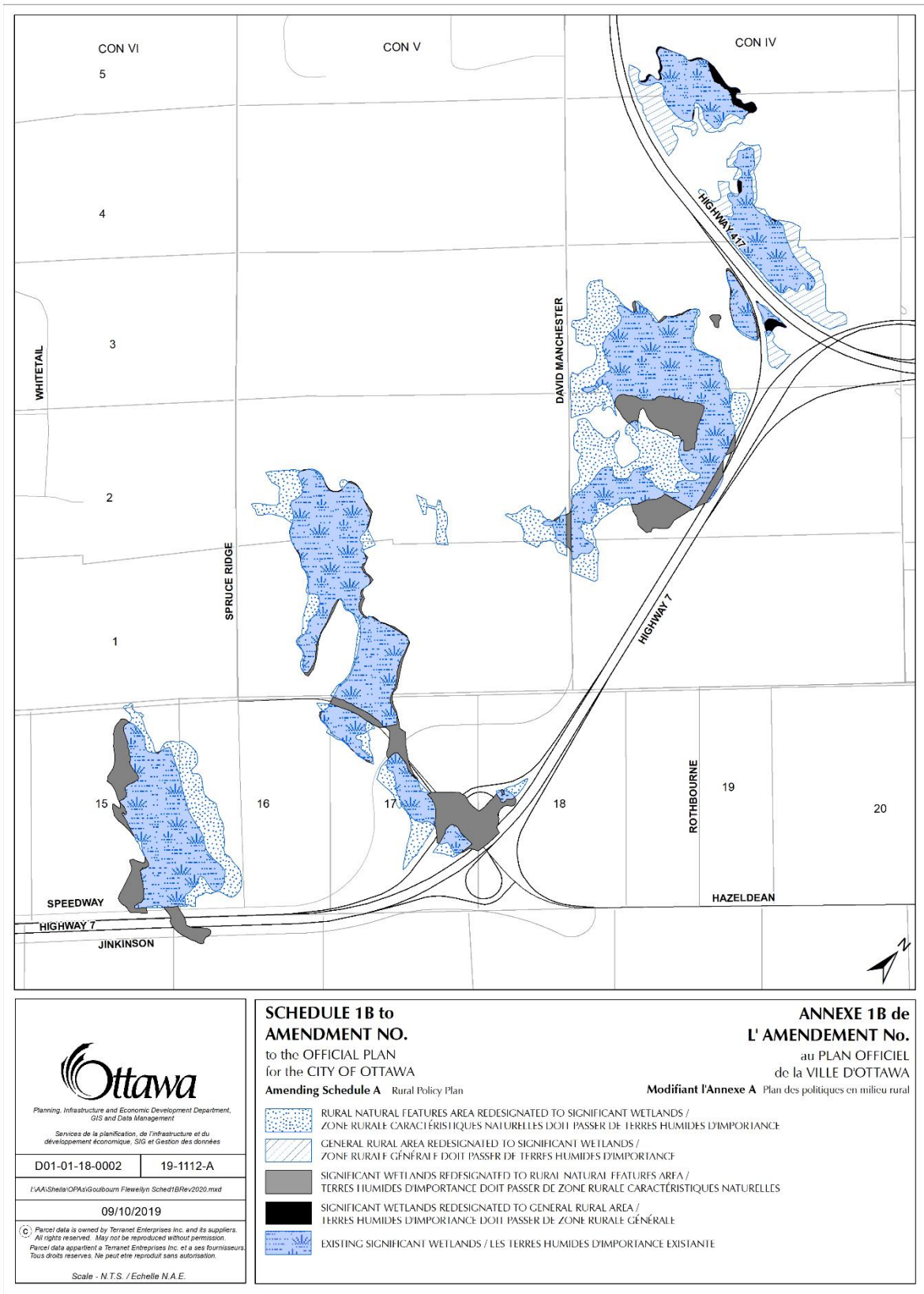
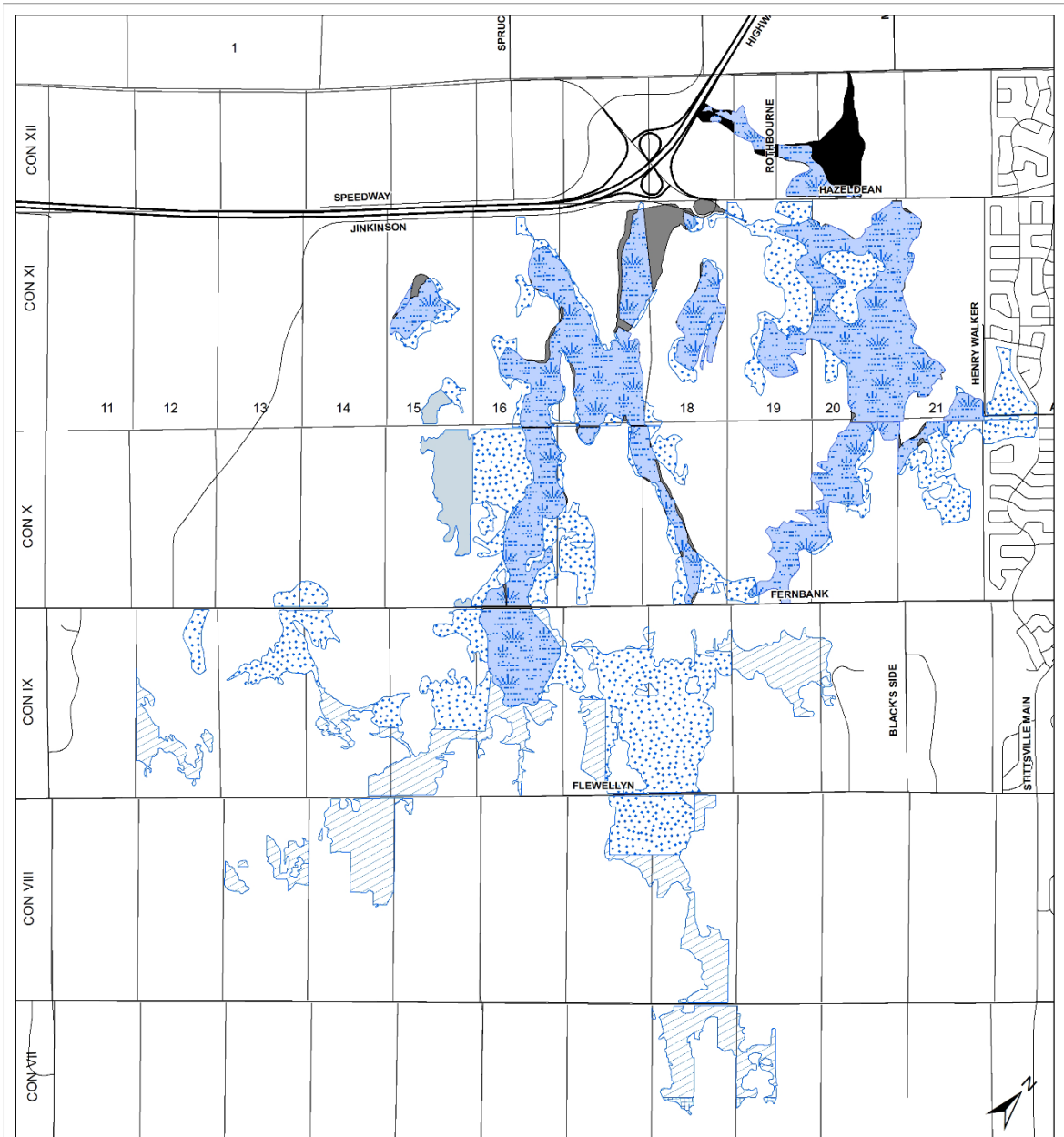


Figure 1c



**Ottawa**  
 Planning, Infrastructure and Economic Development Department,  
 GIS and Data Management  
 Services de la planification, de l'infrastructure et du  
 développement économique, SIG et Gestion des données

D01-01-18-0002 | 19-1112-A

I:\AA\Stella\OPAs\Gouboim Flewellyn\_Sched1CR\en2020.mxd

09/10/2019

Parcel data is owned by Terranet Enterprises Inc. and its suppliers.  
 All rights reserved. May not be reproduced without permission.  
 Parcel data appartient à Terranet Enterprises Inc. et à ses fournisseurs.  
 Tous droits réservés. Ne peut être reproduit sans autorisation.

Scale - N.T.S. / Echelle N.A.E.

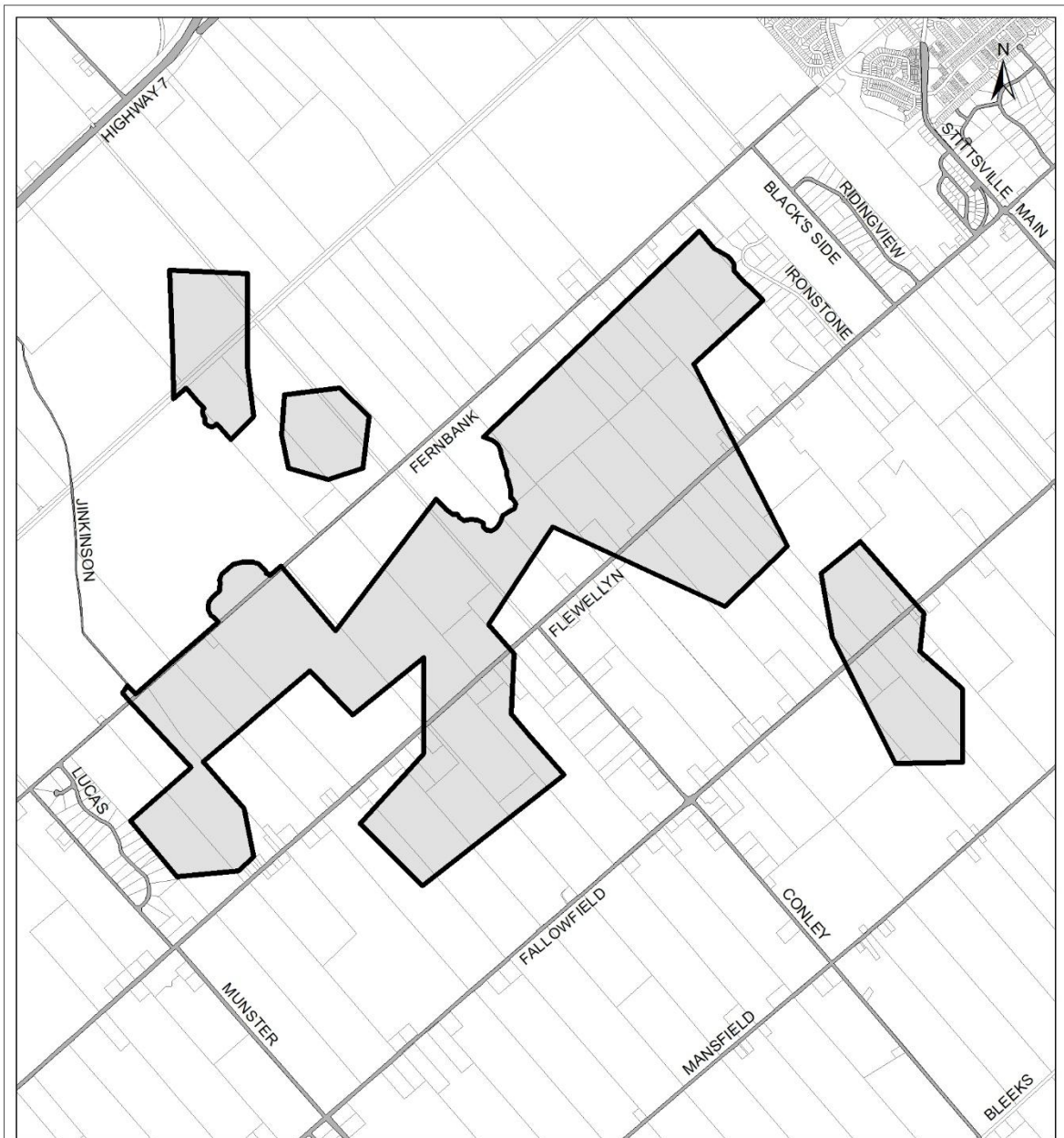
**SCHEDULE 1C to  
 AMENDMENT NO.  
 to the OFFICIAL PLAN  
 for the CITY OF OTTAWA  
 Amending Schedule A Rural Policy Plan**

**ANNEXE 1C de  
 L' AMENDMENT No.  
 au PLAN OFFICIEL  
 de la VILLE D'OTTAWA  
 Modifiant l'Annexe A Plan des politiques en milieu rural**

- RURAL NATURAL FEATURES AREA REDESIGNATED TO SIGNIFICANT WETLANDS /  
 ZONE RURALE CARACTÉRISTIQUES NATURELLES DOIT PASSER DE TERRES HUMIDES D'IMPORTANCE
- GENERAL RURAL AREA REDESIGNATED TO SIGNIFICANT WETLANDS /  
 ZONE RURALE GÉNÉRALE DOIT PASSER DE TERRES HUMIDES D'IMPORTANCE
- AGRICULTURAL RESOURCE AREA REDESIGNATED TO SIGNIFICANT WETLANDS /  
 ZONE DE RESSOURCES AGRICOLES DOIT PASSER DE TERRES HUMIDES D'IMPORTANCE
- BEDROCK RESOURCE AREA REDESIGNATED TO SIGNIFICANT WETLANDS /  
 ZONE DE RESSOURCES EN SUBSTRAT ROCHUEUX DOIT PASSER DE TERRES HUMIDES D'IMPORTANCE
- SIGNIFICANT WETLANDS REDESIGNATED TO RURAL NATURAL FEATURES AREA /  
 TERRES HUMIDES D'IMPORTANCE DOIT PASSER DE ZONE RURALE CARACTÉRISTIQUES NATURELLES
- SIGNIFICANT WETLANDS REDESIGNATED TO GENERAL RURAL AREA /  
 TERRES HUMIDES D'IMPORTANCE DOIT PASSER DE ZONE RURALE GÉNÉRALE
- EXISTING SIGNIFICANT WETLANDS / LES TERRES HUMIDES D'IMPORTANCE EXISTANTES



Figure 2



**Ottawa**  
 Planning, Infrastructure and Economic Development Department  
 Services de la planification de l'infrastructure et du développement économique, SIG et Gestion des données

D01-01-18-0002     19-1112-A

I:\AA\Sheila\OPAs\Goulbourn Flewellyn Sched2.mxd

09/10/2019

© Parcel data is owned by Teranet Enterprises Inc. and its suppliers. All rights reserved. May not be reproduced without permission. Parcel data appartient à Teranet Enterprises Inc. et à ses fournisseurs. Tous droits réservés. Ne peut être reproduit sans autorisation.

Scale - N.T.S. / Echelle N.A.E.

**SCHEDULE 2 to  
 AMENDMENT NO.**  
 to the OFFICIAL PLAN  
 for the CITY OF OTTAWA

**Amending Schedule A  
 Rural Policy Plan**

**ANNEXE 2 de  
 L' AMENDEMENT No.**  
 au PLAN OFFICIEL  
 de la VILLE D'OTTAWA

**Modifiant l'Annexe A  
 Plan des politiques en milieu rural**

 "FLEWELLYN SPECIAL STUDY AREA" TO BE REMOVED /  
 "AIRE D'ÉTUDE SPÉCIALE DE FLEWELLYN" À ENLEVER



**PART C – IMPLEMENTATION**

Implementation and interpretation of this Amendment shall be in accordance with the policies of the Official Plan for the City of Ottawa.