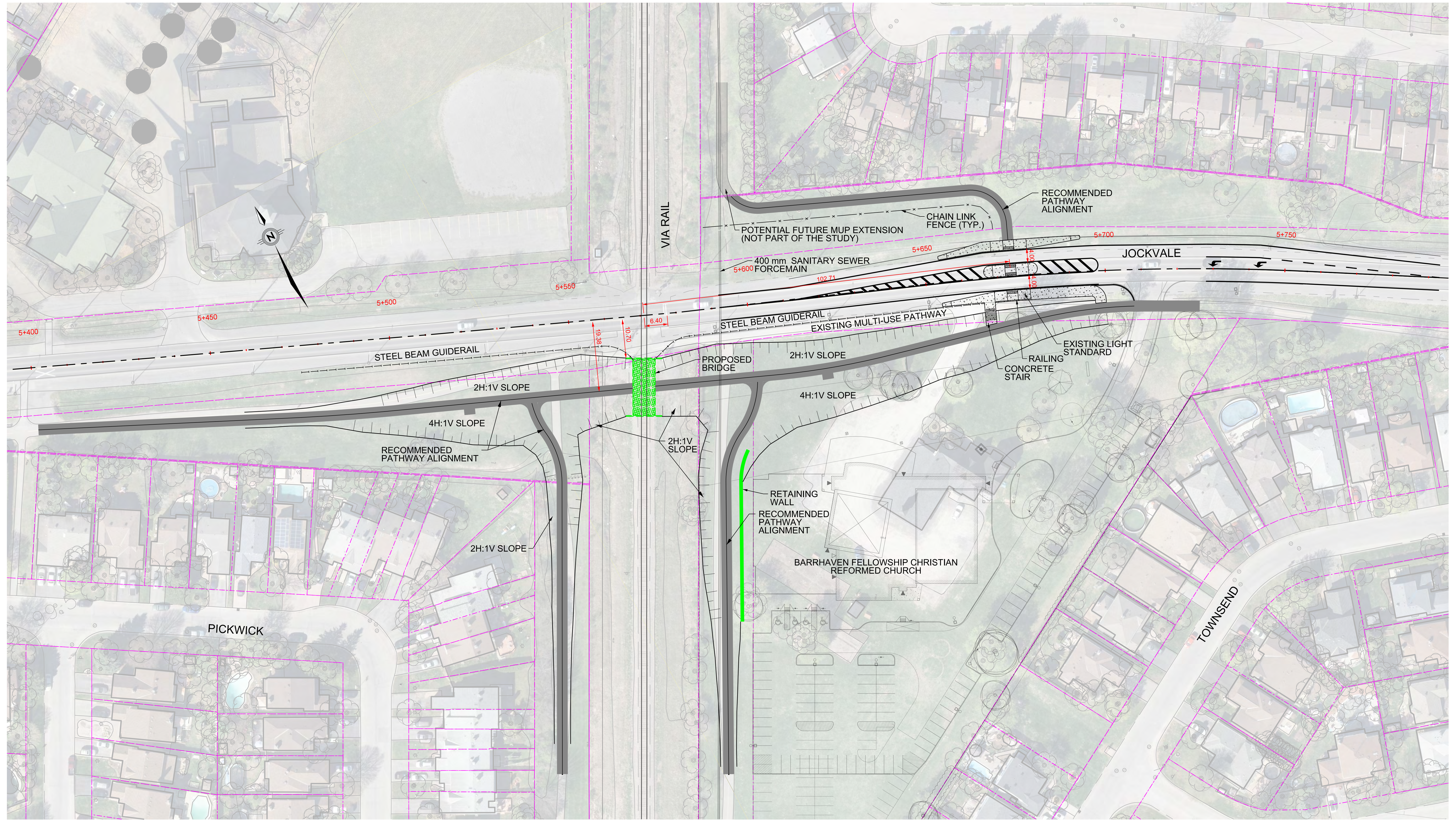


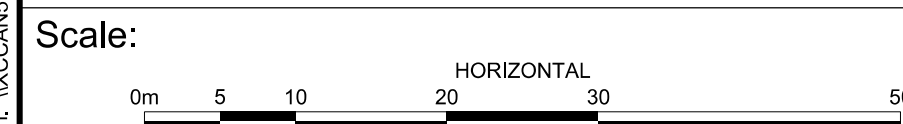
Consultant's Information: \\CC\ANS\F501\DATA\JIS\476768\00\DWG\501-Environmental Assessment\76768-R6-25-MUP-Option 5.Dgn
Last Saved: 7/2/2019 3:03:33 PM
Plot Date: 7/2/2019 10:21:05 AM
TITLE FRAME: 790mm x 534mm City of Ottawa 2008



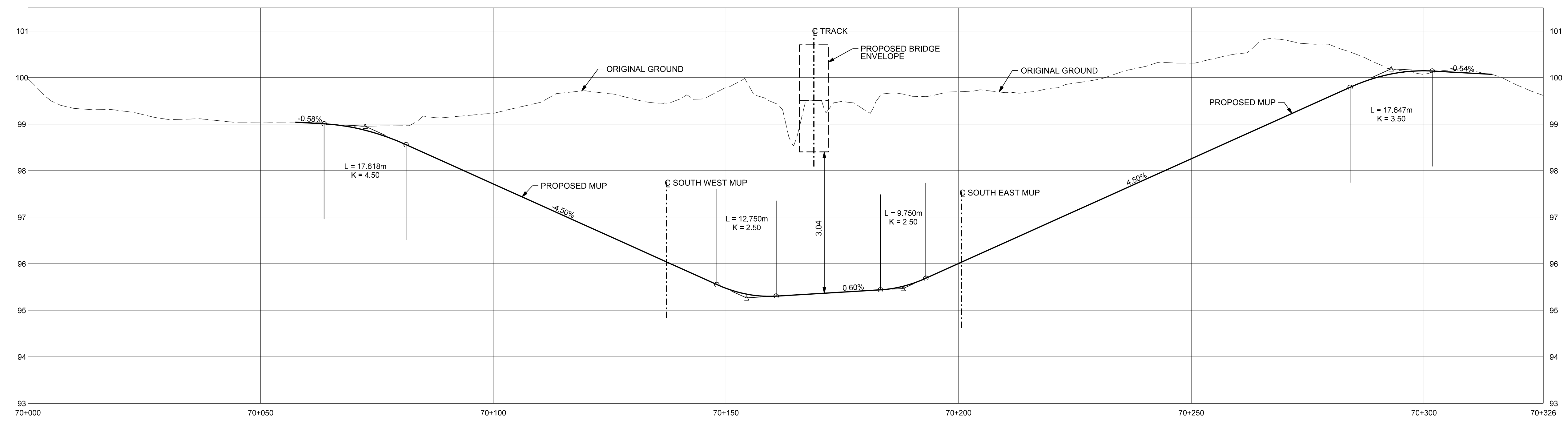
JOCKVALE ROAD
MUP RAIL GRADE SEPARATION
ENVIRONMENTAL ASSESSMENT STUDY



JOCKVALE ROAD
MUP RAIL GRADE SEPARATION



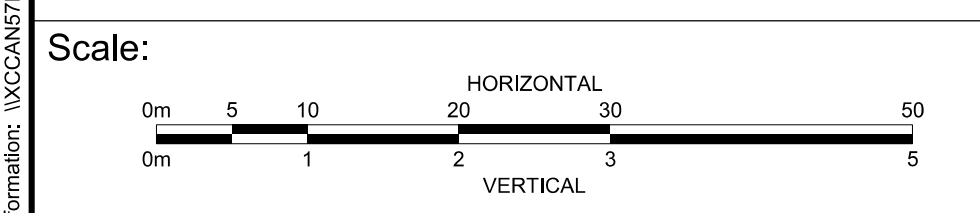
RECOMMENDED PLAN
JULY 3, 2019



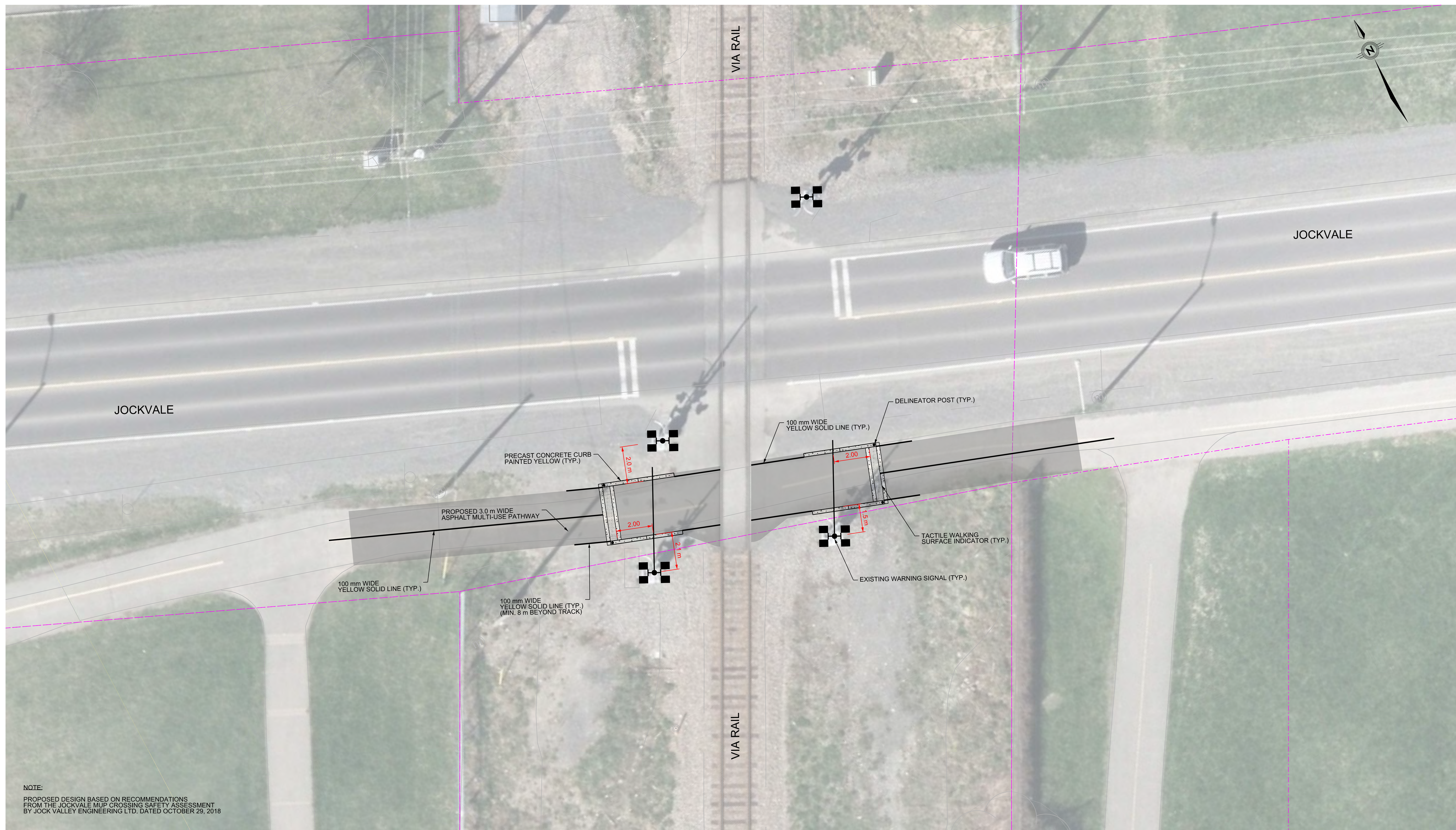
JOCKVALE ROAD
MUP RAIL GRADE SEPARATION
ENVIRONMENTAL ASSESSMENT STUDY



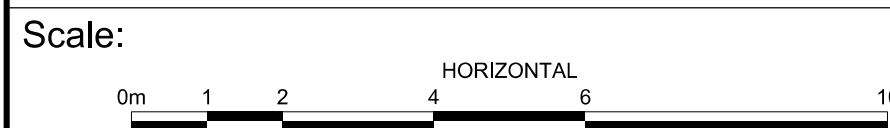
JOCKVALE ROAD
MUP RAIL GRADE SEPARATION



RECOMMENDED PLAN - PROFILE
JULY 3, 2019



NOTE:
 PROPOSED DESIGN BASED ON RECOMMENDATIONS
 FROM THE JOCKVALE MUP CROSSING SAFETY ASSESSMENT
 BY JOCK VALLEY ENGINEERING LTD. DATED OCTOBER 29, 2018



JOCKVALE ROAD
 MUP RAIL GRADE SEPARATION
 ENVIRONMENTAL ASSESSMENT STUDY



JOCKVALE ROAD
 MUP RAIL GRADE SEPARATION

MUP - AT GRADE CROSSING
 NEAR-TERM MODIFICATIONS
 JUNE 26, 2019