

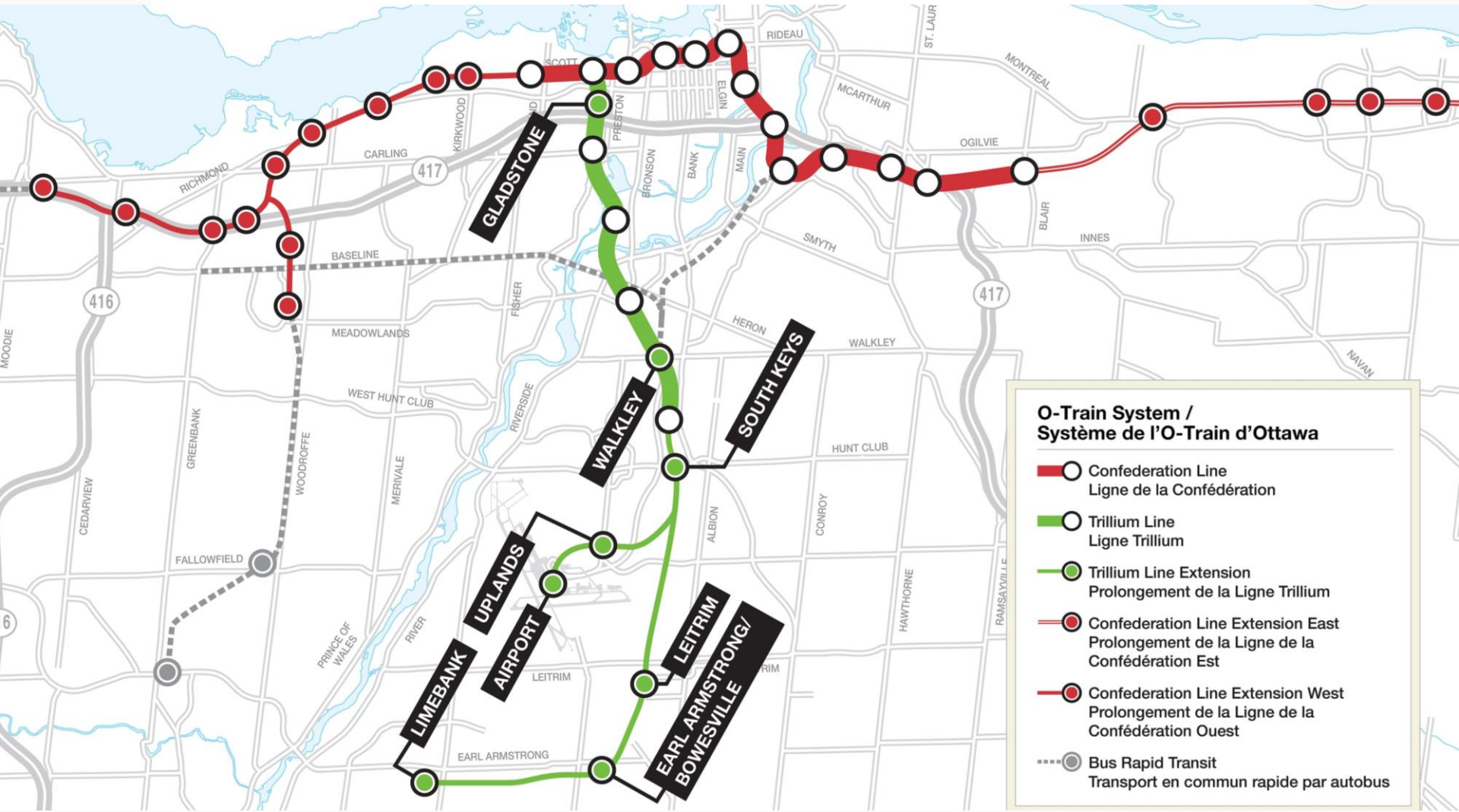


**← STAGE
ETAPE ② →**
↓

May 2020 Update



SOUTH EXTENSION PROLONGEMENT **SUD**



O-Train South Design Update

- The City is reviewing **construction drawings** of the following project elements:
 - Rail bridges along the south extension of the alignment and the Airport Link;
 - Airport Station; and,
 - Utility relocation plans for various structures along the south extension of the alignment and the Airport Link.





O-Train South Design Update *(Cont'd)*

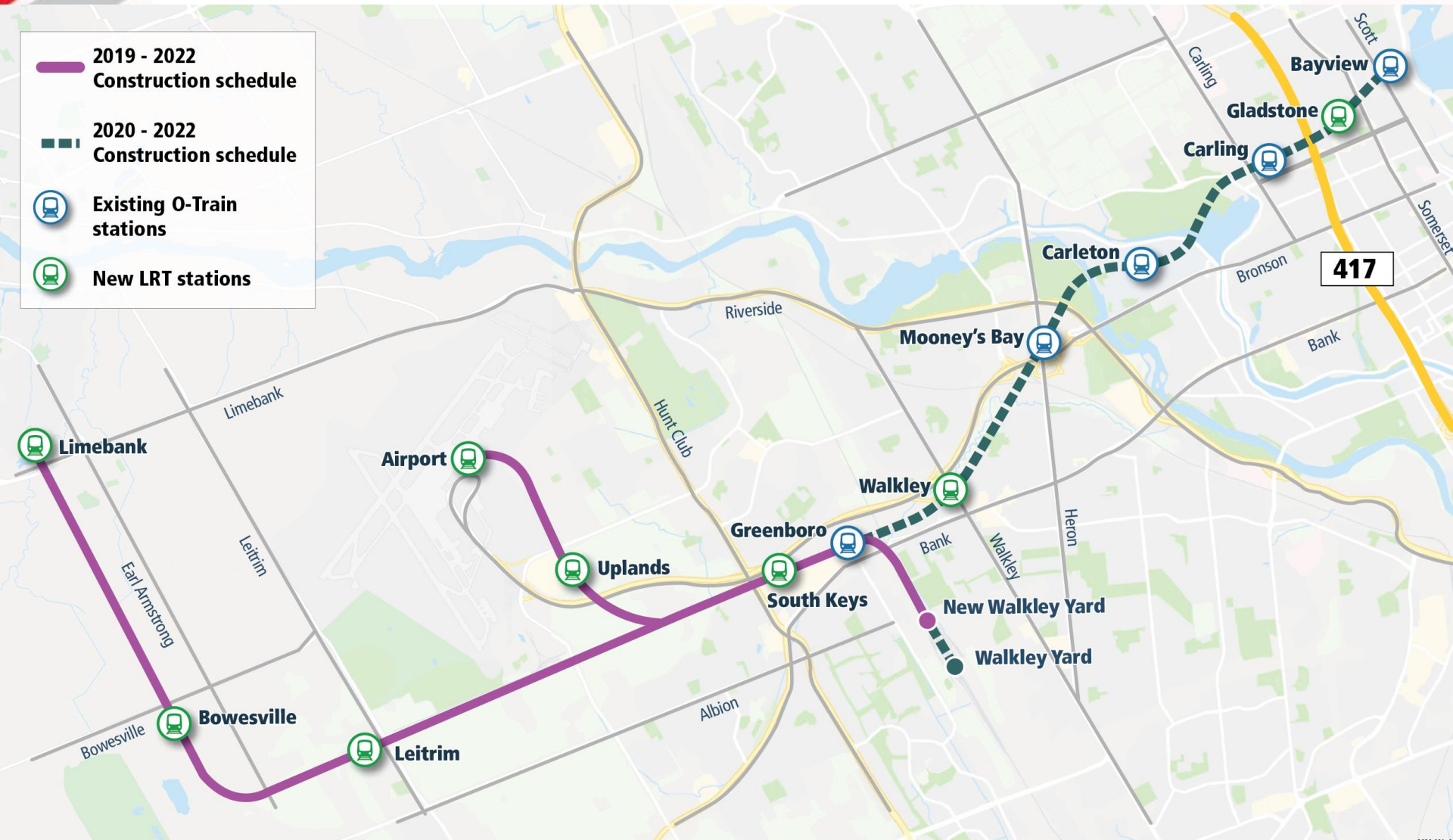
- The City is reviewing **final designs** of the following project elements:
 - Rail bridges throughout the alignment;
 - Vehicle elements, including the car body layout, powerpack and fuel tank, propulsion system and vehicle control system;
 - The systems duct bank for the south extension of the alignment and the Airport Link; and,
 - Fiber Optic relocations for the south extension of the alignment.

O-Train South Design Update *(Cont'd)*

- The City is reviewing **preliminary designs** for the following project elements:
 - Trackwork and structures along the existing alignment;
 - Utility relocations along the existing alignment;
 - New Walkley Yard;
 - Dow's Lake Tunnel, including tunnel ventilation; and,
 - Communication Systems design for Mooney's Bay, Gladstone, Walkley stations and the New Walkley Yard.

O-Train South Construction

-  2019 - 2022 Construction schedule
-  2020 - 2022 Construction schedule
-  Existing O-Train stations
-  New LRT stations



Walkley Maintenance Facility



Pouring grade beams at the Walkley MSF.

Rail Bridge & Elevated Guideway Progress

Structures	Caissons	Piers	Pier Caps	Girders
Airport Parkway Rail Bridge	100%	100%	100%	0%
Uplands Rail Bridge	100%	100%	100%	0%
Airport Elevated Guideway	59%	0%	0%	0%
Lester Rail Bridge	50%	0%	0%	0%
Leitrim Rail Bridge	50%	0%	0%	0%
Bowesville Rail Bridge	100%	50%	50%	0%
Earl Armstrong Rail Bridge	100%	0%	0%	0%
Limebank Elevated Guideway	40%	0%	0%	0%

Airport Parkway Rail Bridge



East pier cap has been poured and is curing.

Uplands Rail Bridge



Uplands (east) substructure.



Uplands (west) substructure.

Airport Elevated Guideway



Completed caisson.

Guideway



Ditching and grade works between Lester Road and Leitrim Road.

Bowesville Rail Bridge



Column construction is underway on the west side of Bowesville Road.

Bowesville Park and Ride



Placement and compaction of subgrade is underway at the future 800-space Bowesville Park and Ride.

Limebank Elevated Guideway



Caisson drilling is underway on the west side of Limebank Road.

Upcoming Work

- Site preparation on existing Line 2 (Trillium Line):
 - Install fencing at Gladstone Station and Ellwood Diamond;
 - Track removal at Gladstone Station, Ellwood Diamond, and Dows Lake Tunnel; and,
 - Prepare laydown area at Dow's Lake Tunnel south portal.
- Rock excavation between Gladstone and Carling Avenue;
- Embankment construction at Airport Parkway;
- Guideway construction to continue;
- Girder installation at Trillium Line Rail Bridges; and,
- Begin station construction.

Rock Excavation - Gladstone to Carling



Rock Excavation - Gladstone to Carling

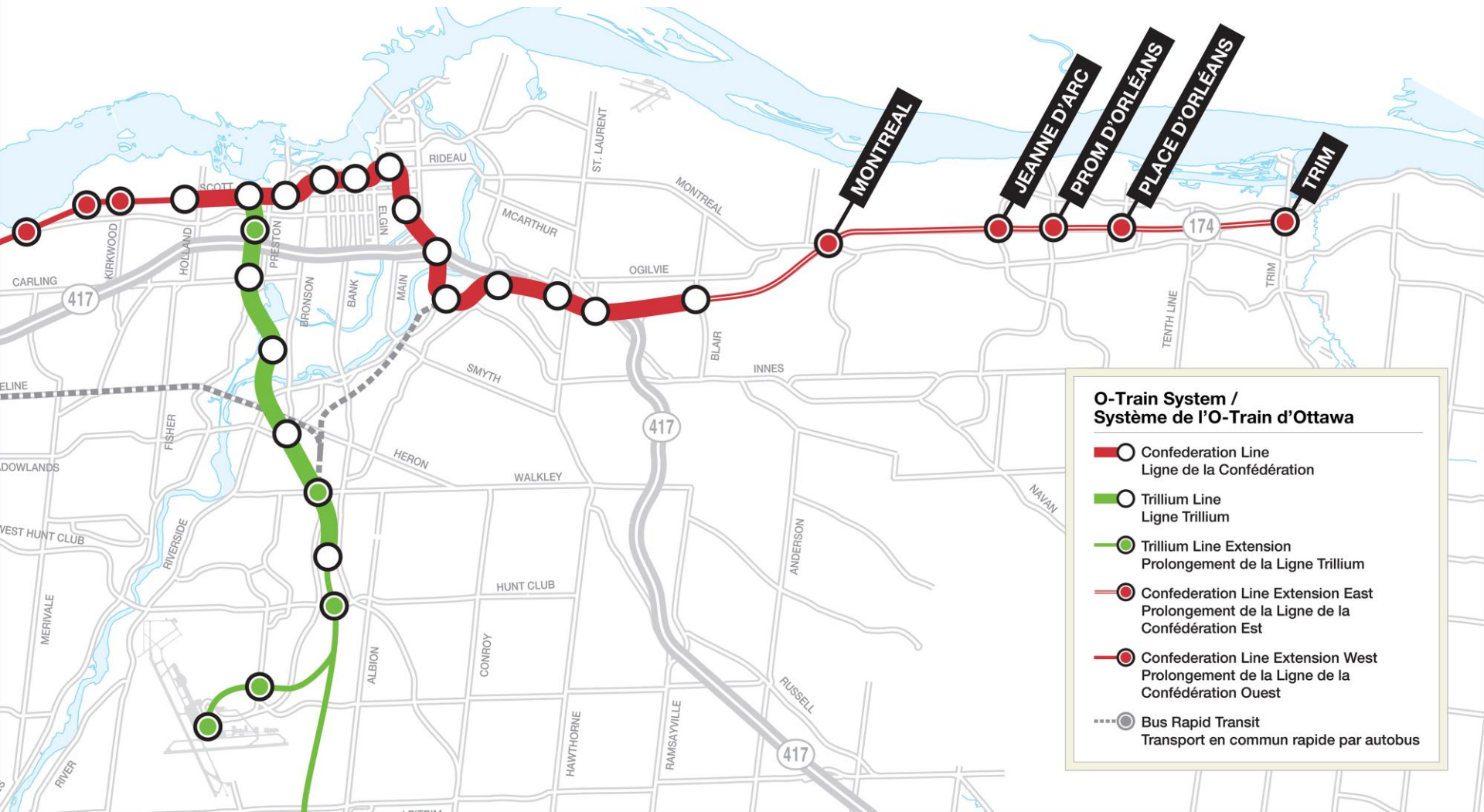


Traffic and Mobility Impacts

Location	Timeline	Traffic & Mobility Impacts
O-Train Line 2	May 2020 to August 2022	The existing Trillium Line will be closed to allow upgrades to the line, existing stations and the construction of new stations.
Multi-use path (MUP) at Carleton Station	Summer 2020 to Fall 2021	Extension of the station will require temporary closure of the MUP in this area.
MUP at Gladstone	Summer 2020	Drilling and rock excavation to widen the rail corridor at Gladstone will temporarily impact access to the MUP in this area.
Rail Bridge Construction	Spring to Summer 2020	Erection of bridge girders and underdeck work will require temporary lane closures which will affect vehicular traffic.



EAST EXTENSION PROLONGEMENT **EST**



O-Train System / Système de l'O-Train d'Ottawa

- Confederation Line
Ligne de la Confédération
- Trillium Line
Ligne Trillium
- Trillium Line Extension
Prolongement de la Ligne Trillium
- Confederation Line Extension East
Prolongement de la Ligne de la Confédération Est
- Confederation Line Extension West
Prolongement de la Ligne de la Confédération Ouest
- Bus Rapid Transit
Transport en commun rapide par autobus

O-Train East Design Update

- The City has received **construction drawings** for the following project elements:
 - Wet Utilities (storm, sewer, and water);
 - Montreal Flyover Bridge;
 - Montreal Road Highway 174 Bridges (Bridges 5 & 7); and,
 - Green's Creek Culvert.

O-Train East Design Update *(Cont'd)*

- The City is reviewing **construction drawings** for the following project elements:
 - Utility expansion works;
 - Roadway Drainage works; and,
 - OR174 Variable Message Sign relocation.

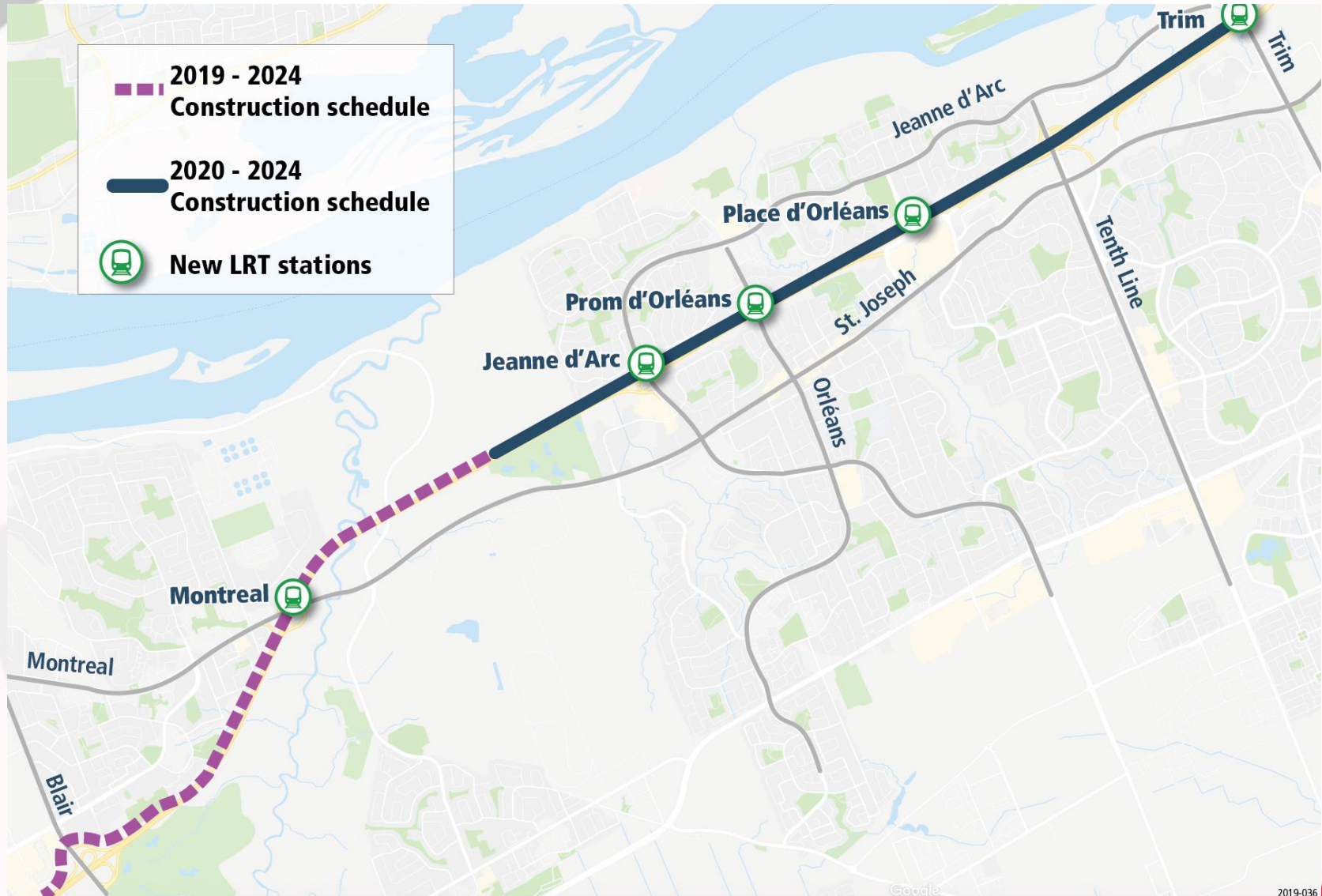
O-Train East Design Update *(Cont'd)*

- The City is reviewing **final designs** for the following project elements:
 - Trim, Place d'Orléans and Jeanne d'Arc stations; and,
 - System communications.

O-Train East Design Update *(Cont'd)*

- The City is reviewing **preliminary designs** of the following project elements:
 - Montreal Station Bridge;
 - Green's Creek Pedestrian Bridge;
 - Traction Power Substations – East Alignment;
 - Communications – Systemwide;
 - Train Control and Signaling;
 - Overhead Catenary System – Systemwide;
 - Traction Power – Systemwide; and,
 - Track and Guideway Overall Design.

O-Train East Construction



Montreal Interchange



Montreal Interchange (Cont'd)

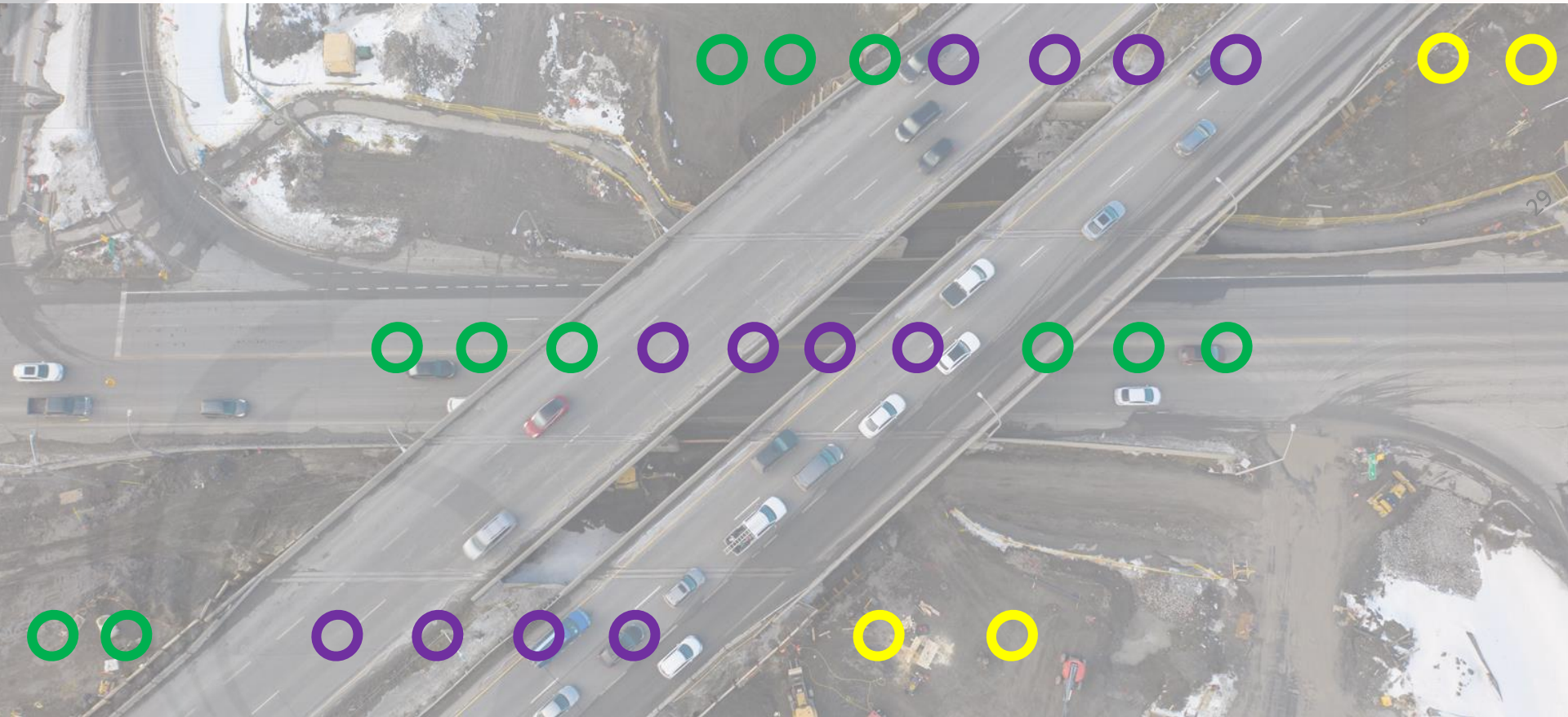


Montreal Interchange (Cont'd)



Caisson construction (left) and column construction (right) are underway.

Montreal Interchange Foundation Progress



 Completed Caisson  Completed Column  To be completed in 2021

Highway 174 Roadworks



Highway 174 Roadworks



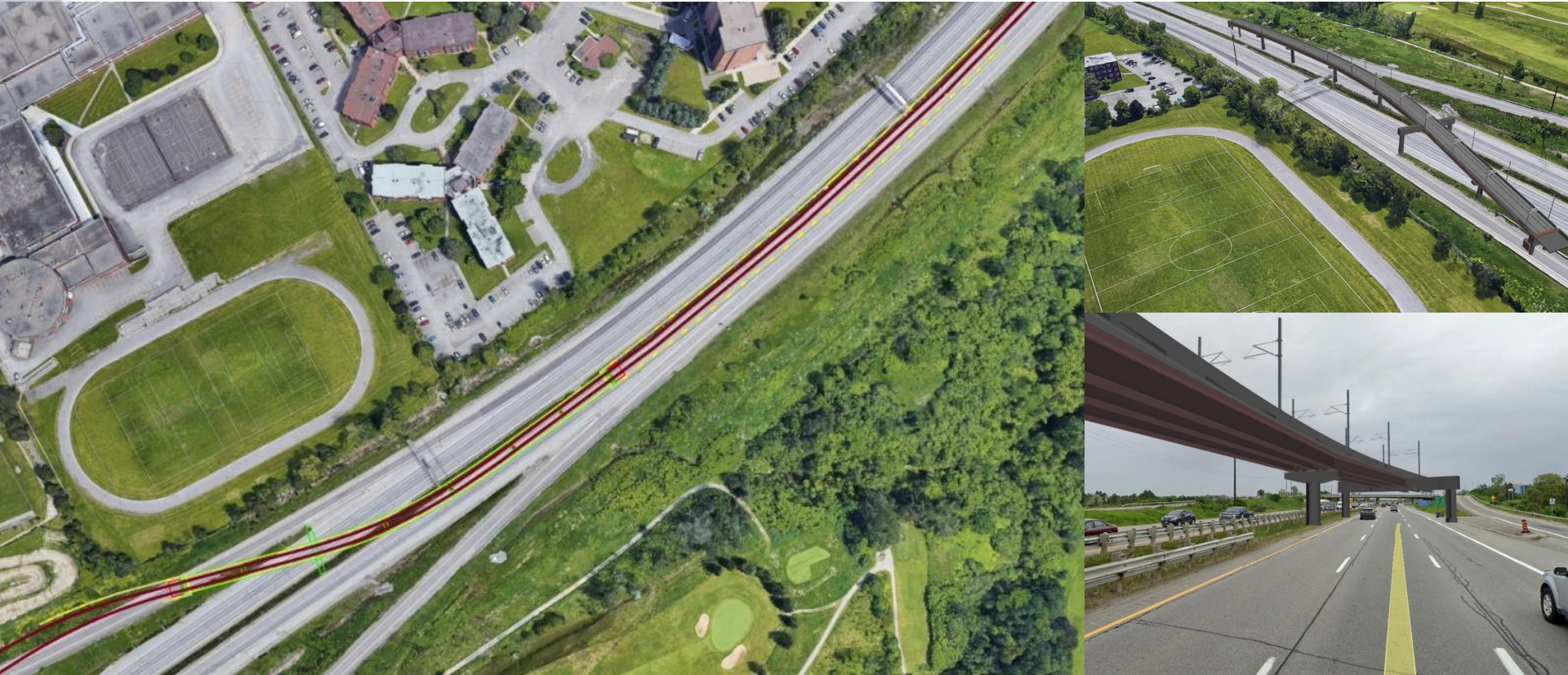
Roadworks on the south side of Highway 174, near Jasmine Crescent.

Highway 174 Roadworks



Roadworks on the south side of Highway 174, near Jasmine Crescent.

East Flyover Rail Bridge



The East Flyover Rail Bridge will bring the Confederation Line East from the north side of the highway into the Highway 174 median

East Flyover Rail Bridge (Cont'd)



The East Flyover Rail Bridge will bring the Confederation Line East from the north side of the highway into the Highway 174 median

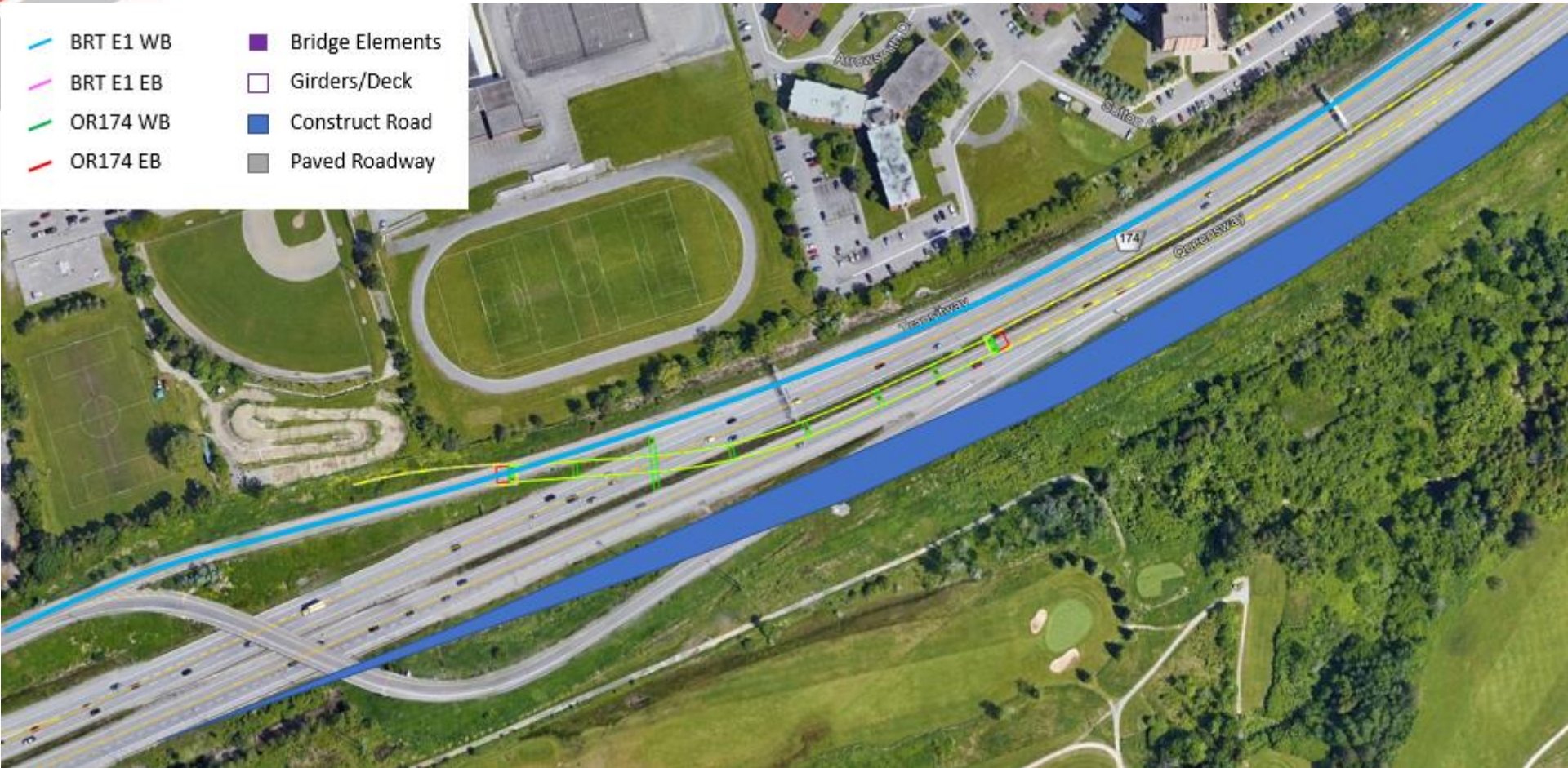
East Flyover Rail Bridge (Cont'd)



The East Flyover Rail Bridge will bring the Confederation Line East from the north side of the highway into the Highway 174 median

Highway 174 Roadworks

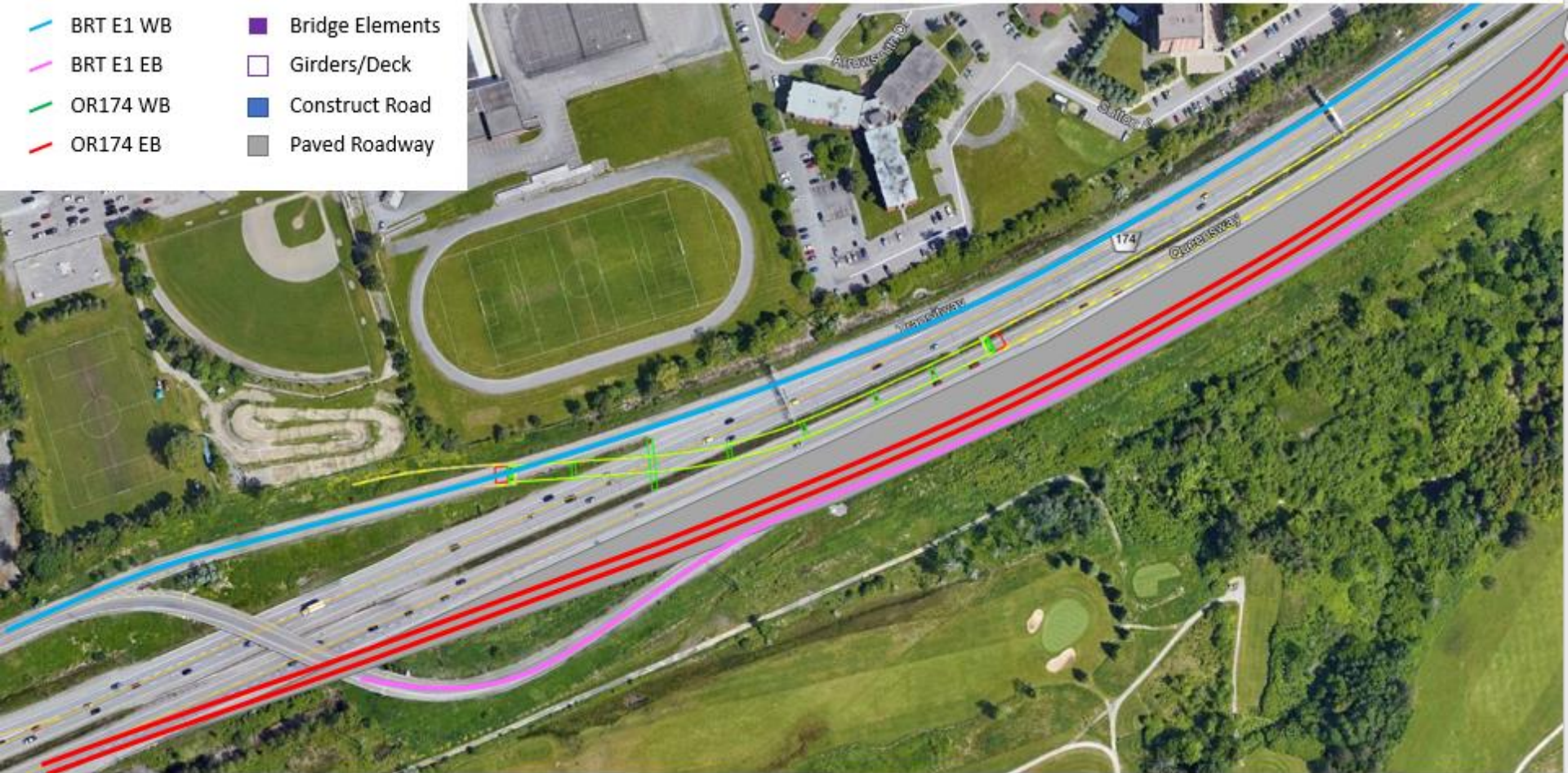
- BRT E1 WB
- BRT E1 EB
- OR174 WB
- OR174 EB
- Bridge Elements
- Girders/Deck
- Construct Road
- Paved Roadway



New lanes are being constructed on the south side of Highway 174 between Blair Road and Montreal Road.

Highway 174 Roadworks (Cont'd)

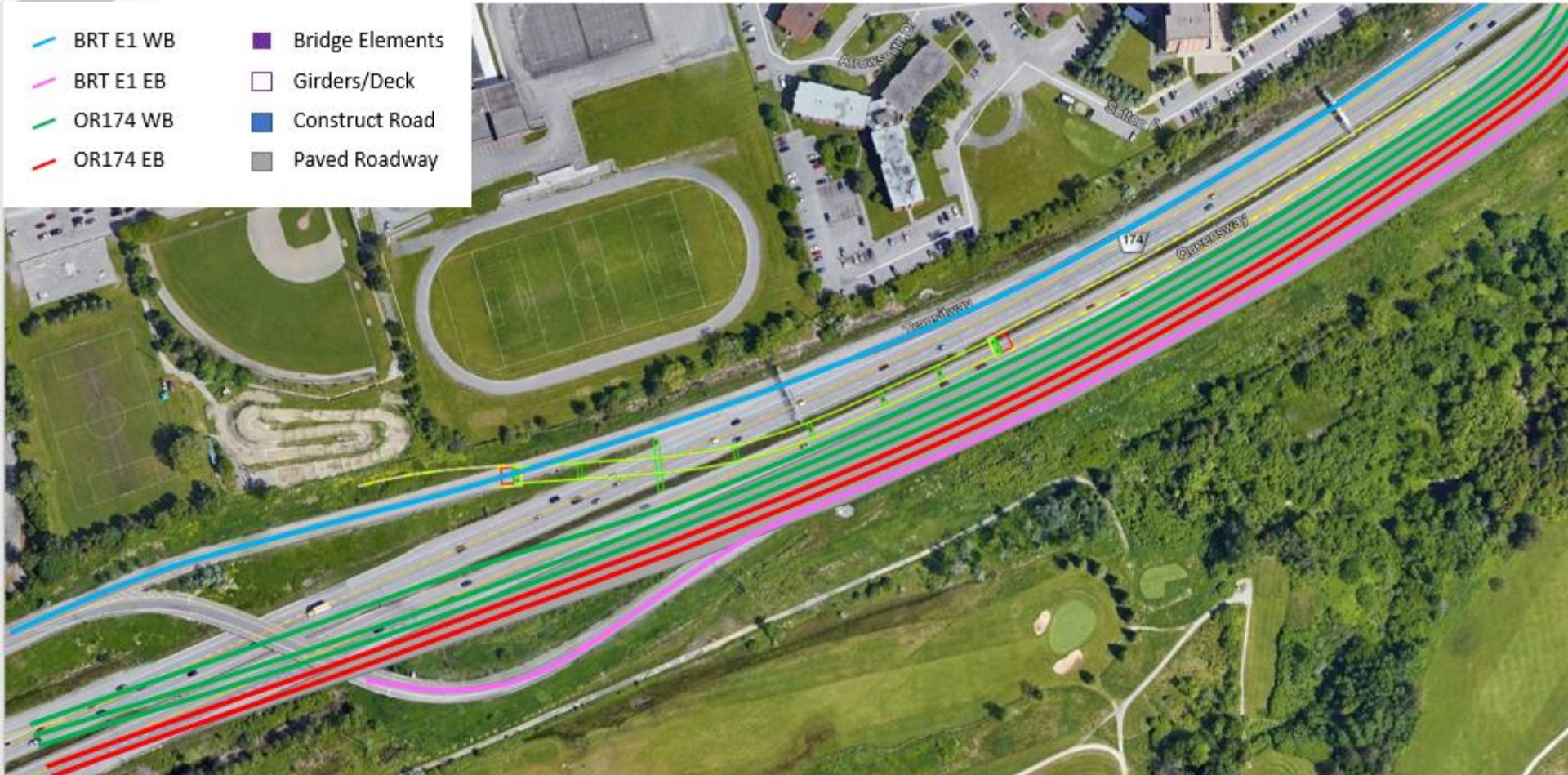
- BRT E1 WB
- BRT E1 EB
- OR174 WB
- OR174 EB
- Bridge Elements
- Girders/Deck
- Construct Road
- Paved Roadway



Eastbound traffic will shift to new lanes allowing construction to begin on temporary westbound lanes.

Highway 174 Roadworks (Cont'd)

- BRT E1 WB
- BRT E1 EB
- OR174 WB
- OR174 EB
- Bridge Elements
- Girders/Deck
- Construct Road
- Paved Roadway



Later this summer, traffic will shift to new lanes allowing construction to begin in median.

Upcoming Work

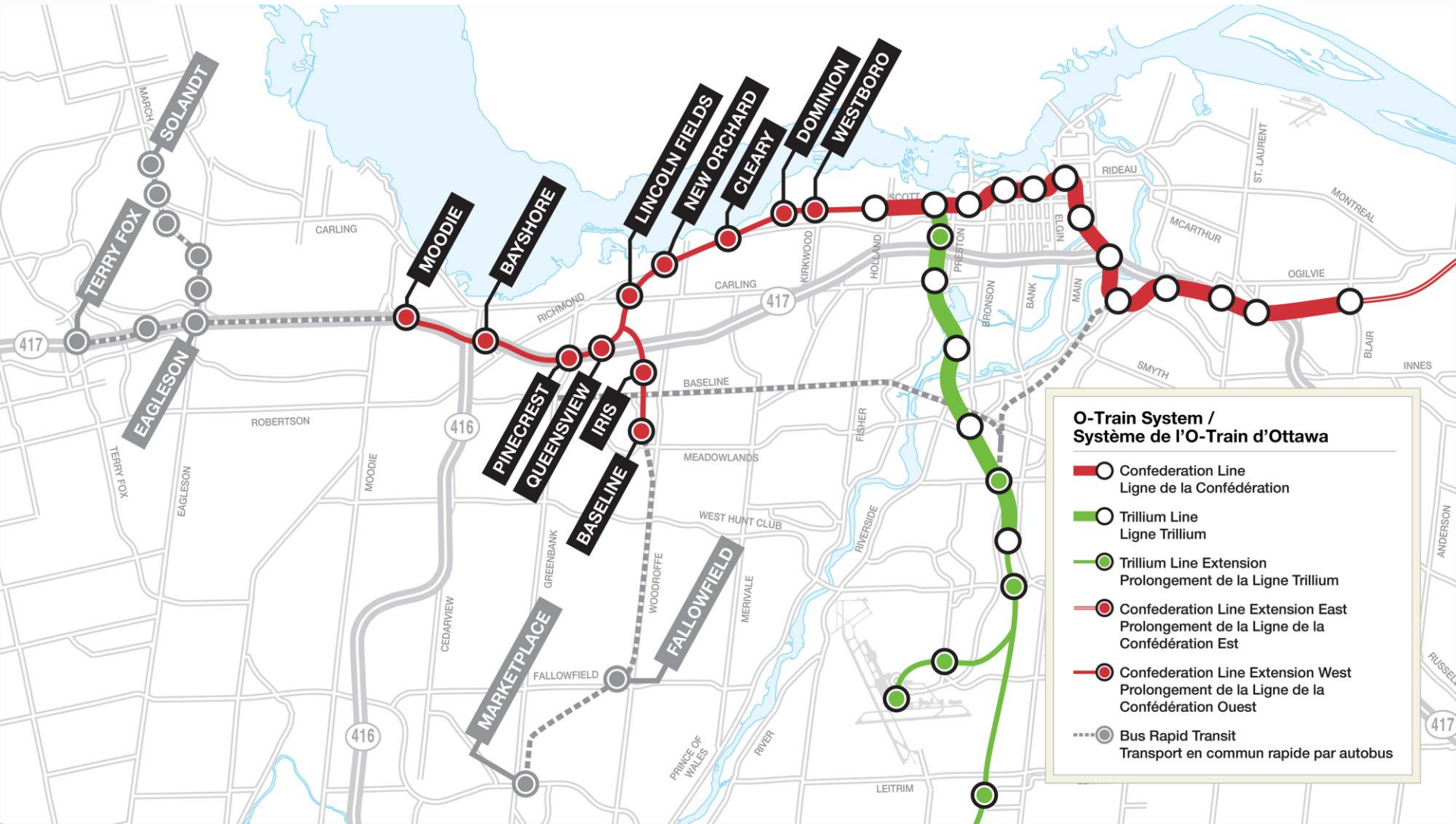
- Jeanne d'Arc and Shefford Watermain work to continue;
- Montreal Interchange bridge foundation work to continue;
- Culvert Extension east of existing transitway flyover at Blair;
- Utility Relocation at Champlain Avenue and Highway 174;
- Roadworks on the south side Highway 174;
- Utility relocation at Trim Intersection; and,
- Foundation work for East Flyover Rail Bridge;

Traffic & Mobility Impacts

Location	Timeline	Traffic & Mobility Impacts
Montreal Road at Highway 174	April to early September	Montreal Road reduced to 1 lane in each direction at the 174 interchange for bridge construction
Highway 174 (Blair Road to Trim Road)	February to late Fall 2020	Continued lane and ramp closures in both directions during off-peak hours.



WEST EXTENSION PROLONGEMENT OUEST



**O-Train System /
Système de l'O-Train d'Ottawa**

- Confederation Line
Ligne de la Confédération
- Trillium Line
Ligne Trillium
- Trillium Line Extension
Prolongement de la Ligne Trillium
- Confederation Line Extension East
Prolongement de la Ligne de la Confédération Est
- Confederation Line Extension West
Prolongement de la Ligne de la Confédération Ouest
- Bus Rapid Transit
Transport en commun rapide par autobus

O-Train West Design Update

- The City has received **construction drawings** of the following project elements:
 - Stillwater Creek Bridges & Pinecrest Creek Culvert; and,
 - Sir John A. Macdonald Parkway Detour.

O-Train West Design Update (*Cont'd*)

- The City is reviewing **construction drawings** for the following project elements:
 - Utility expansion works;
 - Support of Excavation – Parkway Tunnel;
 - Various bridge structures throughout the alignment; and,
 - Bus operator facilities at Baseline Station.

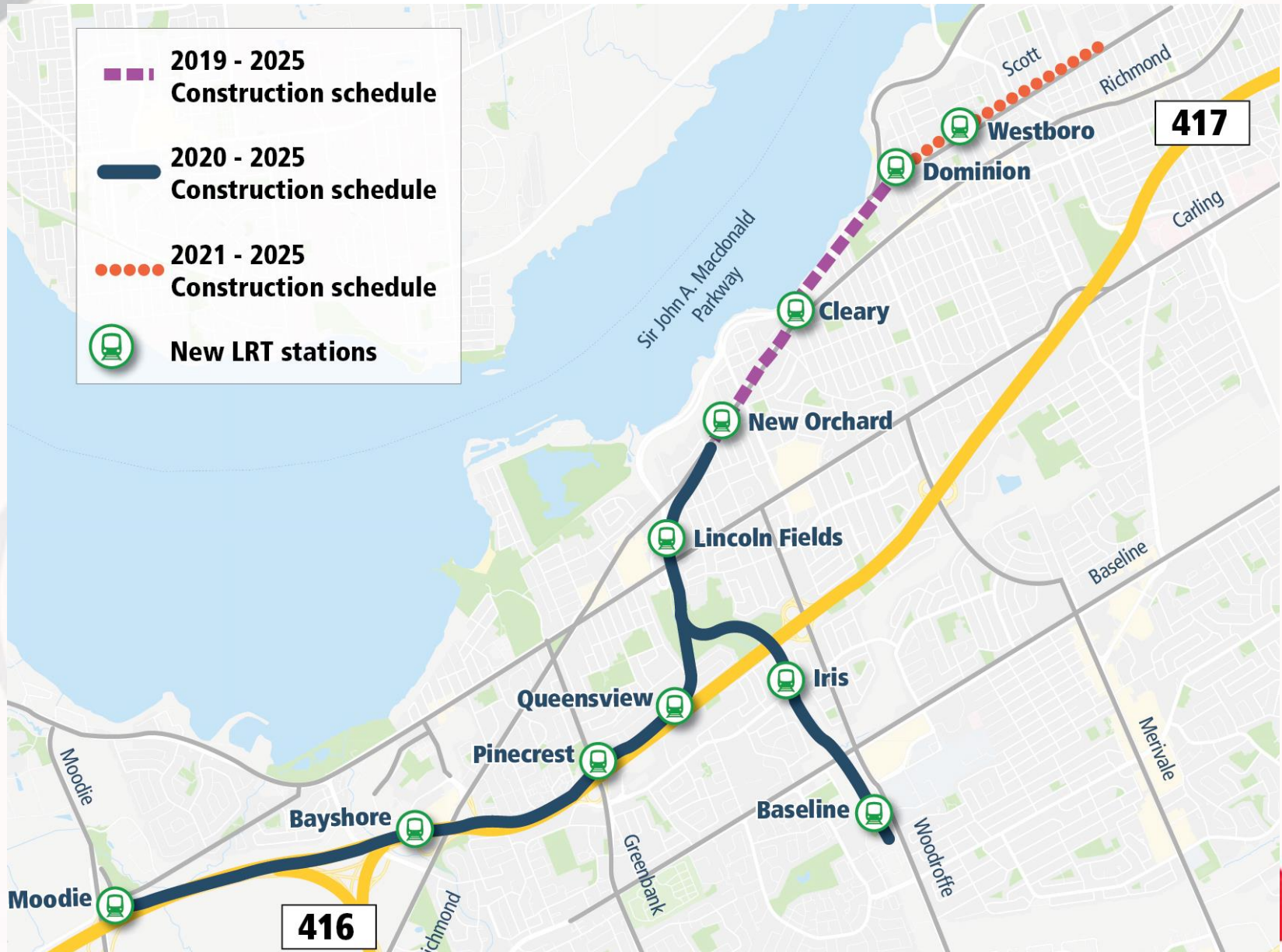
O-Train West Design Update (*Cont'd*)

- The City is reviewing **final designs** for the following elements:
 - Highway 417 Interchanges (Moodie Drive, Holly Acres Road and Pinecrest Road);
 - Roadway works;
 - Light Maintenance and Storage Facility (LMSF) overall design;
 - Queensview, Moodie, Pinecrest and Baseline stations;
 - Utility works;
 - Several Culverts along the alignment;
 - System Communications; and,
 - Traction Power Substation – LMSF.

O-Train West Design Update (*Cont'd*)

- The City is reviewing **preliminary designs** for the following project elements:
 - Traction Power Substations – West Alignment;
 - Communications – Systemwide;
 - Train Control and Signaling;
 - Traction Power – Systemwide;
 - Overhead Catenary System – Systemwide;
 - Track and Guideway Overall Design, including LMSF;
 - Walls along entire alignment;
 - Connaught Tunnel;
 - Pinecrest Open Trench; and,
 - Lincoln Fields Station.

O-Train West Construction



Moodie Light Maintenance & Storage Facility



Moodie Light Maintenance & Storage Facility (Cont'd)

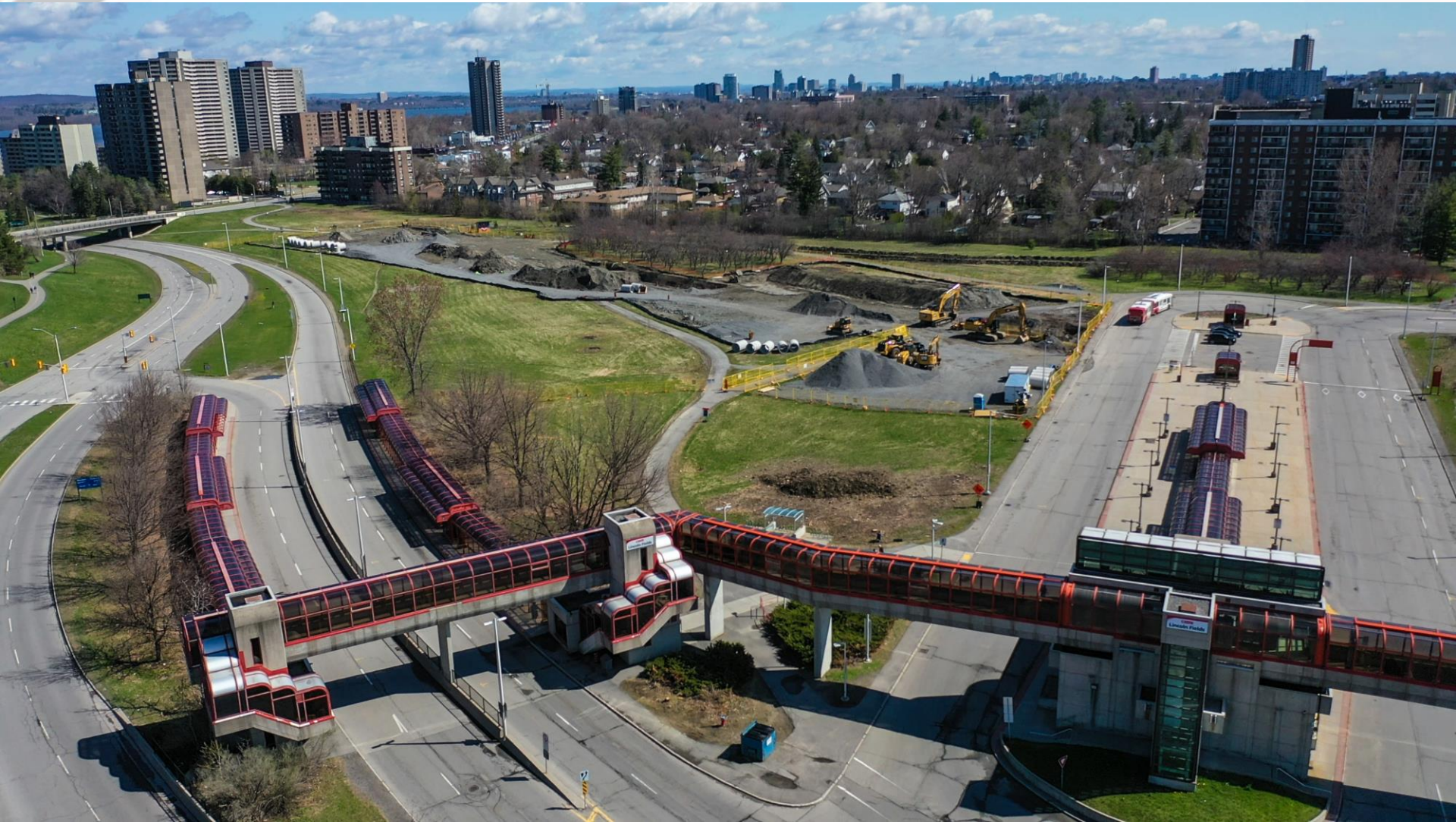


Iris Station



Drilling has commenced in the fenced off area, north of Iris Street. Piers are being installed to support culvert excavation.

Lincoln Fields



Upcoming Work

- Eastbound Sir John A. Macdonald temporary lane construction;
- Sidewalk construction between Woodroffe Avenue and Lockhart Avenue;
- Lincoln Fields storm sewer relocation to continue;
- Hydro Line relocation and culvert construction at Iris Street;
- Baseline Bus Operator Building (BOB) site preparation;
- Excavation for Pinecrest Creek Pond;

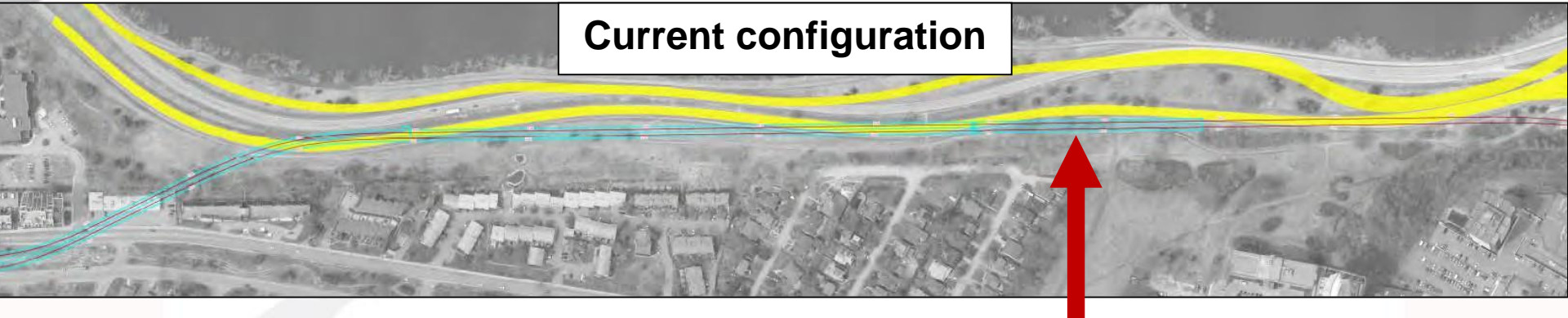
Upcoming Work (*Cont'd*)

- Lincoln Fields Flyover foundation work to begins;
- Connaught Tunnel preparatory works;
- Relocation of hydro lines along Corkstown Road; and,
- Moodie Light Maintenance and Storage Facility early site work to continue (fencing, access road, topsoil stripping, pre-loading etc.)

Sir John A. Macdonald Realignment



Sir John A Macdonald Eastbound Lane Reconfiguration



Current configuration

Future cut and cover tunnel.



Future configuration

Future temporary eastbound lanes.

O-Train West Cut and Cover Tunnels



Parkway Tunnel

Connaught Tunnel & Pinecrest Trench

Connaught Cut and Cover Tunnel



Traffic & Mobility Impacts

Location	Timeline	Traffic & Mobility Impacts
Sir John A. Macdonald Parkway	Spring to late Fall 2020	Sir John A. MacDonald Parkway to be realigned during off peak hours. Minimal impact expected to traffic.
Richmond Road (Cleary Avenue to New Orchard Avenue)	Spring 2020 – Fall 2023	Multiple off-peak lane closure and Intersection reconfigurations
Carling Avenue (Lincoln Fields)	Late Summer to Early Fall	Traffic impacts that will reduce Carling westbound to two lanes for sewer work. Lane shifting is expected at/near the intersection.
Iris Street at Transitway	Spring 2020 – Late Fall 2020	Multiple lane shifts and Intersection reconfigurations
Iris and Navaho	June to mid July	Traffic impacts expected as a result of watermain work
Baseline and Cobden	Spring - Late summer 2020	Watermain installation will result in lane impacts.
Moodie Drive (Highway 417)	Spring 2020 – Late Fall 2020	Lane closures expected during off peak periods

Status Of Stage 2 Alstom Citadis Vehicles

Of the 38 Stage 2 Alstom Citadis Vehicles:

- 21 vehicles are awaiting production;
- 6 vehicles in production;
- 7 vehicles are undergoing testing;
- 2 vehicles are in acceptance; and,
- 2 vehicles have been accepted;



O-Train South Vehicles

Stadler FLIRT - Livery



O-Train South Vehicles

Stadler FLIRT – Livery (Cont'd)



Connectivity Enhancement Study

- Building on the Stage 2 LRT Connectivity Study completed in 2017, the City of Ottawa and Alta Planning and Design are leading a review of Stage 2 station connectivity;
- This team will be proposing additional measures to enhance connectivity for all modes of transportation and will be rolled out for public comment in three segments:
 - Confederation Line East;
 - Trillium Line; and,
 - Confederation Line West.
- Feedback that is out of Stage 2 scope will be provided to Transportation Planning for consideration in the Transportation Master Plan update.

Stakeholder Engagement

- As a result of the intensification of COVID-19 in mid-March, all in-person public meetings transitioned to digital formats.
- Staff continue to engage with Councillors and community stakeholders as work progresses by sharing information through digital tools such as the project website, newsletter and quarterly progress videos.
- Stakeholders are encouraged to subscribe to the Stage 2 newsletter via ottawa.ca/stage2 to receive project updates and area specific eNotices.

COVID-19





Questions?

2