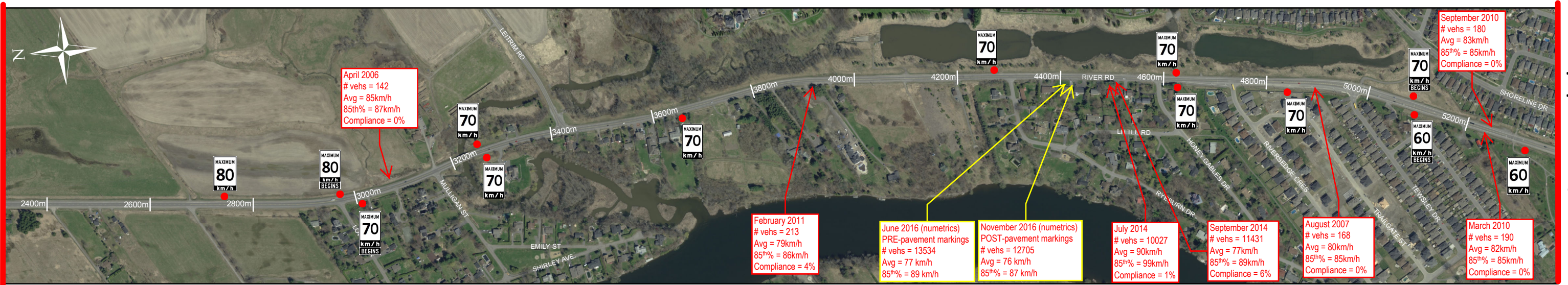


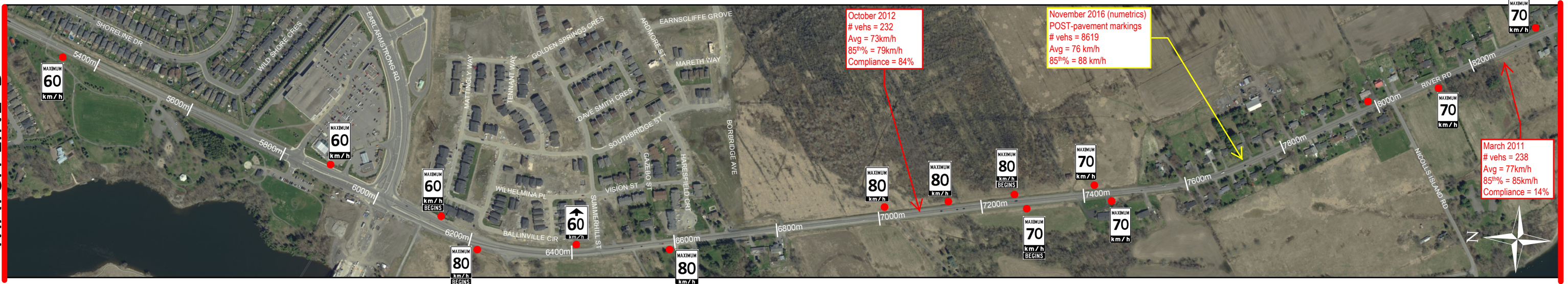


MATCH LINE 'A'



MATCH LINE 'A'

MATCH LINE 'B'



MATCH LINE 'B'

MATCH LINE 'C'

**LEGEND**  
7500m | station lines throughout River Road corridor starting at Limebank Road heading south  
● | speed limit signage as per site inspection November 2015

**NOTES**  
- speed limit signage along River Road between Limebank Road and Rideau River Road (southernmost extent of the City of Ottawa)  
- signage locations are approximate and identified via field review

**RIVER ROAD SPEED ZONE REVIEW**  
**SPEED LIMIT SIGNAGE**  
DRAWN BY: CM  
DATE: MAY 15, 2017  
SCALE: 1:7,500

