

# 2018 ANNUAL REPORT

Ottawa Police Services Board  
24 June 2019



OTTAWA POLICE SERVICE  
SERVICE DE POLICE D'OTTAWA

*A Trusted Partner in Community Safety  
Un partenaire fiable de la sécurité communautaire*

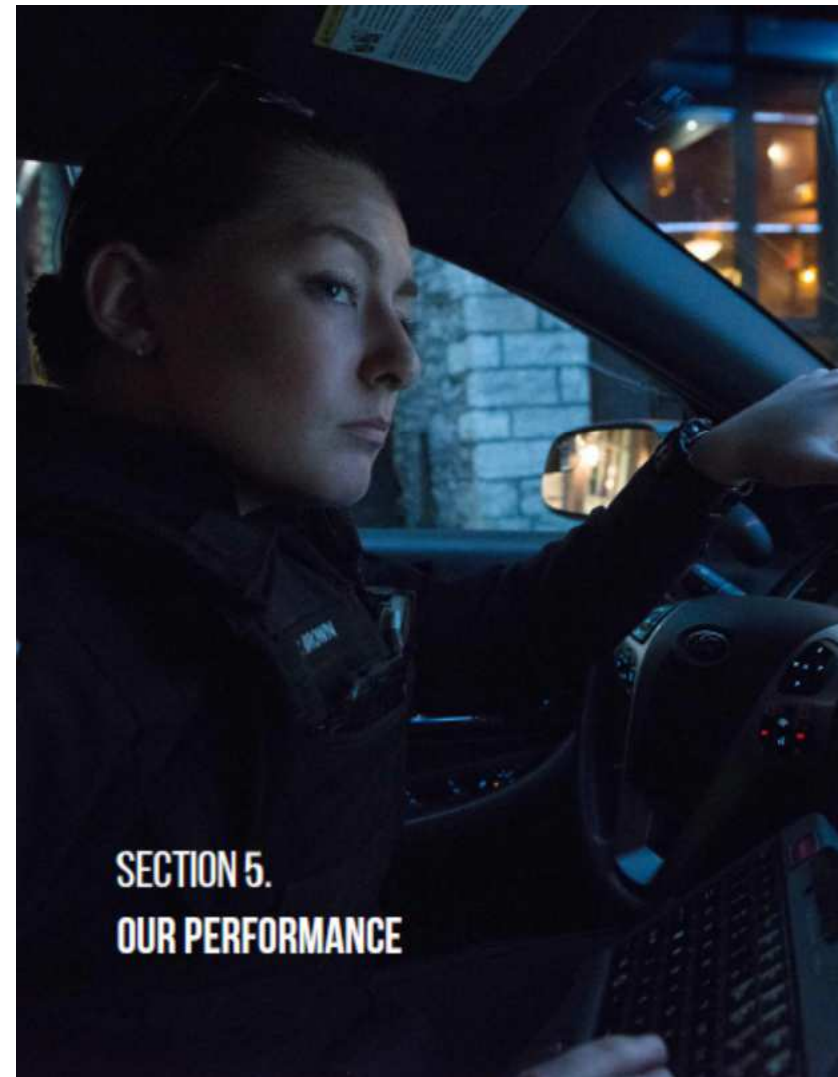
[ottawapolice.ca](http://ottawapolice.ca)

# OUR PERFORMANCE



## AI-011 Annual reporting:

- Assistance to victims
- Crime and clearance rates
- Calls for service
- Road safety
- Public complaints
- Cost of service
- Community satisfaction



# CRIME STATISTICS



## CRIME RATE

2017: 3,519

2018: 3,926

+12%

## REPORTED CRIME

2017: 34,452

2018: 38,921

+13%

## CRIME SEVERITY INDEX

2017: 50

2018: 54

+8%

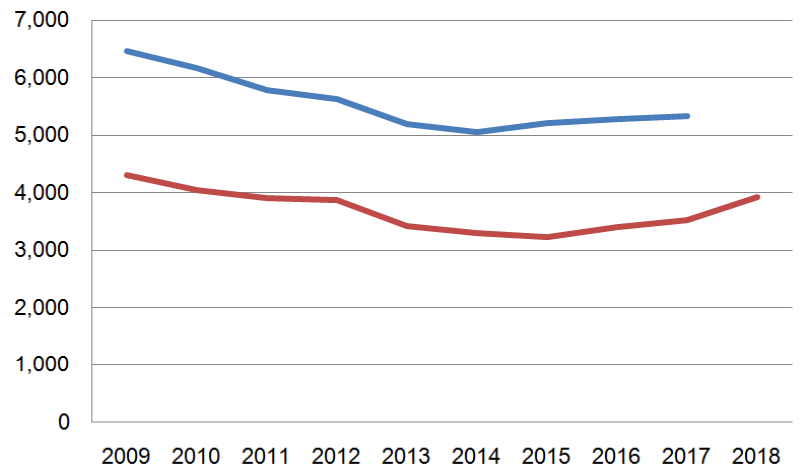
## CLEARANCE RATE %

2017: 37%

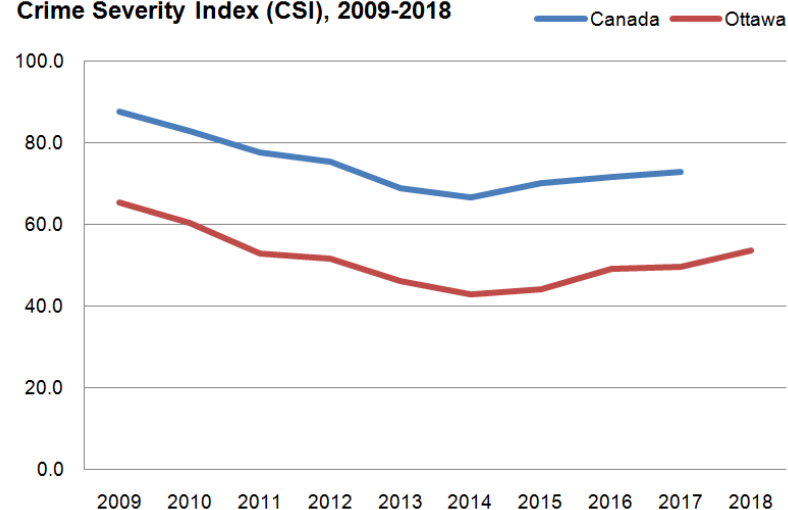
2018: 35%

-2  
pct. pt.

Police Reported Crime Rate, 2009-2018



Crime Severity Index (CSI), 2009-2018



## ARRESTS

2017: 9,500

2018: 10,150

+7%

## ADULTS CHARGED

2017: 11,600

2018: 12,400

+7%

## YOUTH CHARGED

2017: 1,850

2018: 1,500

-17%

## GUNS SEIZED

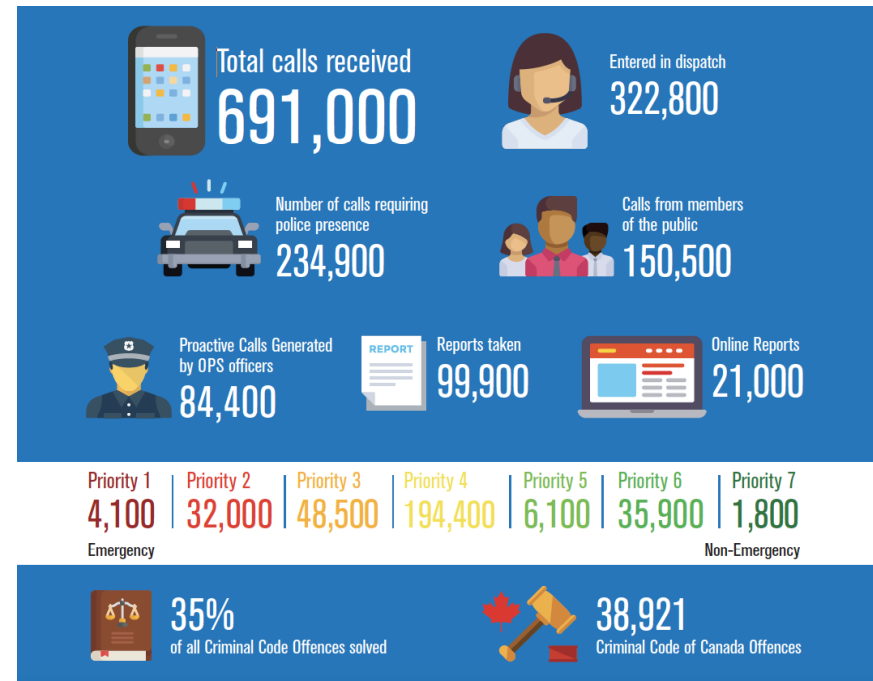
2017: 82

2018: 68

-17%

# DEMAND FOR SERVICE

- Average **340,000** service requests annually (incl. online reporting).
- Total number of **calls increased**
- Service time **decreased**
- **P1 Response Performance 94%**



## TOTAL DISPATCH CALLS

2017: 312,600

2018: 322,800

+3%

## P1 EMERGENCY CALLS

2017: 3,900

2018: 4,100

+5%

## P1 RESPONSE PERFORMANCE

2017: 95%

2018: 94%

-1  
pct. pt.

## SERVICE TIME (HRS)

2017: 287,200

2018: 278,400

-3%

# MAKING A DIFFERENCE



- **Highlights:**
  - Community Policing
  - Street Violence
  - Violence Against Women
  - Traffic & Road Safety





# OUR PEOPLE



- **Highlights:**
  - Member Demographics
  - Member Development
  - Member Wellness



# PART OF OUR COMMUNITY



- **Highlights:**
  - Community Equity Council (CEC)
  - Building partnerships
  - Ottawa Police Gala



# CONCLUSION



OTTAWA POLICE SERVICE  
SERVICE DE POLICE D'OTTAWA

*A Trusted Partner in Community Safety*  
*Un partenaire fiable de la sécurité communautaire*

[ottawapolice.ca](http://ottawapolice.ca)