

SUBJECT TO THE CONDITIONS, IF ANY, SET FORTH IN OUR LETTER DATED.....THIS DRAFT PLAN IS APPROVED BY THE CITY OF OTTAWA UNDER SECTION 51 OF THE PLANNING ACT THIS ..6..... DAY OF ..March..... 2020.

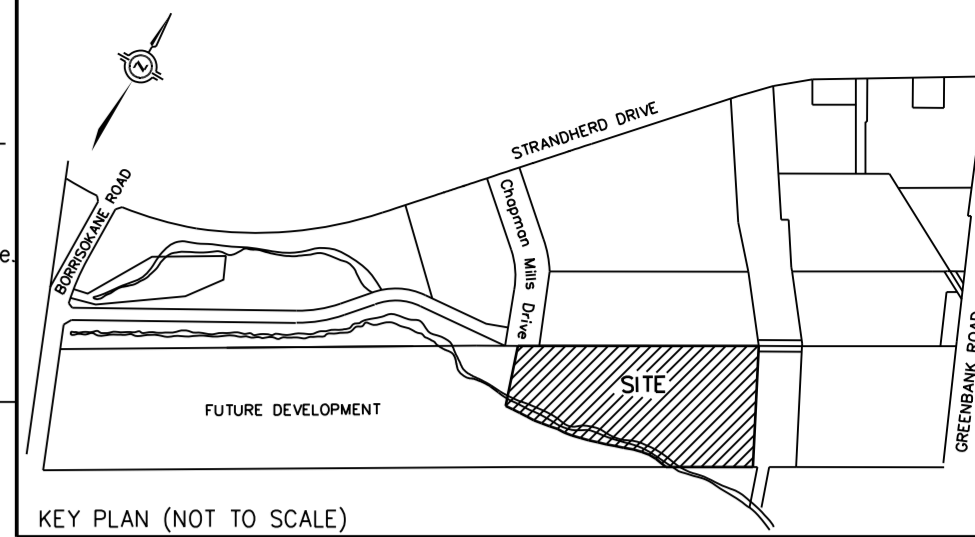
Lily Xu

LILY XU, MCP, RPP, MANAGER
DEVELOPMENT REVIEW SOUTH
PLANNING, INFRASTRUCTURE AND ECONOMIC DEVELOPMENT DEPARTMENT,
CITY OF OTTAWA

APPROVED
By Lily Xu at 10:08 am, Mar 06, 2020

ADDITIONAL INFORMATION
As required under section 51(17) of the Planning Act R.S.O. 2001

(a)(b)(e)(f)(g)(j) and (l) - As shown on this Plan.
(c) - As shown on this Draft and Key Plan
(d) - Land to be used in accordance with the Schedule of Land Use
(h)(k) - Full Municipal Services
(i) - Offshore Marine Deposits of clay, silty clay and silt, Bedrock Ottawa Formation, limestone



DRAFT PLAN OF SUBDIVISION OF
PART OF LOT 14
CONCESSION 3 (RIDEAU FRONT)
GEOGRAPHIC TOWNSHIP OF NEPEAN
NOW IN THE
CITY OF OTTAWA

SCALE 1 : 1000
METRIC DISTANCES AND/OR COORDINATES SHOWN ON THIS PLAN ARE IN METRES AND CAN BE CONVERTED TO FEET BY DIVIDING BY 0.3048.

Schedule of Land Use			
Land Use	Lots/Blocks	Units	Area
Singles Detached	7 to 12, 15 to 20, 22, 24, 26, 29 and 30		3.74 ha.
Rear Lane Townhome	1 to 4, 13, 14, 27 and 28		1.10 ha.
Park	5		0.46 ha.
SWM Block	21		0.04 ha.
Streets			3.77 ha.
Lanes			0.32 ha.
Reserves	31 and 32		0.00 ha.
Vista/Walkway	23		0.01 ha.
Natural Heritage System	25		1.72 ha.
Future Park	6		0.21 ha.
Total			11.37 ha.

OWNER'S CERTIFICATE
BARRHAVEN CONSERVANCY EAST INC., BEING THE REGISTERED OWNER OF THE SUBJECT LANDS HEREBY AUTHORIZES J. D. BARNES LIMITED TO PREPARE AND SUBMIT THIS DRAFT PLAN OF SUBDIVISION FOR APPROVAL.

March 4, 2020
DATE

Frank Cairo
FRANK CAIRO
PRESIDENT
(I HAVE THE AUTHORITY TO BIND THE CORPORATION)

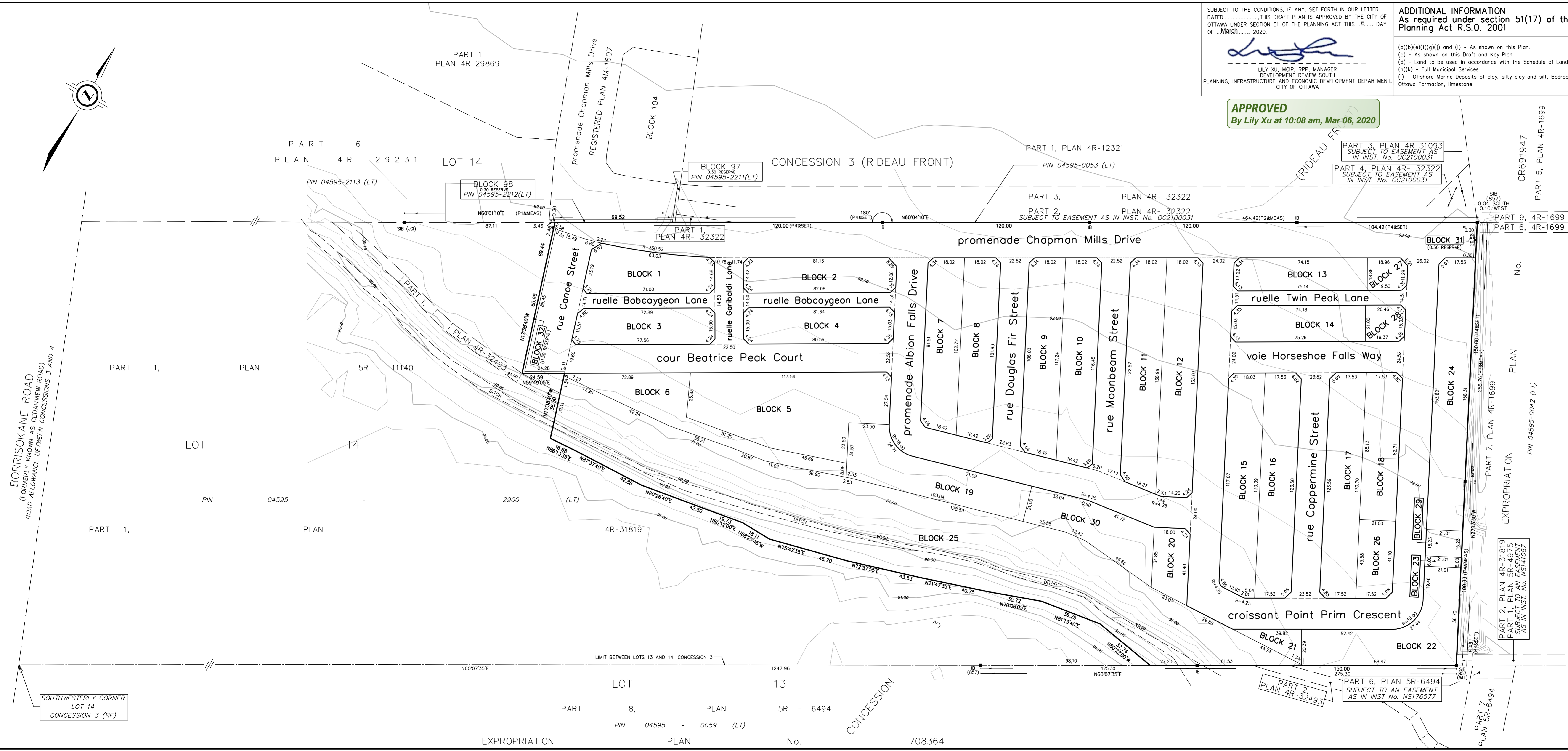
SURVEYOR'S CERTIFICATE
I HEREBY CERTIFY THAT THE BOUNDARIES OF THE LAND TO BE SUBDIVIDED ARE CORRECTLY SHOWN.

MARCH 4, 2020
DATE

C. M. Fox
C. M. FOX
ONTARIO LAND SURVEYOR

J.D.BARNES LIMITED
LAND INFORMATION SPECIALISTS
2430 DON REID DRIVE, SUITE 204, OTTAWA, ON K1H 1E1
T: (613) 731-7244 F: (613) 731-8955 www.jdbarnes.com

DRAWN BY: CE/RA CHECKED BY: CF REFERENCE NO.: 16-10-127-00
FILE: G:\16-10-127\00\Drawings\Draft Plan\Phase 1\16-10-127-00\Drawings\16-10-127-00.dwg DATE: 2020.03.04 10:08 AM PLOTTED: 3/4/2020



SOUTHWESTERLY CORNER LOT 14 CONCESSION 3 (RF)

EXPROPRIATION PLAN No. 708364