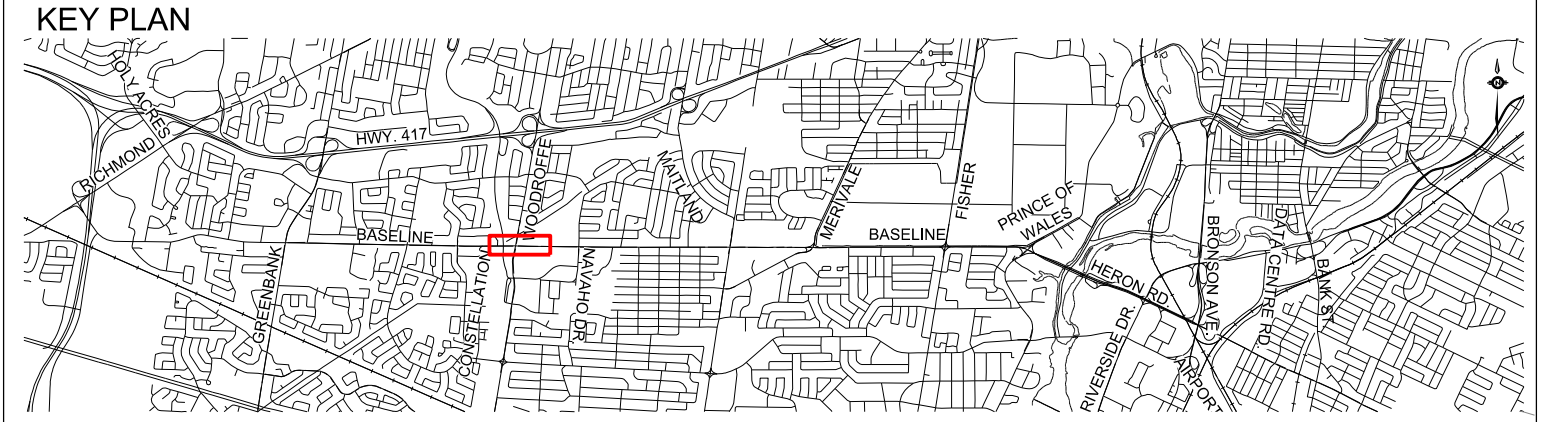


NOTES:



- LEGEND:**
- TRANSIT LANES
  - TRANSIT STATION
  - BOULEVARD
  - CYCLE TRACK
  - SIDEWALK
  - MULTI-USE PATHWAY
  - EXISTING RIGHT-OF-WAY
  - PROPOSED RIGHT-OF-WAY

**PARSONS**

Date: JANUARY 2017	Designed By: D.H., R.C.	Drawn By: M.M.R.
Project Manager: D.H.	Discipline Engineer:	Checked By:

Scale: 0m 5 10 25 50 HORIZONTAL

CAD File Name: TO3097TOF-GRD-29.DGN Plot Date: 12/20/2016

**Ottawa**

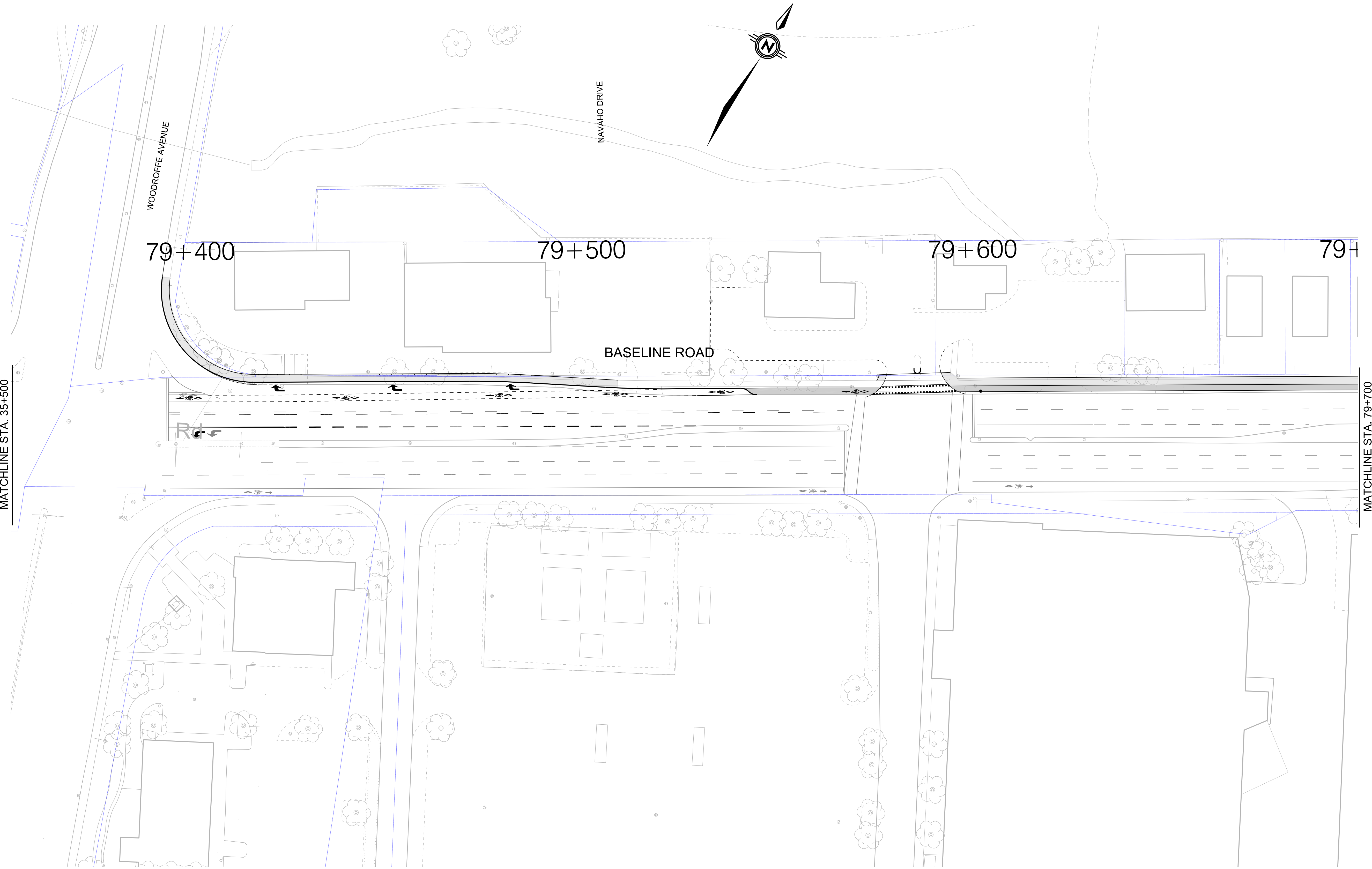
Baseline Road Bus Rapid Transit Corridor Planning And EA Study  
Cycling Facility Between Centrepointe and Navaho

Baseline Road Sta.34+200 TO Sta.35+500

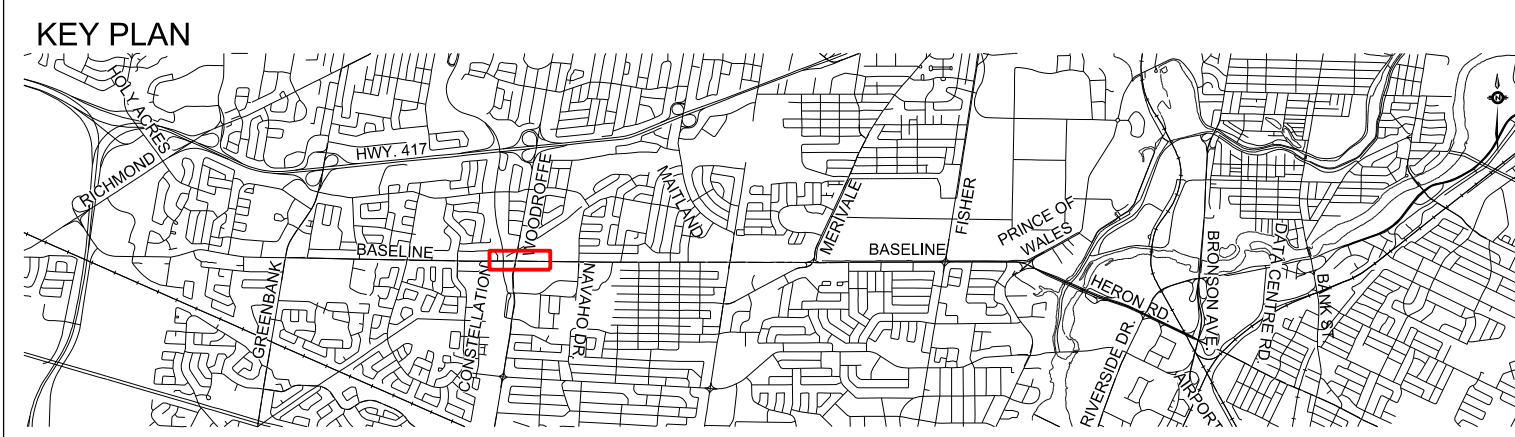
Drawings No.: TO3097TOF-GRD-29	Revision: 00	Sheet No.: 29
--------------------------------	--------------	---------------

CONT'D ON SHEET NO. 26  
MATCHLINE STA. 35+500

MATCHLINE STA. 79+700  
CONT'D ON SHEET NO. 28



NOTES:



**LEGEND:**

	TRANSIT LANES		EXISTING RIGHT-OF-WAY
	TRANSIT STATION		PROPOSED RIGHT-OF-WAY
	BOULEVARD		
	CYCLE TRACK		
	SIDEWALK		
	MULTI-USE PATHWAY		

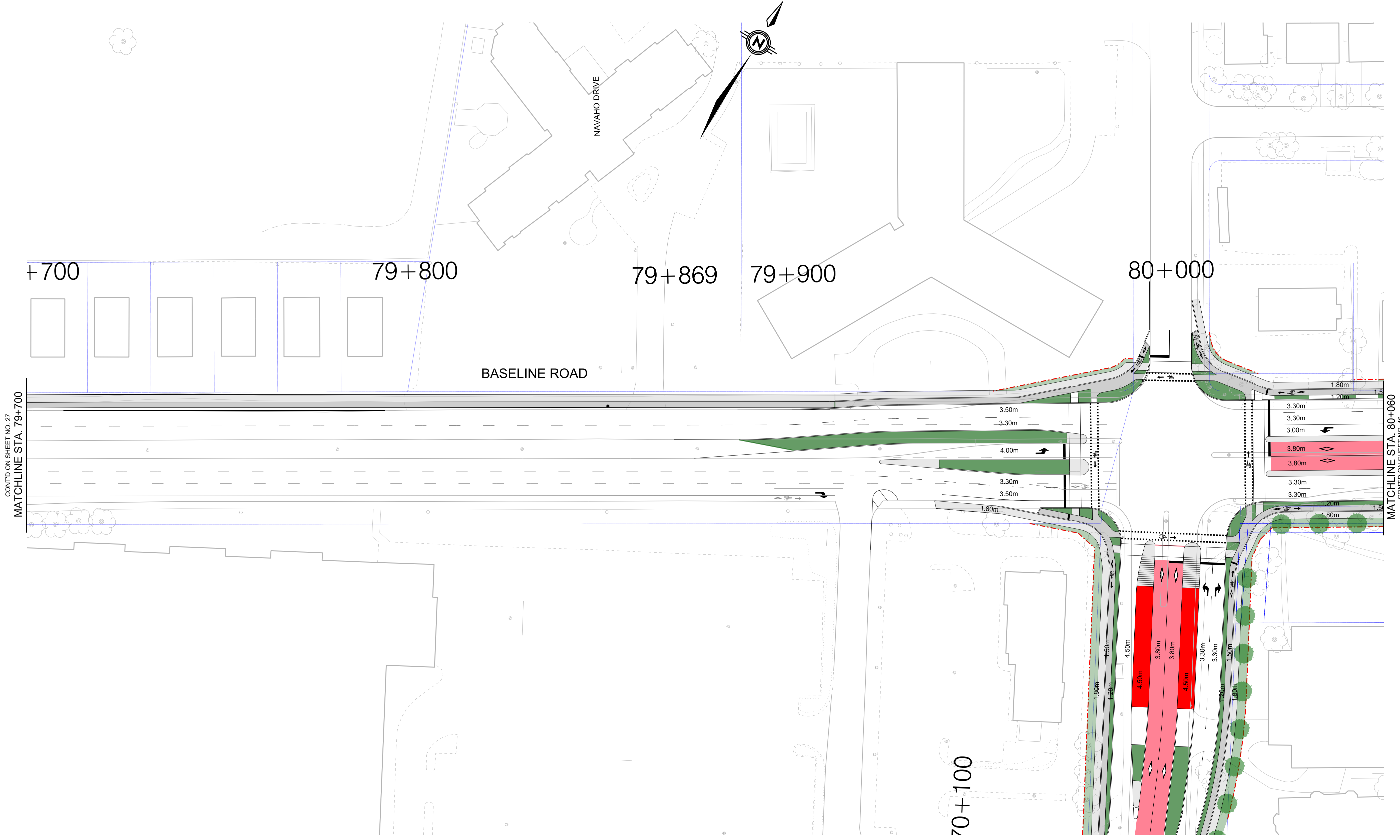
**PARSONS**

Date: JANUARY 2017	Designed By: D.H., R.C.	Drawn By: M.M.R.
Project Manager: D.H.	Discipline Engineer:	Checked By:
Scale: 0m 5 10 25 50 HORIZONTAL		
CAD File Name: TO3097TOF-GRD-30.DGN	Plot Date: 12/20/2016	Drawings No.: TO3097TOF-GRD-30



Baseline Road Bus Rapid Transit  
Corridor Planning And EA Study  
Cycling Facility Between Centrepointe and Navaho

Baseline Road Sta.35+500 TO Sta.79+700

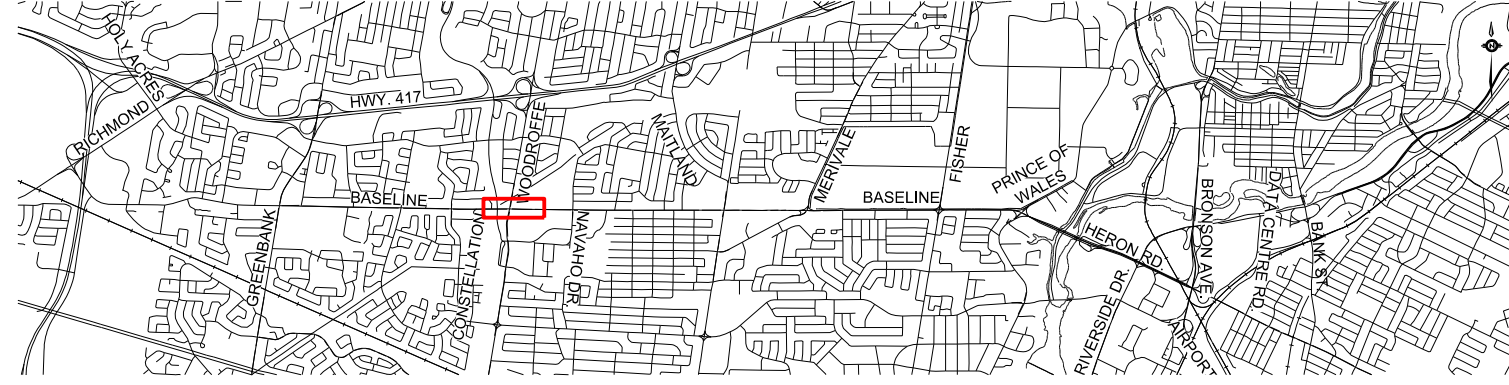


CONT'D ON SHEET NO. 27  
MATCHLINE STA. 79+700

MATCHLINE STA. 80+060  
CONT'D ON SHEET NO. 16

NOTES:

KEY PLAN



LEGEND:

- TRANSIT LANES
- TRANSIT STATION
- BOULEVARD
- CYCLE TRACK
- SIDEWALK
- MULTI-USE PATHWAY
- EXISTING RIGHT-OF-WAY
- PROPOSED RIGHT-OF-WAY

**PARSONS**

Date: JANUARY 2017	Designed By: D.H., R.C.	Drawn By: M.M.R.
Project Manager: D.H.	Discipline Engineer:	Checked By:
Scale: 0m 10 20 50 100 HORIZONTAL		
CAD File Name: TO3097TOF-GRD-31.DGN	Plot Date: 12/20/2016	Drawings No.: TO3097TOF-GRD-31



Baseline Road Bus Rapid Transit  
Corridor Planning And EA Study  
Cycling Facility Between Centrepointe and Navaho

Baseline Road Sta.79+700 TO Sta.80+060