

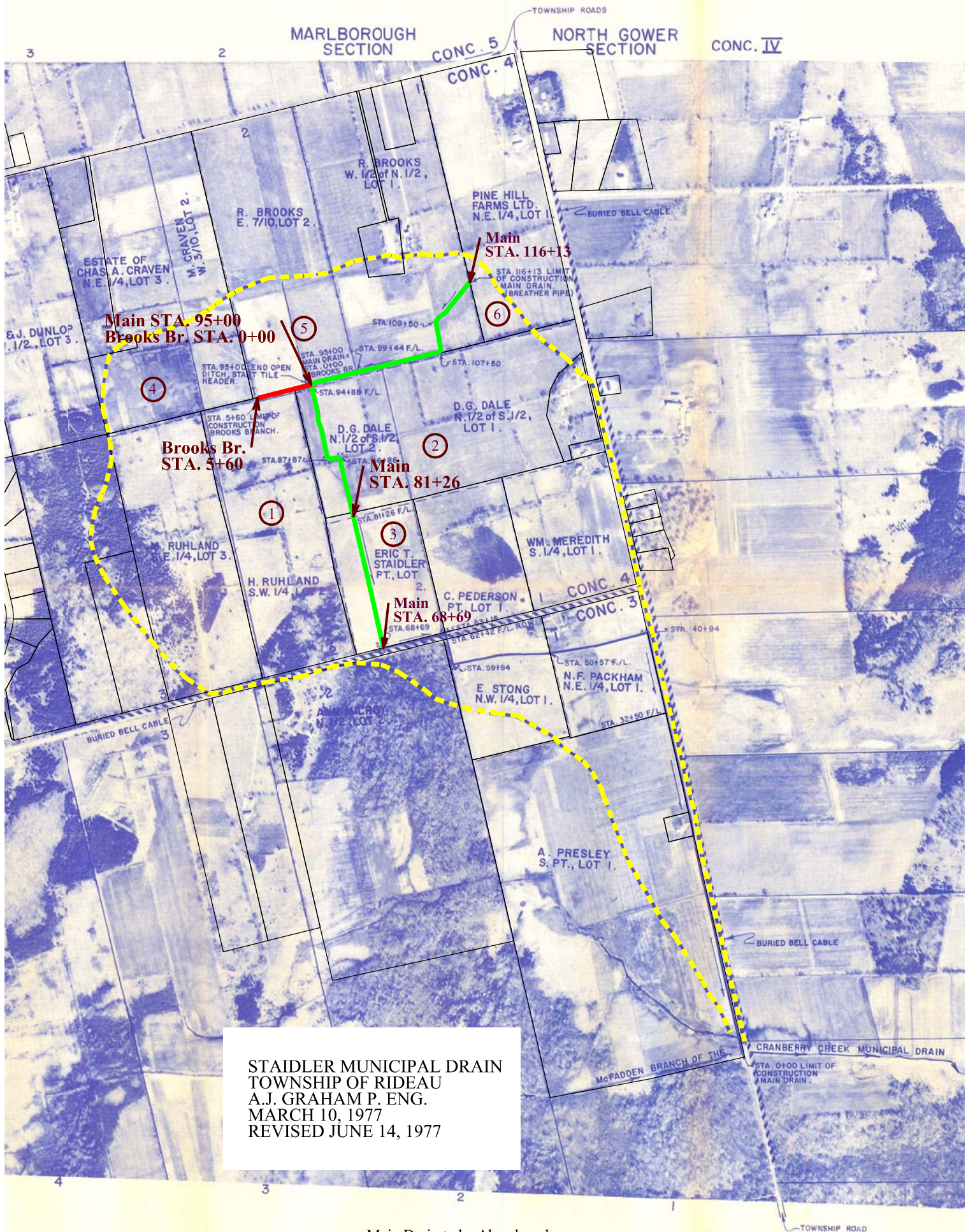
TOWNSHIP OF RIDEAU

MARLBOROUGH SECTION

NORTH GOWER SECTION

CONC. 5
CONC. 4

CONC. IV



STAIHLER MUNICIPAL DRAIN
TOWNSHIP OF RIDEAU
A.J. GRAHAM P. ENG.
MARCH 10, 1977
REVISED JUNE 14, 1977

- Main Drain to be Abandoned
- Brooks Branch to be Abandoned