

BY-LAW NO. 2017 - 176

A by-law to provide for the making of an application for approval to expropriate property in the City of Ottawa for the purposes of the Stage 2 Ottawa Light Rail Transit System project, as more particularly described in Schedules "A", "A-1", "B", "B-1", "C" and "C-1" attached hereto.

WHEREAS the City of Ottawa requires property described in Schedules "A", "A-1", "B", "B-1", "C" and "C-1" attached hereto for the purposes of the Stage 2 Ottawa Light Rail Transit System project (the "Stage 2 LRT") including, but not limited to, for the purposes of facilitating the construction, operation and maintenance of light rail infrastructure, tunnel guideway corridors, tunnel portals, at-grade guideway corridors, guideways, stations, station entrances and station to surface access points, platforms, multi-use pathways, bridges and bridge approaches and including temporary easements, varying in duration from 36 to 61 months as described in Schedules "A", "B" and "C" hereto, for purposes including, but not limited to, construction of station entrances, traffic management and detours, storage of excavated materials and construction materials and equipment, temporary power supply and to enter on the lands with all vehicles, machinery, workmen and material for construction, grading and relocation of utilities and for construction of berms, walking paths, multi-use pathways, fences, retaining walls, landscaping features and all other improvements and works ancillary to the Stage 2 LRT;

AND WHEREAS pursuant to Section 6(1) of the *Municipal Act, 2001, S.O. 2001, c. 25*, as amended, the power of a municipality to acquire land under this or any other Act includes the power to expropriate land in accordance with the *Expropriations Act, R.S.O. 1990, c.E.26*, as amended (hereinafter referred to as the "Expropriations Act");

AND WHEREAS pursuant to Section 4 of the Expropriations Act, an expropriating authority, in this case, the City of Ottawa, shall not expropriate land without the approval of the approving authority, in this case, the Council of the City of Ottawa;

AND WHEREAS the City of Ottawa shall conduct the expropriation in accordance with the Expropriations Act.

NOW THEREFORE the Council of the City of Ottawa hereby enacts as follows:

1. THAT the Council of the City of Ottawa hereby approves the making of an application for approval to expropriate land by the City of Ottawa, in respect of the property described in Schedules "A", "A-1", "B", "B-1", "C" and "C-1", attached hereto.
2. THAT the Mayor, the City Clerk, and the Director of Corporate Real Estate Office, or any one of them are hereby authorized to execute, on behalf of the City of

Ottawa, an Application for Approval to Expropriate the property described in Schedules "A", "A-1", "B", "B-1", "C" and "C-1" attached hereto.

3. THAT the Mayor, the City Clerk, and the Director of Corporate Real Estate Office, or any one of them are hereby authorized to execute, on behalf of the City of Ottawa, Notices of Application for Approval to Expropriate Land for the property described in Schedules "A", "A-1", "B", "B-1", "C" and "C-1" attached hereto and that such Notices be served and published, as required by the Expropriations Act.

4. THAT, in the event an owner or registered owner requests a hearing of necessity, and a report of the inquiry officer is issued, the report of the inquiry officer shall come before Council of the City of Ottawa for consideration.

5. THAT the officers and authorized agents of the City of Ottawa be and they are hereby otherwise authorized and directed to do all things required arising from the authorizations provided for by this by-law.

6. THAT this by-law includes Schedules "A", "A-1", "B", "B-1", "C" and "C-1" attached hereto and these Schedules form part of this By-law.

7. THAT this by-law comes into force on the day it is passed.

ENACTED and PASSED this 10th day of May, 2017.

CITY CLERK

MAYOR

SCHEDULE "A"

Confederation Line – West

All right, title and interest in the following lands:

1. Part of PIN 03944-0614 (LT), PART LOT 20, CONCESSION 2 OF, PART 11, PLAN 4R268 OTTAWA/NEPEAN TOWNSHIP designated as Parcel 1 on drawing 18689-PRP_014b.dgn
2. Part of PIN 03957-0526 (LT), PART LOT 329, PLAN 372212, PART 3 AND 4, 4R1473, SUBJECT TO INTERESTS, IF ANY, AS IN CR384866 AND CR369486, OTTAWA/NEPEAN designated as Parcel 1 on drawing 18689-PRP_015b.dgn
3. Part of PIN 03957-0524 (LT), LOT 326, PLAN 372212; SUBJECT TO INTERESTS, IF ANY, AS IN CR384866 AND CR369486; OTTAWA/NEPEAN designated as Parcel 1 on drawing 18689-PRP_016b.dgn
4. Part of PIN 03957-0523 (LT), LOT 325, PLAN 372212; SUBJECT TO INTERESTS, IF ANY, AS IN CR384866 AND CR369486; OTTAWA/NEPEAN designated as Parcel 5 on drawing 18689-PRP_016b.dgn
5. Part of PIN 03957-0522 (LT), LOT 324, PLAN 372212; SUBJECT TO INTERESTS, IF ANY, AS IN CR384866 & CR369486; OTTAWA/NEPEAN designated as Parcel 1 on drawing 18689-PRP_017b.dgn
6. Part of PIN 03957-0521 (LT), LOT 323, PLAN 372212; SUBJECT TO INTERESTS, IF ANY, AS IN CR384866 AND CR369486; OTTAWA/NEPEAN designated as Parcel 2 on drawing 18689-PRP_017b.dgn
7. Part of PIN 03957-0520 (LT), PART LOT 322, PLAN 372212, AS IN N512074; SUBJECT TO INTERESTS, IF ANY, AS IN CR384866 AND CR369486; OTTAWA/NEPEAN designated as Parcel 3 on drawing 18689-PRP_017b.dgn
8. Part of PIN 03957-0519 (LT), PART LOT 321, PLAN 372212, AS IN N512074; SUBJECT TO INTEREST, IF ANY, AS IN CR384866 AND CR369486; OTTAWA/NEPEAN designated as Parcel 4 on drawing 18689-PRP_017b.dgn
9. All of PIN 04282-0677 (LT), PART LOT 24, CONCESSION 1 OF, PARTS 2 AND 3, 5R12409; OTTAWA/NEPEAN designated as Parcel 1 on drawing 18689-PRP_018a.dgn
10. All of PIN 04751-0121 (LT), PART OF LOT 27, CONCESSION 1 (OTTAWA FRONT) NEPEAN, BEING PARTS 1 AND 2 PLAN 5R10438; CITY OF OTTAWA designated as Parcel 1 on drawing 18689-PRP_055b.dgn

11. Part of PINs 15260-0001 (LT) through to 15260-0097 (LT) inclusive, being part of the common elements on CARLETON CONDOMINIUM PLAN NO. 260; PART LOT 27, CONCESSION 1 OF, PART 1 PLAN 4R4562, AS IN SCHEDULE 'A' OF DECLARATION LT389316; OTTAWA designated as Parcel 1 on drawing 18689-PRP_56a.dgn
12. Part of PINs 15168-0001 (LT) through to PIN 15168-0038 (LT) inclusive, being part of the common elements on CARLETON CONDOMINIUM PLAN NO. 168; PART BLOCK 104, PLAN 305, PART 1 4R2371, AS IN SCHEDULE 'A' OF DECLARATION LT212416, AMENDED BY LT291824; OTTAWA, SUBJECT TO AN EASEMENT IN FAVOUR OF BELL CANADA OVER PART 1 PLAN 4R16200 AS IN OC27304, designated as Parcel 1 on 18689-PRP_076a.dgn

An estate, right or interest, for a limited time in the nature of a permanent easement in the following lands:

13. Part of PIN 03957-0391 (LT), LOT 1039, PLAN 413452; SUBJECT TO INTEREST, IF ANY, IN CR369486, CR384866; SUBJECT TO CR414377, CR430760E; OTTAWA/NEPEAN; SUBJECT TO EXECUTION 95-005519, IF ENFORCEABLE designated as Parcel 1 on drawing 18689-PRP_093.dgn
14. Part of PIN 03957-0311 (LT), LOT 970, PLAN 413452; SUBJECT TO INTEREST, IF ANY, IN CR369486, CR384866; SUBJECT TO CR414377 OTTAWA/NEPEAN designated as Parcel 1 on drawing 18689-PRP_097.dgn

An estate, right or interest, for a limited time in the nature of a temporary easement for a period of sixty-one (61) months in the following lands:

15. Part of PIN 03944-0614 (LT), PART LOT 20, CONCESSION 2 OF, PART 11, PLAN 4R268 OTTAWA/NEPEAN TOWNSHIP designated as Parcel 2 on drawing 18689-PRP_014b.dgn
16. Part of PIN 03957-0526 (LT), PART LOT 329, PLAN 372212, PART 3 AND 4, 4R1473, SUBJECT TO INTERESTS, IF ANY, AS IN CR384866 AND CR369486, OTTAWA/NEPEAN designated as Parcel 2 on drawing 18689-PRP_015b.dgn
17. Part of PINs 15168-0001 (LT) through to PIN 15168-0038 (LT) inclusive, being part of the common elements on CARLETON CONDOMINIUM PLAN NO. 168; PART BLOCK 104, PLAN 305, PART 1 4R2371, AS IN SCHEDULE 'A' OF DECLARATION LT212416, AMENDED BY LT291824; OTTAWA, SUBJECT TO AN EASEMENT IN FAVOUR OF BELL CANADA OVER PART 1 PLAN 4R16200 AS IN OC27304, designated as Parcel 2 on 18689-PRP_076.dgn

An estate, right or interest, for a limited time in the nature of a temporary easement for a period of fifty-five (55) months in the following lands:

18. Part of PIN 03957-0524 (LT), LOT 326, PLAN 372212; SUBJECT TO INTERESTS, IF ANY, AS IN CR384866 AND CR369486; OTTAWA/NEPEAN designated as Parcels 2 and 3 on drawing 18689-PRP_016b.dgn
19. Part of PIN 03957-0523 (LT), LOT 325, PLAN 372212; SUBJECT TO INTERESTS, IF ANY, AS IN CR384866 AND CR369486; OTTAWA/NEPEAN designated as Parcel 4 on drawing 18689-PRP_016b.dgn
20. Part of PIN 03957-0522 (LT), LOT 324, PLAN 372212; SUBJECT TO INTERESTS, IF ANY, AS IN CR384866 & CR369486; OTTAWA/NEPEAN designated as Parcel 5 on drawing 18689-PRP_017b.dgn
21. Part of PIN 03957-0521 (LT), LOT 323, PLAN 372212; SUBJECT TO INTERESTS, IF ANY, AS IN CR384866 AND CR369486; OTTAWA/NEPEAN designated as Parcel 6 on drawing 18689-PRP_017b.dgn
22. Part of PIN 03957-0520 (LT), PART LOT 322, PLAN 372212, AS IN N512074; SUBJECT TO INTERESTS, IF ANY, AS IN CR384866 AND CR369486; OTTAWA/NEPEAN designated as Parcel 7 on drawing 18689-PRP_017b.dgn
23. Part of PIN 03957-0519 (LT), PART LOT 321, PLAN 372212, AS IN N512074; SUBJECT TO INTEREST, IF ANY, AS IN CR384866 AND CR369486; OTTAWA/NEPEAN designated as Parcel 8 on drawing 18689-PRP_017b.dgn
24. Part of PINs 15260-0001 (LT) through to 15260-0097 (LT) inclusive, being part of the common elements on CARLETON CONDOMINIUM PLAN NO. 260; PART LOT 27, CONCESSION 1 OF, PART 1 PLAN 4R4562, AS IN SCHEDULE 'A' OF DECLARATION LT389316; OTTAWA designated as Parcel 2 on drawing 18689-PRP_56a.dgn
25. Part of PIN 03957-0527 (LT), PART LOT 329, PLAN 372212, PARTS 1 AND 2, PLAN 4R1473; SUBJECT TO INTERESTS, IF ANY, AS IN CR384866 AND CR369486; OTTAWA/NEPEAN designated as Parcel 1 on drawing 18689-PRP_096a.dgn

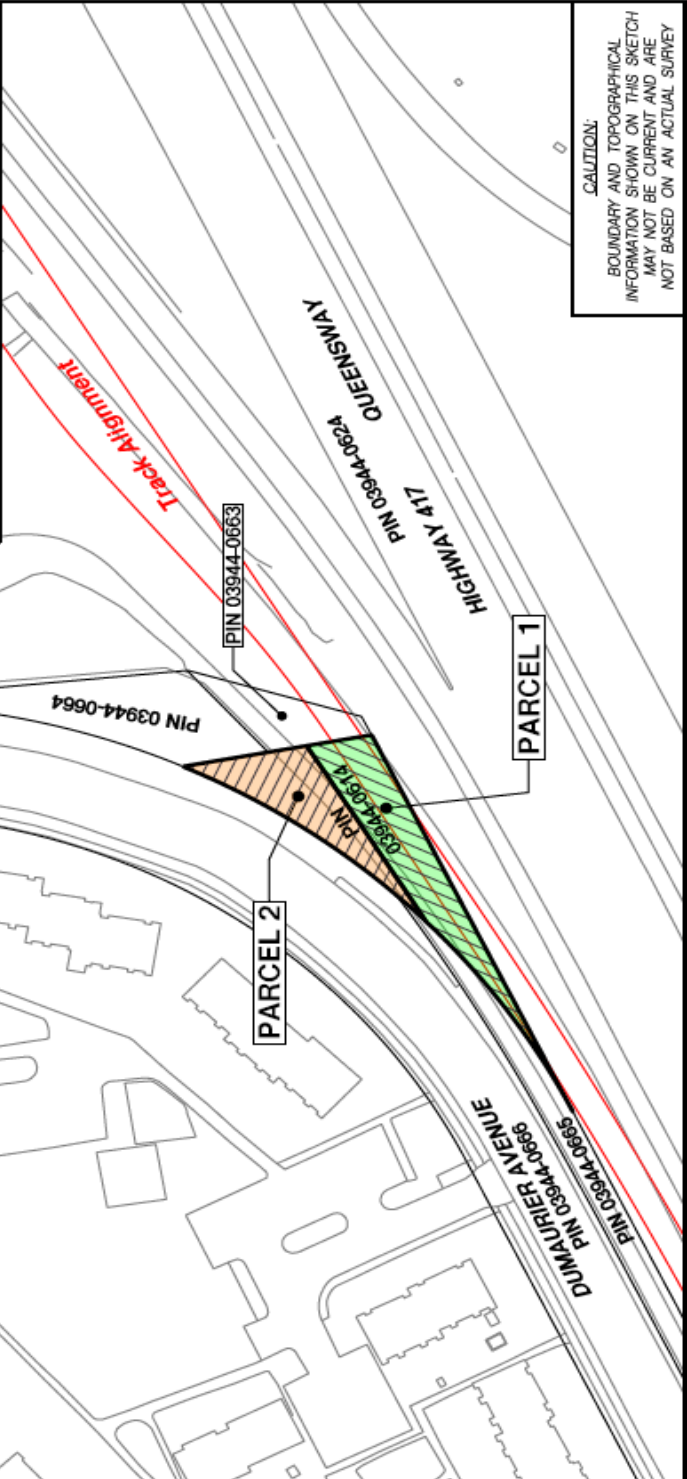
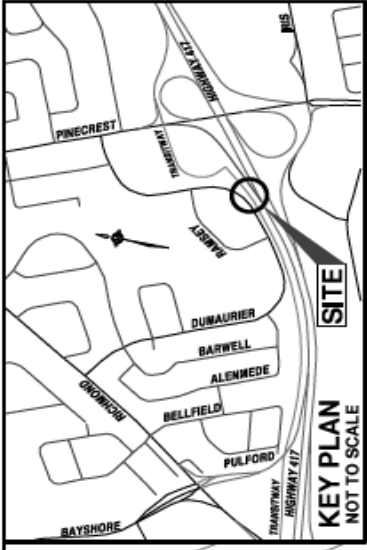
An estate, right or interest, for a limited time in the nature of a temporary easement for a period of thirty-six (36) months in the following lands:

26. Part of PIN 03957-0391 (LT), LOT 1039, PLAN 413452; SUBJECT TO INTEREST, IF ANY, IN CR369486 AND CR384866; SUBJECT TO CR414377 AND CR430760E; OTTAWA/NEPEAN; SUBJECT TO EXECUTION 95-005519, IF ENFORCEABLE, designated as Parcel 2 on drawing 18689-PRP_093.dgn

SCHEDULE "A-1"

Confederation Line - West

PARCEL	ALL OF PIN	AREA (m ²)	ACQUISITION
1	03944-0514	405	FEE SIMPLE
2		294	TEMPORARY EASEMENT

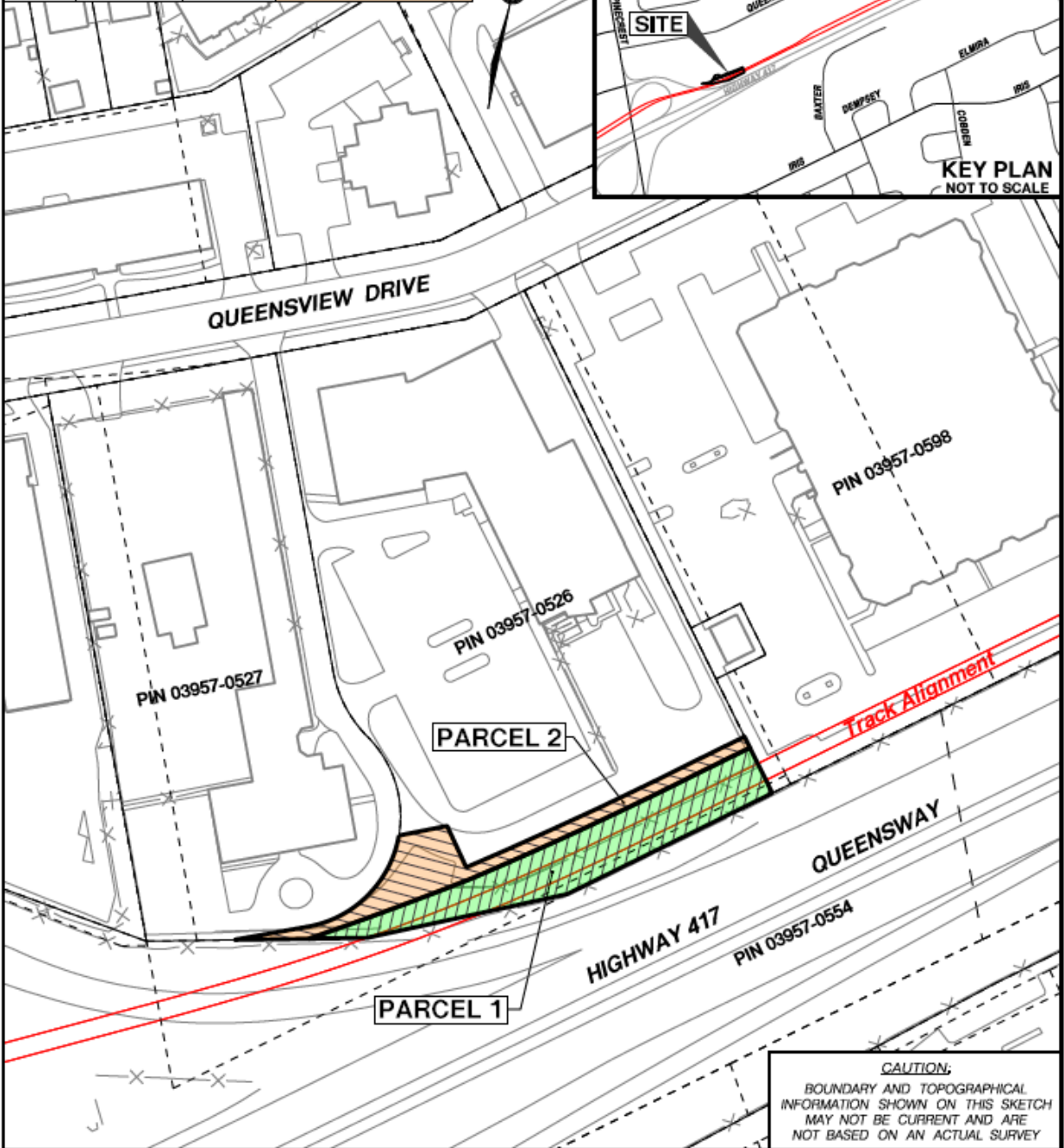
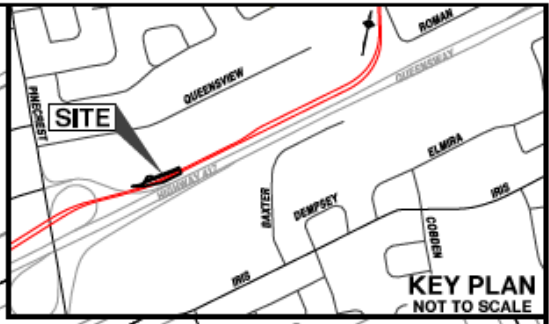


WESTERN LRT - PROPERTY SKETCHES

OWNER	CAD BY: J. MIJSE/MW	CHECKED BY: W.A. HARPER	MS No.: 18689-PRP_014b.dgn
SCALE 1:1000 (METRIC)	DATE: JAN., 2017	AREA: AS SHOWN	

PLANNING, INFRASTRUCTURE
& ECONOMIC DEVELOPMENT
DEPARTMENT
SURVEYS & MAPPING UNIT

PARCEL	PART OF PIN	AREA (m ²)	ACQUISITION
1	03957-0526	1134	FEE SIMPLE
2		610	TEMPORARY EASEMENT

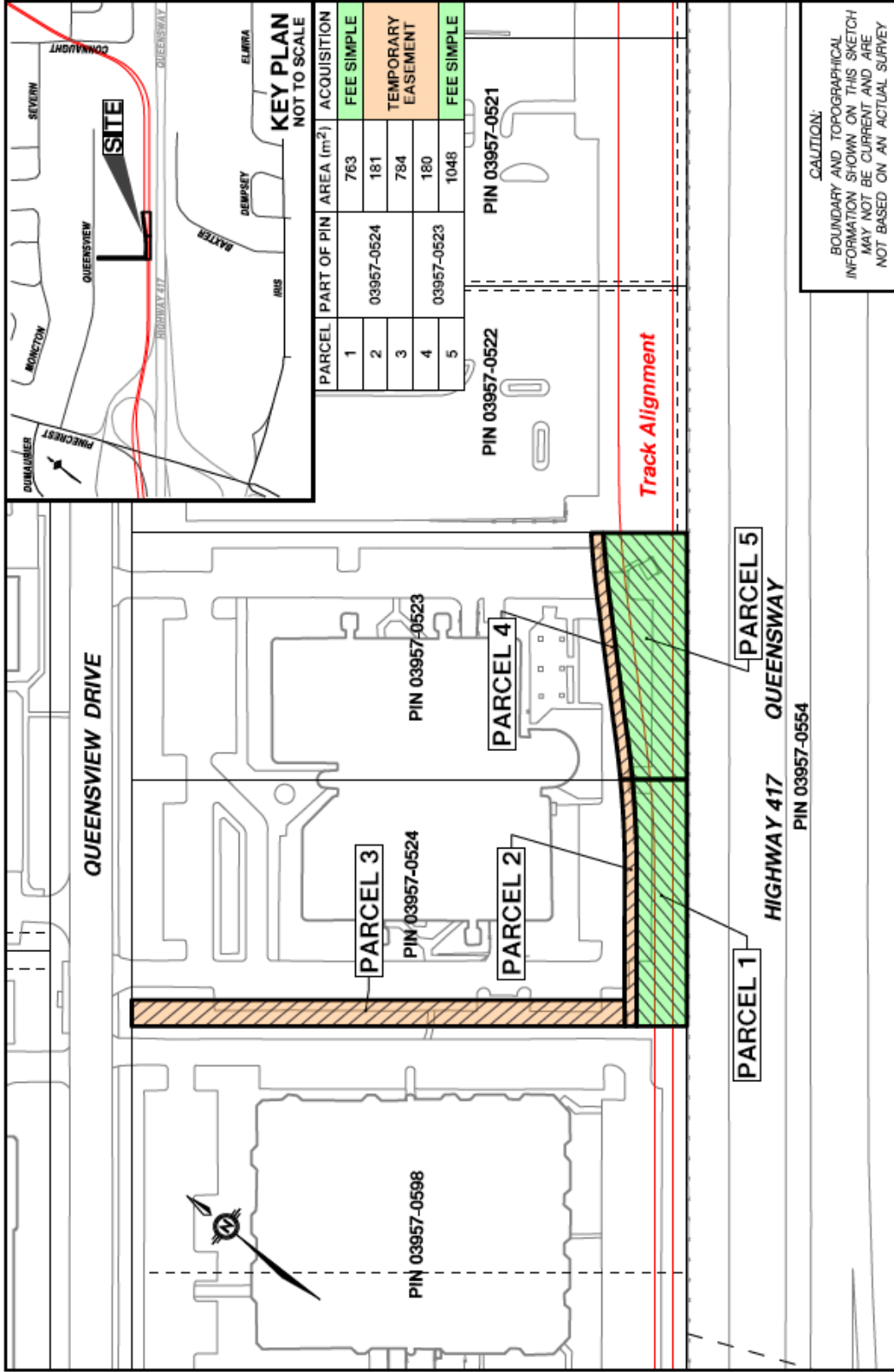


CAUTION:
BOUNDARY AND TOPOGRAPHICAL
INFORMATION SHOWN ON THIS SKETCH
MAY NOT BE CURRENT AND ARE
NOT BASED ON AN ACTUAL SURVEY

WESTERN LRT - PROPERTY SKETCHES

OWNER		CAD BY: J. MUISE	
		CHECKED BY: W.A. HARPER	
SCALE 1:1250 (METRIC)	DATE: JAN., 2017	AREA: AS SHOWN	MS No.: 18689-PRP_015b.dgn

Ottawa
PLANNING, INFRASTRUCTURE AND
ECONOMIC DEVELOPMENT
DEPARTMENT
SURVEYS AND MAPPING UNIT



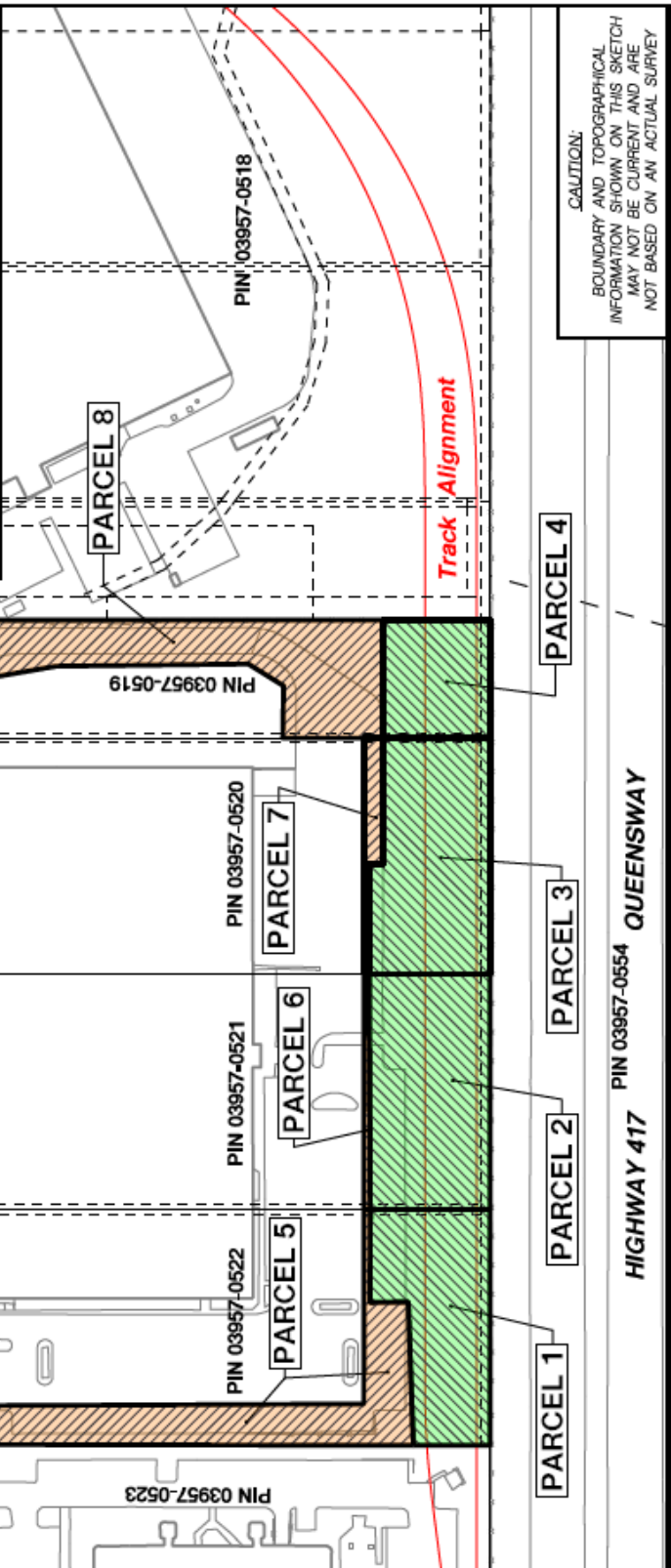
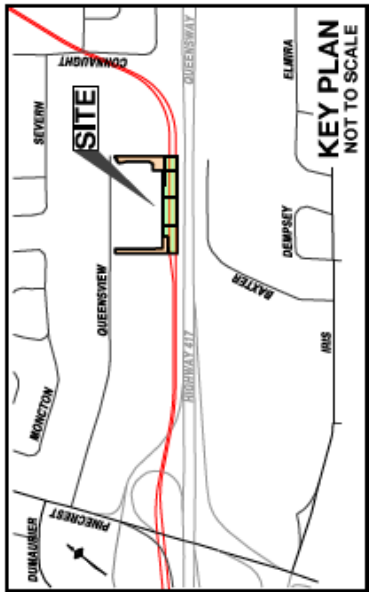
WESTERN LRT - PROPERTY SKETCHES

PLANNING, INFRASTRUCTURE AND
ECONOMIC DEVELOPMENT
DEPARTMENT
SURVEYS AND MAPPING UNIT



OWNER	CAD BY: J. MUISE
SCALE 1:1250 (METR/C)	CHECKED BY: W.A. HARPER
DATE: JAN., 2017	MS No.: 18689-PRP_016b.dgn
AREA: AS SHOWN	

PARCEL	PART OF PIN	AREA (m ²)	ACQUISITION
1	03957-0522	1503	FEE SIMPLE
2	03957-0521	1899	
3	03957-0520	1788	
4	03957-0519	843	TEMPORARY EASEMENT
5	03957-0522	1564	
6	03957-0521	91	
7	03957-0520	201	
8	03957-0519	1792	



CAUTION:
BOUNDARY AND TOPOGRAPHICAL
INFORMATION SHOWN ON THIS SKETCH
MAY NOT BE CURRENT AND ARE
NOT BASED ON AN ACTUAL SURVEY

WESTERN LRT - PROPERTY SKETCHES

OWNER

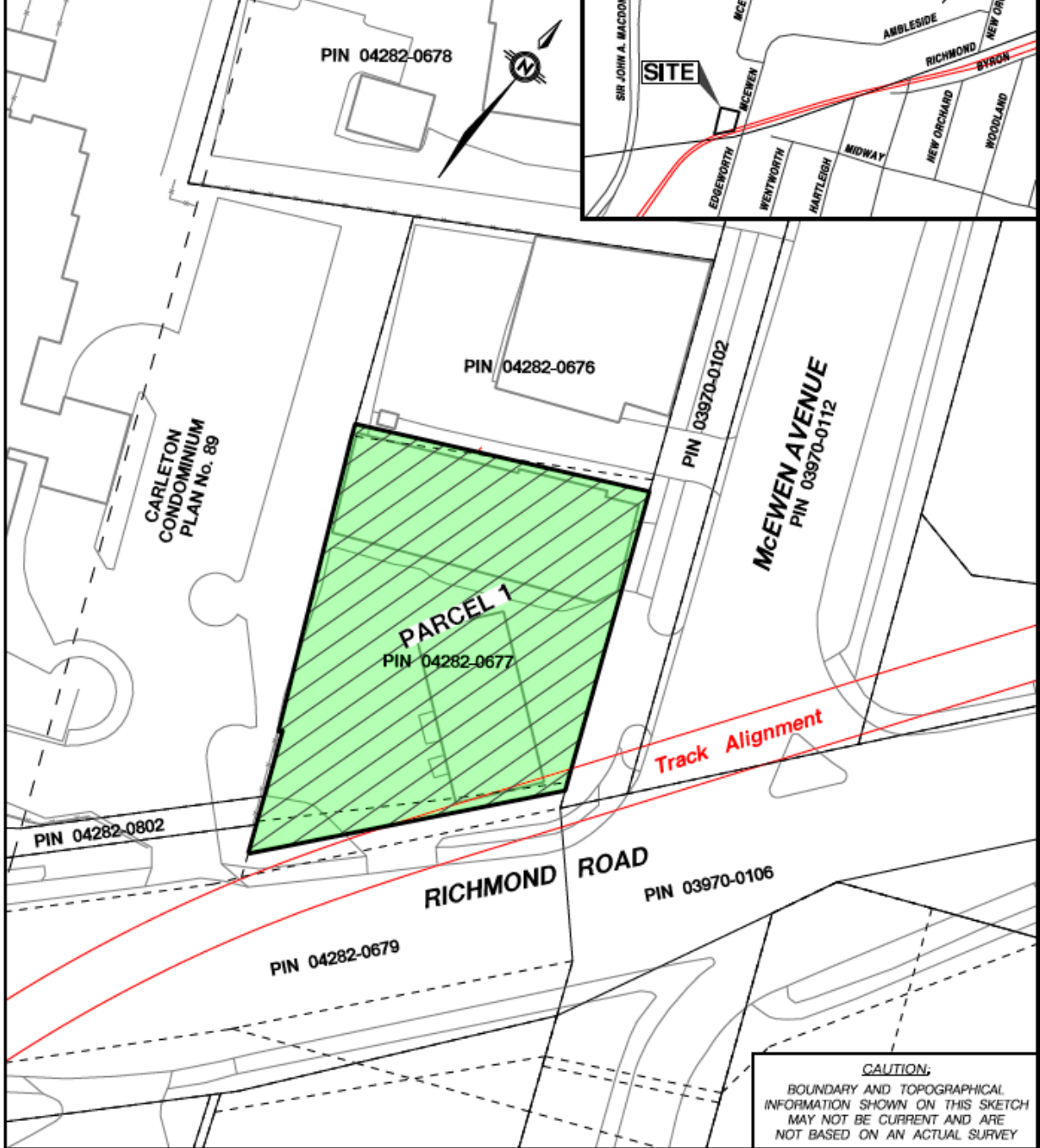
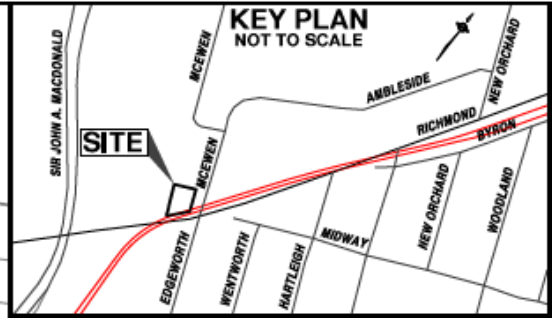
CAD BY: J. MUISE
CHECKED BY: W.A. HARPER

SCALE 1:1500 (METRIC) DATE: JAN., 2017 AREA: AS SHOWN MS No.: 18688-PRP_017b.dgn

PLANNING, INFRASTRUCTURE AND
ECONOMIC DEVELOPMENT
DEPARTMENT
SURVEYS AND MAPPING UNIT



PARCEL	ALL OF PIN	AREA (m ²)	ACQUISITION
1	04282-0677	1120	FEE SIMPLE



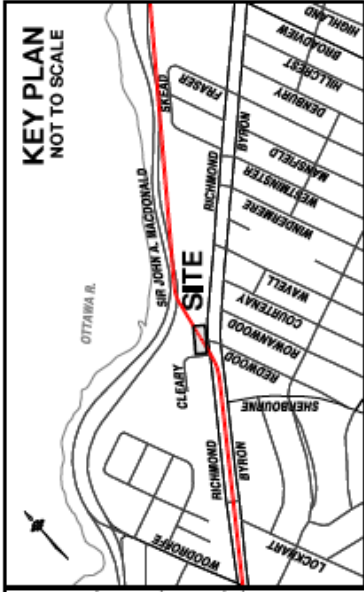
CAUTION:
 BOUNDARY AND TOPOGRAPHICAL
 INFORMATION SHOWN ON THIS SKETCH
 MAY NOT BE CURRENT AND ARE
 NOT BASED ON AN ACTUAL SURVEY

WESTERN LRT - PROPERTY SKETCHES

OWNER	CAD BY: J. MUISE
	CHECKED BY: W.A. HARPER

SCALE 1:500 (METRIC)	DATE: NOV., 2016	AREA: AS SHOWN	MS No.: 18689-PRP_018a.dgn
----------------------	------------------	----------------	----------------------------

**PLANNING, INFRASTRUCTURE AND
 ECONOMIC DEVELOPMENT
 DEPARTMENT**
 SURVEYS AND MAPPING UNIT



PARCEL	ALL OF PIN	AREA (m ²)	ACQUISITION
1	04751-0121	2444	FEE SIMPLE



KEY PLAN
NOT TO SCALE

CAUTION:
BOUNDARY AND TOPOGRAPHICAL
INFORMATION SHOWN ON THIS SKETCH
MAY NOT BE CURRENT AND ARE
NOT BASED ON AN ACTUAL SURVEY

WESTERN LRT - PROPERTY SKETCHES

OWNER	CAD BY: J. MUISE
SCALE 1:750 (METRIC)	CHECKED BY: W.A. HARPER
DATE: NOV., 2016	AREA: AS SHOWN
	IMS No.: 18689-PRP_055b.dgn

PLANNING, INFRASTRUCTURE AND
ECONOMIC DEVELOPMENT
DEPARTMENT
SURVEYS AND MAPPING UNIT



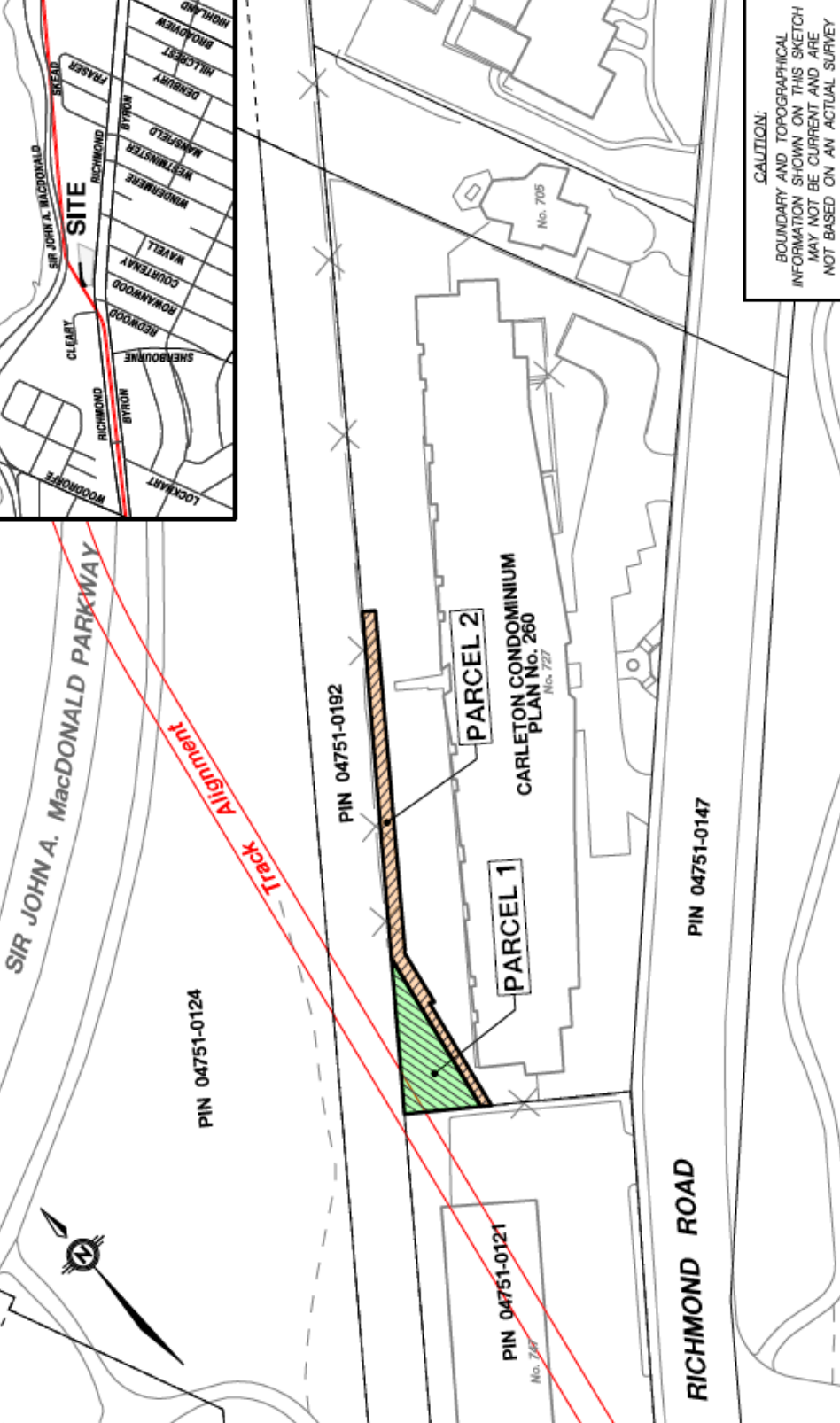
Ottawa

CARLETON CONDOMINIUM
PLAN No. 260

KEY PLAN
NOT TO SCALE



PARCEL	PART OF PIN (BLOCK 15260)	AREA (m ²)	ACQUISITION
1	CARLETON CONDOMINIUM CORPORATION No. 260	120	FEE SIMPLE
2		133	TEMPORARY EASEMENT



CAUTION:
BOUNDARY AND TOPOGRAPHICAL
INFORMATION SHOWN ON THIS SKETCH
MAY NOT BE CURRENT AND ARE
NOT BASED ON AN ACTUAL SURVEY

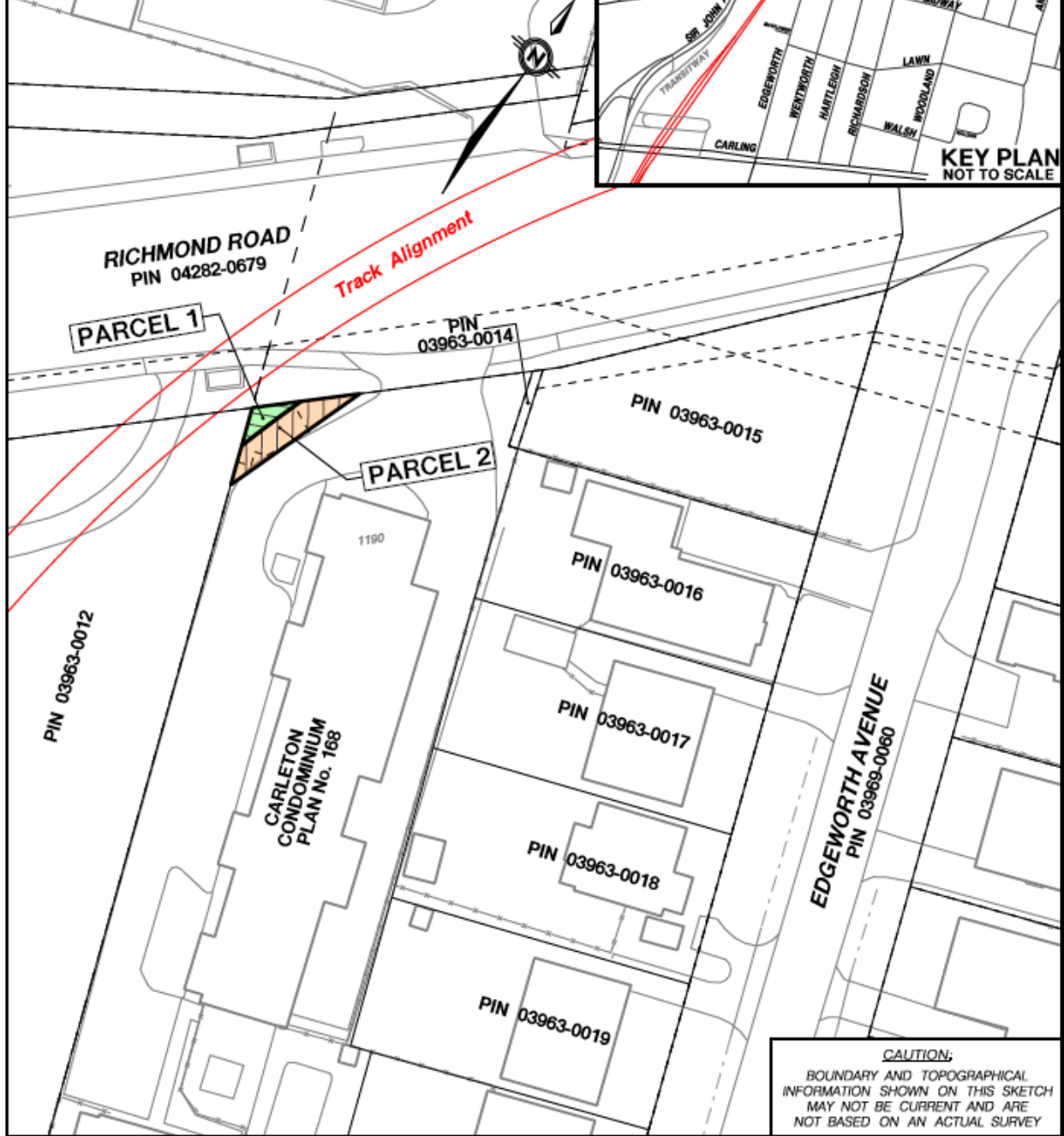
WESTERN LRT - PROPERTY SKETCHES

OWNER	CAD BY: J. MUISE	AREA: 108.5 m ²	MS No.: 18689-PRP_056a.dgn
	CHECKED BY: W.A. HARPER	DATE: NOV., 2016	

PLANNING, INFRASTRUCTURE AND
ECONOMIC DEVELOPMENT
DEPARTMENT
SURVEYS AND MAPPING UNIT



PARCEL	PART OF PIN (BLOCK 15168)	AREA m ²	ACQUISITION
1	CARLETON CONDOMINIUM CORPORATION No. 168	8	FEE SIMPLE
2		30	TEMPORARY EASEMENT



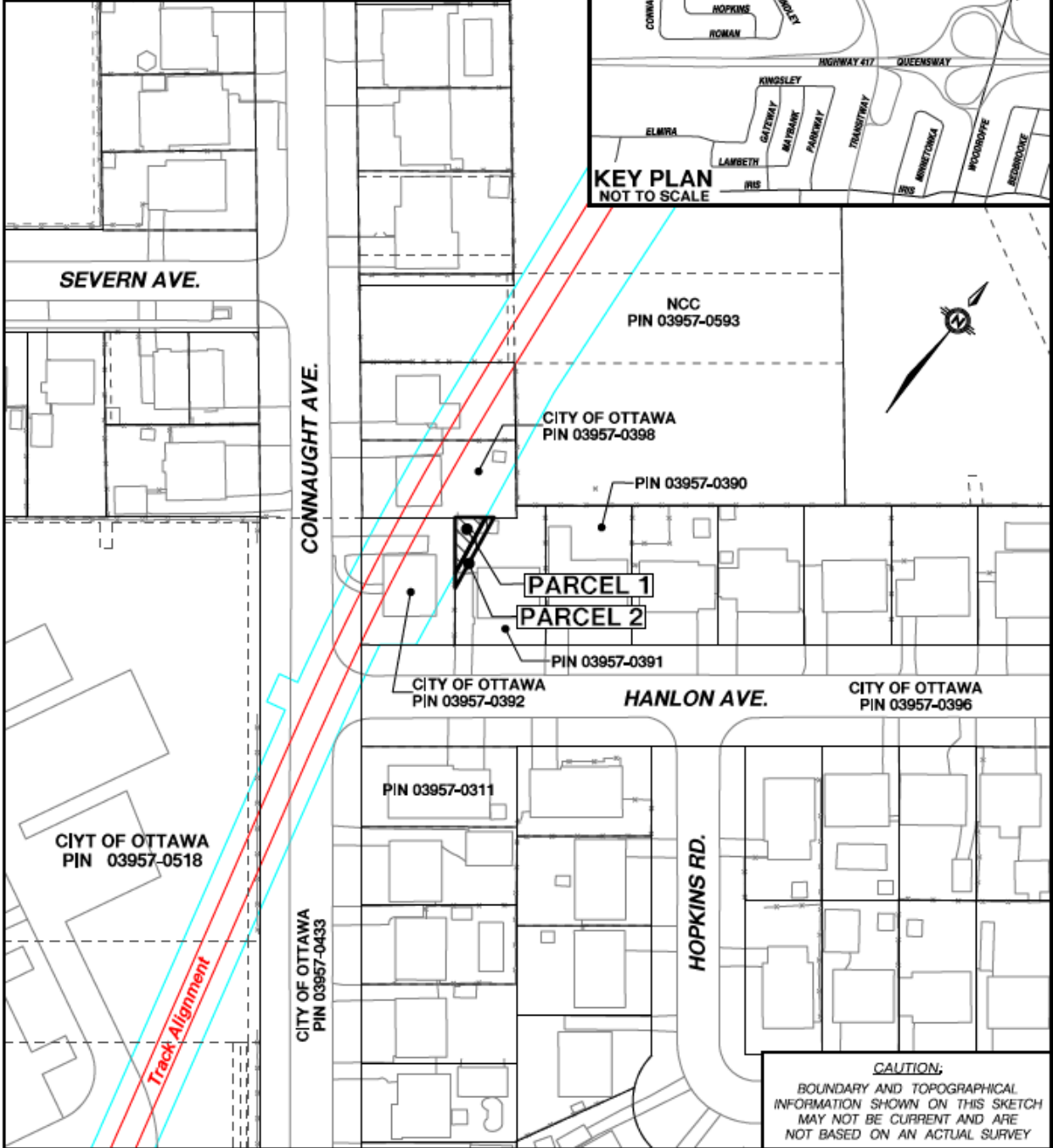
CAUTION:
BOUNDARY AND TOPOGRAPHICAL INFORMATION SHOWN ON THIS SKETCH MAY NOT BE CURRENT AND ARE NOT BASED ON AN ACTUAL SURVEY

WESTERN LRT - PROPERTY SKETCHES

OWNER	CAD BY: J. MUISE		
	CHECKED BY: W.A. HARPER		
SCALE 1:500 (METRIC)	DATE: JAN., 2017	AREA: AS SHOWN	MS No.: 18589-PRP_076a.dgn

Ottawa
PLANNING, INFRASTRUCTURE AND ECONOMIC DEVELOPMENT
DEPARTMENT
SURVEYS AND MAPPING UNIT

PARCEL	PART OF PIN	AREA (Sq. m)	ACQUISITION
1	03957-0391	33	PERMANENT EASEMENT
2		20	TEMPORARY EASEMENT



CAUTION:
BOUNDARY AND TOPOGRAPHICAL
INFORMATION SHOWN ON THIS SKETCH
MAY NOT BE CURRENT AND ARE
NOT BASED ON AN ACTUAL SURVEY

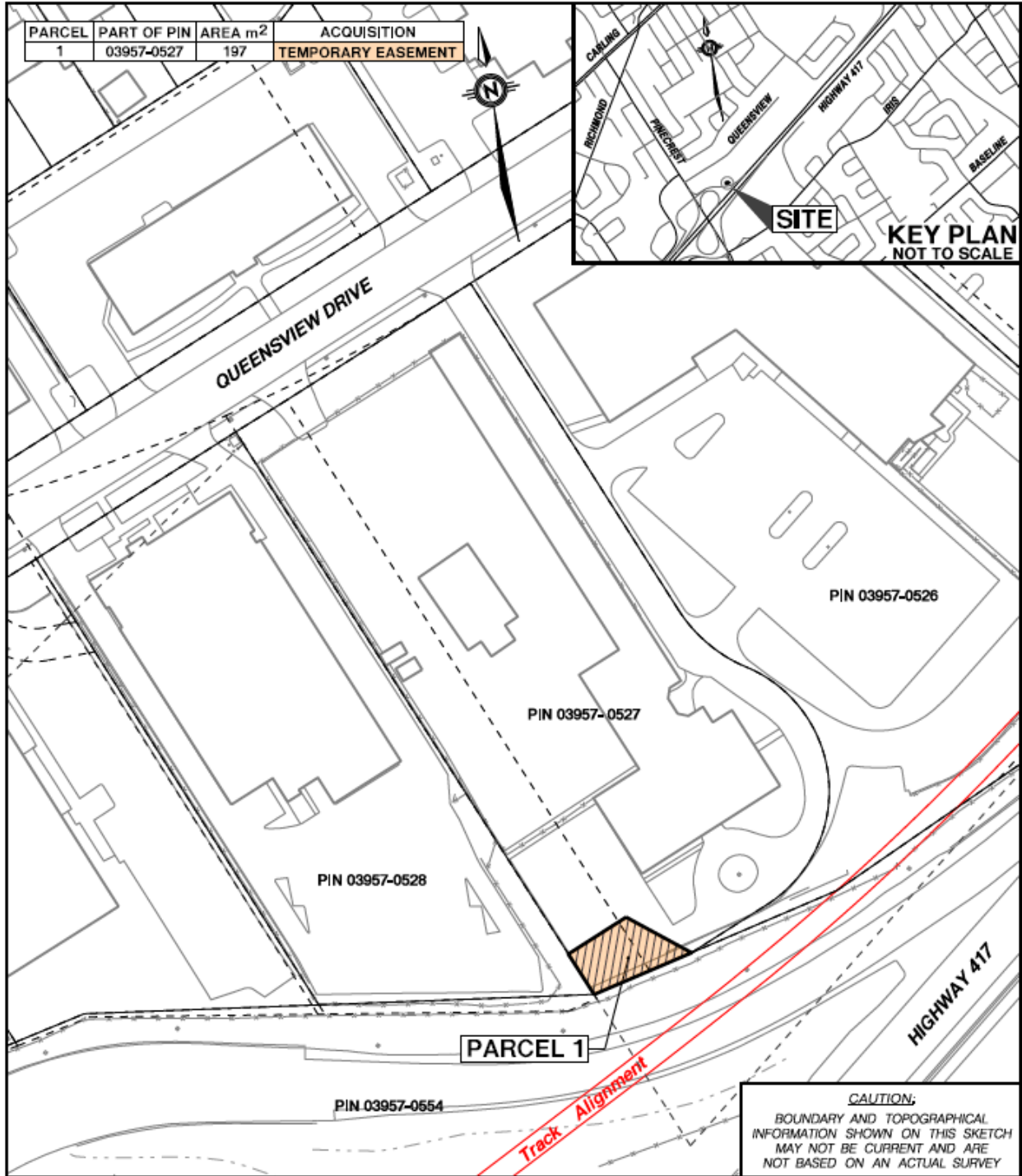
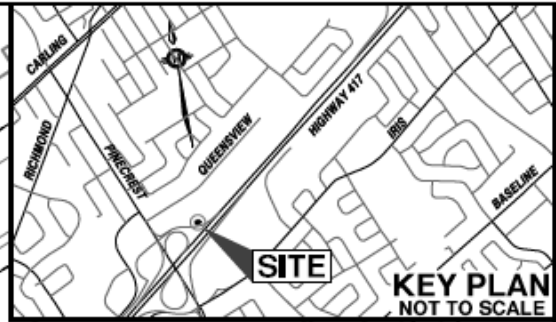
WESTERN LRT - PROPERTY SKETCHES

OWNER		CAD BY: J. MUISE/MW	
		CHECKED BY: W.A. HARPER	
SCALE 1:1000 (METRIC)	DATE: NOV. 24, 2016	AREA: AS SHOWN	MS No.: 18689-PRP_093.dgn



**PLANNING, INFRASTRUCTURE
& ECONOMIC DEVELOPMENT
DEPARTMENT
SURVEYS & MAPPING UNIT**

PARCEL	PART OF PIN	AREA m ²	ACQUISITION
1	03957-0527	197	TEMPORARY EASEMENT



CAUTION:
BOUNDARY AND TOPOGRAPHICAL
INFORMATION SHOWN ON THIS SKETCH
MAY NOT BE CURRENT AND ARE
NOT BASED ON AN ACTUAL SURVEY

WESTERN LRT - PROPERTY SKETCHES

OWNER

CAD BY: J. Mulse

CHECKED BY: W.A. Harper

SCALE 1:1000 (Metric)

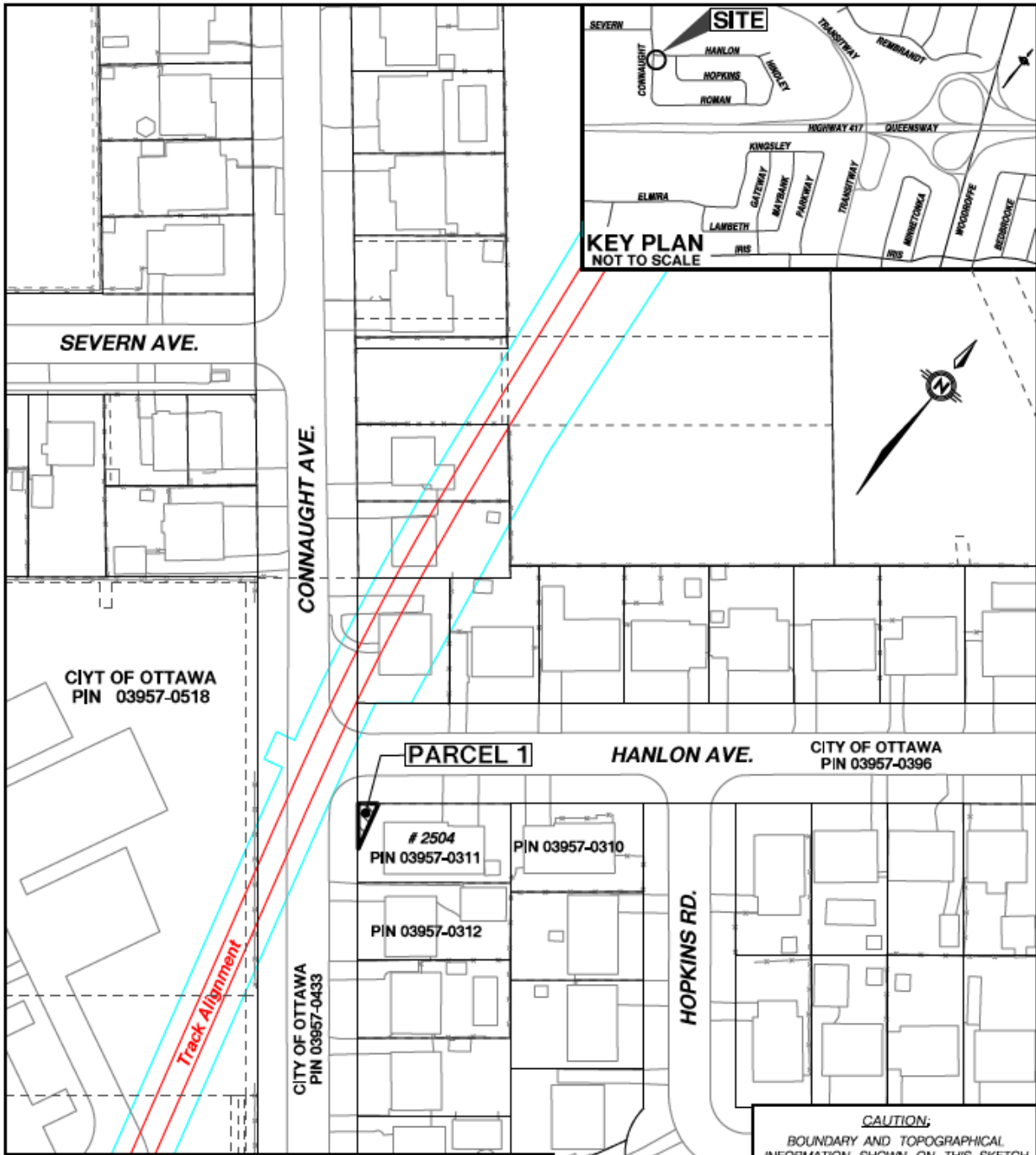
DATE: JAN., 2017

AREA: AS SHOWN

MS No.: 18689-PRP_096a.dgn



PLANNING, INFRASTRUCTURE AND
ECONOMIC DEVELOPMENT
DEPARTMENT
SURVEYS AND MAPPING UNIT



PARCEL	PART OF PIN	AREA (Sq. m)	ACQUISITION
1	03957-0311	19	PERMANENT EASEMENT

CAUTION:
 BOUNDARY AND TOPOGRAPHICAL
 INFORMATION SHOWN ON THIS SKETCH
 MAY NOT BE CURRENT AND ARE
 NOT BASED ON AN ACTUAL SURVEY

WESTERN LRT - PROPERTY SKETCHES

OWNER	CAD BY: J. MUISE/MW		
	CHECKED BY: W.A. HARPER		
SCALE 1:1000 (METRIC)	DATE: NOV, 25, 2016	AREA: AS SHOWN	MS No.: 18689-PRP_097.dgn



**PLANNING, INFRASTRUCTURE
 & ECONOMIC DEVELOPMENT
 DEPARTMENT
 SURVEYS & MAPPING UNIT**

SCHEDULE "B"

Trillium Line

All right, title and interest in the following lands:

27. Part of PIN 04328-0006 (LT), PART LOT 16 CONCESSION 3 RIDEAU FRONT GLOUCESTER PART 1, 5R2241; GLOUCESTER designated as Parcel 1 on drawing 18692-PRP_006a.dgn
28. Part of PIN 04328-0008 (LT), PART LOT 16 CONCESSION 3 RIDEAU FRONT, GLOUCESTER, PARTS 1, 2, 3, 4, 5, 6, 5R2150; GLOUCESTER designated as Parcel 1 on drawing 18692-PRP_008a.dgn
29. Part of PIN 04328-0011 (LT), PART NORTH 1/2 LOT 16 CONCESSION 3 RIDEAU FRONT GLOUCESTER PART 2, 5R5704; GLOUCESTER designated as Parcel 1 on drawing 18692-PRP_009a.dgn
30. Part of PIN 04069-0641 (LT), PART LOT 14, PLAN 31, OF LOT 22, CONCESSION JG; PART 6 4R8109; OTTAWA/GLOUCESTER designated as Parcel 1 on drawing 18692-PRP_052.dgn
31. Part of PIN 04065-0115 (LT), PART OF LOT A, CONCESSION 3, RIDEAU FRONT, GLOUCESTER, BEING PARTS 1 TO 10 AND 14 TO 16 ON PLAN 4R-26193. TOGETHER WITH AN EASEMENT AS IN CT228448. TOGETHER WITH AS IN NS77745; TOGETHER WITH AN EASEMENT OVER PART 5 ON PLAN 5R-284 AS IN OC56030; TOGETHER WITH AN EASEMENT OVER PART 6 ON PLAN 5R-284 AS IN OC56038; SUBJECT TO AN EASEMENT OVER PARTS 1, 2 AND 5 ON PLAN 4R-26193 IN FAVOUR OF HYDRO OTTAWA LIMITED AS IN OC9564; SUBJECT TO AN EASEMENT IN GROSS OVER PARTS 2 AND 3 ON PLAN 4R-26193 AS IN OC1351818; SUBJECT TO AN EASEMENT IN GROSS OVER PART 9 ON PLAN 4R-26193 AS IN OC1351819; SUBJECT TO AN EASEMENT IN GROSS OVER PARTS 9, 10 AND 16 ON PLAN 4R-26193 AS IN OC1351820; SUBJECT TO AN EASEMENT OVER PARTS 1, 2, 3, 4, 5 AND 6 ON PLAN 4R-26193 IN FAVOUR OF PART OF LOT A, CONCESSION 3, RIDEAU FRONT, GLOUCESTER, BEING PARTS 11, 12, 13 AND 17 TO 23 ON PLAN 4R-26193 AS IN OC1397616; SUBJECT TO AN EASEMENT OVER PARTS 8, 9, 10, 15 AND 16 ON PLAN 4R-26193 IN FAVOUR OF PART OF LOT A, CONCESSION 3, RIDEAU FRONT, GLOUCESTER, BEING PARTS 11, 12, 13 AND 17 TO 23 ON PLAN 4R-26193 AS IN OC1397616; TOGETHER WITH AN EASEMENT OVER PART OF LOT A, CONCESSION 3, RIDEAU FRONT, GLOUCESTER, BEING PARTS 11 AND 12 ON PLAN 4R-26193 AS IN OC1397616; TOGETHER WITH AN EASEMENT OVER PART OF LOT A, CONCESSION 3, RIDEAU FRONT, GLOUCESTER, BEING PARTS 17, 18, 19, 22 AND 23 ON PLAN 4R-26193 AS IN OC1397616; TOGETHER WITH AN EASEMENT OVER PART OF LOT A, CONCESSION 3, RIDEAU FRONT, GLOUCESTER, BEING PART 22 ON PLAN 4R-26193 AS IN OC1397616; SUBJECT TO AN EASEMENT OVER PARTS 1, 2, 3 AND 4

ON PLAN 4R26193 IN FAVOUR OF PART LOT A CONCESSION 3RF GLOUCESTER AS IN N705355 AND OT36783, EXCEPT PART 18 ON 5R284, EXCEPT PART 1 ON 5R213, EXCEPT PARTS 19 AND 21 ON EXPROPRIATION PLAN NS275909, EXCEPT PARTS 1 AND 2 ON 4R23974 AS IN OC1604515; SUBJECT TO AN EASEMENT IN GROSS OVER PARTS 1 TO 10 AND 14 TO 16 PLAN 4R26193 AS IN OC1709561; SUBJECT TO AN EASEMENT AS IN OC1721440; CITY OF OTTAWA designated as Parcel 1 on drawing 18692-PRP_053.dgn

32. Part of PINs 15975-0001 (LT) to 15975-0232 (LT) being part of the common elements on OTTAWA-CARLETON STANDARD CONDOMINIUM PLAN NO. 975 AND ITS APPURTENANT INTEREST; SUBJECT TO AND TOGETHER WITH EASEMENTS AS SET OUT IN SCHEDULE A AS IN OC1726177; CITY OF OTTAWA designated as Parcel 1 on drawing 18692-PRP_054.dgn
33. Part of PIN 04055-0160 (LT), PART LOT 6 CONCESSION 3 RIDEAU FRONT GLOUCESTER AS IN CT222630, EXCEPT THE SUBJECT TO THEREIN; TOGETHER WITH CT222630; GLOUCESTER designated as Parcel 1 on drawing 18692-PRP_058c.dgn
34. Part of PIN 04055-0161 (LT), PART LOT 6 CONCESSION 3RF GLOUCESTER AS IN N477925; TOGETHER WITH N477925; GLOUCESTER designated as Parcel 1 on drawing 18692-PRP_059b.dgn
35. Part of PIN 04055-0159 (LT), PART LOT 6 CONCESSION 3 RIDEAU FRONT GLOUCESTER AS IN CT160457 AND GL73833, EXCEPT AS IN CT222630, N477925, CT198296, N566618, N439357, N314150, N711427, CT115669 AND CT135137; TOGETHER WITH CT160457; GLOUCESTER designated as Parcel 1 on drawing 18692-PRP_075.dgn

An estate, right or interest, for a limited time in the nature of a permanent easement in the following lands:

36. Part of PIN 04055-0169 (LT), PART LOT 6 CONCESSION 3RF GLOUCESTER PART 1, 5R1022 (ALSO KNOWN AS MAC STREET); SUBJECT TO CT140679, GL78966, CT121531, CT135137, GL78361, GL83079; SUBJECT TO N755440, N755447, N755457 GLOUCESTER designated as Parcel 2 on drawing 18692-PRP_075.dgn

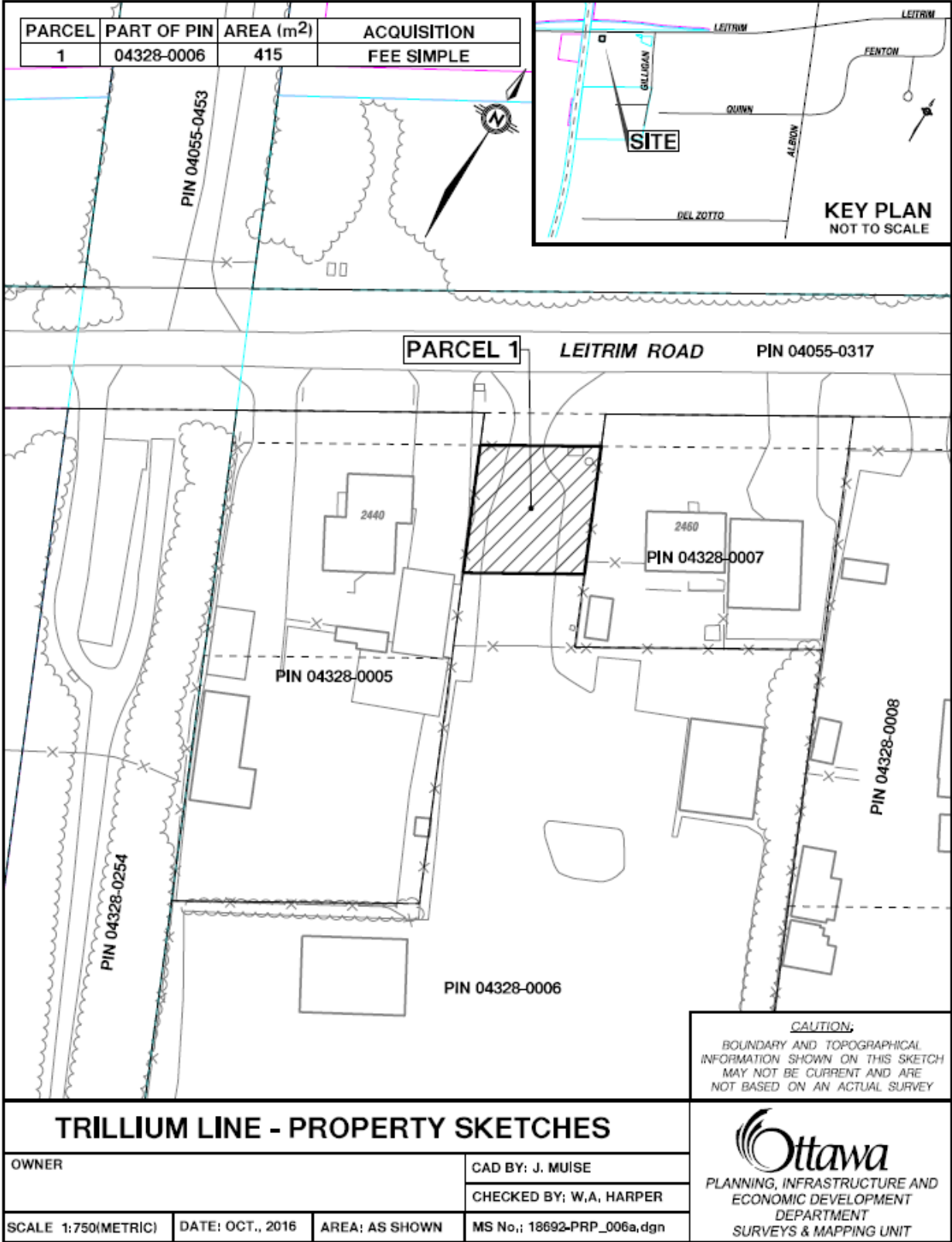
An estate, right or interest, for a limited time in the nature of a temporary easement for a period of thirty-six (36) months in the following lands:

37. Part of PIN 04055-0161 (LT), PART LOT 6 CONCESSION 3RF GLOUCESTER AS IN N477925; TOGETHER WITH N477925; GLOUCESTER designated as Parcel 2 on drawing 18692-PRP_059b.dgn
38. Part of PIN 04055-0169 (LT), PART LOT 6 CONCESSION 3RF GLOUCESTER PART 1, 5R1022 (ALSO KNOWN AS MAC STREET); SUBJECT TO CT140679, GL78966,

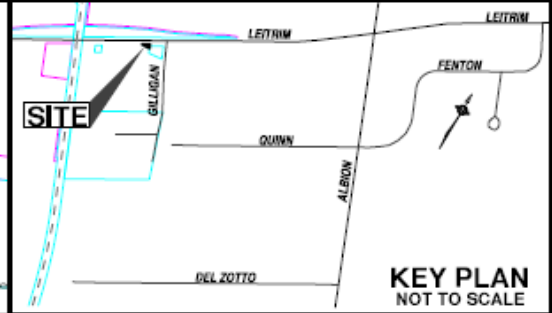
CT121531, CT135137, GL78361, GL83079; SUBJECT TO N755440, N755447,
N755457 GLOUCESTER designated as Parcel 3 on drawing 18692-PRP_075.dgn

SCHEDULE "B-1"

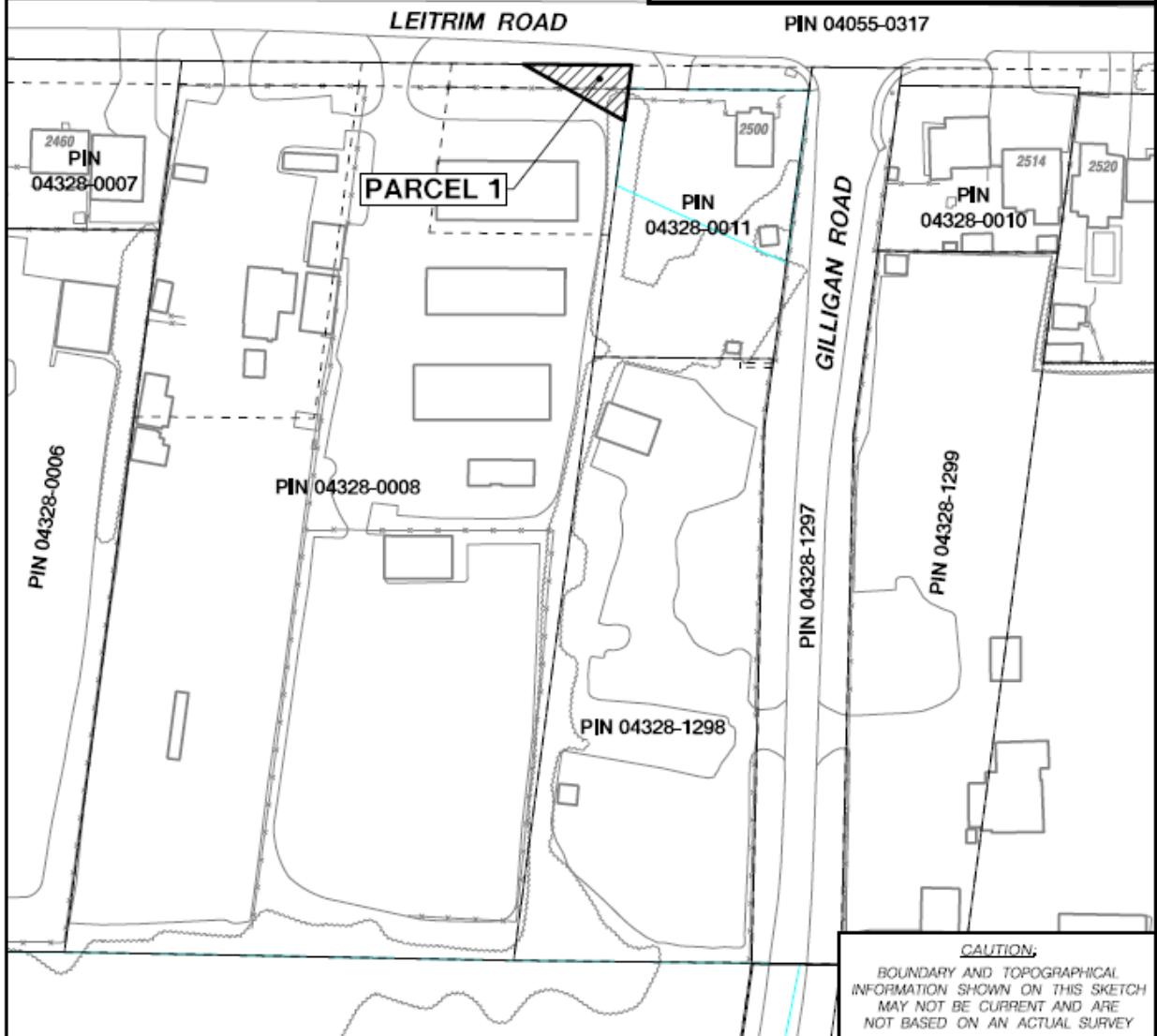
Trillium Line



PARCEL	PART OF PIN	AREA (m ²)	ACQUISITION
1	04328-0008	153	FEE SIMPLE



KEY PLAN
NOT TO SCALE



CAUTION;
BOUNDARY AND TOPOGRAPHICAL
INFORMATION SHOWN ON THIS SKETCH
MAY NOT BE CURRENT AND ARE
NOT BASED ON AN ACTUAL SURVEY

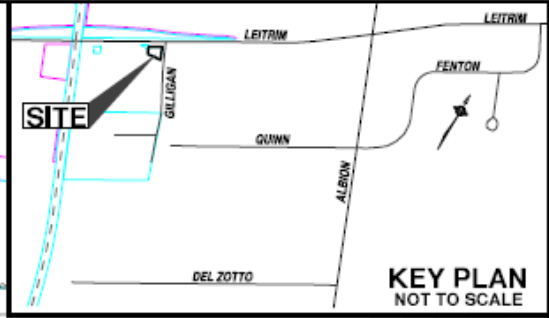
TRILLIUM LINE - PROPERTY SKETCHES

OWNER		CAD BY: J. MUISE	
		CHECKED BY: W.A. HARPER	
SCALE 1:1250(METRIC)	DATE: OCT., 2016	AREA: AS SHOWN	MS No.: 18692-PRP_008a.dgn

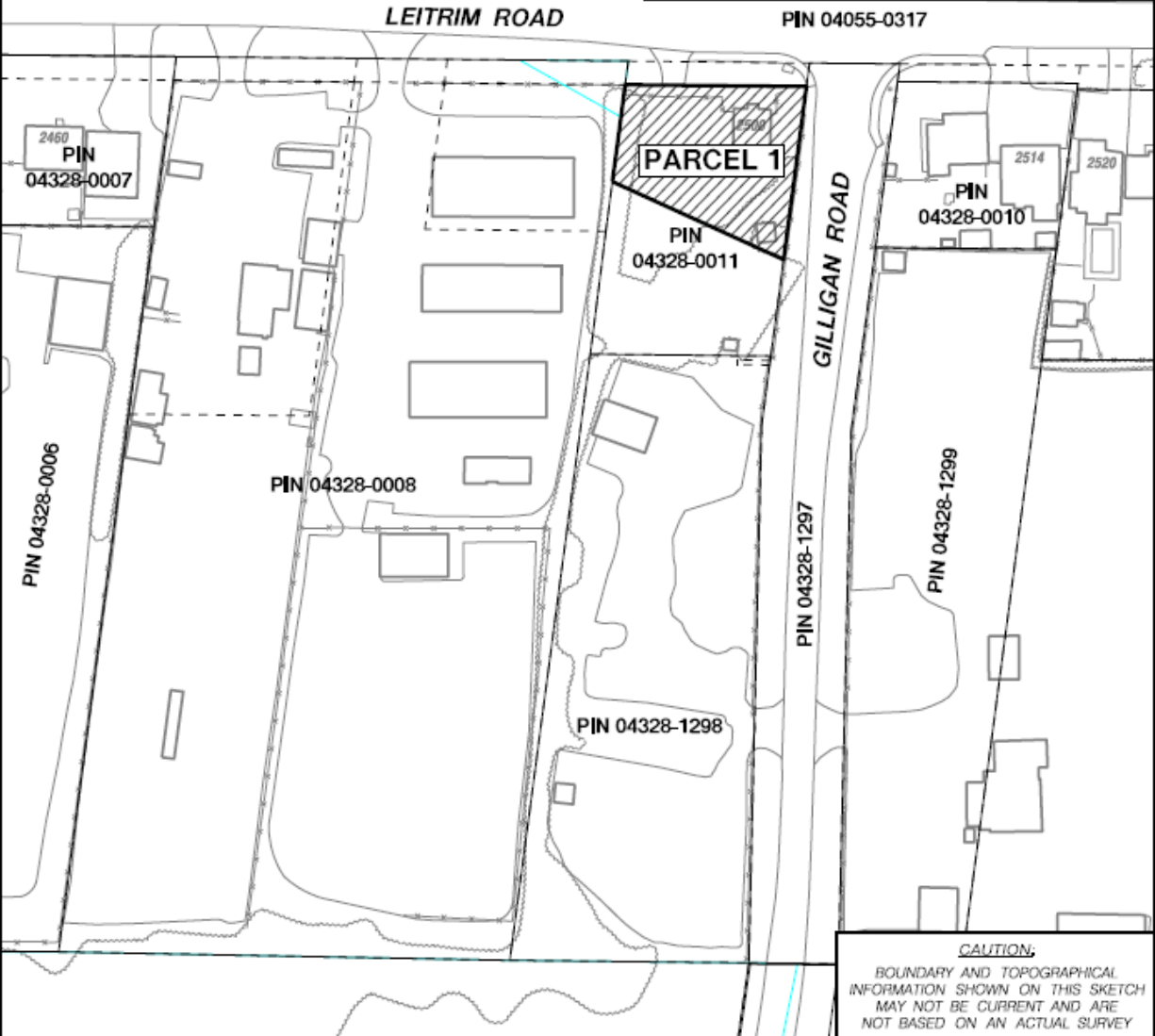


PLANNING, INFRASTRUCTURE AND
ECONOMIC DEVELOPMENT
DEPARTMENT
SURVEYS & MAPPING UNIT

PARCEL	PART OF PIN	AREA (m ²)	ACQUISITION
1	04328-0011	1230	FEE SIMPLE



KEY PLAN
NOT TO SCALE

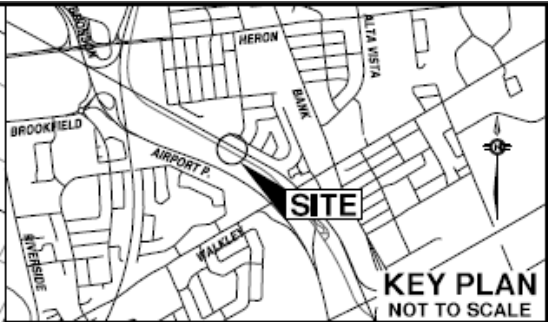
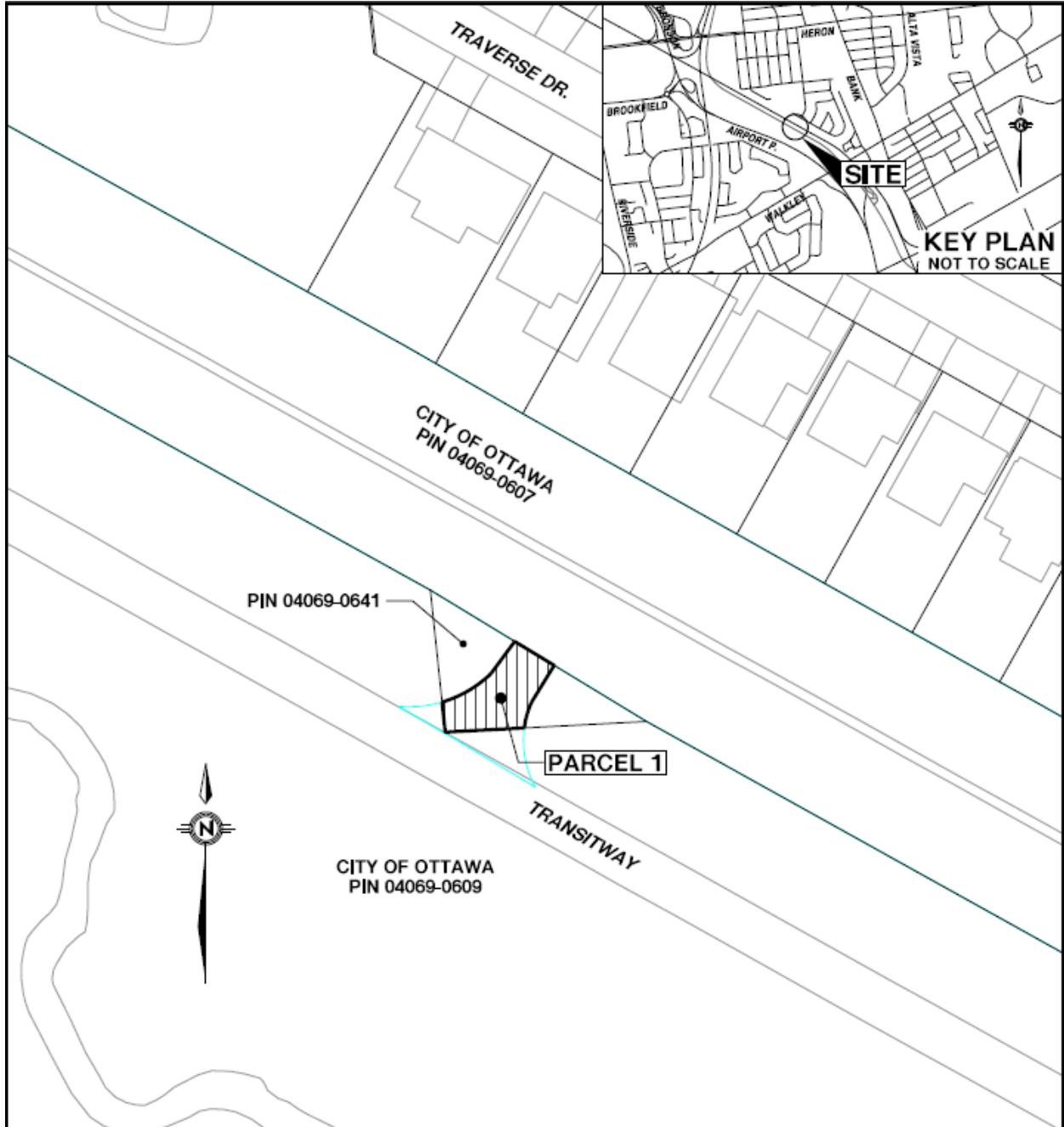


CAUTION:
BOUNDARY AND TOPOGRAPHICAL
INFORMATION SHOWN ON THIS SKETCH
MAY NOT BE CURRENT AND ARE
NOT BASED ON AN ACTUAL SURVEY

TRILLIUM LINE - PROPERTY SKETCHES

OWNER		CAD BY: J. MUISE	
		CHECKED BY: W.A. HARPER	
SCALE 1:1250(METRIC)	DATE: OCT., 2016	AREA: AS SHOWN	MS No.: 18692-PRP_009a,dgn





PARCEL	PART OF PIN	AREA (Sq. m)	ACQUISITION
1	04069-0641	125	FEE SIMPLE

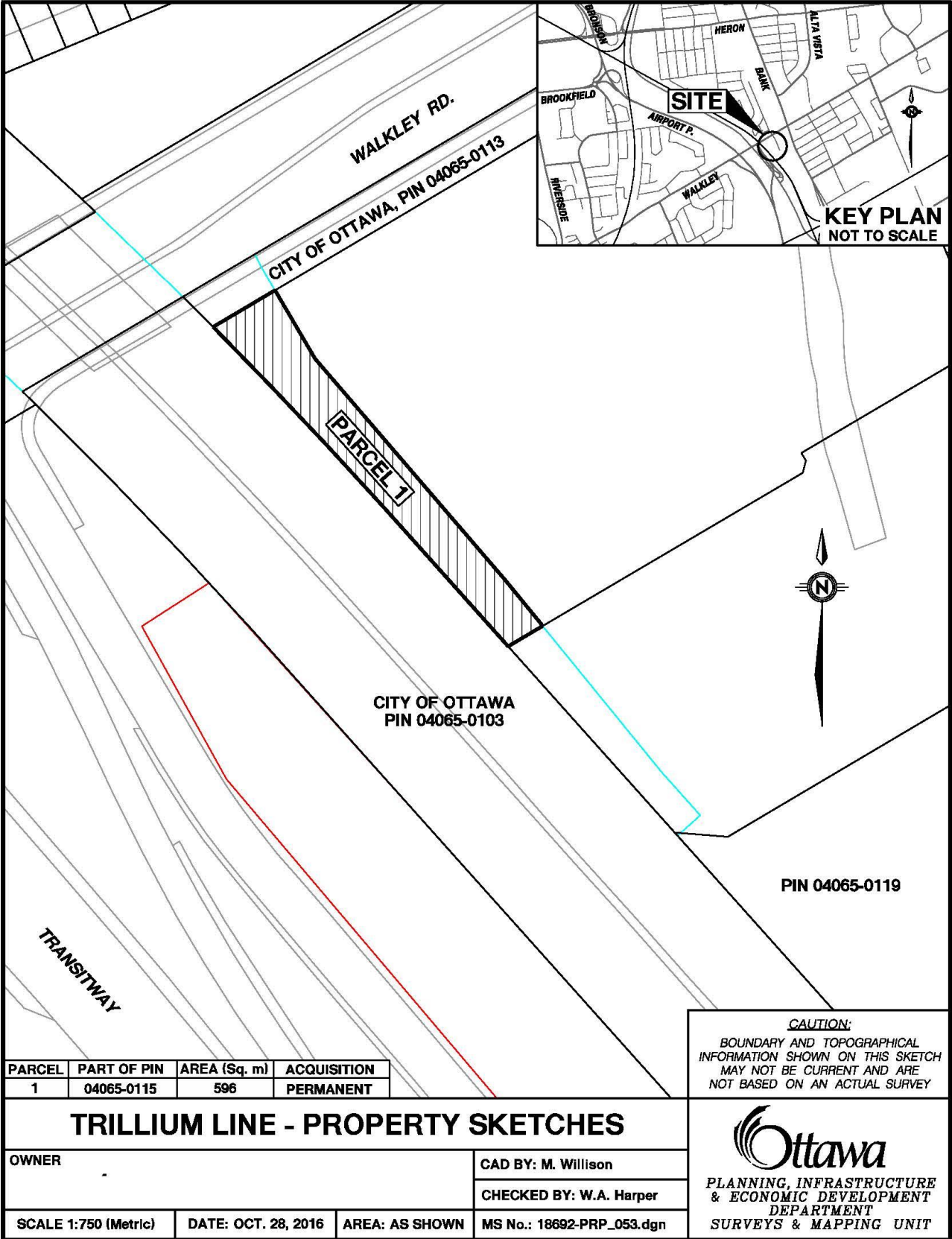
CAUTION:
 BOUNDARY AND TOPOGRAPHICAL
 INFORMATION SHOWN ON THIS SKETCH
 MAY NOT BE CURRENT AND ARE
 NOT BASED ON AN ACTUAL SURVEY

TRILLIUM LINE - PROPERTY SKETCHES

OWNER		CAD BY: M. Willison	
		CHECKED BY: W.A. Harper	
SCALE 1:750 (Metric)	DATE: OCT, 28, 2016	AREA: AS SHOWN	MS No.: 18692-PRP_052.dgn



**PLANNING, INFRASTRUCTURE
 & ECONOMIC DEVELOPMENT
 DEPARTMENT
 SURVEYS & MAPPING UNIT**



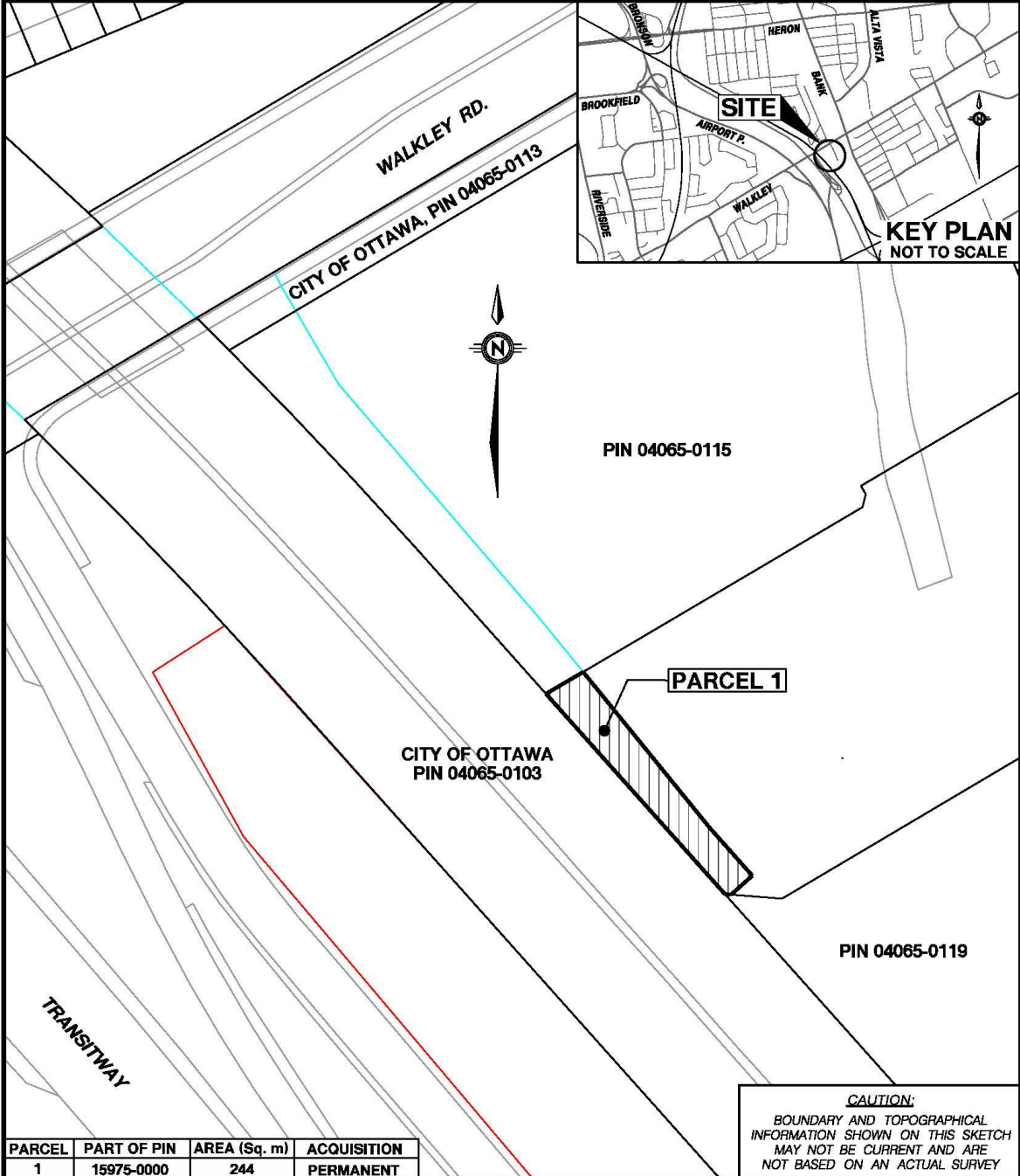
PARCEL	PART OF PIN	AREA (Sq. m)	ACQUISITION
1	04065-0115	596	PERMANENT

CAUTION:
 BOUNDARY AND TOPOGRAPHICAL
 INFORMATION SHOWN ON THIS SKETCH
 MAY NOT BE CURRENT AND ARE
 NOT BASED ON AN ACTUAL SURVEY

TRILLIUM LINE - PROPERTY SKETCHES

OWNER		CAD BY: M. Willison	
		CHECKED BY: W.A. Harper	
SCALE 1:750 (Metric)	DATE: OCT. 28, 2016	AREA: AS SHOWN	MS No.: 18692-PRP_053.dgn

Ottawa
 PLANNING, INFRASTRUCTURE
 & ECONOMIC DEVELOPMENT
 DEPARTMENT
 SURVEYS & MAPPING UNIT

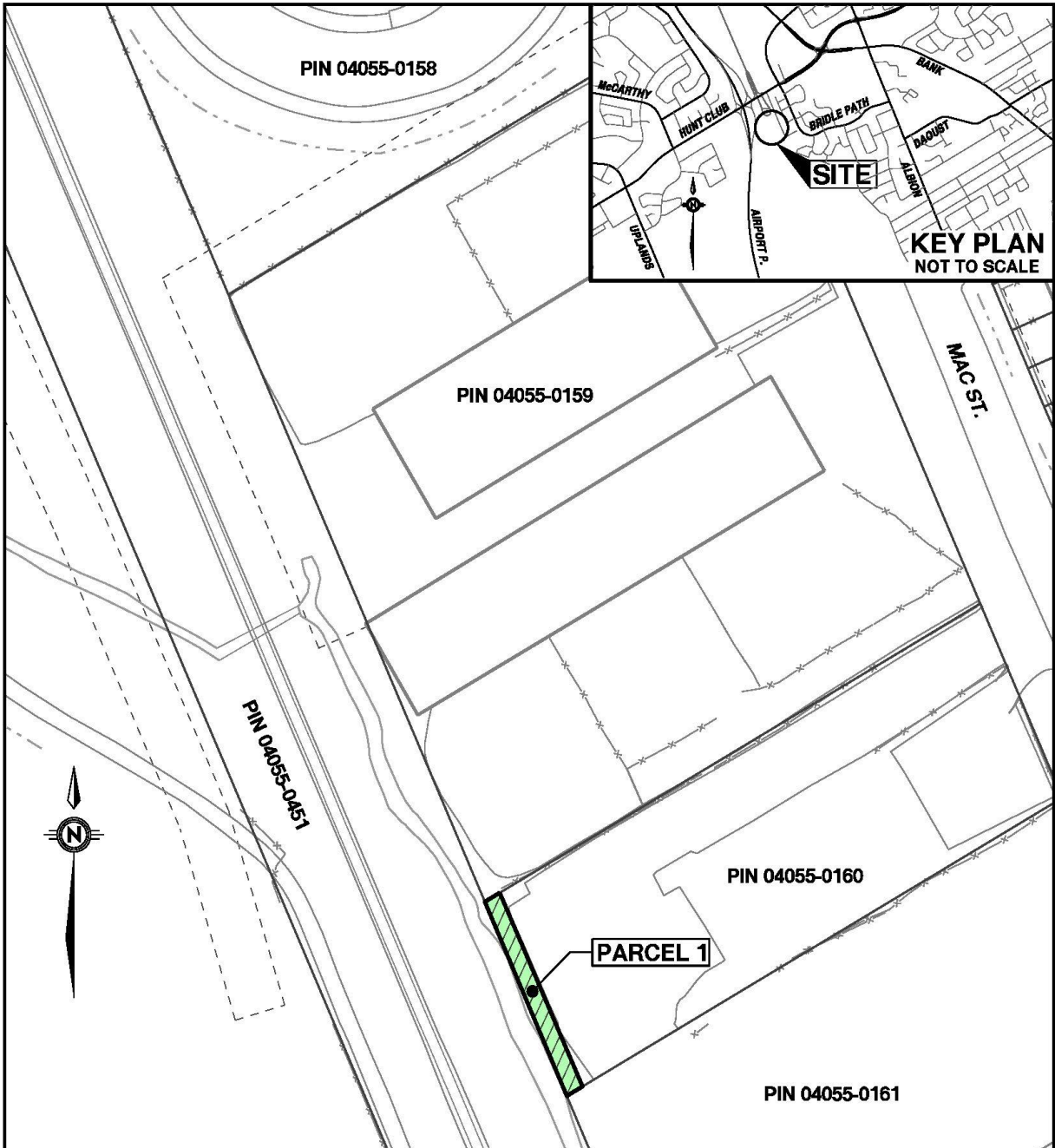


PARCEL	PART OF PIN	AREA (Sq. m)	ACQUISITION
1	15975-0000	244	PERMANENT

TRILLIUM LINE - PROPERTY SKETCHES


OWNER			CAD BY: M. Willison
			CHECKED BY: W.A. Harper
SCALE 1:750 (Metric)	DATE: OCT. 28, 2016	AREA: AS SHOWN	MS No.: 18692-PRP_054.dgn

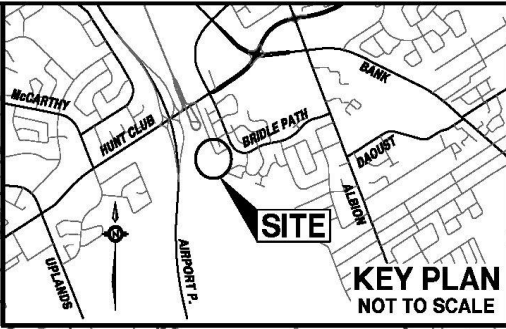
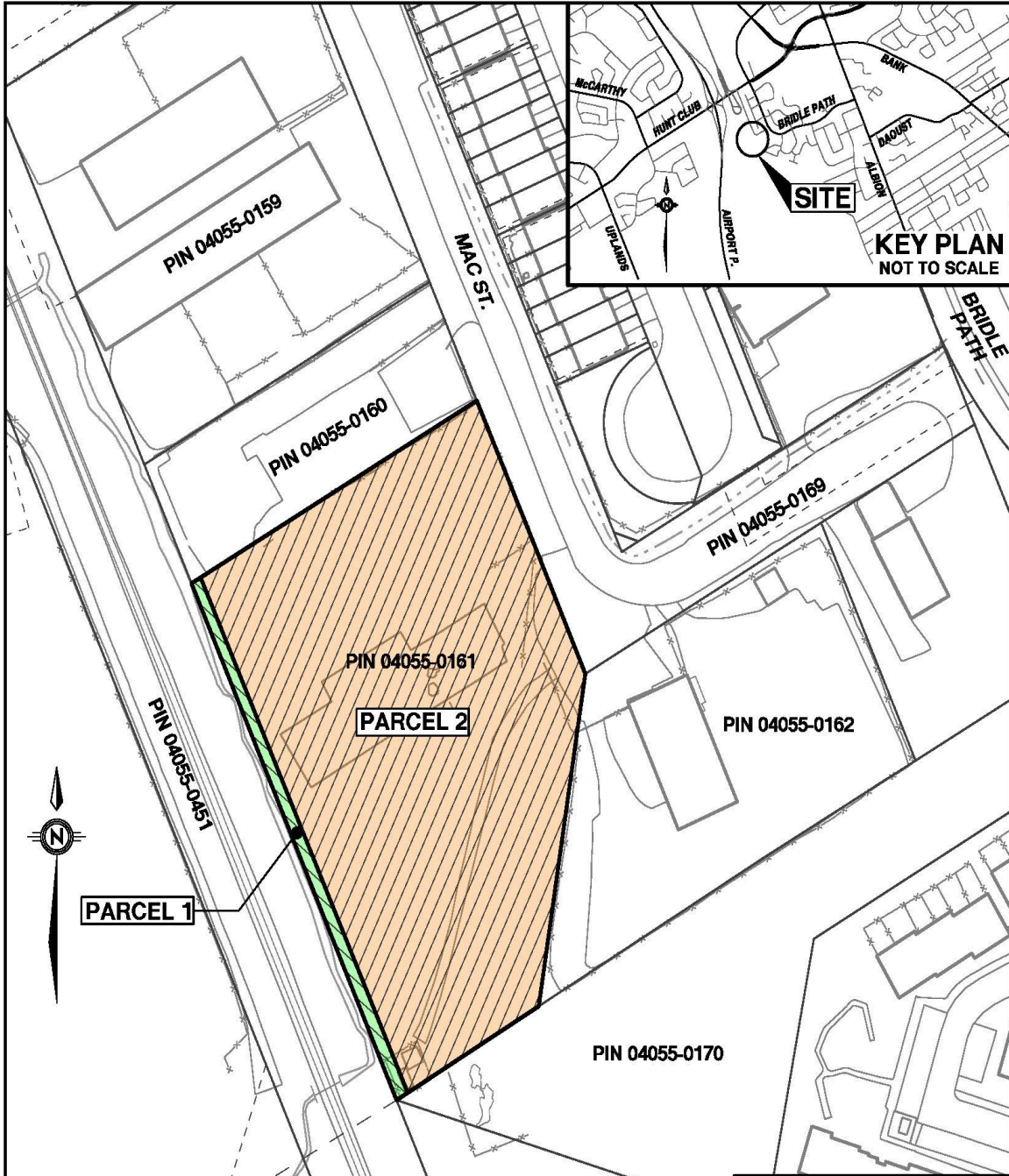
Ottawa
 PLANNING, INFRASTRUCTURE
 & ECONOMIC DEVELOPMENT
 DEPARTMENT
 SURVEYS & MAPPING UNIT



PARCEL	PART OF PIN	AREA (Sq. m)	ACQUISITION
1	04055-0160	79	FEE SIMPLE

CAUTION:
 BOUNDARY AND TOPOGRAPHICAL
 INFORMATION SHOWN ON THIS SKETCH
 MAY NOT BE CURRENT AND ARE
 NOT BASED ON AN ACTUAL SURVEY

TRILLIUM LINE - PROPERTY SKETCHES				 PLANNING, INFRASTRUCTURE AND ECONOMIC DEVELOPMENT DEPARTMENT SURVEYS AND MAPPING UNIT
OWNER		CAD BY: M. Willison/J. Mulse		
		CHECKED BY: W.A. Harper		
SCALE 1:750 (Metric)	DATE: MAY, 2017	AREA: AS SHOWN	MS No. 18692-PRP_058c.dgn	



PARCEL	PART OF PIN	AREA (Sq. m)	ACQUISITION
1		397	FEE SIMPLE
2	04055-0161	9430	TEMPORARY EASEMENT

PIN 04055-0171

CAUTION:
BOUNDARY AND TOPOGRAPHICAL
INFORMATION SHOWN ON THIS SKETCH
MAY NOT BE CURRENT AND ARE
NOT BASED ON AN ACTUAL SURVEY

TRILLIUM LINE - PROPERTY SKETCHES

OWNER	CAD BY: M. Willison/J. Mulse		
	CHECKED BY: W.A. Harper		
SCALE 1:1250 (Metric)	DATE: MAY, 2017	AREA: AS SHOWN	MS No. 18692-PRP_059b.dgn

Ottawa
PLANNING, INFRASTRUCTURE AND
ECONOMIC DEVELOPMENT
DEPARTMENT
SURVEYS AND MAPPING UNIT

Schedule "C"

Confederation Line – East

All right, title and interest in the following lands:

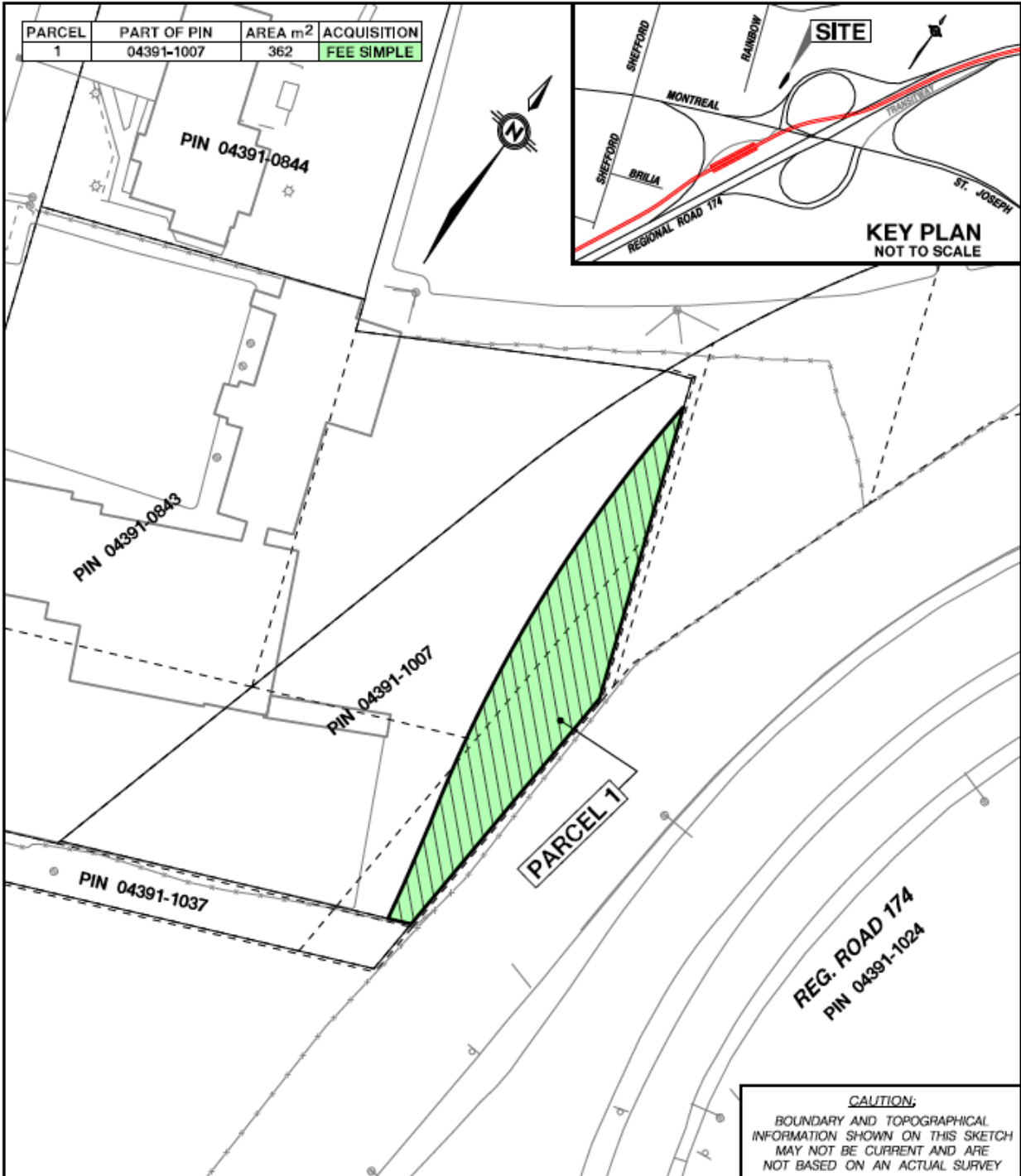
39. Part of PIN 04391-1007 (LT), PART OF LOT 15 CONCESSION 1, OTTAWA FRONT, GLOUCESTER, PART 1 PLAN 4R18846; CLOSED BY OC282644; OTTAWA; SUBJECT TO AN EASEMENT IN GROSS OVER PART OF LOT 15 CONCESSION 1, OTTAWA FRONT, GLOUCESTER, PART 6 PLAN 4R27933 CLOSED BY BYLAW OC282644 AS IN OC1599052 designated as Parcel 1 on drawing 18695-PRP_006a.dgn
40. Part of PIN 04363-0065 (LT), PCL 42-1, SEC 4M-422; BLK 42, PLAN 4M-422, SUBJECT TO NS222573 (LT356142); GLOUCESTER designated as Parcel 1 on drawing 18695-PRP_009.dgn
41. Part of PINs 15353-0001 (LT) through to 15353-0045 (LT) inclusive, being part of the common elements on CARLETON CONDOMINIUM PLAN NO. 353; PART LOT 15, CONCESSION 1 OF, PARTS 1 AND 2 4R5402, AS IN SCHEDULE 'A' OF DECLARATION LT481561, SUBJECT TO LT483009; GLOUCESTER, designated as Parcels 1 and 2 on drawing 18695-PRP_013b.dgn

An estate, right or interest, for a limited time in the nature of a temporary easement for a period of sixty-one (61) months in the following lands:

42. Part of PIN 04363-0007 (LT) PCL 21-25, SEC GL-2OF; PART LOT 21, CONCESSION 2OF, PT RDAL BTN LTS 20, 21, CONCESSION 2OF, CLOSED BY BYLAW CT129546 (LT430246), PART 1, 4R7647; TOGETHER WITH LT744156; GLOUCESTER designated as Parcel 1 on drawing 18695-PRP_007.dgn
43. Part of PIN 04363-0065 (LT) PCL 42-1, SEC 4M-422; BLK 42, PLAN 4M-422, SUBJECT TO NS222573 (LT356142); GLOUCESTER designated as Parcel 2 on drawing 18695-PRP_009.dgn

SCHEDULE "C-1"

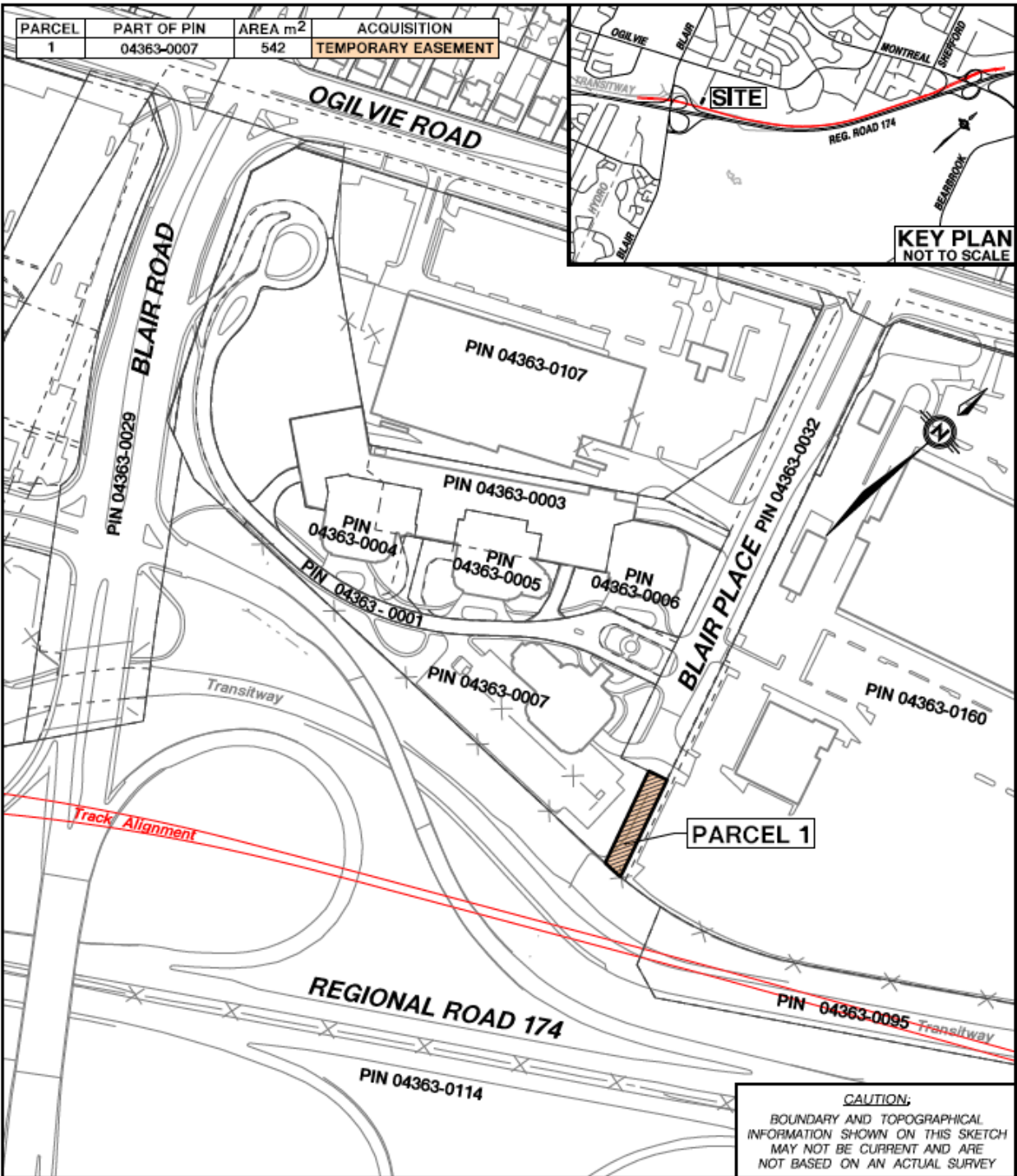
Confederation Line - East



EASTERN LRT - PROPERTY SKETCHES

OWNER		CAD BY: J. MUISE	
		CHECKED BY: W.A. HARPER	
SCALE 1:500 (METRIC)	DATE: JAN., 2017	AREA: AS SHOWN	MS No.: 18695-PRP_006a.dgn

Ottawa
PLANNING, INFRASTRUCTURE AND
ECONOMIC DEVELOPMENT
DEPARTMENT
SURVEYS AND MAPPING UNIT



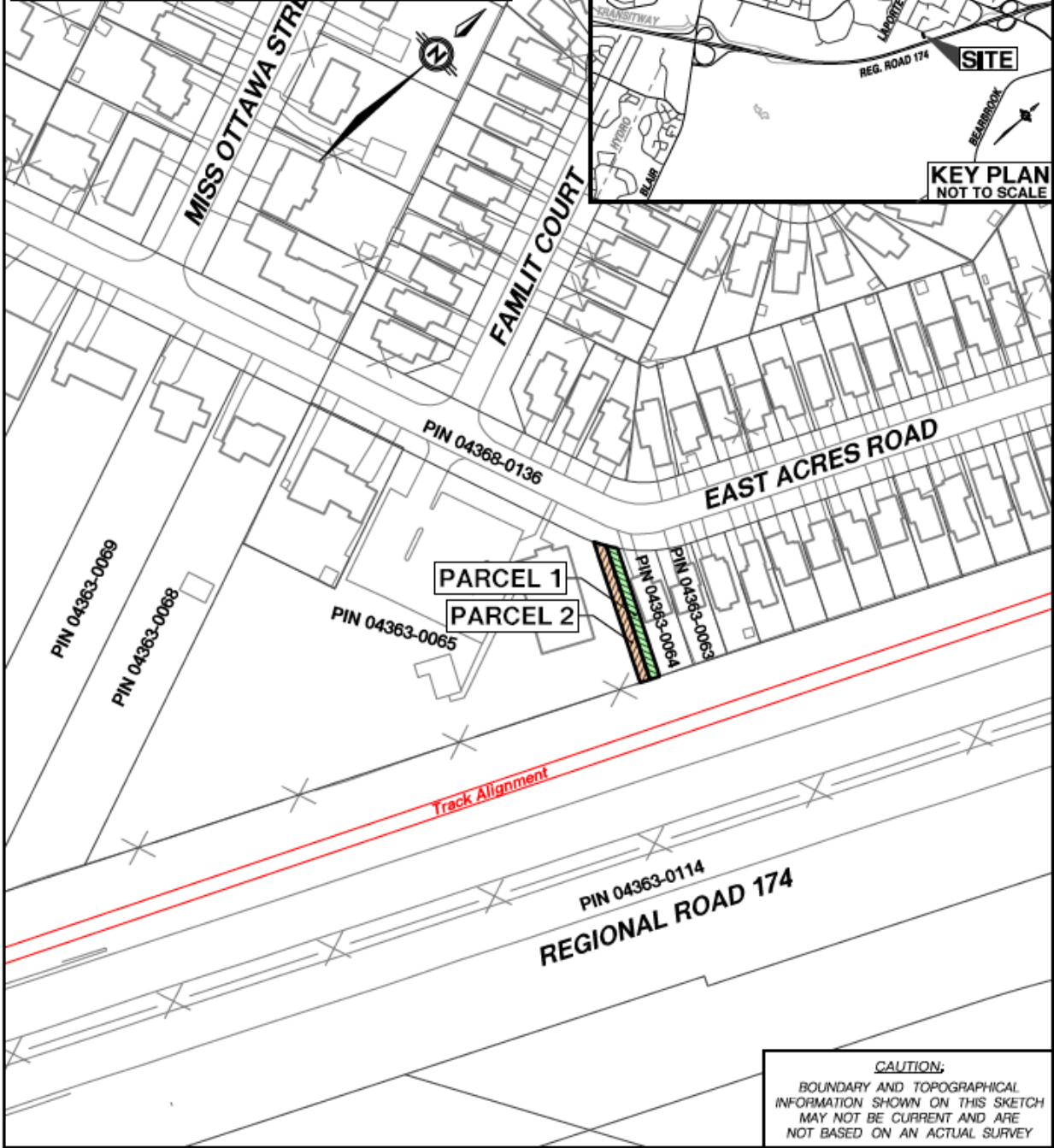
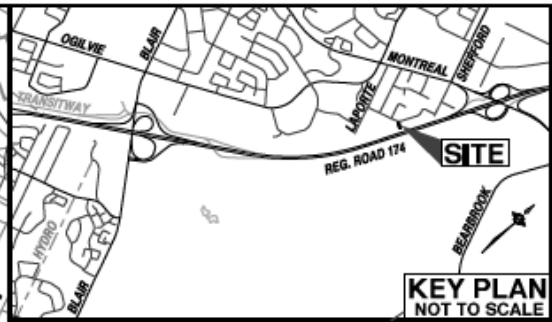
EASTERN LRT - PROPERTY SKETCHES

OWNER	CAD BY: J. MUISE		
	CHECKED BY: W.A. HARPER		
SCALE 1:2500 (METRIC)	DATE: DEC., 2016	AREA: AS SHOWN	MS No.: 18695-PRP_007.dgn



PLANNING, INFRASTRUCTURE AND ECONOMIC DEVELOPMENT
DEPARTMENT
SURVEYS AND MAPPING UNIT

PARCEL	PART OF PIN	AREA m ²	ACQUISITION
1	04363-0065	122	FEE SIMPLE
2		131	TEMPORARY EASEMENT

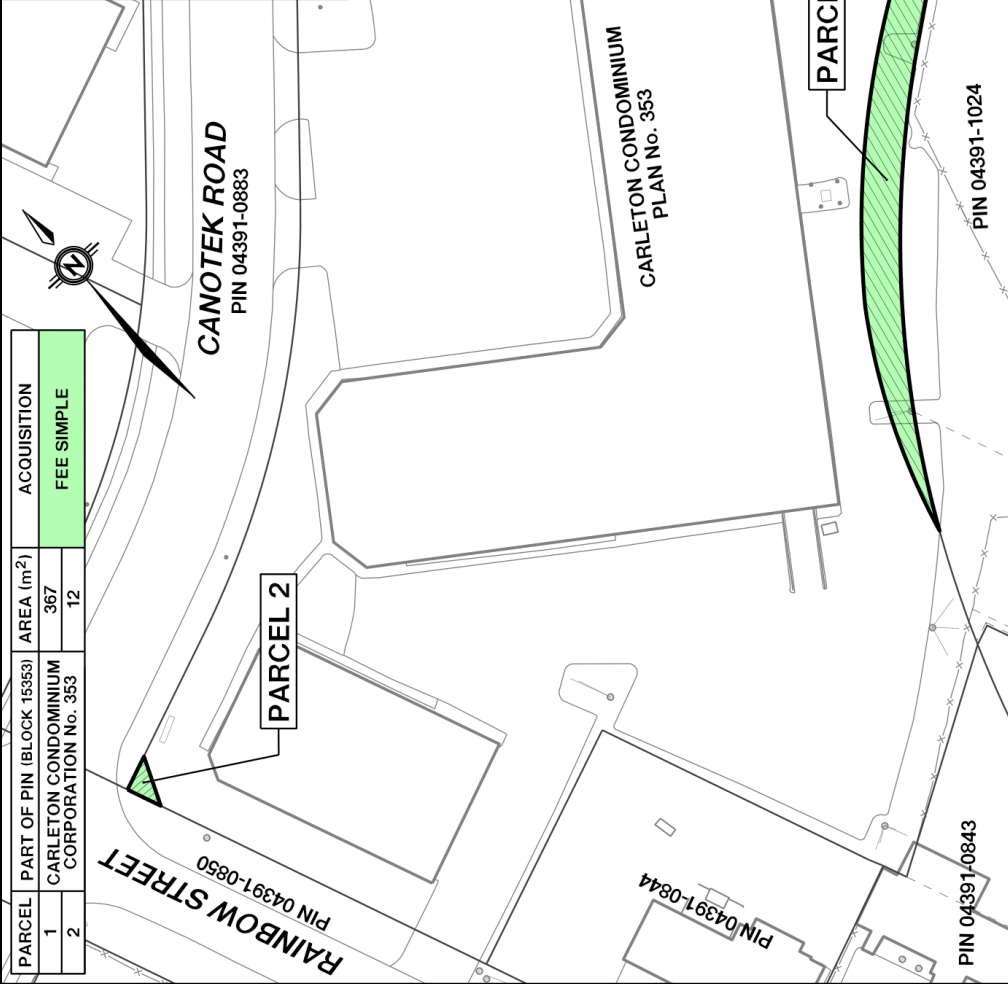
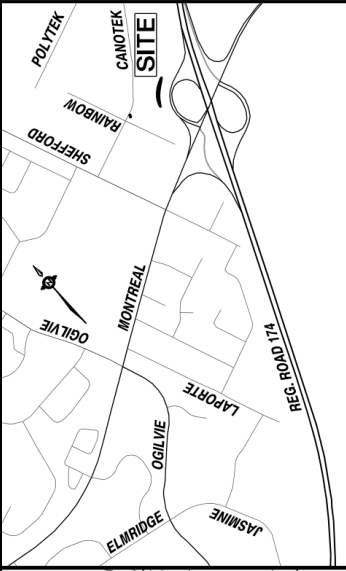


CAUTION:
BOUNDARY AND TOPOGRAPHICAL
INFORMATION SHOWN ON THIS SKETCH
MAY NOT BE CURRENT AND ARE
NOT BASED ON AN ACTUAL SURVEY

EASTERN LRT - PROPERTY SKETCHES

OWNER		CAD BY: J. MUISE	
		CHECKED BY: W.A. HARPER	
SCALE 1:1500 (METRIC)	DATE: DEC., 2016	AREA: AS SHOWN	MS No.: 18695-PRP_009.dgn





CAUTION:
BOUNDARY AND TOPOGRAPHICAL
INFORMATION SHOWN ON THIS SKETCH
MAY NOT BE CURRENT AND ARE
NOT BASED ON AN ACTUAL SURVEY

PARCEL	PART OF PIN (BLOCK 15353)	AREA (m ²)	ACQUISITION
1	CARLETON CONDOMINIUM CORPORATION No. 353	367	FEE SIMPLE
2		12	

EASTERN LRT - PROPERTY SKETCHES

PLANNING, INFRASTRUCTURE AND
ECONOMIC DEVELOPMENT
DEPARTMENT
SURVEYS AND MAPPING UNIT



OWNER	CAD BY: J. MUISE
	CHECKED BY: W.A. HARPER
SCALE 1:750 (METRIC)	MS No.: 18695-PRP_013b.dgn
MAY, 2017	AREA: AS SHOWN

