

January 8, 2021

The City of Ottawa
Attention: Rick O'Connor
110 Laurier Ave West (1st Floor)
Ottawa, ON K1P 1J1

Re: SOURCE PROTECTION PLAN AMENDMENT

Notice Seeking Municipal Council Resolution under S. 34(2) of the *Clean Water Act*
And
Pre-Consultation Notice under Ontario Regulation 287/07

Dear Council and Staff,

The Mississippi and Rideau Source Protection Authorities (SPAs) are proposing an amendment to the Mississippi-Rideau Source Protection Plan under Section 34 of the *Clean Water Act*.

Lemieux Island Intake

The Lemieux Intake Improvement Project was initiated due to issues related to frazil ice buildup at the existing intake. Frazil ice can block the intake pipe and associated screening, resulting in unplanned Water Purification Plant shutdowns or significantly restricted plant flows, which put the water supply at risk. A new intake is proposed, and the existing intake will be maintained as a backup.

Purpose of Amendment

Any proposed change to the Mississippi-Rideau Source Protection Plan or Assessment Report(s) is required to undergo a Section 34 Amendment under the *Clean Water Act*.

The amendment will include updated mapping of the affected vulnerable areas in the Source Protection Plan. It will also include updated chapters for the Rideau Valley and Mississippi Valley Assessment Reports with mapping and technical information.

Purpose of this Notice

This notice is to:

1. Seek a municipal council resolution to endorse the proposed amendment (required under Section 34 of the *Clean Water Act*).
2. Provide a pre-consultation comment opportunity for municipalities, who are responsible for implementing policies prior to broader public consultation. Pursuant to Ontario Regulation 287/07, this opportunity must be provided to all bodies responsible for implementing policies in the Source Protection Plan.

Information Enclosed with this Notice

- Appendix 1: Map of the proposed Lemieux Island Intake Protection Zone
- Appendix 2: A list of policies your municipality is responsible for implementing
- Appendix 3: A list of policies that will apply within the IPZ

Information to Follow

Once the proposed amendment draft is finalized, following the receipt of the remaining technical work, it will be circulated for additional comment as required under S. 34 of the *Clean Water Act*.

**We request your comments, if any, by March 1, 2021.
Please copy us on the municipal council resolution by March 1, 2021.**

Thank you for your input, we look forward to engaging with you on this matter.

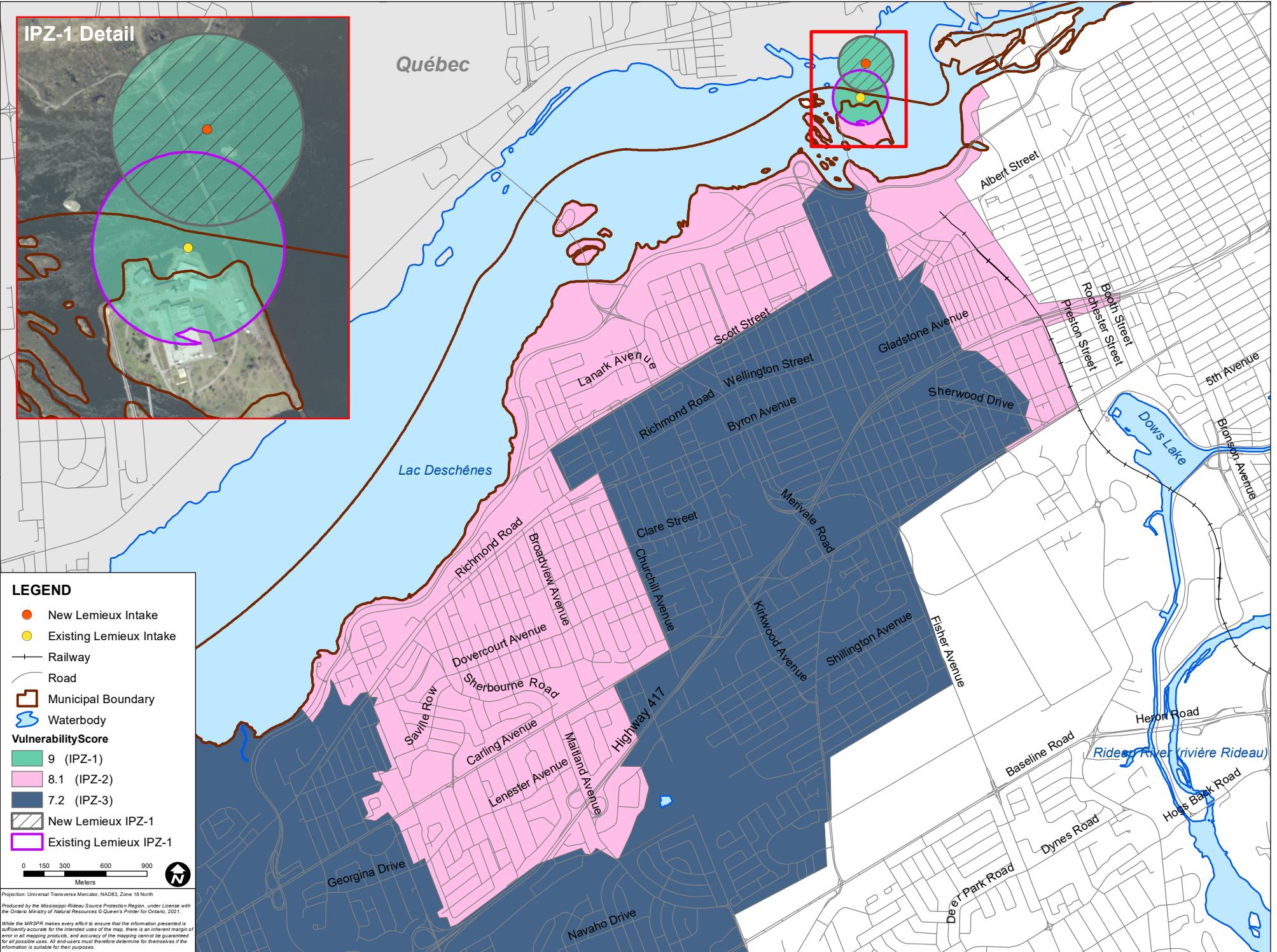
Sincerely,



Marika Livingston
Project Manager
Mississippi-Rideau Source Protection Region
marika.livingston@mrsourcewater.ca
(613) 692-3571 x1148

CC: Mary Wooding, Source Water Protection Liaison Officer, Ministry of the Environment, Conservation and Parks

Appendix 1: Map of the proposed Lemieux Island Intake Protection Zone



Appendix 2: Policy Information

Appendix C2 – Policy Codes Summarized by Implementing Body and Compliance/Target Date							
(based on drinking water systems in the 2011 Assessment Reports)							
Implementing Body	Compliance Date for Legally Binding Policies / Target Date for Non-legally Binding Policies						
	Immediate ¹	6 months	1 year	2 years	3 years ²	5 years	Monitoring Policies
MUNICIPAL							
Ottawa, City of	WASTE-4-LB-S57	SEW-3-LB	SEW-4-LB	EDU-3-NLB	WASTE-2-LB-S58	ADMIN-3-LB	MON-1-LB
	SEW-9-LB-PI/PA-MC		SEW-6-LB	EDU-4-NLB	SEW-11-LB-S58		MON-2-LB
	SEW-11-LB-S58		SALT-5-NLB		SEW-14-LB-S58		MON-3-NLB
<i>IPZ scored 8.1 & 9</i>	SEW-12-LB-S57		SALT-6-NLB		SALT-1-LB-S58		
<i>WHPA-A scored 10</i>	SEW-15-LB-PI/PA-MC		CORR-1-NLB		DNAPL-1-LB-S58		
<i>WHPA-B scored 10</i>	SEW-16-LB-S57		PATH-1-NLB		FUEL-1-LB-S58		
<i>WHPA-B scored 8</i>	SALT-2-LB-S57		EDU-1-LB		FUEL-6-LB-S58		
<i>WHPA-B & WHPA-C scored less than or = 6</i>	DNAPL-2-LB-S57		EDU-5-NLB		FERT-2-LB-S58		
	FUEL-1-LB-S58				PEST-4-LB-S58		
	FUEL-5-LB-S57				LIVE-2-LB-S58		
	FUEL-6-LB-S58				ASM-2-LB-S58		
	FERT-2-LB-S58				NASM-3-LB-S58		
	FERT-3-LB-S57				DEICE-1-LB-S57		
	PEST-5-LB-S57				ADMIN-1-LB		
	LIVE-2-LB-S58				ADMIN-2-LB		
	ASM-2-LB-S58				ADMIN-4-LB		
	NASM-3-LB-S58				ADMIN-5-LB		

**Appendix 3: Policy Codes Summarized by Vulnerable Area and Policy Intent
(all policies)**

(based on appendix C1 from the approved Mississippi-Rideau Source Protection Plan)

Vulnerable Area and Vulnerability Score	Policy Code		
	Prohibit	Manage	Encourage
Wellhead Protection Area (WHPA)			
IPZ scored 10	WASTE-3-LB-PI-MC	WASTE-1-LB-PI-MC	FUEL-3-NLB
	WASTE-4-LB-S57	WASTE-2-LB-S58	PEST-1-NLB
	SEW-9-LB-PI/PA-MC	SEW-1-LB	PEST-2-NLB
	SEW-12-LB-S57	SEW-2-LB	AQUA-2-NLB
	SEW-15-LB-PI/PA-MC	SEW-3-LB	CORR-1-NLB
	SEW-16-LB-S57	SEW-4-LB	CORR-2-NLB
	SALT-2-LB-S57	SEW-5-LB-PI-MC	EDU-2-NLB
	DNAPL-2-LB-S57	SEW-6-LB	EDU-3-NLB
	FUEL-5-LB-S57	SEW-7-LB-PI-MC	EDU-4-NLB
	FERT-3-LB-S57	SEW-8-LB-PI-MC	EDU-5-NLB
	PEST-5-LB-S57	SEW-13-LB-PI-MC	
	DEICE-1-LB-S57	SEW-14-LB-S58	
		SALT-1-LB-S58	
		SALT-3-LB ¹	
		SALT-4-LB ¹	
		DNAPL-1-LB-S58	
		FUEL-1-LB-S58	
		FUEL-2-LB-PI-MC	
		FUEL-4-NLB	
		FUEL-6-LB-S58	
		FERT-1-LB-PI-MC	
		FERT-2-LB-S58 ³	
		PEST-3-LB-PI-MC	
		PEST-4-LB-S58	
		LIVE-1-LB-PI-MC	
		LIVE-2-LB-S58	
		ASM-1-LB-PI-MC	
	ASM-2-LB-S58		
	NASM-1-LB-PI-MC		
	NASM-2-LB-PI-MC		
	NASM-3-LB-S58		
	AQUA-1-LB-PI-HR		
	EDU-1-LB		
IPZ scored 9	WASTE-3-LB-PI-MC	WASTE-1-LB-PI-MC	SALT-5-NLB
	WASTE-4-LB-S57	WASTE-2-LB-S58	SALT-6-NLB
	SEW-15-LB-PI/PA-MC	SEW-8-LB-PI-MC	PEST-1-NLB
	SEW-16-LB-S57	SEW-10-LB-PI-MC	PEST-2-NLB
	SALT-2-LB-S57	SEW-11-LB-S58	AQUA-2-NLB

	PEST-5-LB-S57 DEICE-1-LB-S57	SEW-13-LB-PI-MC SEW-14-LB-S58 SALT-1-LB-S58 SALT-3-LB ¹ SALT-4-LB ¹ PEST-3-LB-PI-MC PEST-4-LB-S58 LIVE-1-LB-PI-MC LIVE-2-LB-S58 ASM-1-LB-PI-MC ASM-2-LB-S58 NASM-1-LB-PI-MC NASM-2-LB-PI-MC NASM-3-LB-S58 AQUA-1-LB-PI-HR EDU-1-LB	CORR-1-NLB CORR-2-NLB EDU-2-NLB EDU-3-NLB EDU-4-NLB EDU-5-NLB
IPZ scored 8, 8.1	WASTE-3-LB-PI-MC WASTE-4-LB-S57 SEW-15-LB-PI/PA-MC SEW-16-LB-S57	WASTE-1-LB-PI-MC WASTE-2-LB-S58 SEW-8-LB-PI-MC SEW-10-LB-PI-MC SEW-11-LB-S58 SEW-13-LB-PI-MC SEW-14-LB-S58 PEST-3-LB-PI-MC ² LIVE-1-LB-PI-MC LIVE-2-LB-S58 ASM-1-LB-PI-MC ASM-2-LB-S58 NASM-1-LB-PI-MC NASM-2-LB-PI-MC NASM-3-LB-S58 EDU-1-LB	PEST-2-NLB ² CORR-1-NLB CORR-2-NLB EDU-2-NLB EDU-3-NLB EDU-4-NLB EDU-5-NLB

Administrative and monitoring polices are not included

¹Policy applies in Carleton Place, Perth, Smiths Falls, and Kemptville

²Policy does not apply in an IPZ scored 8

³Commercial fertilizer **application** is only subject to this policy if it occurs in the Munster WHPA scored 10