

**2 SETTLEMENT OF APPEALS TO OFFICIAL PLAN AMENDMENT 150
NATURAL HERITAGE SYSTEM SCHEDULES**

**RÈGLEMENT D'APPELS RELATIFS AUX ANNEXES SUR LE RÉSEAU DU
PATRIMOINE NATUREL DE LA MODIFICATION 150 AU PLAN OFFICIEL**

PLANNING COMMITTEE RECOMMENDATIONS, AS AMENDED

That Council endorse the proposed agreements with the appellants of the amendments made to Natural Heritage System Schedules L1, L2, and L3 in Official Plan Amendment 150 (OPA 150), as approved by Council on 26 November 2013, as described in this report including approval of Documents 1 (a new Annex 16 to the Official Plan) and revised Document 2 (modified Schedule S37 to Official Plan Amendment 150) (set out in supporting Document 1 below).

AGRICULTURE AND RURAL AFFAIRS COMMITTEE

That Council endorse the proposed agreements with the appellants of the amendments made to Natural Heritage System Schedules L1, L2, and L3 in OPA 150, as approved by Council on 26 November 2013 as described in this report, including approval of Document 1 (a new Annex 16 to the Official Plan).

**RECOMMANDATIONS DU COMITÉ DE L'URBANISME, TELLE QUE
MODIFIÉE**

Que le Conseil souscrive aux accords proposés avec les parties ayant interjeté appel des modifications apportées aux annexes L1, L2 et L3 de la modification 150 au Plan officiel (MPO 150), portant sur le réseau du patrimoine naturel, modifications approuvées par le Conseil le 26 novembre 2013, comme le décrit le présent rapport et comprenant l'approbation des documents 1 (nouvel appendice 16 du Plan officiel) et du document 2 révisé (annexe S37 modifiée de la modification 150 au Plan officiel) (comme l'indique le document 1 à l'appui ci-dessous).

**RECOMMANDATION DU COMITÉ DE L'AGRICULTURE ET DES AFFAIRES
RURALES**

Que le Conseil souscrive aux accords proposés avec les parties ayant interjeté appel des modifications apportées aux annexes L1, L2 et L3 de la MPO 150, portant sur le réseau du patrimoine naturel, modifications approuvées par le Conseil le 26 novembre 2013, comme le décrit le présent rapport et comprenant l'approbation du document 1 (nouvel appendice 16 du Plan officiel).

DOCUMENTATION/DOCUMENTATION

1. Document 1 - revised Document 2 (modified Schedule S37 to Official Plan Amendment 150)

Document 1 - Document 2 révisé (annexe S37 modifiée de la modification 150 au Plan officiel).

2. Director's Report, Planning Services, Planning, Infrastructure and Economic Development Department, dated March 11, 2019 (ACS2019-PIE-PS-0005)

Rapport de la directrice, Services de la planification, Direction générale de la planification, de l'Infrastructure et du développement économique, daté le 11 mars 2019 (ACS2019-PIE-PS-0005)

3. Extract of draft Minutes, Planning Committee, April 11, 2019

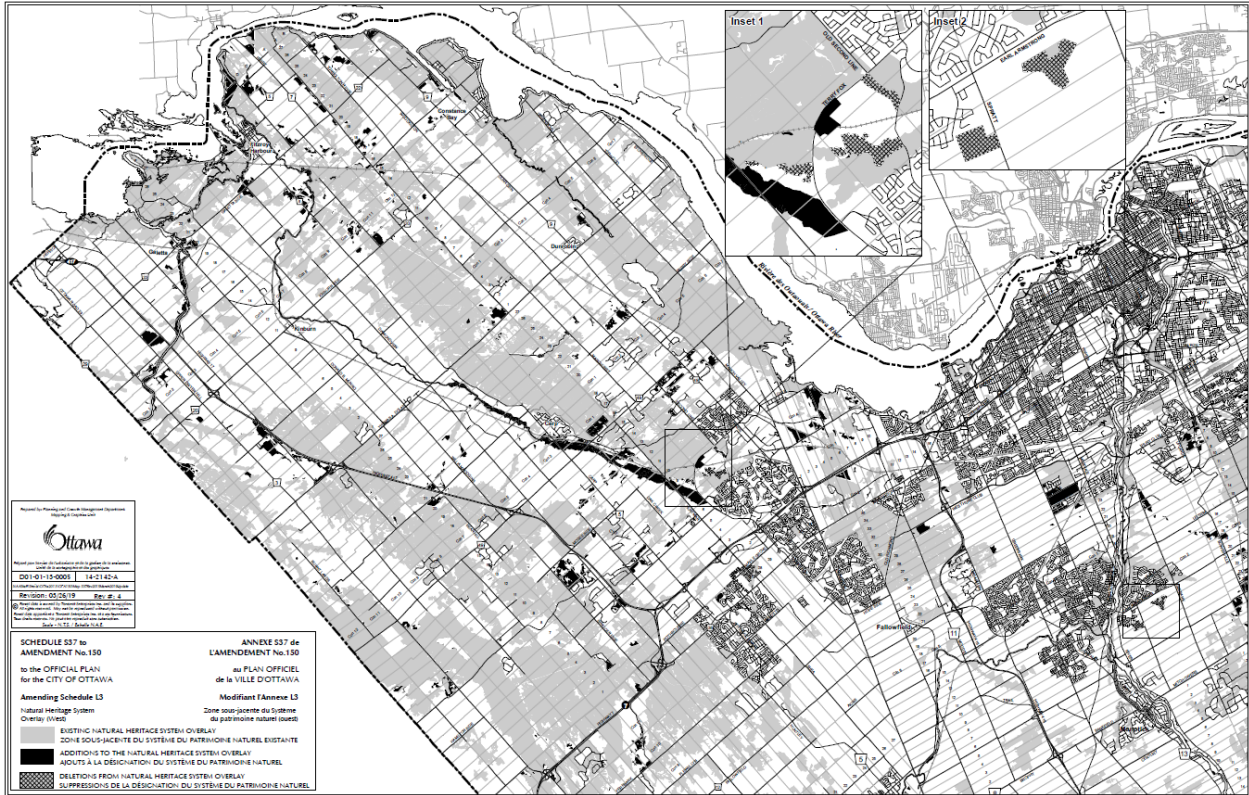
Extrait de l'ébauche du procès-verbal, Comité de l'urbanisme, le 11 avril 2019

4. Summary of Written and Oral Submissions to be issued separately with the Council agenda for its meeting of April 24, 2019, in the report titled, "Summary of Oral and Written Public Submissions for Items Subject to Bill 73 'Explanation Requirements' at the City Council meeting of April 10, 2019".

Résumé des observations écrites et orales à distribuer séparément avec

l'ordre du jour de la réunion du 24 avril 2019 du Conseil, dans le rapport intitulé « Résumé des observations orales et écrites du public sur les questions assujetties aux 'exigences d'explication' aux termes du projet de loi 73, à la réunion du Conseil municipal prévue le 10 avril 2019 ».

Document 1 - Revised Document 2 (modified Schedule S37 to Official Plan Amendment 150)



**Agriculture and Rural Affairs
Committee
Report 3
April 10, 2019**

13

**Comité de l'agriculture et des
affaires rurales
Rapport 3
le 10 avril 2019**

**Report to
Rapport au:**

**Planning Committee / Comité de l'urbanisme
March 28, 2019 / 28 mars 2019**

and / et

**Agriculture and Rural Affairs Committee / Comité de l'agriculture et des affaires
rurales
April 4, 2019 / 4 avril 2019**

**and Council / et au Conseil
April 10, 2019 / 10 avril 2019**

**Submitted on March 18, 2019
Soumis le 18 mars 2019**

**Submitted by
Soumis par:
John Smit,**

Director / directeur

**Economic Development and Long Range Planning / Développement économique
et planification à long terme**

Contact Person

Report Author / Auteur du rapport:

**Nick Stow, Senior Planner/Urbaniste, Natural Systems and Rural Affairs /
Systèmes naturels et Affaires rurales
613-580-2424, 13000, Nick.Stow@ottawa.ca**

**Ward: CITY WIDE / À L'ÉCHELLE DE LA
VILLE**

File Number: ACS2019-PIE-EDP-0014

SUBJECT: Settlement of Appeals to Official Plan Amendment 150 Natural Heritage System Schedules

OBJET: Règlement d'appels relatifs aux annexes sur le réseau du patrimoine naturel de la modification 150 au Plan officiel

REPORT RECOMMENDATIONS

- 1. That the Planning Committee Recommend that Council endorse the proposed agreements with the appellants of the amendments made to Natural Heritage System Schedules L1, L2, and L3 in Official Plan Amendment 150 (OPA 150), as approved by Council on 26 November 2013, as described in this report including approval of Documents 1 (a new Annex 16 to the Official Plan) and 2 (modified Schedule S37 to Official Plan Amendment 150).**
- 2. That the Agriculture and Rural Affairs Committee Recommend that Council endorse the proposed agreements with the appellants of the amendments made to Natural Heritage System Schedules L1, L2, and L3 in OPA 150, as approved by Council on 26 November 2013 as described in this report, including approval of Document 1 (a new Annex 16 to the Official Plan).**

RECOMMANDATIONS DU RAPPORT

- 1. Que le Comité de l'urbanisme recommande au Conseil de souscrire aux accords proposés avec les parties ayant interjeté appel des modifications apportées aux annexes L1, L2 et L3 de la modification 150 au Plan officiel (MPO 150), portant sur le réseau du patrimoine naturel, modifications approuvées par le Conseil le 26 novembre 2013, comme le décrit le présent rapport et comprenant l'approbation des documents 1 (nouvel appendice 16 du Plan officiel) et 2 (annexe S37 modifiée de la modification 150 au Plan officiel).**
- 2. Que le Comité de l'agriculture et des affaires rurales recommande au Conseil de souscrire aux accords proposés avec les parties ayant interjeté appel des modifications apportées aux annexes L1, L2 et L3 de la MPO 150, portant sur le réseau du patrimoine naturel, modifications approuvées par le Conseil le 26 novembre 2013, comme le décrit le présent rapport et comprenant l'approbation du document 1 (nouvel appendice 16 du Plan officiel).**

BACKGROUND

Official Plan Schedules L1, L2, and L3 illustrate those features of Ottawa's natural heritage system that can be adequately displayed at a City-wide scale. Council added the schedules to the Official Plan in OPA 109 on 24 October 2012, in response to direction in the Ontario Municipal Board decision on OPA 76 (OMB PL#100206, April 26, 2012).

OPA 150 subsequently modified Schedules L1, L2, and L3 to include natural linkage features, based on a Natural Landscape Linkage Analysis conducted by City staff (Document 11, OPA 150). The Natural Landscape Linkage Analysis and modifications to the schedules were conditions of a settlement with the Greenspace Alliance of its appeal to OPA 76 (OMB PL#100206).

Three parties appealed the modifications to Schedules L1, L2, and L3 in OPA 150. The Greenspace Alliance argued that the addition of discrete "linkage features" – chiefly small woodland areas – did not respect the intent of its settlement with the City. It argued that the broader "landscape linkages" identified in the Landscape Linkage Analysis should be identified and included within the natural heritage system on the schedules. Richcraft Homes and Urbandale Corporation disagreed with the identification of specific linkage features on Schedule L3.

DISCUSSION

Proposed agreements have been reached with the appellants to the changes in Official Plan Schedules L1, L2, and L3 made in OPA 150. The agreement with the Greenspace Alliance would introduce a new Annex 16 – Core Natural Areas and Natural Landscape Linkages (see Document 1) to the Official Plan. The agreement with Richcraft and Urbandale would revise the natural linkage features added to Schedule L3 through OPA 150 (see Document 2) to remove an area identified for development in the KNL Phase 8 Plan of Subdivision and to conform to the changes to Official Plan Schedule B approved in Kanata Highlands Urban Expansion Area Official Plan Amendment (OPA 222).

Annex 16

The Greenspace Alliance has agreed to withdraw its appeal of OPA 150 in return for the display of the Natural Landscape Linkage mapping as Annex 16 to the Official Plan. As an annex, the mapping would not form part of the Official Plan, but would be attached to it for information purposes.

City staff use the Natural Landscape Linkage mapping in the review of planning and development applications. It appears as Appendix E in the recently approved Significant Woodlands Guidelines, where it assists in interpretation of the linkage criteria. Staff also use the mapping to guide voluntary natural stewardship and restoration projects (e.g., the Carp River Wetland Habitat Restoration project) and voluntary environmental land acquisitions (e.g., the partnership with Ducks Unlimited Canada on acquisition of the Honeywell property in the Carp Hills).

Attaching Annex 16 to the Official Plan would not affect current land designations or land uses. It would result in greater transparency, by making the Natural Landscape Linkage mapping more accessible to the public.

Rejection of the proposed settlement would result in the appeal by the Greenspace Alliance going forward to the Local Planning Appeals Tribunal, where the appellant would be asking for the inclusion of the full linkage corridors within the natural heritage system overlay on Schedules L1, L2, and L3.

Schedule L3

Staff have reviewed and support the requested changes by Richcraft and Urbandale to remove the identification of several small features on their properties in Schedule L3. The features in question lie within the Kanata Highlands Concept Plan area (formerly Urban Expansion Study Area 2) and KNL Phase 8. In both cases, the changes reflect the natural heritage system as identified in City-approved plans for the areas. The revisions have no planning implications.

RURAL IMPLICATIONS

The proposed agreements have no implications for the rural area. The changes to Schedule L3 apply in the urban area. Annex 16 applies to the rural area, but is attached to the Official Plan only for information purposes.

CONSULTATION

The proposed agreement has been provided to the other appellants to the natural heritage policies in OPA 150.

COMMENTS BY THE WARD COUNCILLORS

This is a city-wide report - not applicable.

LEGAL IMPLICATIONS

There are no legal impediments to the adoption of the recommendations in the report.

RISK MANAGEMENT IMPLICATIONS

There are no risk management implications associated with this report.

ASSET MANAGEMENT IMPLICATIONS

There are no asset management implications associated with this report.

FINANCIAL IMPLICATIONS

There are no direct financial implications.

ACCESSIBILITY IMPACTS

Attachment of Annex 16 to the Official Plan will make the Natural Landscape Linkage mapping more accessible to the public.

ENVIRONMENTAL IMPLICATIONS

There are no environmental implications.

TERM OF COUNCIL PRIORITIES

Resolution of the appeals to the natural heritage policies in OPA 150 supports the following 2015 – 2018 Term of Council priorities:

- Environmental Sustainability;
- A Healthy and Caring Community;
- Planning and Decisions Making.

SUPPORTING DOCUMENTATION

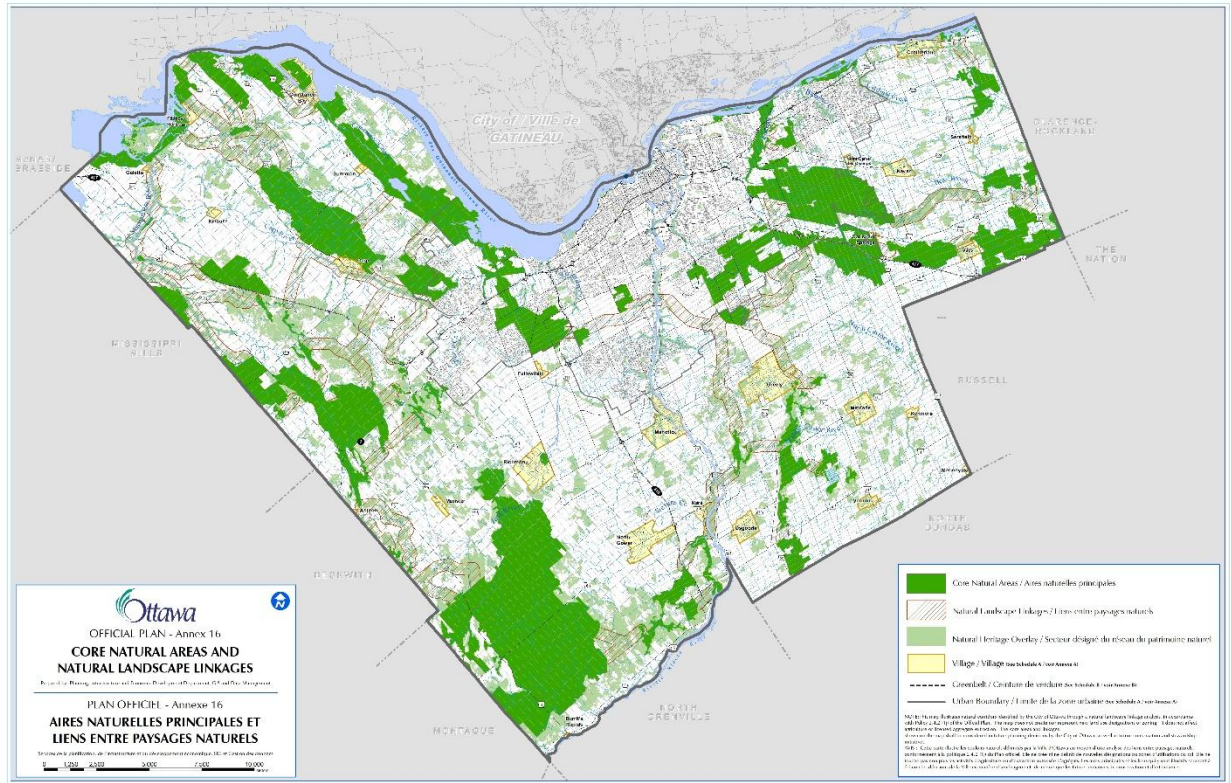
Document 1 Annex 16

Document 2 Schedule S37 to Official Plan Amendment 150

DISPOSITION

Legal Services will finalize the agreements and seek OMB approval for Annex 16 and Schedule S37.

Document 1 - Annex 16



Document 2 - Schedule S37 to Official Plan Amendment 150

