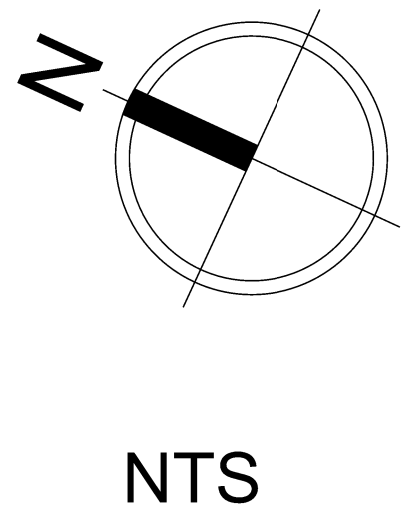
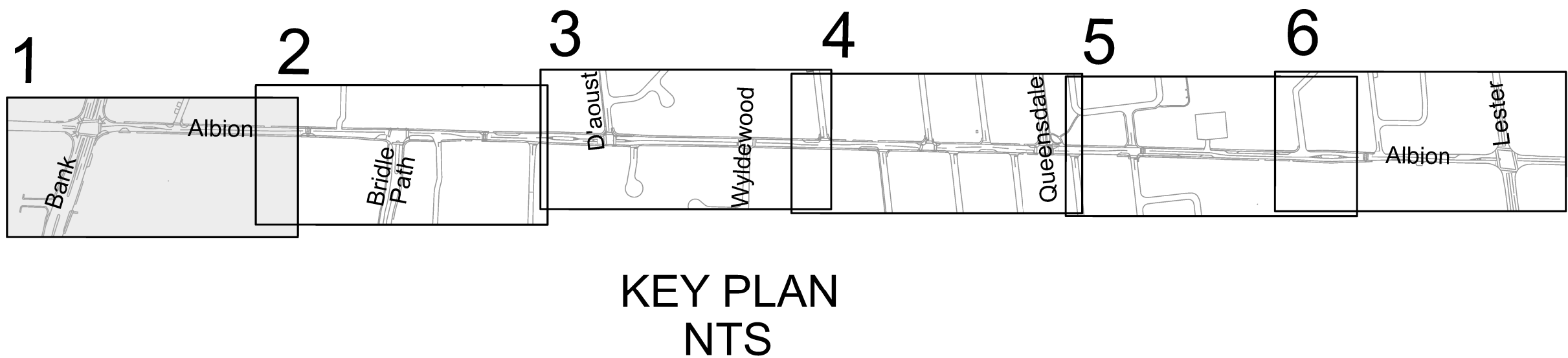


- Bank / Albion Intersection**
- Reduced attractiveness of Albion as cut-through route by:
 - Reducing length of eastbound right turn lane
 - Reduced weaving conflicts through curb adjustments to the south side of Bank
 - Reduced pedestrian crossing distance for south crosswalk
 - Potential improvement to pedestrian visibility / safety through investigating use of advanced green displays

- General Notes**
- All recommended measures to comply with the Accessibility Design Standards
 - Tactile delineators to be included between cycle tracks and sidewalks
 - Pavement quality to be assessed during detailed design
 - Any recommended changes to bus stop locations will need to be reviewed/approved by the ward Councillor, and are for review/discussion purposes only at this time
 - Unless otherwise indicated, the preferred bulb-out treatment is mountable/raised curb and is to be reviewed during detailed design

LEGEND

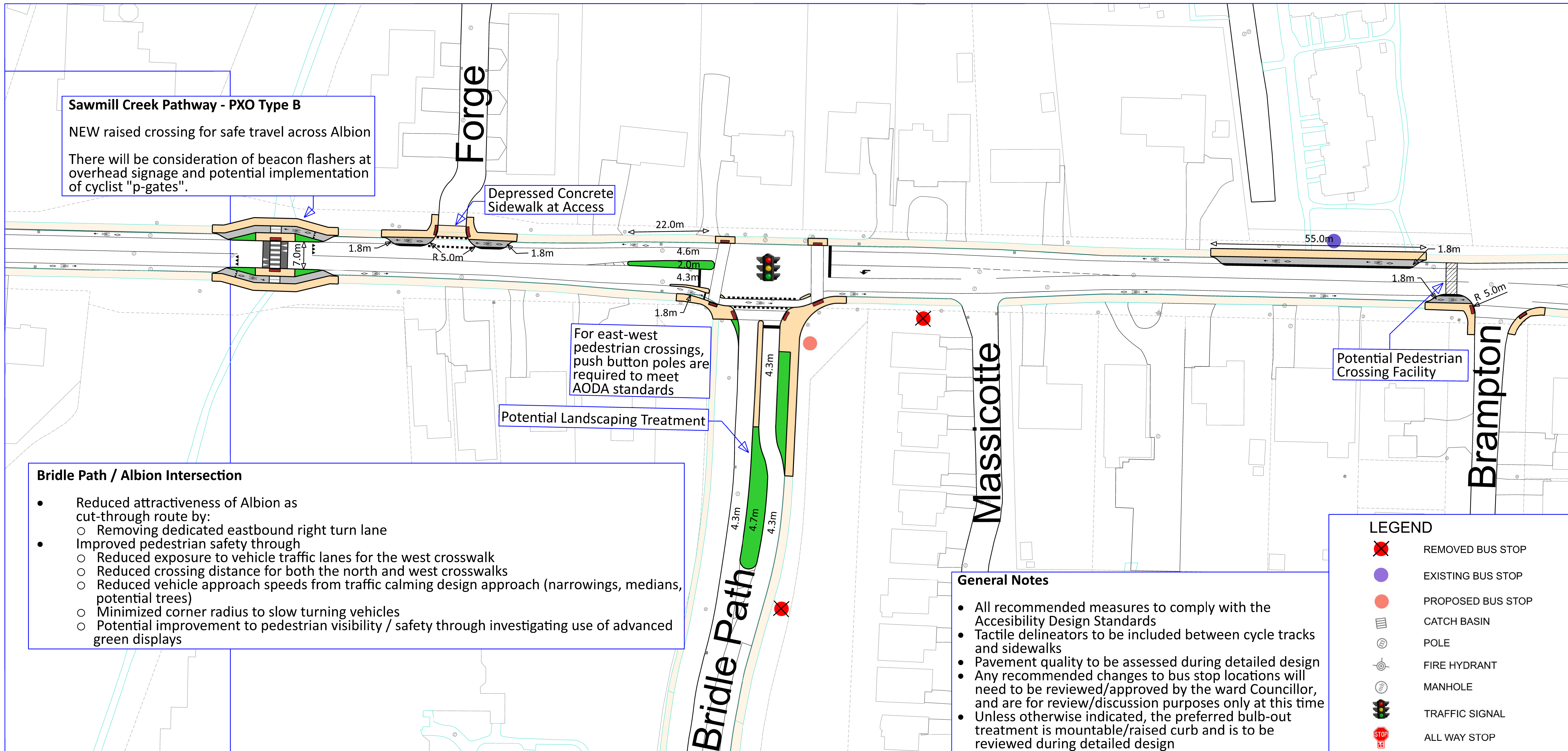
	REMOVED BUS STOP
	EXISTING BUS STOP
	PROPOSED BUS STOP
	CATCH BASIN
	POLE
	FIRE HYDRANT
	MANHOLE
	TRAFFIC SIGNAL
	ALL WAY STOP



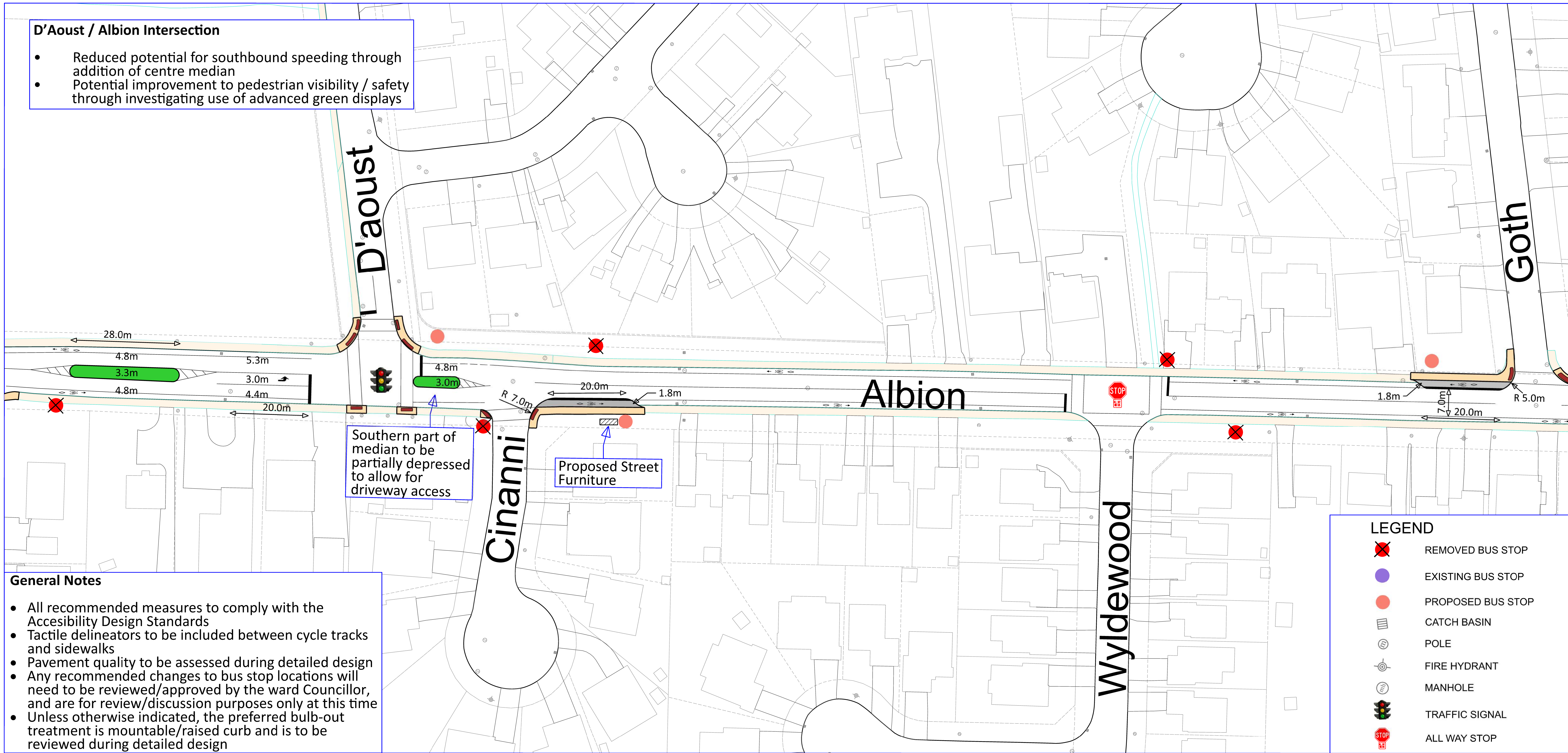
Albion Road
Traffic Study
Recommended Plan

Bank Street to Lester Road

Reviewed By: Justin Swan	
Completed By: Jason Endrawis	
Scale: NTS	Date: January 2021



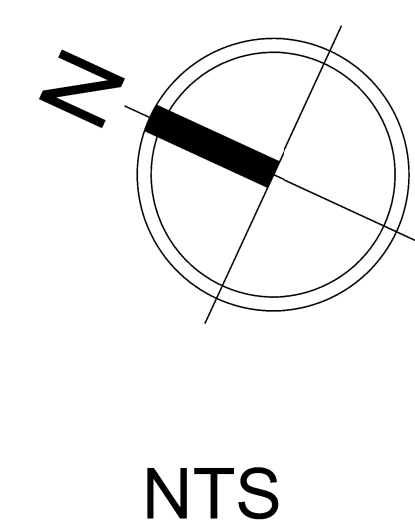
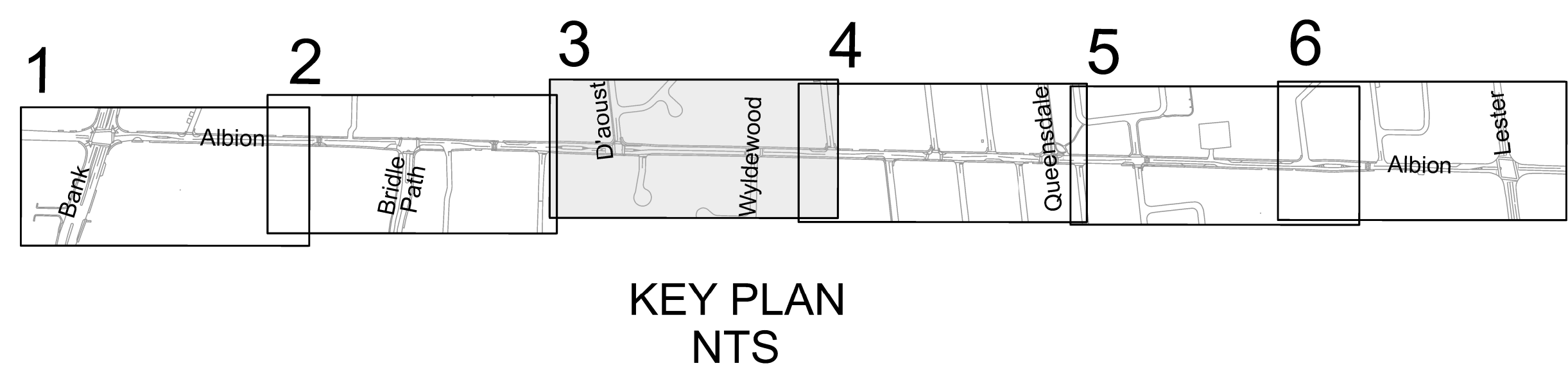
- D'Aoust / Albion Intersection**
- Reduced potential for southbound speeding through addition of centre median
 - Potential improvement to pedestrian visibility / safety through investigating use of advanced green displays



- General Notes**
- All recommended measures to comply with the Accessibility Design Standards
 - Tactile delineators to be included between cycle tracks and sidewalks
 - Pavement quality to be assessed during detailed design
 - Any recommended changes to bus stop locations will need to be reviewed/approved by the ward Councillor, and are for review/discussion purposes only at this time
 - Unless otherwise indicated, the preferred bulb-out treatment is mountable/raised curb and is to be reviewed during detailed design

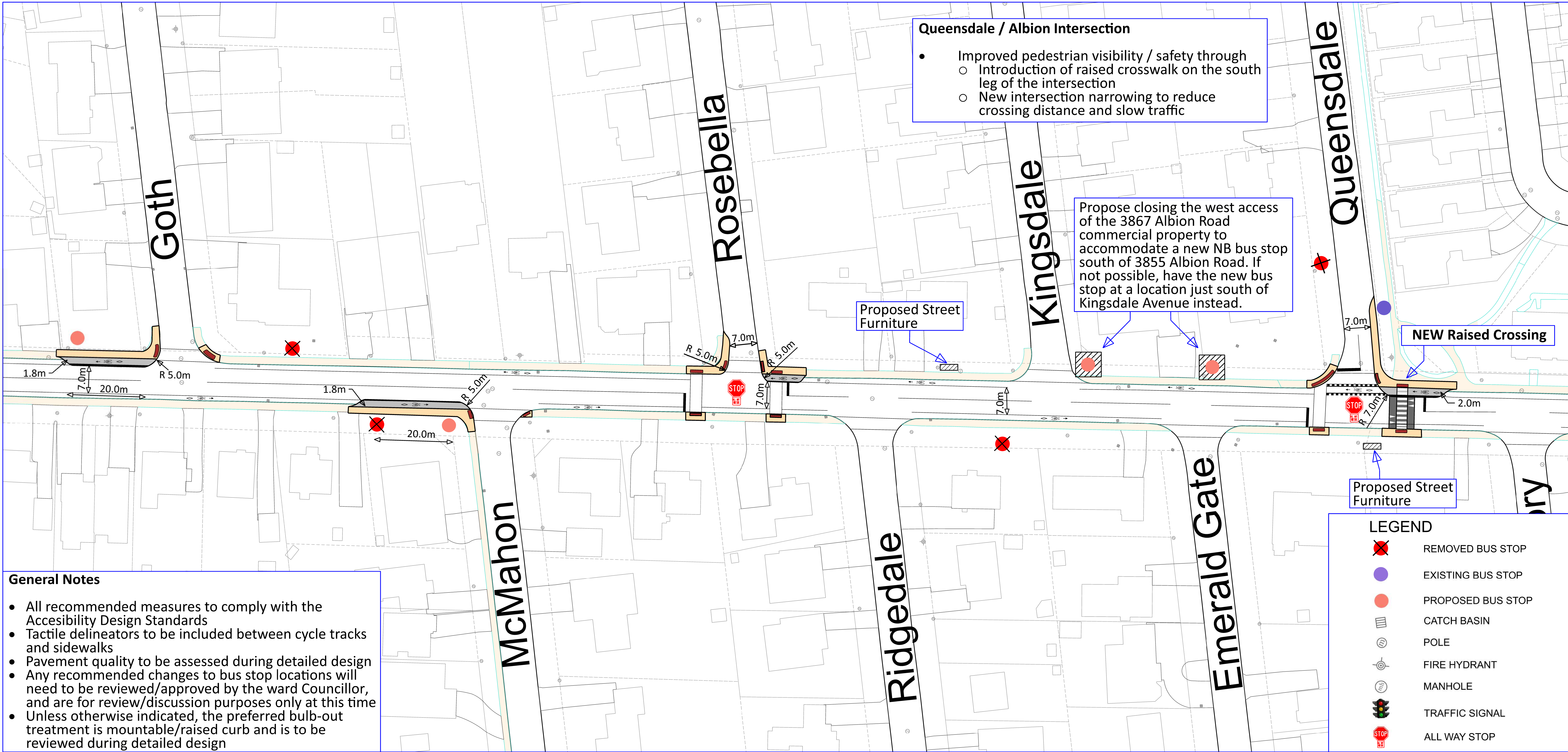
LEGEND

- REMOVED BUS STOP
- EXISTING BUS STOP
- PROPOSED BUS STOP
- CATCH BASIN
- POLE
- FIRE HYDRANT
- MANHOLE
- TRAFFIC SIGNAL
- ALL WAY STOP

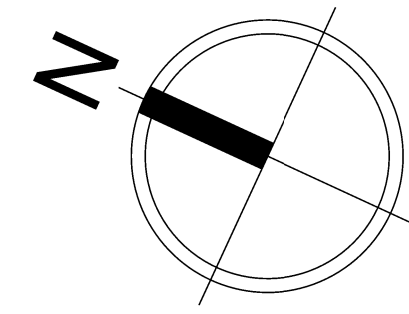
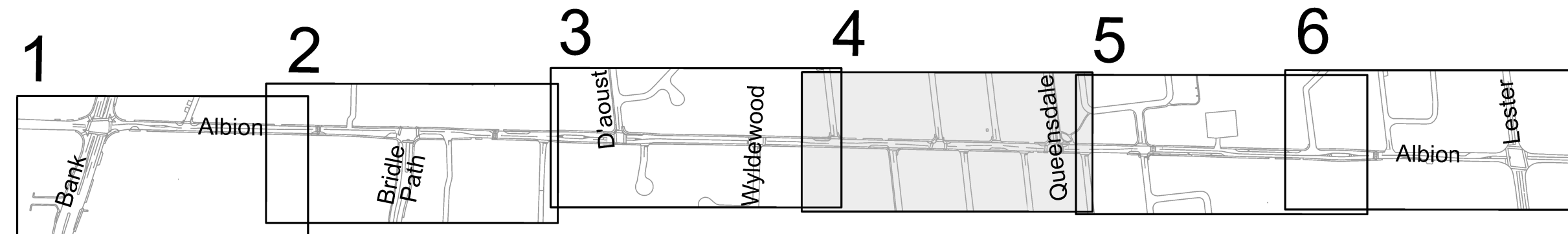


Albion Road
Traffic Study
Recommended Plan
Bank Street to Lester Road

Reviewed By: Justin Swan	
Completed By: Jason Endrawis	
Scale: NTS	Date: January 2021



Transportation Services
Transportation Planning



NTS

Albion Road Traffic Study Recommended Plan

Bank Street to Lester Road

Reviewed By:
Justin Swan

Completed By:
Jason Endrawis

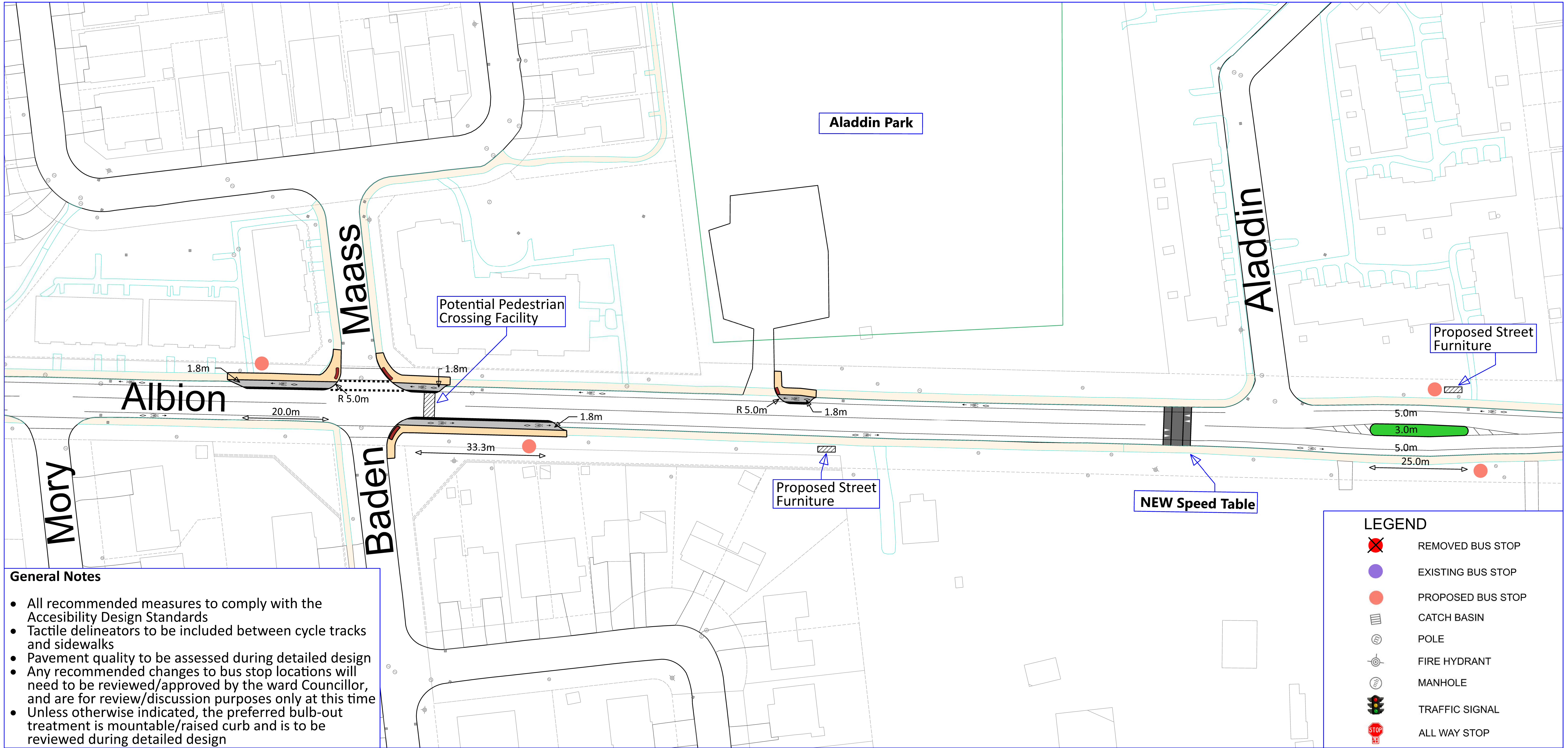
Scale:
NTS

Date:
January
2021

Drawing No.:

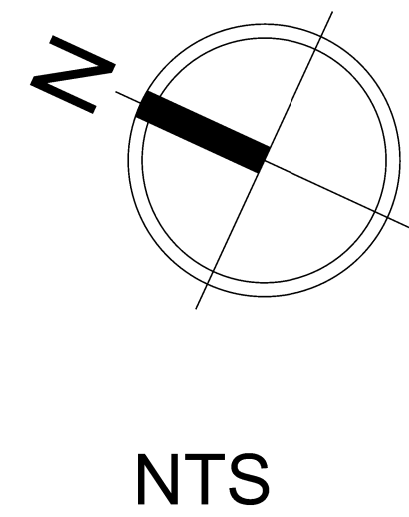
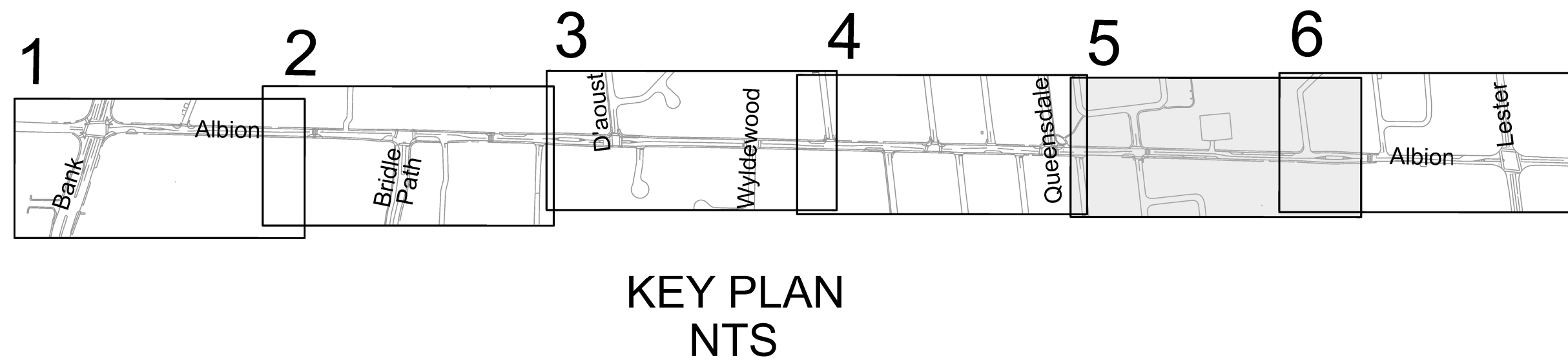
4

Sheet 4 of 6



General Notes

- All recommended measures to comply with the Accessibility Design Standards
- Tactile delineators to be included between cycle tracks and sidewalks
- Pavement quality to be assessed during detailed design
- Any recommended changes to bus stop locations will need to be reviewed/approved by the ward Councillor, and are for review/discussion purposes only at this time
- Unless otherwise indicated, the preferred bulb-out treatment is mountable/raised curb and is to be reviewed during detailed design



Albion Road
Traffic Study
Recommended Plan

Bank Street to Lester Road

Reviewed By: Justin Swan

Completed By: Jason Endrawis

Scale: NTS

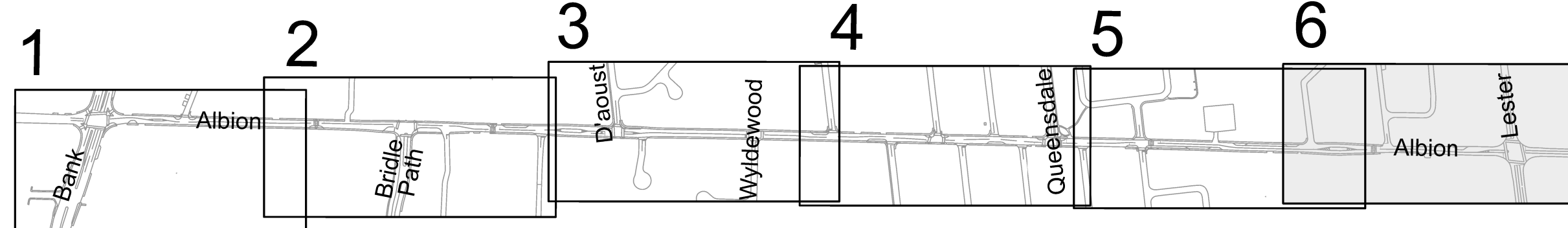
Date: January 2021

Drawing No.:

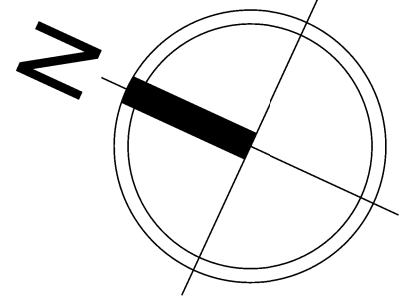
5



Transportation Services
Transportation Planning



KEY PLAN
NTS



NTS

Albion Road Traffic Study Recommended Plan

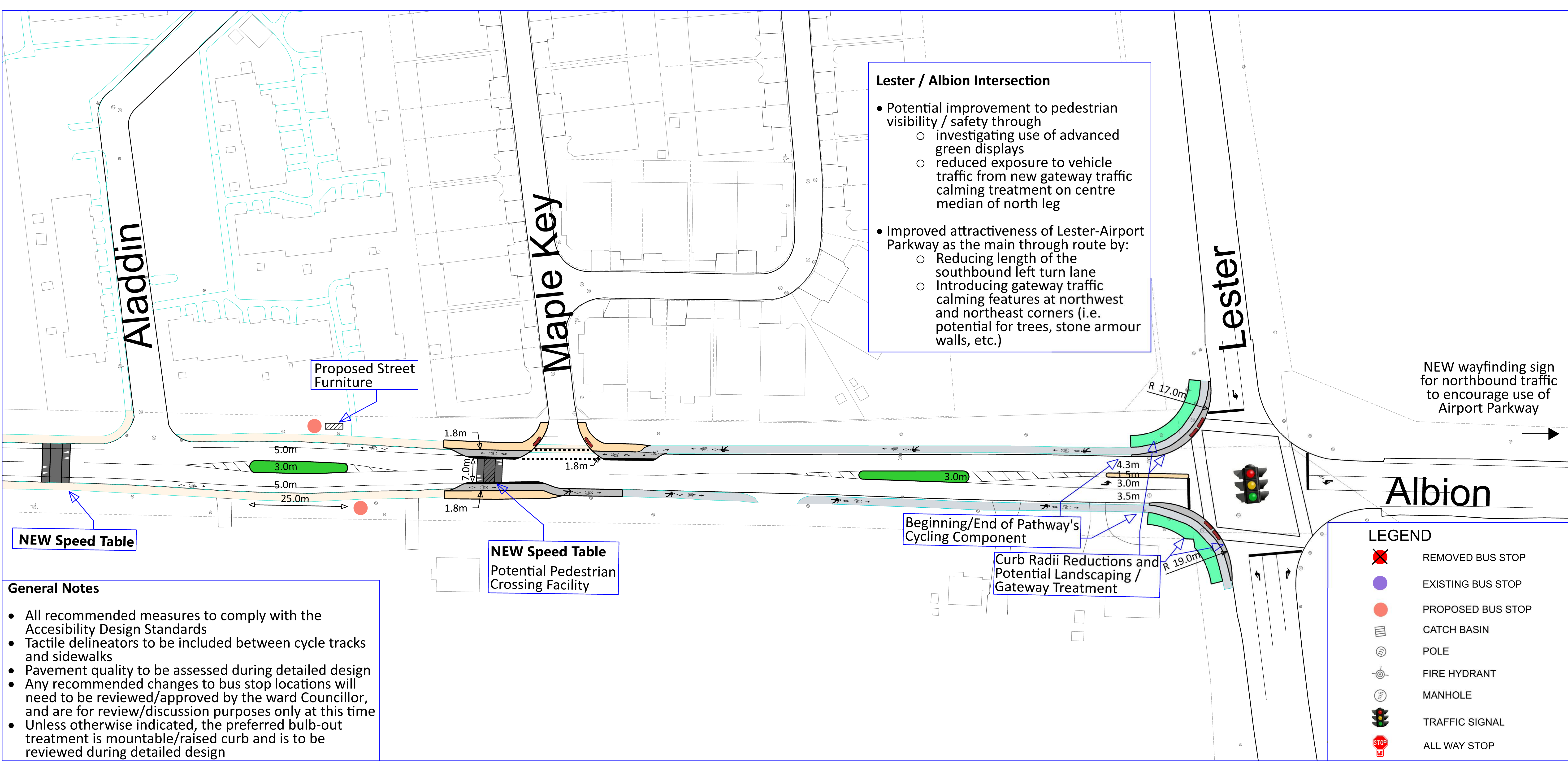
Bank Street to Lester Road

Reviewed By:		Justin Swan
Completed By:		Jason Endrawis
Scale:	Date:	
NTS	January 2021	

Drawing No.:

6

Sheet 6 of 6



Lester / Albion Intersection

- Potential improvement to pedestrian visibility / safety through
 - investigating use of advanced green displays
 - reduced exposure to vehicle traffic from new gateway traffic calming treatment on centre median of north leg
- Improved attractiveness of Lester-Airport Parkway as the main through route by:
 - Reducing length of the southbound left turn lane
 - Introducing gateway traffic calming features at northwest and northeast corners (i.e. potential for trees, stone armour walls, etc.)

NEW Speed Table

Proposed Street Furniture

NEW Speed Table
Potential Pedestrian Crossing Facility

Beginning/End of Pathway's Cycling Component

Curb Radii Reductions and Potential Landscaping / Gateway Treatment

LEGEND

- ✗ REMOVED BUS STOP
- EXISTING BUS STOP
- PROPOSED BUS STOP
- ▢ CATCH BASIN
- POLE
- FIRE HYDRANT
- MANHOLE
- 🚦 TRAFFIC SIGNAL
- 🛑 ALL WAY STOP