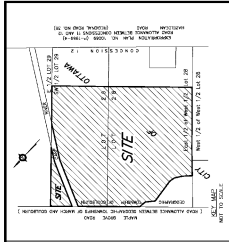
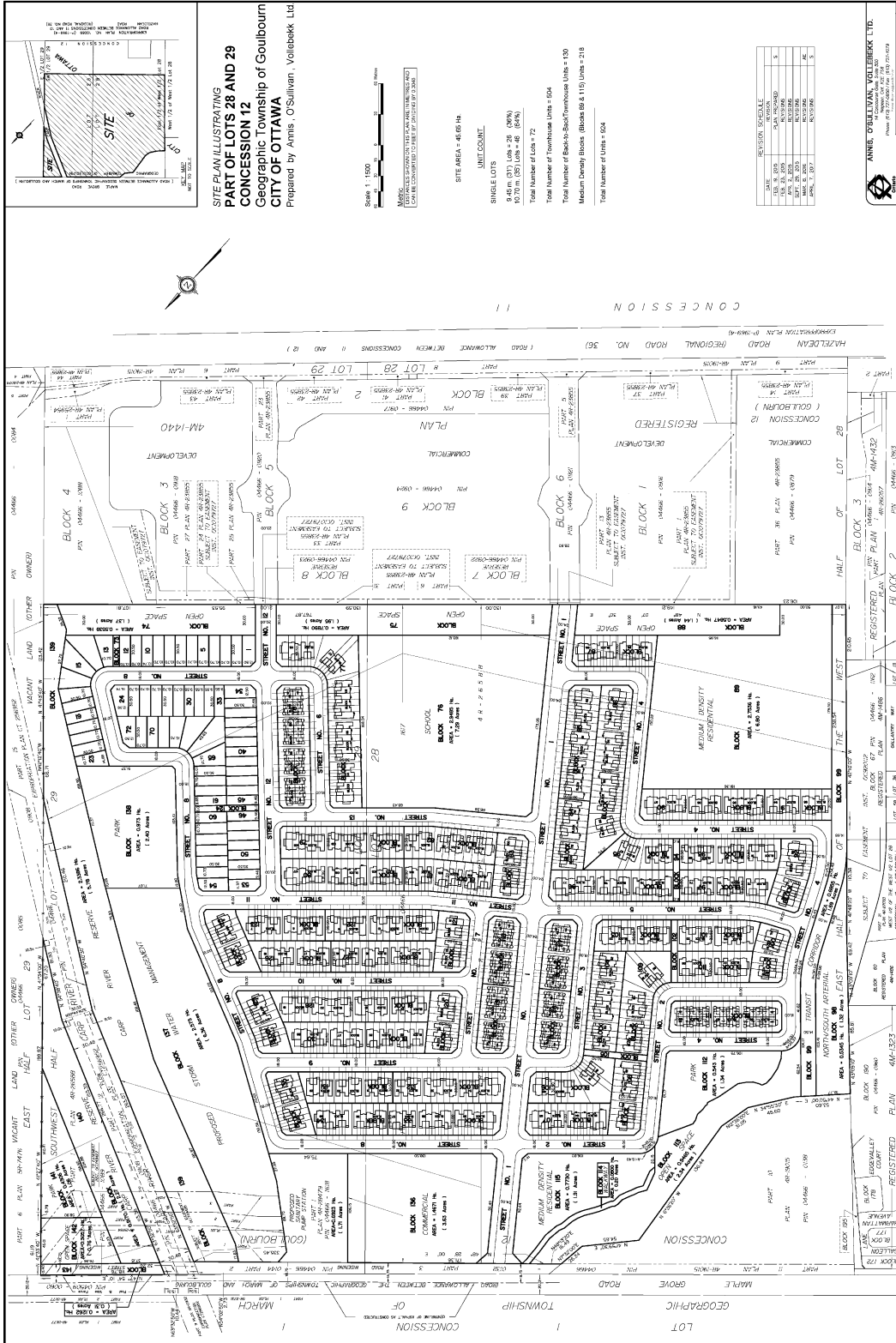


# Document 5 – Draft Plan of Subdivision



**SITE PLAN ILLUSTRATIONS**  
**PART OF LOTS 28 AND 29**  
**CONCESSION 12**  
**Geographic Township of Goulbourn**  
**CITY OF OTTAWA**  
 Prepared by Annis, O'Sullivan, Vollebek Ltd

Scale = 1:1500  
 METRIC DIMENSIONS TO BE USED UNLESS OTHERWISE SPECIFIED  
 CAN BE CONVERTED TO FEET BY DIVIDING BY 30.48

SITE AREA = 45.65 HA.  
 UNITS COMPOSED:  
 SINGLE LOTS  
 9.45 HA (21 LOTS - 28 (87%)  
 17.00 HA (42 LOTS - 42 (87%)  
 Total Number of Lots = 72  
 Total Number of Townhouse Units = 504  
 Total Number of Back-to-Back Townhouse Units = 130  
 Medium Density Blocks (Blocks 69 & 116) Units = 218  
 Total Number of Units = 1004

| NO. | SECTION | SCHEDULE |
|-----|---------|----------|
| 1   | 101     | 1        |
| 2   | 102     | 2        |
| 3   | 103     | 3        |
| 4   | 104     | 4        |
| 5   | 105     | 5        |
| 6   | 106     | 6        |
| 7   | 107     | 7        |
| 8   | 108     | 8        |
| 9   | 109     | 9        |
| 10  | 110     | 10       |
| 11  | 111     | 11       |
| 12  | 112     | 12       |
| 13  | 113     | 13       |
| 14  | 114     | 14       |
| 15  | 115     | 15       |
| 16  | 116     | 16       |
| 17  | 117     | 17       |
| 18  | 118     | 18       |
| 19  | 119     | 19       |
| 20  | 120     | 20       |
| 21  | 121     | 21       |
| 22  | 122     | 22       |
| 23  | 123     | 23       |
| 24  | 124     | 24       |
| 25  | 125     | 25       |
| 26  | 126     | 26       |
| 27  | 127     | 27       |
| 28  | 128     | 28       |
| 29  | 129     | 29       |
| 30  | 130     | 30       |
| 31  | 131     | 31       |
| 32  | 132     | 32       |
| 33  | 133     | 33       |
| 34  | 134     | 34       |
| 35  | 135     | 35       |
| 36  | 136     | 36       |
| 37  | 137     | 37       |
| 38  | 138     | 38       |
| 39  | 139     | 39       |
| 40  | 140     | 40       |
| 41  | 141     | 41       |
| 42  | 142     | 42       |
| 43  | 143     | 43       |
| 44  | 144     | 44       |
| 45  | 145     | 45       |
| 46  | 146     | 46       |
| 47  | 147     | 47       |
| 48  | 148     | 48       |
| 49  | 149     | 49       |
| 50  | 150     | 50       |
| 51  | 151     | 51       |
| 52  | 152     | 52       |
| 53  | 153     | 53       |
| 54  | 154     | 54       |
| 55  | 155     | 55       |
| 56  | 156     | 56       |
| 57  | 157     | 57       |
| 58  | 158     | 58       |
| 59  | 159     | 59       |
| 60  | 160     | 60       |
| 61  | 161     | 61       |
| 62  | 162     | 62       |
| 63  | 163     | 63       |
| 64  | 164     | 64       |
| 65  | 165     | 65       |
| 66  | 166     | 66       |
| 67  | 167     | 67       |
| 68  | 168     | 68       |
| 69  | 169     | 69       |
| 70  | 170     | 70       |
| 71  | 171     | 71       |
| 72  | 172     | 72       |

**ANNIS, O'SULLIVAN, VOLLEBEK LTD.**  
 1000 SHEPPARD AVENUE EAST, SUITE 100  
 SCARBOROUGH, ONTARIO M1S 1T7  
 TEL: (416) 291-1111  
 FAX: (416) 291-1112  
 WWW.AOSVL.COM