

PLAN 4R-
 RECEIVED AND DEPOSITED
 DATE: _____
 REPRESENTATIVE FOR
 LAND REGISTRAR FOR THE
 LAND TITLES DIVISION OF
 ONTARIO-CADASTRE No. 4

AREAS (Sq.m.)	PART	LOT	CONVEYANCE PLAN	PIN
644.0	2	6	3 (Ottawa Front)	04755-0203

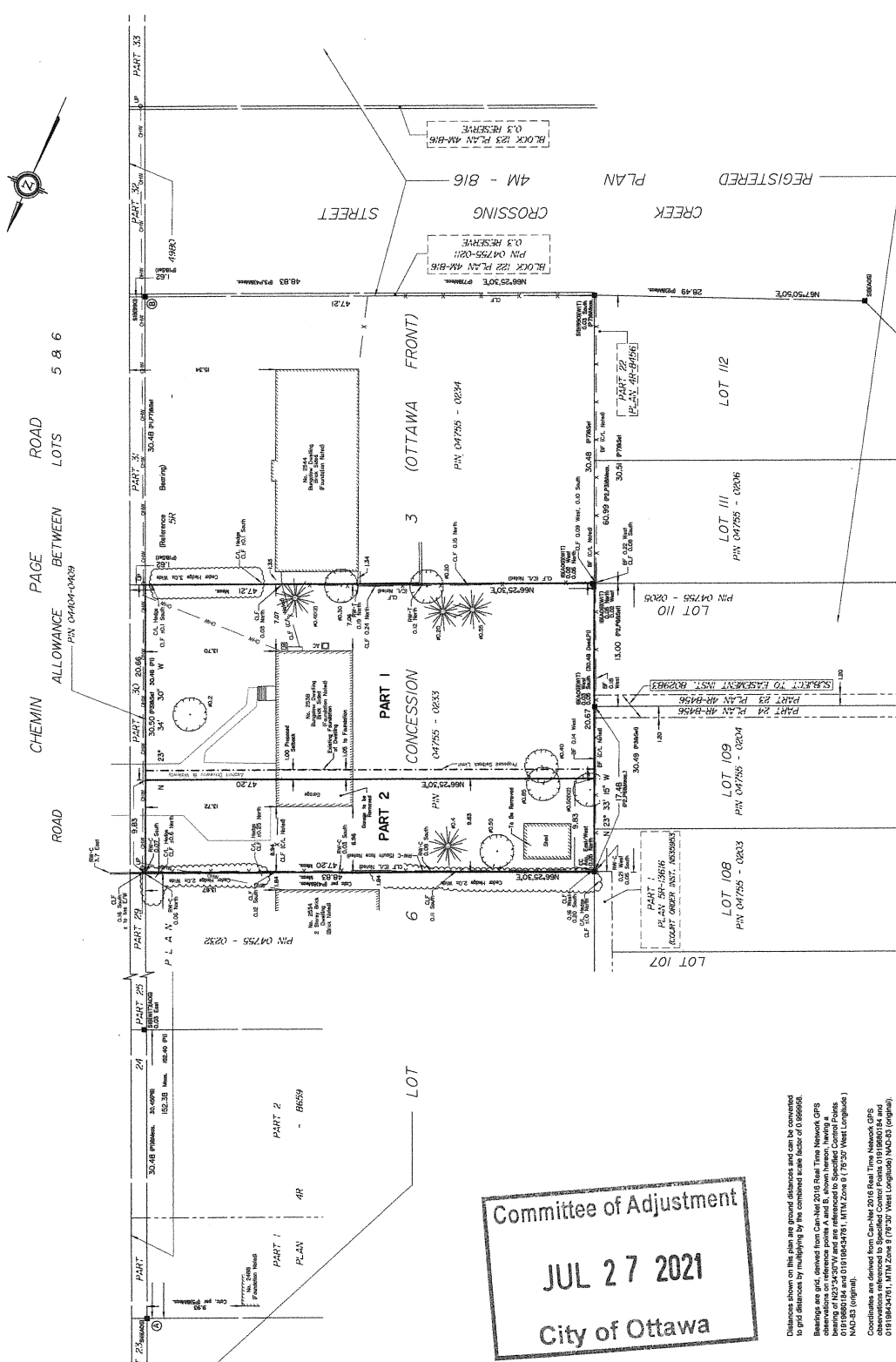
**DRAFT PLAN OF SURVEY OF
 PART OF LOT 6
 CONCESSION 3 OTTAWA FRONT
 GEOGRAPHIC TOWNSHIP OF GLOUCESTER
 CITY OF OTTAWA**
 Surveyed by Annis, O'Sullivan, Vollebakk Ltd.

Scale 1:250
 METRIC DISTANCES AND COORDINATES SHOWN ON THIS PLAN
 ARE IN METRES AND CAN BE CONVERTED TO FEET BY
 DIVIDING BY 0.3048.

Surveyor's Certificate
 I CERTIFY THAT:
 1. This survey and plan are correct and in accordance with the Surveys Act and its related Titles and the regulations made under them.
 2. The survey was completed on the _____ day of _____, 2021.

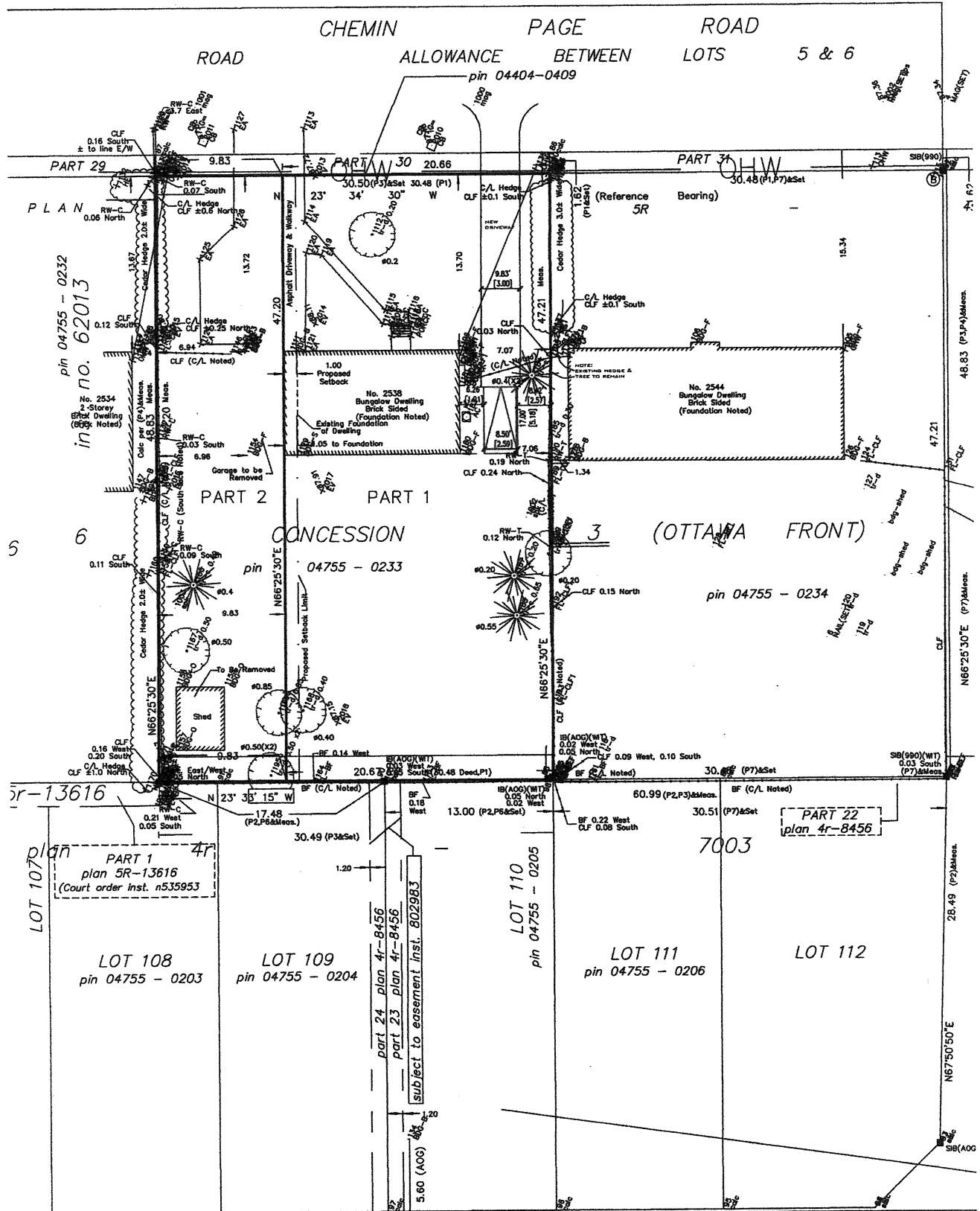
- Notes & Legend**
- SB Survey Monument Banded
 - SB Standard iron Bar
 - SB Standard iron Bar
 - SB Standard iron Bar
 - MNS Measured
 - MNS Measured
 - (P1) Registered Plan A48-818
 - (P2) Plan OR-13016
 - (P3) (ACS) Plan October 17, 1998
 - (P4) (ACS) Plan October 15, 1998
 - (P5) (ACS) Reference Plan 1998-116
 - (P6) Plan OR-8669
 - (P7) Overlaid Wires
 - (P8) O.C.F.
 - (P9) Chain Link Fence
 - (P10) Concrete Retaining Wall
 - (P11) Timber Retaining Wall
 - (P12) Board Fence
 - (P13) C/A
 - (P14) Deciduous Tree

ANNIS, O'SULLIVAN, VOLLEBAKK LTD.
 Chartered Professional Engineer
 14 Concession 3, Suite 303
 Phone: (613) 727-2607 / Fax: (613) 727-0779
 www.annisossullivanvollebakk.com



Committee of Adjustment
JUL 27 2021
 City of Ottawa

Distances shown on this plan are ground distances and can be converted to grid distances by multiplying by the combined scale factor of 0.999956. Bearings are grid, derived from Can-Mat 2016 Real Time Network GPS observations on reference points A and B. Known herein: having a precision of 0.01 metres (10 mm) and (1) NAD 83 (North American Datum of 1983) (original). Coordinates are derived from Can-Mat 2016 Real Time Network GPS observations referenced to Sporckel Control Points (D191696184 and D1918604701), ATN Zone 18 (UTM Zone 18 TQ 50 West Longitude) NAD 83 (original). Coordinate values are to urban accuracy in accordance with O. Reg. 216/10. -D191960184 Northing 5040010.15 Easting 384736.55 -D1918604701 Northing 5003792.12 Easting 374005.11 -POINT B Northing 5003643.84 Easting 381504.89 Caution: Coordinates cannot, in themselves, be used to re-establish corners or boundaries shown on this plan.



Committee of Adjustment
 JUL 27 2021
 City of Ottawa